

UNITED STATES
DEPARTMENT OF THE INTERIOR
BUREAU OF LAND MANAGEMENT

APPLICATION FOR PERMIT TO DRILL, DEEPEN, OR PLUG BACK

1a. TYPE OF WORK
DRILL ☒ DEEPEN ☐ PLUG BACK ☐
b. TYPE OF WELL
OIL WELL ☐ GAS WELL ☒ OTHER ☐ SINGLE ZONE ☐ MULTIPLE ZONE ☐

2. NAME OF OPERATOR
SUPERIOR OIL COMPANY

3. ADDRESS OF OPERATOR
P. O. DRAWER 'G', CORTEZ, COLORADO 81321

4. LOCATION OF WELL (Report location clearly and in accordance with any State requirements.)*
At surface
790' FNL, 1080' FEL, SEC. 13 (NENE)
At proposed prod. zone
Same as above

14. DISTANCE IN MILES AND DIRECTION FROM NEAREST TOWN OR POST OFFICE*
14 miles southeast of Blanco, New Mexico

15. DISTANCE FROM PROPOSED*
LOCATION TO NEAREST
PROPERTY OR LEASE LINE, FT.
(Also to nearest drlg. unit line, if any)
790'

16. NO. OF ACRES IN LEASE
640

17. NO. OF ACRES ASSIGNED
TO THIS WELL
160

18. DISTANCE FROM PROPOSED LOCATION*
TO NEAREST WELL, DRILLING, COMPLETED,
OR APPLIED FOR, ON THIS LEASE, FT.
3062'

19. PROPOSED DEPTH
6800'

20. ROTARY OR CABLE TOOLS
Rotary

21. ELEVATIONS (Show whether DF, RT, GR, etc.)
5980' ungraded ground level

22. APPROX. DATE WORK WILL START*
June 30, 1984

23. PROPOSED CASING AND CEMENTING PROGRAM

SIZE OF HOLE	SIZE OF CASING	WEIGHT PER FOOT	SETTING DEPTH
17-1/2"	13-3/8"	54.5#	40'
12-1/4"	8-5/8"	24#	300'
7-7/8"	5-1/2"	15.5#	6800'

5. LEASE DESIGNATION AND SERIAL NO.
1-149-IND-8466
6. IF INDIAN, ALLOTTEE OR TRIBE NAME
WILLIE RAMENTA, et al (Navajo)
7. UNIT AGREEMENT NAME
N/A
8. FARM OR LEASE NAME
RAMENTA, et al
9. WELL NO.
#1E
10. FIELD AND POOL, OR WILDCAT
BASIN DAKOTA FIELD
11. SEC., T., R., M., OR BLK.
AND SURVEY OR AREA
SEC. 13, T27N, R9W, NMPM
12. COUNTY OR PARISH
SAN JUAN
13. STATE
NM

This action is subject to administrative
appeal pursuant to 30 CFR 290,
QUANTITY OF CEMENT
Redimix to surface
250 sx Class 'B' to surface
1st stage: 1200 sx light above
Mesa Verde.
2nd stage: 700 sx of 50/50 pozmix
above Ojo Alamo through
DV tool set at top of
Chacra.

Superior Oil proposes to drill a well to 6800' to test the Dakota formation. If
productive, we will run casing and complete. If dry, we will plug and abandon as
per BLM, BIA, and State of New Mexico regulations.

RECEIVED

JUN 29 1984

BUREAU OF LAND MANAGEMENT

FARMINGTON RESOURCE AREA

IN ABOVE SPACE DESCRIBE PROPOSED PROGRAM: If proposal is to deepen or plug back, give data on present productive zone and proposed new productive
zone. If proposal is to drill or deepen directionally, give pertinent data on subsurface locations and measured and true vertical depths. Give blowout
prevention program, if any.

24. SIGNED Gregg A. Tripp TITLE Engineer

(This space for Federal or State office use)

PERMIT NO.

APPROVAL DATE

APPROVED BY

TITLE

CONDITIONS OF APPROVAL, IF ANY:

APPROVED DATE <u>AS 6-30-84</u> INTENDED
JUL 30 1984
(SGD.) MAT MILLENBACH AREA MANAGER FARMINGTON RESOURCE AREA

*See Instructions On Reverse Side

OIL CONSERVATION DIVISION

STATE OF NEW MEXICO
ENERGY AND MINERALS DEPARTMENTP. O. BOX 2088
SANTA FE, NEW MEXICO 87501Form C-102
Revised 10-1-78

All distances must be from the outer boundaries of the Section

Operator Superior Oil Company		Lease Ramenta, etal		Well No. 1E
Unit Letter A	Section 13	Township 27 North	Range 9 West	County San Juan
Actual Footage Location of Well: 790 feet from the North line and 1080 feet from the East line				
Ground Level Elev. 5980	Producing Formation		Pool	Dedicated Acreage: Acres

1. Outline the acreage dedicated to the subject well by colored pencil or hatchure marks on the plat below.
2. If more than one lease is dedicated to the well, outline each and identify the ownership thereof (both as to working interest and royalty).
3. If more than one lease of different ownership is dedicated to the well, have the interests of all owners been consolidated by communitization, unitization, force-pooling, etc?

☐ Yes ☐ No If answer is "yes," type of consolidation _____

If answer is "no," list the owners and tract descriptions which have actually been consolidated. (Use reverse side of this form if necessary.) _____

No allowable will be assigned to the well until all interests have been consolidated (by communitization, unitization, forced-pooling, or otherwise) or until a non-standard unit, eliminating such interests, has been approved by the Division.

790'		1080'	
SEC. 13		Plat No. 5	
RECEIVED JUN 29 1984 BUREAU OF LAND MANAGEMENT FARMINGTON RESOURCE AREA			

CERTIFICATION

I hereby certify that the information contained herein is true and complete to the best of my knowledge and belief.

Name

Position

Company

Date

I hereby certify that the location shown on this plat was plotted from field notes of actual survey made by me or under my supervision and that the same is true and correct to the best of my knowledge and belief.

Date Surveyed

May 12, 1984

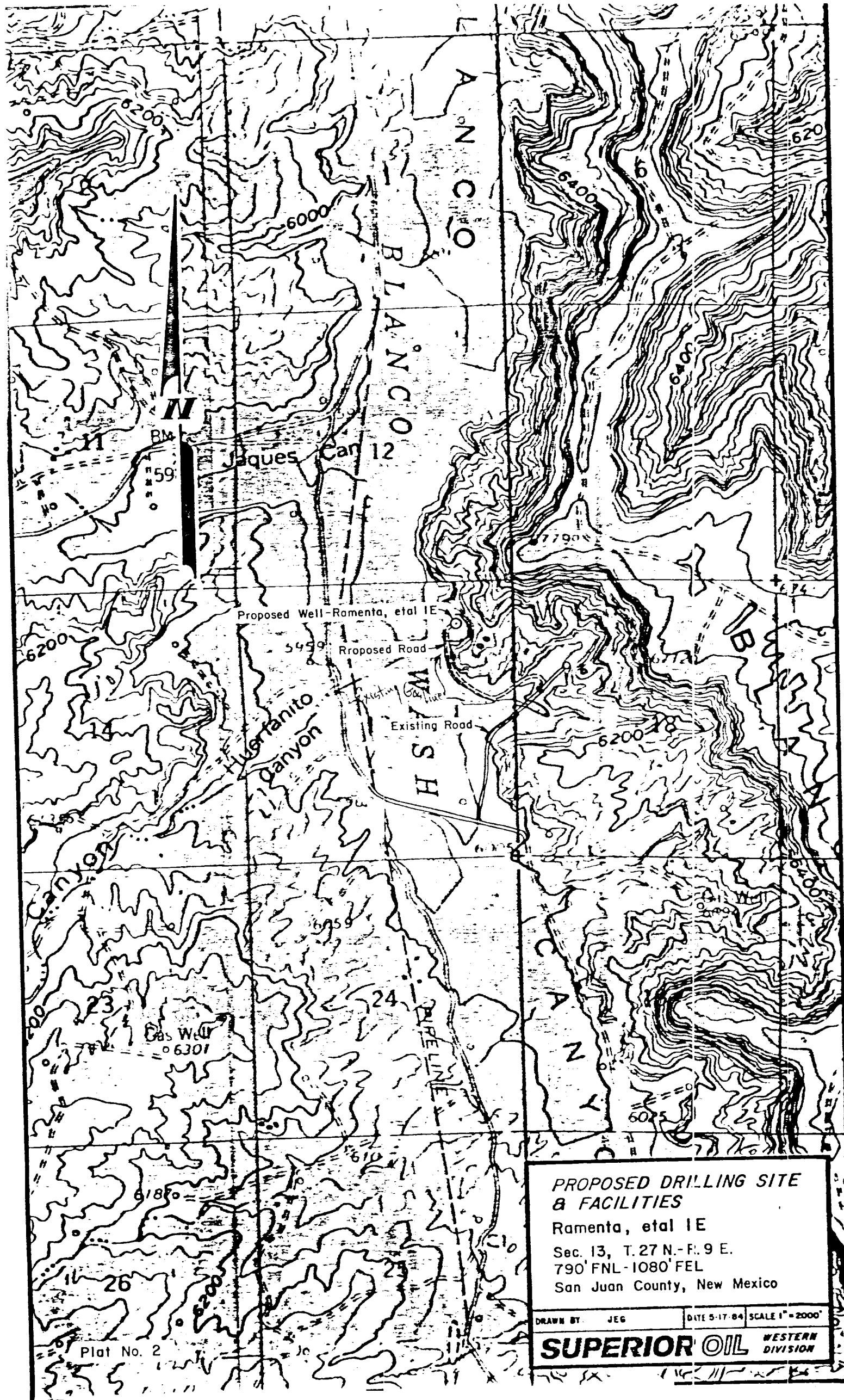
Registered Professional Engineer
and/or Land Surveyor

Edgar L. Risenhoover

Certificate No. 5979

Edgar L. Risenhoover, L.S.

0 330 660 990 1320 1650 1980 2310 2640 2970 3300 3630 3960 4290 4620 4950 5280 5610 5940 6270 6600



**PROPOSED DRILLING SITE
& FACILITIES**

Ramenta, etal 1E
Sec. 13, T. 27 N.-R. 9 E.
790' FNL-1080' FEL
San Juan County, New Mexico

DRAWN BY: JEG DATE 5-17-84 SCALE 1"=2000'
SUPERIOR OIL WESTERN
DIVISION

Plat No. 2