

UNITED STATES
DEPARTMENT OF THE INTERIOR
BUREAU OF LAND MANAGEMENT

APPLICATION FOR PERMIT TO DRILL, DEEPEN, OR PLUG BACK

1a. TYPE OF WORK

DRILL ☒

DEEPEN ☐

PLUG BACK ☐

b. TYPE OF WELL

OIL
WELL ☐

GAS
WELL ☒

OTHER

SINGLE
ZONE ☒

MULTIPLE
ZONE ☐

2. NAME OF OPERATOR

El Paso Natural Gas Company

3. ADDRESS OF OPERATOR

PO Box 4289, Farmington, NM 87499

4. LOCATION OF WELL (Report location clearly and in accordance with any State requirements.)*

At surface

1190'N, 790'W

At proposed prod. zone

14. DISTANCE IN MILES AND DIRECTION FROM NEAREST TOWN OR POST OFFICE*

9 miles south of Bloomfield, NM

15. DISTANCE FROM PROPOSED*

LOCATION TO NEAREST
PROPERTY OR LEASE LINE, FT.

790'

(Also to nearest drig. unit line, if any)
18. DISTANCE FROM PROPOSED LOCATION*
TO NEAREST WELL, DRILLING, COMPLETION
OR APPLIED FOR, ON THIS LEASE, FT.

700'

16. NO. OF ACRES IN LEASE

640.

19. PROPOSED DEPTH

6535'

17. NO. OF ACRES ASSIGNED
TO THIS WELL

W/ 320.00

20. ROTARY OR CABLE TOOLS

Rotary

21. ELEVATIONS (Show whether DELTA, OR OPERATIONS AUTHORIZED ARE
6189'GL SUBJECT TO COMPLIANCE WITH ATTACHED

23. "GENERAL REQUIREMENTS" PROPOSED CASING AND CEMENTING PROGRAM

SIZE OF HOLE	SIZE OF CASING	WEIGHT PER FOOT	SETTING DEPTH	QUANTITY OF CEMENT
12 1/4"	8 5/8"	24.0#	200'	165 cu.ft.circulated
7 7/8"	4 1/2"	10.5#&11.6#	6860'	1834 cu.ft.circulated

1st stage - 369 cu.ft. to cover Gallup
2nd stage - 834 cu.ft. to cover Mesa Verde
3rd stage - 640 cu.ft. to cover Ojo Alamo

Selectively perforate and sand water fracture the Dakota formation.

A 3000 psi WP and 6000 psi test double gate preventer equipped with
blind and pipe rams will be used for blow out prevention on this well.

This gas is dedicated.

The W/2 of Section 20 is dedicated to this well.

RECEIVED

MAR 07 1985

OIL CON. DIV

IN ABOVE SPACE DESCRIBE PROPOSED PROGRAM: If proposal is to deepen or plug back, give data on present productive zone and proposed new productive zone. If proposal is to drill or deepen directionally, give pertinent data on subsurface locations and measured and true vertical depths. Give blowout preventer program, if any.

24.

SIGNED

(This space for Federal or State office use)

Drilling Clerk

2-14-85

DATE

APPROVED
AS AMENDED

PERMIT NO.

APPROVAL DATE

APPROVED BY

TITLE

CONDITIONS OF APPROVAL, IF ANY:

DATE

FEB 26 1985

M. MILLENBACH
AREA MANAGER

*See Instructions On Reverse Side

OIL CONSERVATION DIVISION

P. O. BOX 2088

SANTA FE, NEW MEXICO 87501

Form C-107
Revised 10-1STATE OF NEW MEXICO
ENERGY AND MINERALS DEPARTMENT

All distances must be from the outer boundaries of the Section.

Operator EL PASO NATURAL GAS COMPANY			Lease ANGEL PEAK		Well No. 2E
Unit Letter D	Section 20	Township 27N	Range 11W	County San Juan	
Actual Footage Location of Well: 1190 feet from the North line and 790 feet from the West line					
Ground Level Elev: 6189	Producing Formation Dakota		Pool Basin	Dedicated Acreage: 320 Acres	

1. Outline the acreage dedicated to the subject well by colored pencil or hachure marks on the plat below.
2. If more than one lease is dedicated to the well, outline each and identify the ownership thereof (both as to working interest and royalty).
3. If more than one lease of different ownership is dedicated to the well, have the interests of all owners been consolidated by communitization, unitization, force-pooling, etc?

☐ Yes ☐ No If answer is "yes," type of consolidation _____

If answer is "no," list the owners and tract descriptions which have actually been consolidated. (Use reverse side of this form if necessary.) _____

No allowable will be assigned to the well until all interests have been consolidated (by communitization, unitization, forced-pooling, or otherwise) or until a non-standard unit, eliminating such interests, has been approved by the Commission.

CERTIFICATION

I hereby certify that the information contained herein is true and complete to the best of my knowledge and belief.

Name

Drilling Clerk

Position

El Paso Natural Gas Co

Company

February 14, 1985

Date

I hereby certify that the well location shown on this plat was plotted from field notes of actual surveys made by me or under my supervision, and that the same is true and correct to the best of my knowledge and belief.

Date Surveyed

February 14, 1985

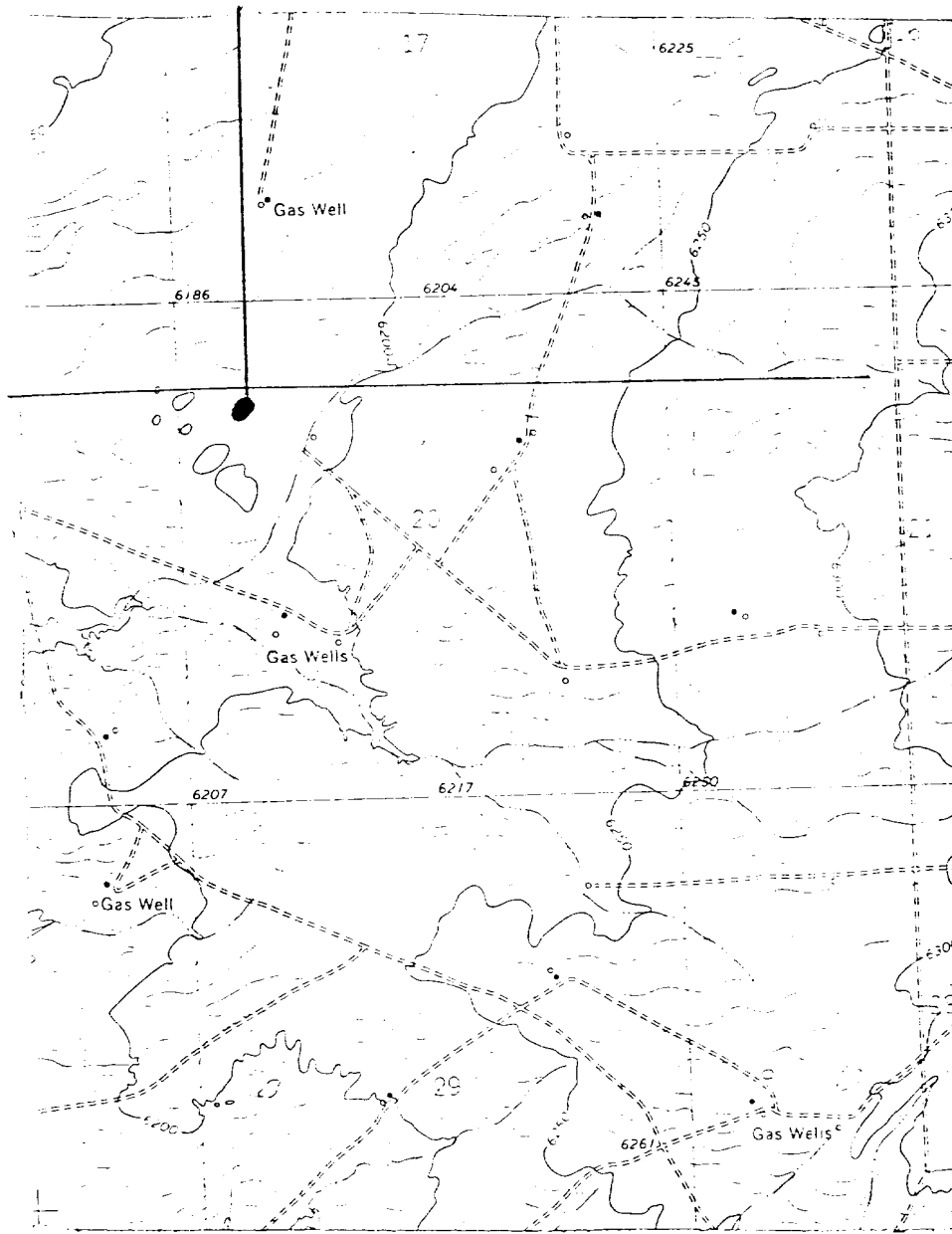
Registered Professional Engineer

and Land Surveyor

Fred B. Kerr, Jr.

Certification No.

El Paso Natural Gas Company
 Angel Peak #2E (Dk)
 NW 20-27-11



LEGEND OF RIGHT-OF-WAYS

- EXISTING ROADS —————
- EXISTING PIPELINES + + +
- EXISTING ROAD & PIPELINE + + +
- PROPOSED ROADS —————
- PROPOSED PIPELINES — + — + — + —
- PROPOSED ROAD & PIPELINE — + — + — + —