

UNITED STATES
DEPARTMENT OF THE INTERIOR
BUREAU OF LAND MANAGEMENT

APPLICATION FOR PERMIT TO DRILL, DEEPEN, OR PLUG BACK

1a. TYPE OF WORK

DRILL ☒

DEEPEN ☐

PLUG BACK ☐

b. TYPE OF WELL

OIL
WELL ☐

GAS
WELL ☒

OTHER

SINGLE
ZONE ☒

MULTIPLE
ZONE ☐

2. NAME OF OPERATOR

El Paso Natural Gas Company

3. ADDRESS OF OPERATOR

PO Box 4289, Farmington, NM 87499

4. LOCATION OF WELL (Report location clearly and in accordance with any State requirements.)*

At surface

790'N, 870'E

At proposed prod. zone

14. DISTANCE IN MILES AND DIRECTION FROM NEAREST TOWN OR POST OFFICE*

13 miles southeast of Bloomfield, NM

15. DISTANCE FROM PROPOSED*

LOCATION TO NEAREST
PROPERTY OR LEASE LINE, FT.
(Also to nearest drlg. unit line, if any)

790'

18. DISTANCE FROM PROPOSED LOCATION*

TO NEAREST WELL, DRILLING, COMPLETED,
OR APPLIED FOR, ON THIS LEASE, FT.

2500'

16. NO. OF ACRES IN LEASE

Unit

19. PROPOSED DEPTH

6575'

17. NO. OF ACRES ASSIGNED
TO THIS WELL

320.00

20. ROTARY OR CABLE TOOLS

Rotary

21. ELEVATIONS (Show whether DF, RT, GR, etc.)

6164' GL

22. APPROX. DATE WORK WILL START*

23. PROPOSED CASING AND CEMENTING PROGRAM

SIZE OF HOLE	SIZE OF CASING	WEIGHT PER FOOT	SETTING DEPTH	QUANTITY OF CEMENT
12 1/4"	8 5/8"	24.0#	200'	165 cu.ft. circulated
7 7/8"	4 1/2"	10.5# & 11.6#	6575'	1482 cu.ft. circulated

1st stage - 380 cu.ft. to cover Gallup
2nd stage - 551 cu.ft. to cover Mesa Verde
3rd stage - 551 cu.ft. to cover Ojo Alamo

Selectively perforate and sand water fracture the Dakota formation.

A 3000 psi WP and 6000 psi test double gate preventer equipped with
blind and pipe rams will be used for blow out prevention on this well.

This gas is dedicated.

The E/2 of Section 33 is dedicated to this well.

IN ABOVE SPACE DESCRIBE PROPOSED PROGRAM: If proposal is to deepen or plug back, give data on present productive zone and proposed new productive zone. If proposal is to drill or deepen directionally, give pertinent data on subsurface locations and measured and true vertical depths. Give blowout preventer program if any.

24.

SIGNED

Reggie Cook

TITLE

Drilling Clerk

DATE

2-28-85

(This space for Federal or State office use)

PERMIT NO.

APPROVAL DATE

APPROVED BY

TITLE

CONDITIONS OF APPROVAL, IF ANY:

NMOCC

APPROVED
AS AMENDED

MAY 03 1985

/s/ J. Stan McKee

M. MILLENBACH
AREA MANAGER

*See Instructions On Reverse Side

OIL CONSERVATION DIVISION

P. O. BOX 2088

STATE OF NEW MEXICO
ENERGY AND MINERALS DEPARTMENT

SANTA FE, NEW MEXICO 87501

Form C-107
Revised 10-1

All distances must be from the outer boundaries of the Section.

Operator EL PASO NATURAL GAS COMPANY			Lease HUERFANO UNIT (SF 077950)		Well No. 106E
Unit Letter A	Section 33	Township 27N	Range 10W	County San Juan	
Actual Footage Location of Well: 790 feet from the North line and 870 feet from the East line					
Ground Level Elev: 6164	Producing Formation Dakota		Pool Basin	Dedicated Acreage: 320 Acres	

1. Outline the acreage dedicated to the subject well by colored pencil or hachure marks on the plat below.
2. If more than one lease is dedicated to the well, outline each and identify the ownership thereof (both as to working interest and royalty).
3. If more than one lease of different ownership is dedicated to the well, have the interests of all owners been consolidated by communitization, unitization, force-pooling, etc?

☒ Yes ☐ No If answer is "yes," type of consolidation Unitization

If answer is "no," list the owners and tract descriptions which have actually been consolidated. (Use reverse side of this form if necessary.) _____

No allowable will be assigned to the well until all interests have been consolidated (by communitization, unitization, forced-pooling, or otherwise) or until a non-standard unit, eliminating such interests, has been approved by the Commission.

RECEIVED MAR 01 1985 BUREAU OF LAND MANAGEMENT SANTA FE, N.M.		790' 870'	
33			

CERTIFICATION

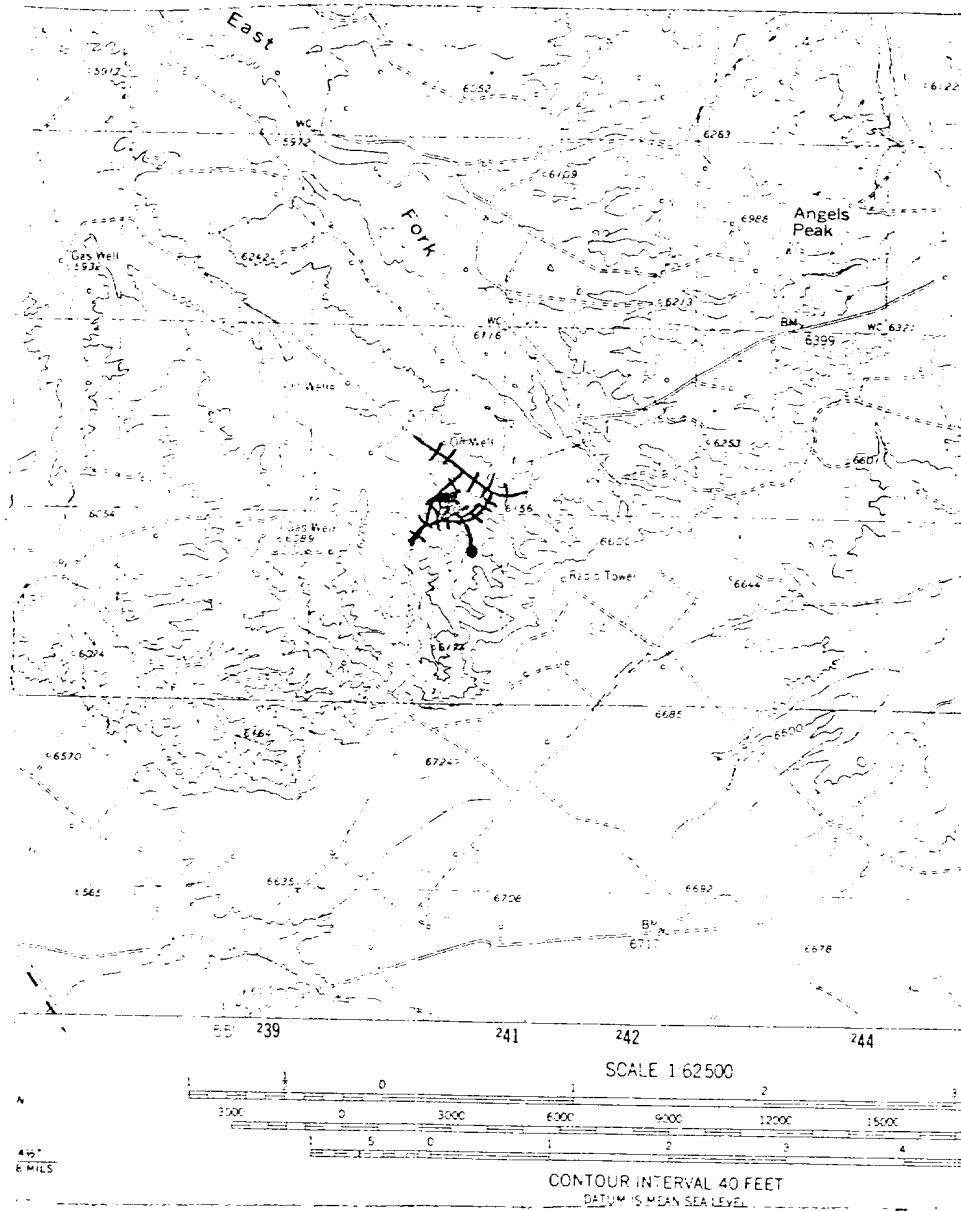
I hereby certify that the information contained herein is true and complete to the best of my knowledge and belief.

Reggie Doak
Name
Drilling Clerk
Position
El Paso Natural Gas Co
Company
February 28, 1985
Date

I hereby certify that the well location shown on this plat was plotted from field notes of actual surveys made by me or under my supervision, and that the same is true and correct to the best of my knowledge and belief.

Date Surveyed
February 28, 1985
Registered Professional Engineer
and Land Surveyor
Fred B. Skert
Certificate No. *106E*

Huerfano Unit #106E (Dk)
NENE 33-27-10, San Juan Co



Map #1

LEGEND OF RIGHT-OF-WAYS

EXISTING ROADS

EXISTING PIPELINES

EXISTING ROAD & PIPELINE

PROPOSED ROADS

PROPOSED PIPELINES

PROPOSED ROAD & PIPELINE

