

UNITED STATES
DEPARTMENT OF THE INTERIOR
GEOLOGICAL SURVEY

APPLICATION FOR PERMIT TO DRILL, DEEPEN, OR PLUG BACK

1a. TYPE OF WORK
DRILL ☒ DEEPEN ☐ PLUG BACK ☐

b. TYPE OF WELL

OIL
WELL ☐GAS
WELL ☒OTHER ☐

2. NAME OF OPERATOR

S. E. R. H., Inc.

3. ADDRESS OF OPERATOR

P. O. Box 312, Otis, Kansas 67565

4. LOCATION OF WELL (Report location clearly and in accordance with any State requirements*)
At surface 790' fNL; 990' FWL, NW/4 NW/4 Sec. 32 Unit D

At proposed prod. zone Same

14. DISTANCE IN MILES AND DIRECTION FROM NEAREST TOWN OR POST OFFICE*

15 miles Southwest of Shiprock, N. M.

15. DISTANCE FROM PROPOSED*

LOCATION TO NEAREST
PROPERTY OR LEASE LINE, FT.
(Also to nearest drg. unit line, if any)

790

16. NO. OF ACRES IN LEASE

1271

18. DISTANCE FROM PROPOSED LOCATION*
TO NEAREST WELL, DRILLING, COMPLETED,
OR APPLIED FOR, ON THIS LEASE, FT.

2640

19. PROPOSED DEPTH

6100'

7. NO. OF ACRES ASSIGNED
TO THIS WELL

160/160

20. ROTARY OR CABLE TOOLS

Rotary

21. ELEVATIONS (Show whether DF, RT, GR, etc.)

5856' Ungraded Ground.

DRILLING OPERATIONS AUTHORIZED ARE
SUBJECT TO COMPLIANCE WITH ATTACHED
"GENERAL REQUIREMENTS".

22. APPROX. DATE WORK WILL START*

On approval

This action is subject to technical and
procedural review pursuant to 43 CFR 3165.3
and appeal pursuant to 43 CFR 3165.4.

SIZE OF HOLE	SIZE OF CASING	WEIGHT PER FOOT	SETTING DEPTH
17 1/4"	13-3/8"	48 New	76'
12 1/4"	8-5/8"	24 J New	1480'
7-7/8"	5-1/2"	15.5# J New	6100' w/stage collar

100 sx. 2% CaCl₂ to surface
050 cft. 2% CaCl₂ to surface
1st. Stage 150 cft. or more*
2nd. Stage 225 cft. or more

* Volume to be calculated from caliper log and 20% excess used.

Propose to set 13-3/8" conductor w/spud mud and cement back to surface. WOC 12 hours. Drill 12 1/4" hole w/native mud and set 8-5/8" surface casing through Navajo and cement back to surface. WOC 15 hrs. Install BOP's and bleed-off manifold. Press. test to 800 psi. for 30 min. Drill out with low solids fresh water base mud to TD. Drill stem test Barker Creek zone if shows warrant. Run IES & GR/DN logs. Run and cement 5-1/2" casing. Two stages w/stage collar below Organ Rock.

To perforate and stimulate Mississippian interval; test; set plug and perforate, stimulate and test Organ Rock. Run packer on 1 1/2" EUE tubing and set for lower zone. Run 1 1/2" IJ tubing for upper zone. Install dual well head and kick off zones. See attached schematics for dual completion. NTL-6 Compliance section.

18. ABOVE SPACE DESCRIBE PROPOSED PROGRAM: If proposal is to deepen or plug back, give data on present productive zone and proposed new productive zone. If proposal is to drill or deepen directionally, give pertinent data on subsurface locations and measured and true vertical depths. Give blowout preventer program, if any.

24.

SIGNED John M. Heller

Consultant

DATE May 22, 1985

(This space for Federal or State office use)

PERMIT NO.

APPROVAL DATE

APPROVED BY

CONDITIONS OF APPROVAL, IF ANY:

JUL 26 1985
OIL CON. DIV. I
DIST. 3

*See Instructions On Reverse Side

NMOCC

DATE

JUL 26 1985
for J. Stan McKee
AREA MANAGER

NEW MEXICO OIL CONSERVATION COMMISSION
WELL LOCATION AND ACREAGE DEDICATION PLAT

Form C-102
Supersedes C-128
Effective 1-1-65

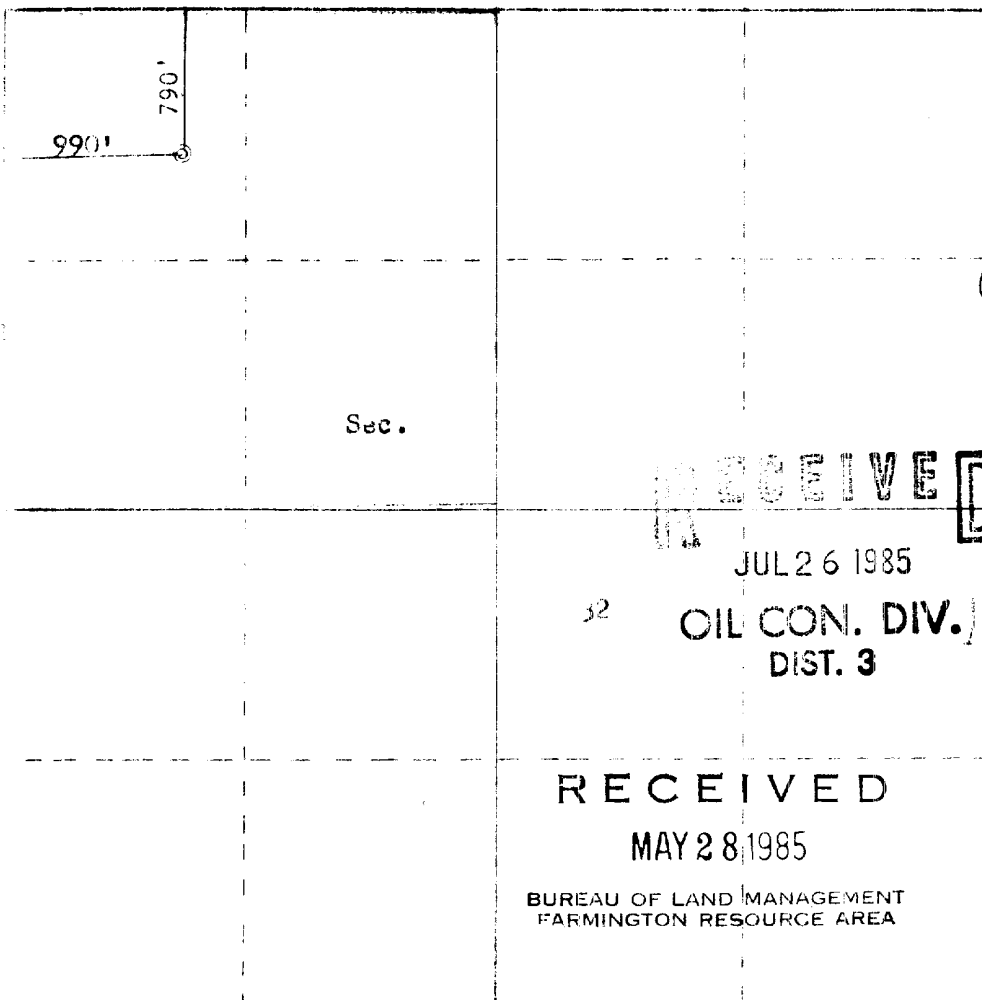
All distances must be from the outer boundaries of the Section.

Operator S. E. P. H. INCORPORATED			Lease NAVAJO 32		Well No. 332 3
Unit Letter D	Section 32	Township 27N	Range 19W	County San Juan	
Actual Footage Location of Well:					
790 feet from the North line and		990 feet from the West line			
Ground Level Elev: 5856	Producing Formation Mississippian & Organ Rock	Pool Under Organ Rock	Dedicated Acreage: 160 - 160		Acres

- Outline the acreage dedicated to the subject well by colored pencil or hachure marks on the plat below.
Outlined by _____
 - If more than one lease is dedicated to the well, outline each and identify the ownership thereof (both as to working interest and royalty).
Not applicable
 - If more than one lease of different ownership is dedicated to the well, have the interests of all owners been consolidated by communitization, unitization, force-pooling, etc?
Not applicable
- ☐ Yes ☐ No If answer is "yes," type of consolidation _____

If answer is "no," list the owners and tract descriptions which have actually been consolidated. (Use reverse side of this form if necessary.) _____

No allowable will be assigned to the well until all interests have been consolidated (by communitization, unitization, forced-pooling, or otherwise) or until a non-standard unit, eliminating such interests, has been approved by the Commission.



Scale: 1"=1000'

CERTIFICATION

I hereby certify that the information contained herein is true and complete to the best of my knowledge and belief.

John M. Heller
Name

John Heller
Position

Consultant

Company

SERH, Inc.

Date

May 22, 1985

I hereby certify that the well location shown on this plat was plotted from field notes of actual surveys made by me or under my supervision, and that the same is true and correct to the best of my knowledge and belief.

Date Surveyed

May 19, 1985 (re-issued)

Registered Professional Engineer and Land Surveyor

Fred B. Kerr Jr.
Fred B. Kerr Jr.

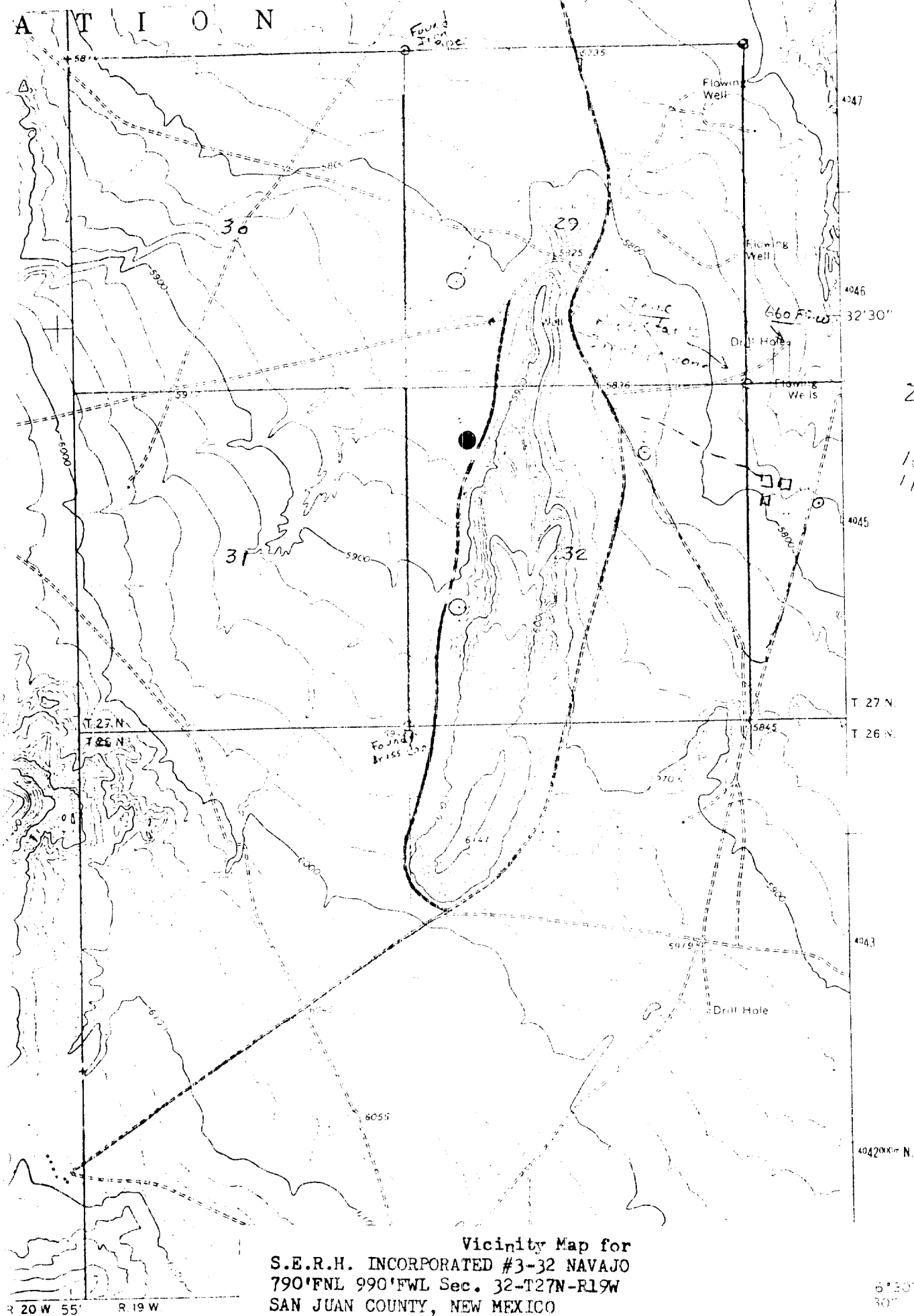
Certificate No. 4382

3950

SERH, Inc. Exhibit No. 1

Vicinity Map of Proposed Wellsites
for Navajo #3-32 and #4-32
Sec. 32-27N-19W, San Juan Co., N. M.
Mitten Rock Quadrangle - New Mexico

Existing Improved roads ———
Roads to improve ———



ROAD CLASSIFICATION