



TONEY ANAYA  
GOVERNOR

STATE OF NEW MEXICO  
ENERGY AND MINERALS DEPARTMENT  
OIL CONSERVATION DIVISION

December 17, 1985



1935 - 1985

POST OFFICE BOX 2088  
STATE LAND OFFICE BUILDING  
SANTA FE, NEW MEXICO 87501  
(505) 827-5800

Dugan Production Corp.  
P. O. Box 208  
Farmington, New Mexico 87499-0208

Attention: Sherman E. Dugan

Administrative Order NSL-2205

Gentlemen:

Reference is made to your application for a non-standard location for your KR No. 15 well to be located 2310 feet from the South line and 330 feet from the East line of Section 20, Township 27 North, Range 13 West, NMPM, Gallegos-Gallup Pool, San Juan County, New Mexico. The E/2 SE/4 of said Section 20 shall be dedicated to the well.

By authority granted me under the provisions of Rule 104 F(I), the above-described unorthodox location is hereby approved.

Sincerely,

R. L. STAMETS, DIRECTOR

RLS/DC/dr

cc: Oil Conservation Division - Aztec  
Bureau of Land Management - Farmington

RECEIVED  
DEC 20 1985  
OIL CON. DIV.  
DIST. 3



ENERGY AND MINERALS DEPARTMENT

OIL CONSERVATION DIVISION

AZTEC DISTRICT OFFICE

1000 RIO BRAZOS ROAD  
AZTEC, NEW MEXICO 87410  
(505) 334-6178

OIL CONSERVATION DIVISION  
BOX 2088  
SANTA FE, NEW MEXICO 87501

DATE 12-6-85

RE: Proposed MC \_\_\_\_\_  
Proposed DHC \_\_\_\_\_  
Proposed NSL X \_\_\_\_\_  
Proposed SWD \_\_\_\_\_  
Proposed WFX \_\_\_\_\_  
Proposed PMX \_\_\_\_\_

Gentlemen:

I have examined the application dated 11-25-85

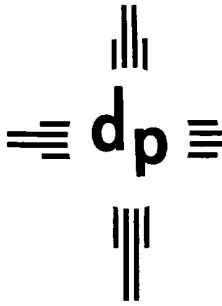
for the Dugan Prod. Corp. KR #15 I-20-27N-13W  
Operator Lease and Well No. Unit, S-T-R

and my recommendations are as follows:

CPR  
\_\_\_\_\_  
\_\_\_\_\_  
\_\_\_\_\_  
\_\_\_\_\_

Yours truly,

E. Burch



# dugan production corp.

November 21, 1985

**RECEIVED**  
NOV 25 1985  
OIL CON. DIV.  
DIST. 3

Frank Chavez  
New Mexico Oil Conservation Division  
1000 Rio Brazos Rd.  
Aztec, NM 87410

RE: Application for Administrative Approval of Unorthodox Location for  
Dugan Production Corporation's KR #15  
2310' FSL - 330' FEL, Sec. 20, T27N, R13W, NMPM  
San Juan County, NM - Gallup Test

Dear Mr. Chavez:

We hereby request approval of an unorthodox location for the subject well.  
Copies of the well location plat, topographic map and a production map  
showing offsetting operators are attached for your reference.

The unorthodox location is necessary due to proposed pivot arm radius prohibits  
placement of pump jack on an orthodox location. Dugan Production has intentionally  
placed the well at this location to avoid planned cultivated fields.

A copy of this application is being submitted to all offsetting operators by  
certified mail with a request that they furnish your office with a waiver of  
objection.

We request your approval of this location under the provisions of NMOCD Rule 104-F.

Sincerely,

Sherman E. Dugan  
Agent

SED/cg

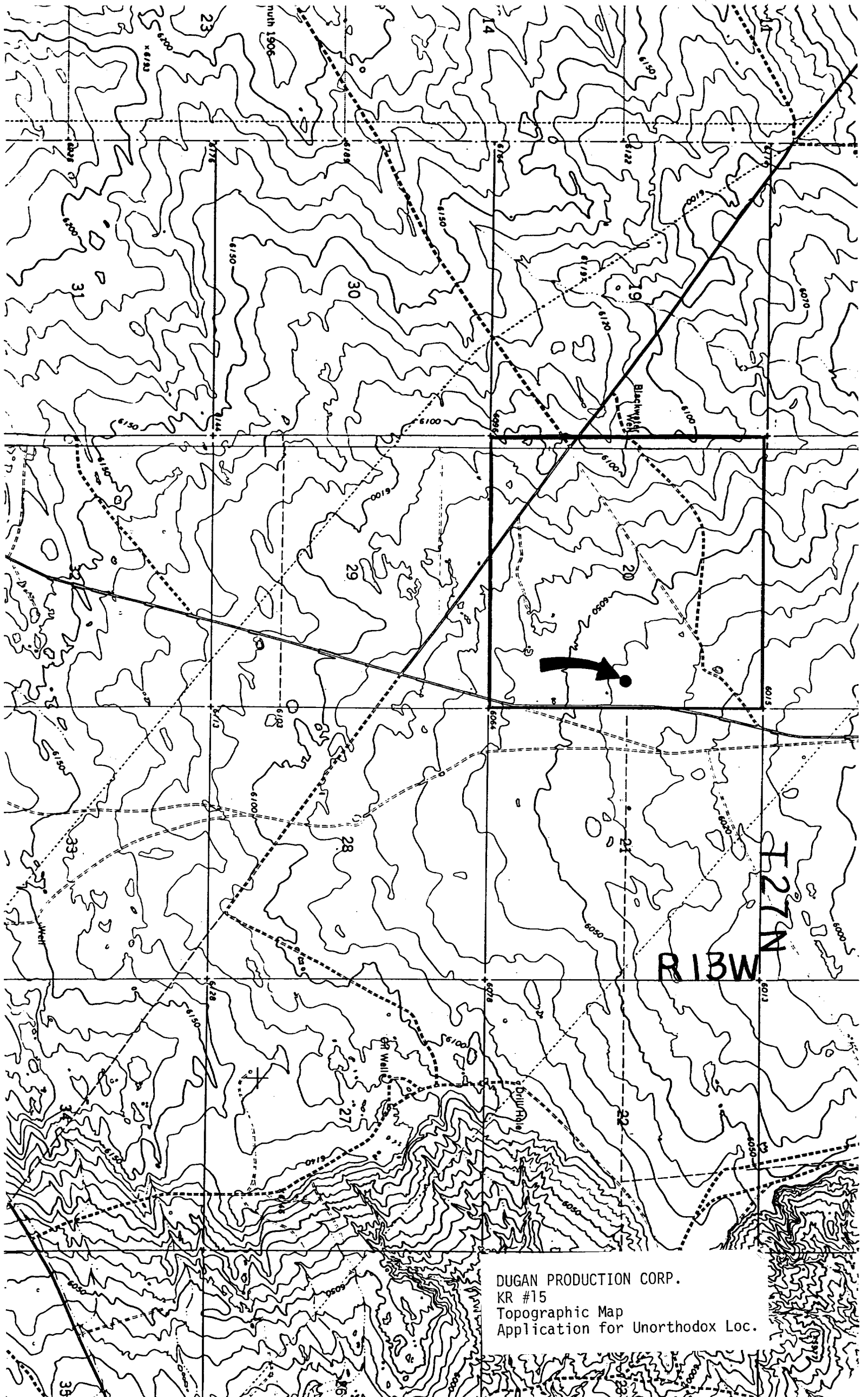
cc: Bureau of Land Management - Farmington  
Merrion Oil & Gas Corp.

-----  
-----  
WAIVER

Merrion Oil & Gas Corp. hereby waives objection to the above application for  
unorthodox location.

\_\_\_\_\_  
Date

\_\_\_\_\_  
By:



DUGAN PRODUCTION CORP.  
KR #15  
Topographic Map  
Application for Unorthodox Loc.

Kirby Pet.

KR Lease  
NM 11580  
Dugan Production Corp.

20



Merrion Oil & Gas Corp.

21

KR Lease  
NM 11580  
Dugan Production Corp.

29

La Lee Ann Lease  
NM 37913  
Dugan Production Corp.

28

Baby Doe Lease  
NM 33044  
Dugan Production Corp.

APPLICATION FOR  
UNORTHODOX LOCATION  
OFFSETTING OPERATORS

DUGAN PRODUCTION CORP.  
KR #15  
2310' FSL - 330' FEL  
Sec. 20, T27N, R13W, NMPM  
San Juan County, NM