

UNITED STATES
DEPARTMENT OF THE INTERIOR
BUREAU OF LAND MANAGEMENT

APPLICATION FOR PERMIT TO DRILL, DEEPEN, OR PLUG BACK

RECEIVED
JUL 8 1989

OIL CON. DIV.
DIST. 3

1a. TYPE OF WORK
DRILL

1b. TYPE OF WELL
GAS

2. OPERATOR
MERIDIAN OIL INC.

3. ADDRESS & PHONE NO. OF OPERATOR
P O BOX 4289
FARMINGTON, NM 87499

4. LOCATION OF WELL
1330'N 1850'E

5. LEASE NUMBER
SF-078499A

6. IF INDIAN, ALL. OR TRIBE NAME

7. UNIT AGREEMENT NAME

8. FARM OR LEASE NAME
HARDIE E COM

9. WELL NO.
806

10. FIELD, POOL, OR WILDCAT
BASIN FRUITLAND COAL

11. SEC. T. R. M OR BLK.
G SEC. 23 T28N R08W NMPM

12. COUNTY
SAN JUAN

13. STATE
NM

14. DISTANCE IN MILES FROM NEAREST TOWN
11 MILES FROM BLANCO

15. DISTANCE FROM PROPOSED LOCATION TO NEAREST PROPERTY OR LEASE LINE.
1330'

16. ACRES IN LEASE
207.80

17. ACRES ASSIGNED TO WELL
320.00

18. DISTANCE FROM PROPOSED LOCATION TO NEAREST WELL DR. COMPL., OR APPLIED FOR ON THIS LEASE.
300'

19. PROPOSED DEPTH
2740'

20. ROTARY OR CABLE TOOLS
ROTARY

21. ELEVATIONS (DF, FT, GR, ETC.)
6249'GL

22. APPROX. DATE WORK WILL START

*SEE OPERATIONS PLAN

24. AUTHORIZED BY: *[Signature]*
REGULATORY AFFAIRS

7-10-89
DATE

APPROVED
AS APPOINTED

PERMIT NO. _____ APPROVAL DATE _____
APPROVED BY _____ TITLE _____ DATE _____

JUL 24 1989
[Signature]
AREA MANAGER

NOTE: THIS FORMAT IS ISSUED IN LIEU OF US BLM FORM 3160

Hold C-104 For CA (C) NMCCD

Submit to Appropriate District Office
State Leases - 4 copies
Fee Lease - 3 copies

State of New Mexico
Energy, Minerals and Natural Resources Department

Form C-102
Revised 1-1-89

OIL CONSERVATION DIVISION
P.O. Box 2088
Santa Fe, New Mexico 87504-2088

DISTRICT I
P.O. Box 1980, Hobbs, NM 88240

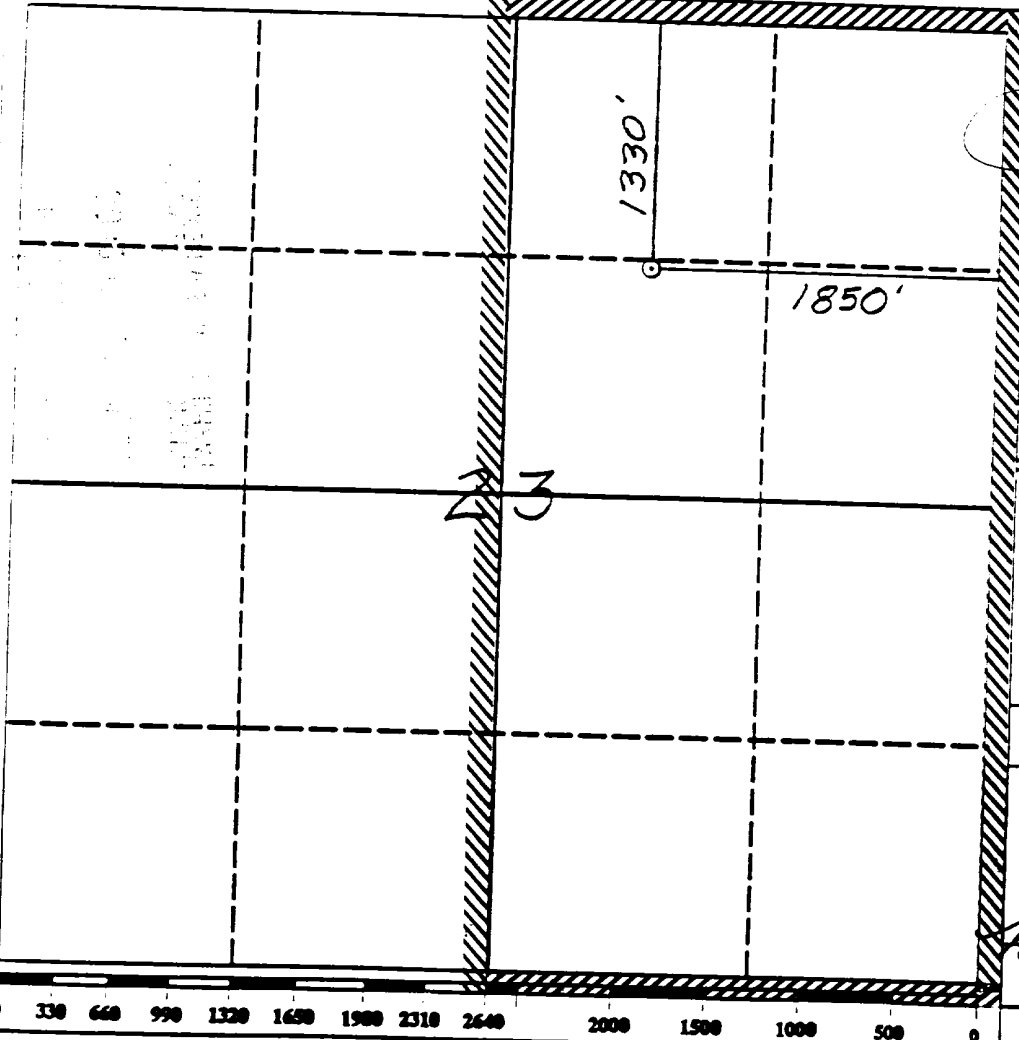
DISTRICT II
P.O. Drawer DD, Artesia, NM 88210

DISTRICT III
1000 Rio Brazos Rd., Aztec, NM 87410

WELL LOCATION AND ACREAGE DEDICATION PLAT
All Distances must be from the outer boundaries of the section

Operator Meridian Oil Inc.		Lease Hardie E Com (SF-078499A)		Well No. 806
Unit Lease 4	Section 23	Township 28 North	Range 3 West	County NMEM San Juan
Actual Footage Location of Well: 1330 feet from the North line and 1850 feet from the East line				
Ground level Elev. 6249	Producing Formation Fruitland Coal		Pool Basin	Dedicated Acreage: 320.00 Acres

- Outline the acreage dedicated to the subject well by colored pencil or hectare marks on the plat below.
 - If more than one lease is dedicated to the well, outline each and identify the ownership thereof (both as to working interest and royalty).
 - If more than one lease of different ownership is dedicated to the well, have the interest of all owners been consolidated by communitization, unitization, force-pooling, etc.?
 - Yes No
 - If answer is "yes" type of consolidation communitization agreement will obtained
- If answer is "no" list the owners and tract descriptions which have actually been consolidated. (Use reverse side of this form if necessary.)
- No allowable will be assigned to the well until all interests have been consolidated (by communitization, unitization, force-pooling, or otherwise) or until a non-standard unit, eliminating such interest, has been approved by the Division.



OPERATOR CERTIFICATION
I hereby certify that the information contained herein is true and complete to best of my knowledge and belief.

Peggy Bradford
Signature
Peggy Bradford
Printed Name
Regulatory Affairs
Position
Meridian Oil Inc.
Company
7-10-89
Date

SURVEYOR CERTIFICATION
I hereby certify that the well location shown on this plat was plotted from field notes actual surveys made by me or under supervision, and that the same is true and correct to the best of my knowledge and belief.

7-13-89
Date Surveyed
Neale C. Edwards
Signature of Surveyor
Professional Surveyor
6857
Certificate No.
6857

Well Name: 806 HARDIE E COM
 Sec. 23 T28N R08W
 BASIN FRUITLAND COAL

1330'N 1850'E
 SAN JUAN NEW MEXICO
 Elevation 6249'GL

Formation tops: Surface- SAN JOSE
 Ojo Alamo- 1940
 Kirtland- 1980
 Fruitland- 2500
 Fruitland Coal Top- 2634
 Fruitland Coal Base- 2725
 Total Depth- 2740
 Pictured Cliffs- 2778

Logging Program: Mud logs from 2500 to total depth.

Mud Program:	Interval	Type	Weight	Visc.	Fl. Loss
	0 - 200	Spud	8.4 - 8.9	40-50	no control
	200 - 2740	Non-dispersed	8.4 - 9.5	30-60	no control

Casing Program:	Hole Size	Depth Interval	Csg. Size	Weight	Grade
	12 1/4"	0 - 200	8 5/8"	24.0#	K-40
	7 7/8"	0 - 2740	5 1/2"	15.5#	K-55
Tubing Program:		0 - 2740	2 3/8"	4.7#	J-55

Float Equipment: 8 5/8" surface casing - saw tooth guide shoe.

5 1/2" production casing - float shoe on bottom.
 Three centralizers run every other joint above shoe.

Wellhead Equipment: 8 5/8" x 5 1/2" x 2 3/8" x 11" 3000 psi xmas tree assembl

Cementing:

8 5/8" surface casing - cement with 140 sacks of class "B" cement with 1/4# flocele/sack and 3% calcium chloride (165 cu ft. of slurry, 100% excess to circulate to surface). WOC 12 hours. Test casing to 600 psi for 30 minutes.

5 1/2" production casing - lead with 83 sacks of 65/35 class "B" poz with 6% gel, 2% calcium chloride and 1/2 cu.ft. Perlite/sack (10.3 gallons of water/sack) tail with 100 sacks of class "B" with 2% calcium chloride. 277 cu ft. of slurry, 100% excess to cover the Ojo Alamo. Run temperature survey at 8 hours. WOC 12 hours. Test casing to 1500 psi for 30 minutes.

CANYON

Cutler

CANYON

BLM ROW

Applied For ROW
(Hardie D #800)

7

18

15

14

2

SFO78499 A

SFO78459A

SFO78459A

Applied For ROW
(Hardie #805)

Fee Lands

BLM ROW

Fee Lands

BLM ROW
HARDIE E DOM 806
T28U,28W
Section 14: W2SE
SE SW 2800'
NE NE 100'
NW NE 800'
SW SE 1300'
NW SE 900'

Fee Lands

BLM ROW

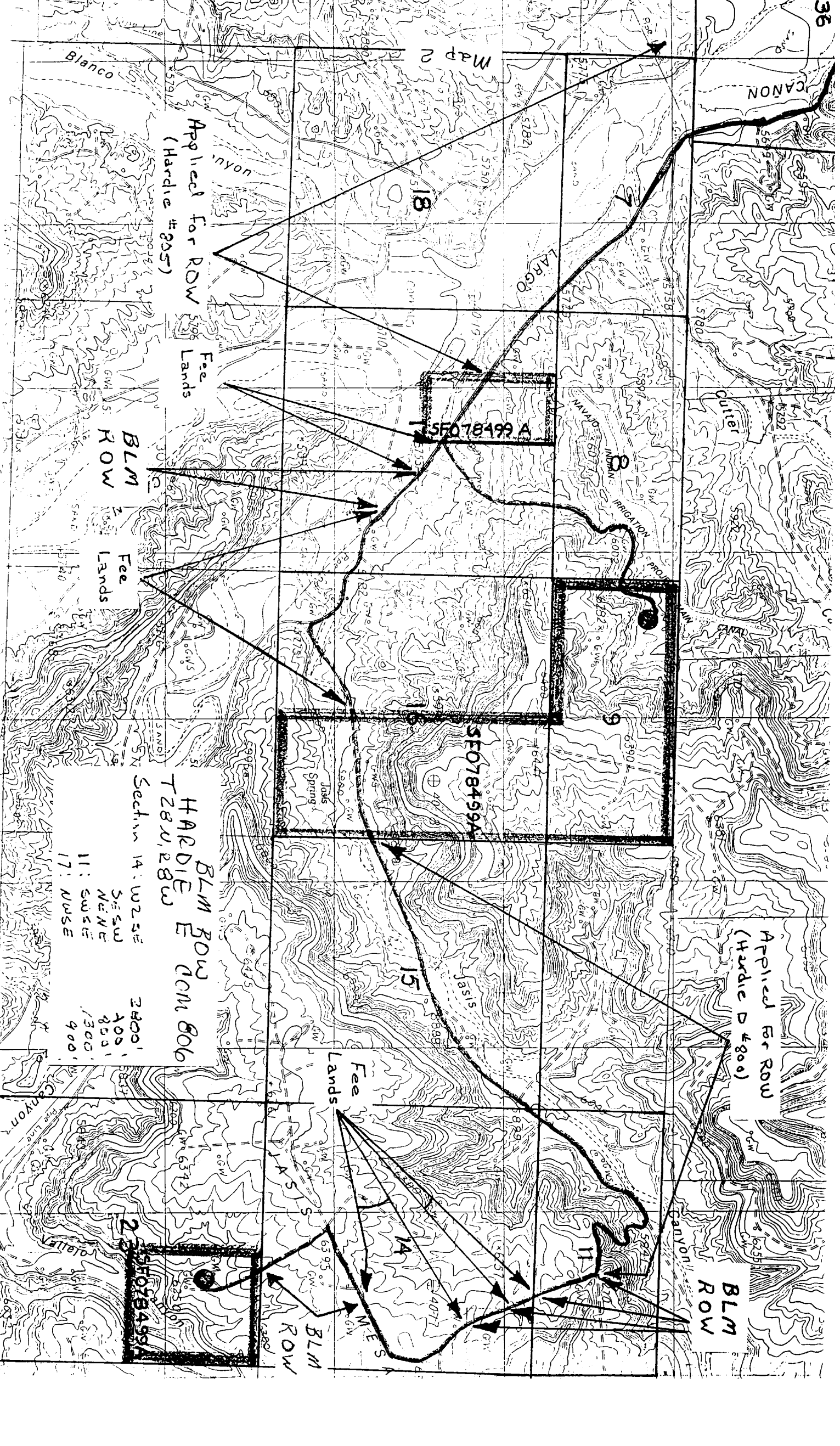
SE SW
NE NE
SW SE
NW SE

BLM ROW

BLM ROW

BLM ROW

BLM ROW



Map 2

Blanco

nyon

nyon

nyon

nyon

nyon

nyon

nyon

nyon