

UNITED STATES
DEPARTMENT OF THE INTERIOR
BUREAU OF LAND MANAGEMENT

APPLICATION FOR PERMIT TO DRILL, DEEPEN, OR PLUG BACK

1a. TYPE OF WORK

DRILL ☒

DEEPEN ☐

PLUG BACK ☐

b. TYPE OF WELL

OIL
WELL ☐

GAS
WELL ☒

OTHER

SINGLE
ZONE ☒

MULTIPLE
ZONE ☐

2. NAME OF OPERATOR

McKenzie Methane Corporation

3. ADDRESS OF OPERATOR

1625 Broadway, Suite 2580

4. LOCATION OF WELL (Report location clearly and in accordance with any State requirements.)*

At surface

1400' FSL, 1800' FWL

At proposed prod. zone

same

14. DISTANCE IN MILES AND DIRECTION FROM NEAREST TOWN OR POST OFFICE*

±6 miles south, south-east of Bloomfield, New Mexico

15. DISTANCE FROM PROPOSED*

LOCATION TO NEAREST
PROPERTY OR LEASE LINE, FT.
(Also to nearest drlg. unit line, if any)

1440

16. NO. OF ACRES IN LEASE

±1240 1480

17. NO. OF ACRES ASSIGNED
TO THIS WELL

320 W 1/2

18. DISTANCE FROM PROPOSED LOCATION*

TO NEAREST WELL, DRILLING, COMPLETED,
OR APPLIED FOR, ON THIS LEASE, FT.

±400'

19. PROPOSED DEPTH

2175'

20. ROTARY OR CABLE TOOLS

rotary

21. ELEVATIONS (Show whether DF, RT, GR, etc.)

6261'

22. APPROX. DATE WORK WILL START*

April 30, 1990

This action is subject to technical and

procedural review pursuant to 43 CFR 3160.3

and appeal pursuant to 43 CFR 3160.4.

PROPOSED CASING AND CEMENTING PROGRAM

SUBJECT TO COMPLIANCE WITH ATTACHED

GENERAL REQUIREMENTS

SIZE OF HOLE	SIZE OF CASING	WEIGHT PER FOOT	SETTING DEPTH	GENERAL REQUIREMENTS
12-1/2"	8-5/8"	24#	250'	175sx C1 'B' w/ 2% CaCl
7-7/8"	4-1/2"	11.6#	2175'	300sx 65/35 POZ + 1#/sx flocele + 6% gel & 125sx 50/50 POZ + 2% CaCl

RECEIVED

MAY 01 1990

OIL CON. DIV.
DIST. 3

"Approval of this action does
not constitute a commitment
on the part of the BLM to
or state of mind."

IN ABOVE SPACE DESCRIBE PROPOSED PROGRAM: If proposal is to deepen or plug back, give data on present productive zone and proposed new productive zone. If proposal is to drill or deepen directionally, give pertinent data on subsurface locations and measured and true vertical depths. Give blowout preventer program, if any.

24.

SIGNED

Heather Rack

TITLE

Technician

DATE

March 27, 1990

(This space for Federal or State office use)

PERMIT NO.

APPROVAL DATE

APPROVED
AS AMENDED

APPROVED BY

TITLE

DATE

APR 26 1990

CONDITIONS OF APPROVAL, IF ANY:

NMOCD

AREA MANAGER

*See Instructions On Reverse Side

1. The first part of the paper is devoted to a discussion of the various ways in which the concept of "truth" has been used in philosophy. It is shown that the concept has been used in a variety of ways, and that these uses have often been confused with one another. The second part of the paper is devoted to a discussion of the various ways in which the concept of "truth" has been used in science. It is shown that the concept has been used in a variety of ways, and that these uses have often been confused with one another.

REFERENCES

1. T. V. Smith, "The Philosophy of Language," *Philosophical Review*, 1958, 67, 1-15.
2. T. V. Smith, "The Philosophy of Language," *Philosophical Review*, 1958, 67, 1-15.
3. T. V. Smith, "The Philosophy of Language," *Philosophical Review*, 1958, 67, 1-15.
4. T. V. Smith, "The Philosophy of Language," *Philosophical Review*, 1958, 67, 1-15.
5. T. V. Smith, "The Philosophy of Language," *Philosophical Review*, 1958, 67, 1-15.
6. T. V. Smith, "The Philosophy of Language," *Philosophical Review*, 1958, 67, 1-15.
7. T. V. Smith, "The Philosophy of Language," *Philosophical Review*, 1958, 67, 1-15.
8. T. V. Smith, "The Philosophy of Language," *Philosophical Review*, 1958, 67, 1-15.
9. T. V. Smith, "The Philosophy of Language," *Philosophical Review*, 1958, 67, 1-15.
10. T. V. Smith, "The Philosophy of Language," *Philosophical Review*, 1958, 67, 1-15.

Submit to Appropriate
District Office
State Lease - 4 copies
Fee Lease - 3 copies

State of New Mexico
Energy, Minerals and Natural Resources Department

Form C-102
Revised 1-1-89

OIL CONSERVATION DIVISION

DISTRICT I
P.O. Box 1980, Hobbs, NM 88240

P.O. Box 2088

Santa Fe, New Mexico 87504-2088

DISTRICT II
P.O. Drawer DD, Artesia, NM 88210

DISTRICT III
1000 Rio Brazos Rd., Aztec, NM 87410

WELL LOCATION AND ACREAGE DEDICATION PLAT

All Distances must be from the outer boundaries of the section

Operator McKenzie Methane Corporation			Lease Angel Peak 10 K		Well No. 3
Unit Letter K	Section 10	Township 27 North	Range 10 West	County San Juan	
Actual Footage Location of Well: 1400 feet from the South line and 1800 feet from the West line					
Ground level Elev. 6261	Producing Formation <i>fat</i>		Pool <i>Basin</i>	Dedicated Acreage: Acres	

- Outline the acreage dedicated to the subject well by colored pencil or hatchure marks on the plat below.
- If more than one lease is dedicated to the well, outline each and identify the ownership thereof (both as to working interest and royalty).
- If more than one lease of different ownership is dedicated to the well, have the interest of all owners been consolidated by communitization, unitization, force-pooling, etc.?
☐ Yes ☐ No If answer is "yes" type of consolidation _____
If answer is "no" list the owners and tract descriptions which have actually been consolidated. (Use reverse side of this form if necessary.)
No allowable will be assigned to the well until all interests have been consolidated (by communitization, unitization, forced-pooling, or otherwise) or until a non-standard unit, eliminating such interest, has been approved by the Division.

OPERATOR CERTIFICATION

I hereby certify that the information contained herein is true and complete to the best of my knowledge and belief.

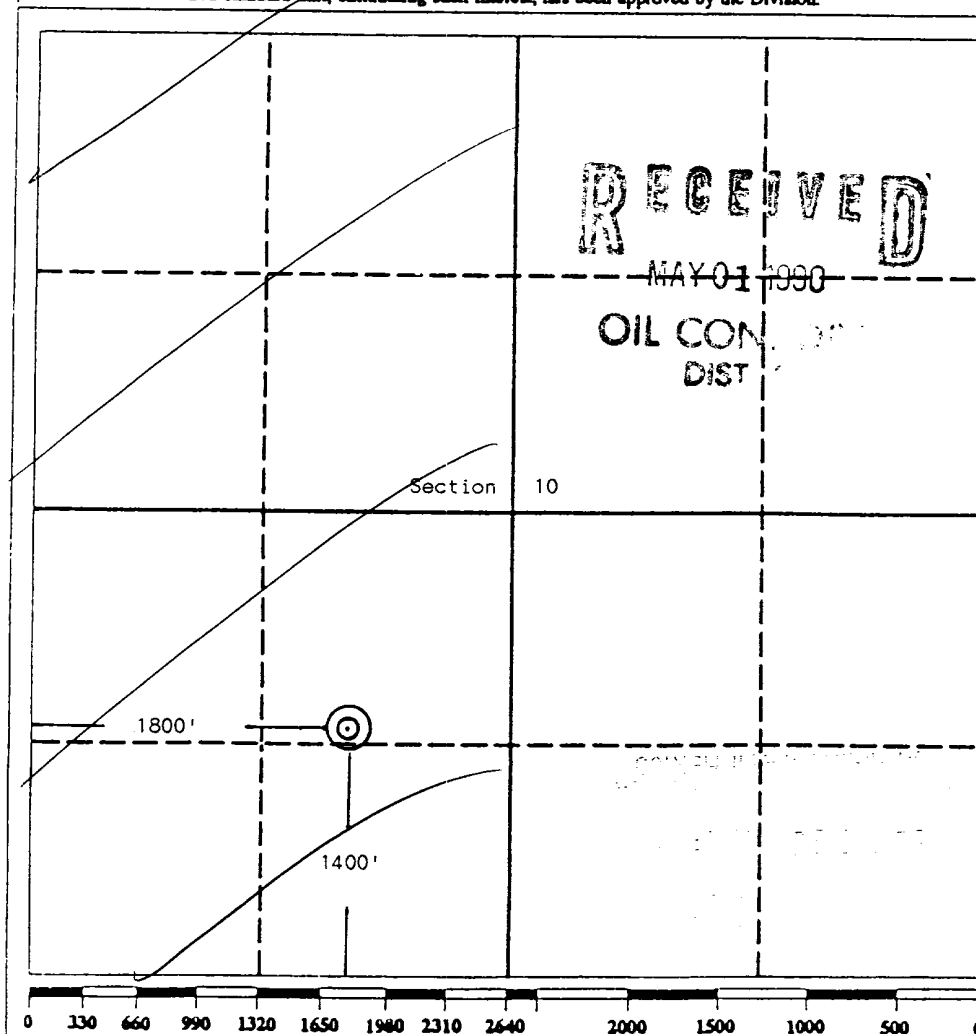
Signature *R. J. Sagie*
Printed Name *R. J. Sagie*
Position *Petroleum Engineer*
Company *McKenzie Methane Corp.*
Date *4/19/90*

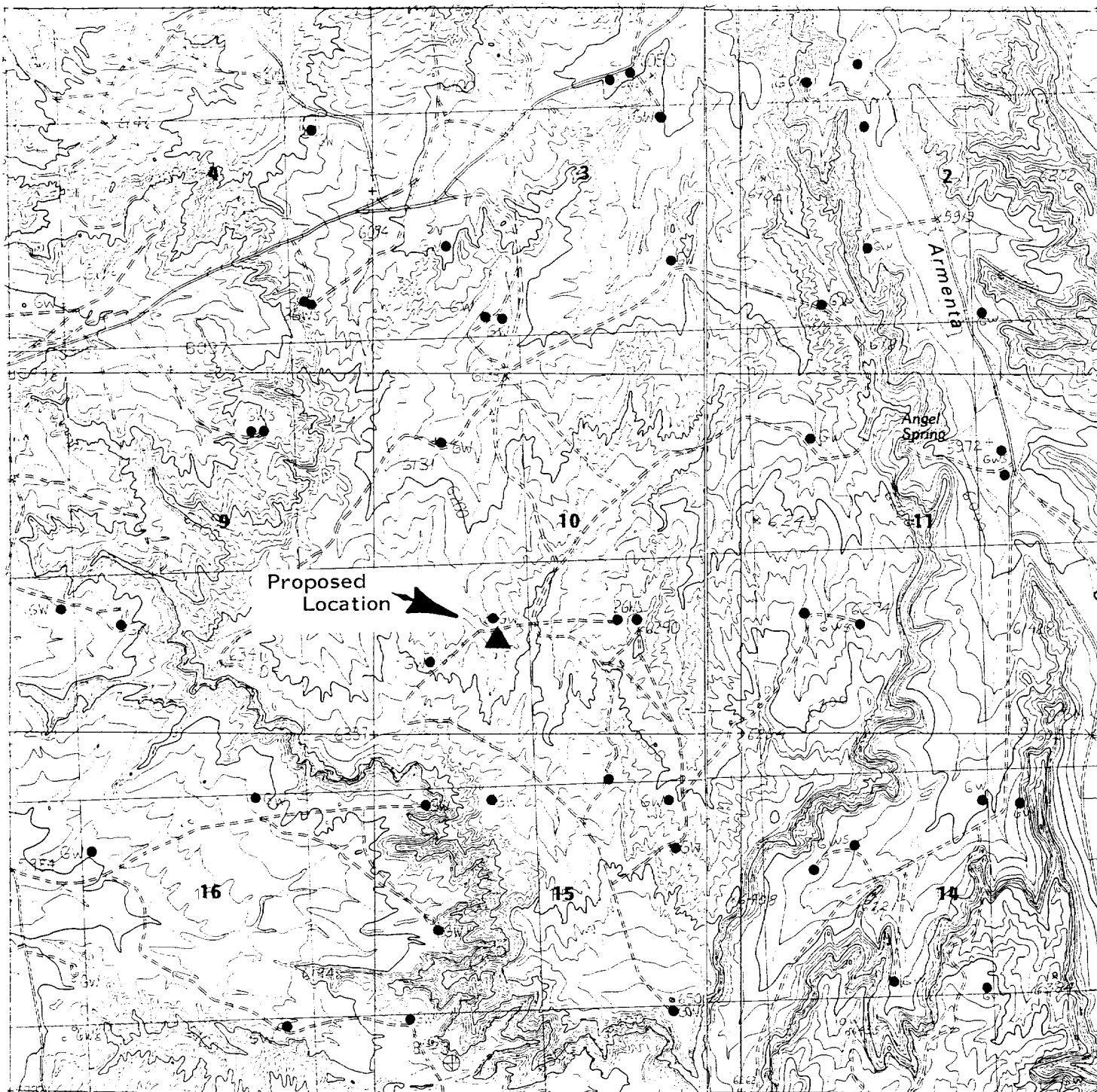
SURVEYOR CERTIFICATION

I hereby certify that the well location shown on this plat was plotted from field notes of actual surveys made by me or under my supervision, and that the same is true and correct to the best of my knowledge and belief.

Date Surveyed April 16, 1990

Signature & Seal of Professional Surveyor
Edgar E. Risenhoover
Certificate No. *5979*
Edgar E. Risenhoover





McKenzie Methane Corporation

HOUSTON • BIRMINGHAM • DENVER • FARMINGTON

ANGEL PEAK 10K #3
SW $\frac{1}{4}$ Section 10
Township 27 North, Range 10 West
San Juan County, New Mexico