

UNITED STATES  
DEPARTMENT OF THE INTERIOR

## GEOLOGICAL SURVEY

## APPLICATION FOR PERMIT TO DRILL, DEEPEN, OR PLUG BACK

## 1a. TYPE OF WORK

DRILL ☒DEEPEN ☐PLUG BACK ☐

## b. TYPE OF WELL

OIL  
WELL ☐GAS  
WELL ☒

OTHER

SINGLE  
ZONE ☒MULTIPLE  
ZONE ☐

## 2. NAME OF OPERATOR

Marathon Oil Company

## 3. ADDRESS OF OPERATOR

P. O. Box 552, Midland, TX 79702

## 4. LOCATION OF WELL (Report location clearly and in accordance with any State requirements.)\*

At surface

790' FNL &amp; 1625' FEL

At proposed prod. zone

790' FNL &amp; 1625' FEL

## 14. DISTANCE IN MILES AND DIRECTION FROM NEAREST TOWN OR POST OFFICE\*

8.5 miles south of Bloomfield, NM

## 15. DISTANCE FROM PROPOSED\*

PROPERTY OR LEASE LINE, FT.

(Also to nearest drlg. unit line, if any)

790'

## 16. NO. OF ACRES IN LEASE

320 2406.74

## 17. NO. OF ACRES ASSIGNED

TO THIS WELL

E/320

## 18. DISTANCE FROM PROPOSED LOCATION\*

TO NEAREST WELL, DRILLING, COMPLETED,  
OR APPLIED FOR, ON THIS LEASE, FT.

None on lease

## 19. PROPOSED DEPTH

± 2000'

## 20. ROTARY OR CABLE TOOLS

Rotary

## 21. ELEVATIONS (Show whether DF, RT, GR, etc.)

6195.8' GR This action is subject to technical and  
procedural review pursuant to 43 CFR 3165.3

## 23. and appeal pursuant to 43 CFR 3165.3 AND CEMENTING PROGRAM

## 22. APPROX. DATE WORK WILL START\*

May 1, 1990

DRILLING OPERATIONS AUTHORIZED ARE

SUBJECT TO COMPLIANCE WITH ATTACHED

"GENERAL REQUIREMENTS"

SIZE OF HOLE	SIZE OF CASING	WEIGHT PER FOOT	SETTING DEPTH	QUANTITY OF CEMENT
11"	8-5/8"	24#	250'	175 sacks circ to surface
7-7/8"	5-1/2"	15.5#	2000'	315 sacks circ to surface

Propose to drill to TD of ± 2000'.

All casing will be run and cemented in accordance with regulations and by  
approved methods.

Blowout prevention equipment will be as outlined in Additional Information.

See attached Multipoint Surface Use Plan and Additional Information for  
specific drilling operations.

RECEIVED

MAY 21 1990

OIL CON. DIV.

DIST. 3

IN ABOVE SPACE DESCRIBE PROPOSED PROGRAM: If proposal is to deepen or plug back, give data on present productive zone and proposed new productive  
zone. If proposal is to drill or deepen directionally, give pertinent data on subsurface locations and measured and true vertical depths. Give blowout  
prevention program, if any.

24.

SIGNED

TITLE Drilling Superintendent

DATE

4/4/90

(This space for Federal or State office use)

PERMIT NO.

APPROVAL DATE

APPROVED BY

TITLE

CONDITIONS OF APPROVAL, IF ANY:

\*See Instructions On Reverse Side

Submit to Appropriate  
District Office  
State Lease - 4 copies  
Fee Lease - 3 copies

State of New Mexico  
Energy, Minerals and Natural Resources Department

Form C-102  
Revised 1-1-89

OIL CONSERVATION DIVISION

P.O. Box 2088  
Santa Fe, New Mexico 87504-2088

DISTRICT I  
P.O. Box 1980, Hobbs, NM 88240

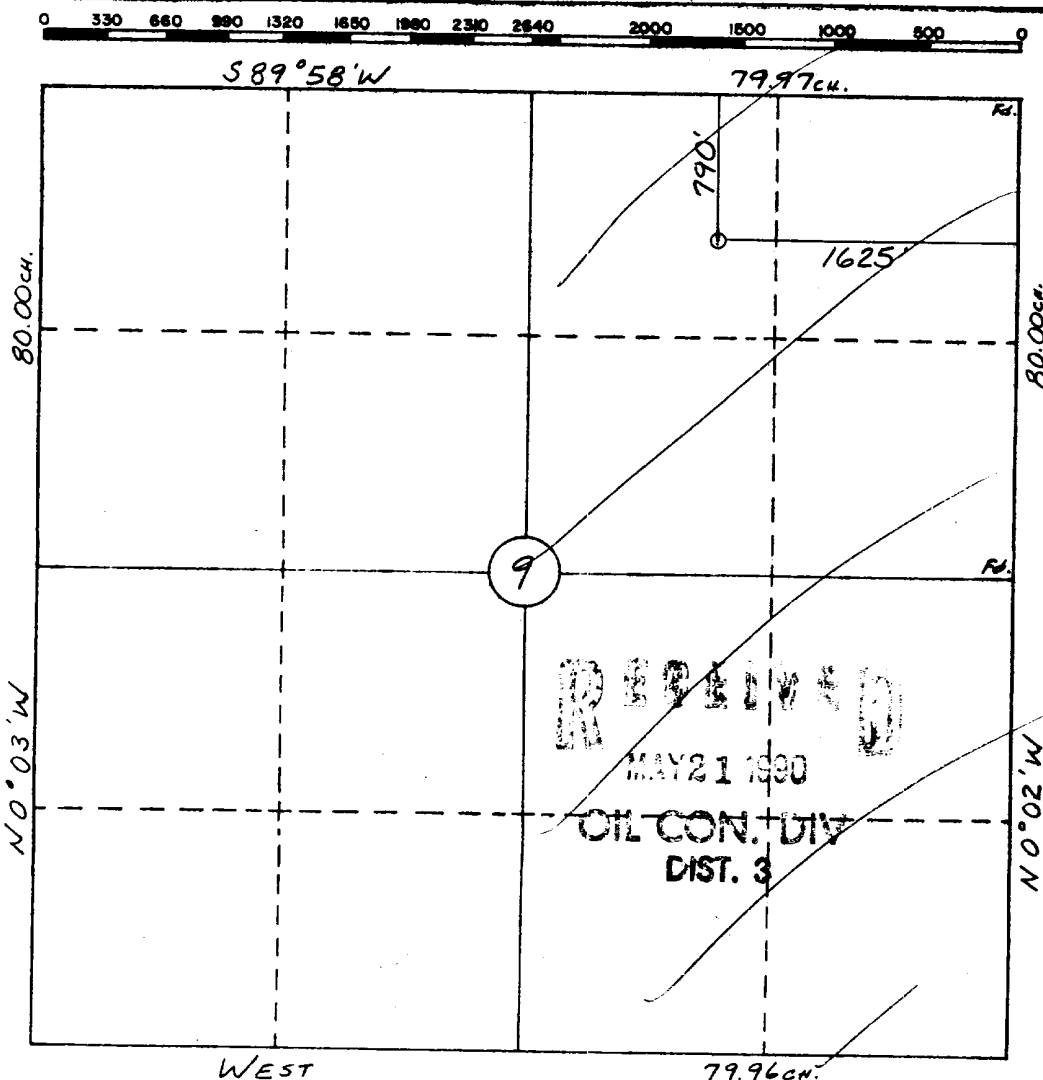
DISTRICT II  
P.O. Drawer DD, Artesia, NM 88210

DISTRICT III  
1000 Rio Brazos Rd., Aztec, NM 87410

WELL LOCATION AND ACREAGE DEDICATION PLAT

All Distances must be from the outer boundaries of the section

Operator MARATHON OIL COMPANY			Lease BOLACK 9		Well No. 8-2
Unit Letter B	Section 9	Township 27 N	Range 11 W	County San Juan	
Actual Footage Location of Well: 790 feet from the North line and 1625 feet from the East line					
Ground level Elev. 6196	Producing Formation Fruitland Coal	Pool Basin Fruitland Coal		Dedicated Acreage: 320 Acres	
<p>1. Outline the acreage dedicated to the subject well by colored pencil or hatchure marks on the plat below.</p> <p>2. If more than one lease is dedicated to the well, outline each and identify the ownership thereof (both as to working interest and royalty).</p> <p>3. If more than one lease of different ownership is dedicated to the well, have the interest of all owners been consolidated by communitization, unitization, force-pooling, etc.?</p> <p><input type="checkbox"/> Yes <input type="checkbox"/> No If answer is "yes" type of consolidation _____</p> <p>If answer is "no" list the owners and tract descriptions which have actually been consolidated. (Use reverse side of this form if necessary.) _____</p> <p>No allowable will be assigned to the well until all interests have been consolidated (by communitization, unitization, forced-pooling, or otherwise) or until a non-standard unit, eliminating such interest, has been approved by the Division.</p>					



OPERATOR CERTIFICATION

I hereby certify that the information contained herein is true and complete to the best of my knowledge and belief.

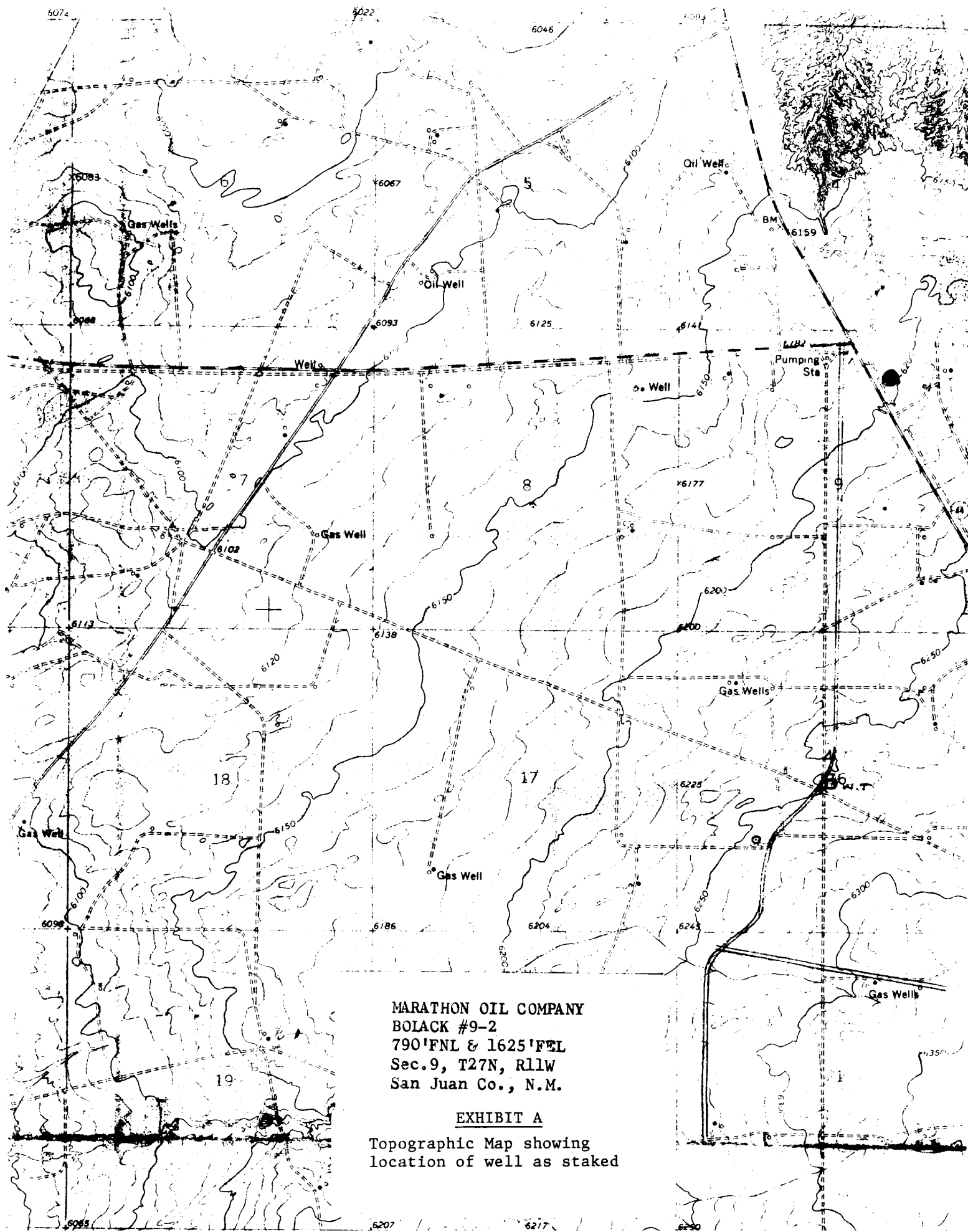
Signature  
S. L. Atnipp  
Printed Name  
S. L. Atnipp  
Position  
Drilling Superintendent  
Company  
Marathon Oil Company  
Date  
4/4/90

SURVEYOR CERTIFICATION

I hereby certify that the well location shown on this plat was plotted from field notes of actual surveys made by me or under my supervision, and that the same is true and correct to the best of my knowledge and belief.

3-9-90

Date Surveyed  
William W. Mahnke II  
Signature of Professional Surveyor  
NEW MEXICO  
#8466  
Certified No. 8466  
PROFESSIONAL LAND SURVEYOR



MARATHON OIL COMPANY  
BOLACK #9-2  
790'FNL & 1625'FEL  
Sec.9, T27N, R11W  
San Juan Co., N.M.

EXHIBIT A

Topographic Map showing  
location of well as staked