

UNITED STATES  
DEPARTMENT OF THE INTERIOR  
GEOLOGICAL SURVEY

## APPLICATION FOR PERMIT TO DRILL, DEEPEN, OR PLUG BACK

## 1a. TYPE OF WORK

DRILL ☒DEEPEN ☐PLUG BACK ☐

## b. TYPE OF WELL

OIL  
WELL ☐GAS  
WELL ☒OTHER ☐SINGLE  
ZONE ☒MULTIPLE  
ZONE ☐

## 2. NAME OF OPERATOR

Marathon Oil Company

## 3. ADDRESS OF OPERATOR

P. O. Box 552, Midland, TX 79702

## 4. LOCATION OF WELL (Report location clearly and in accordance with any State requirements.\*)

At surface  
1850' FEL & 1100' FNL

At proposed prod. zone

1850' FEL &amp; 1100' FNL

## 14. DISTANCE IN MILES AND DIRECTION FROM NEAREST TOWN OR POST OFFICE\*

8.1 miles south of Bloomfield, NM

## 15. DISTANCE FROM PROPOSED\*

LOCATION TO NEAREST  
PROPERTY OR LEASE LINE, FT.  
(Also to nearest drig. unit line, if any)

1100'

## 16. NO. OF ACRES IN LEASE

320 2081.12

17. NO. OF ACRES ASSIGNED  
TO THIS WELL

E/320

18. DISTANCE FROM PROPOSED LOCATION\*  
TO NEAREST WELL DRILLING, COMPLETED,  
OR APPLIED FOR, ON THIS LEASE, FT.

None on lease

## 19. PROPOSED DEPTH

1950'

## 20. ROTARY OR CABLE TOOLS

Rotary

## 21. ELEVATIONS (Show whether DF, RT, GR, etc.)

6142' GR

This action is subject to technical and  
procedural review pursuant to 43 CFR 3165.3

## 22. APPROX. DATE WORK WILL START\*

April 1, 1990

23. ~~and appeal pursuant to 43 CFR 3165.4~~ ~~and appeal pursuant to 43 CFR 3165.4~~ ~~and appeal pursuant to 43 CFR 3165.4~~

SIZE OF HOLE	SIZE OF CASING	WEIGHT PER FOOT	SETTING DEPTH	QUANTITY OF CEMENT
11"	8-5/8"	24#	250'	175 sacks circ to surface
7-7/8"	5-1/2"	15.5#	1950'	315 sacks circ to surface

Propose to drill to TD of  $\pm$  1950'.All casing will be run and cemented in accordance with regulations and by  
approved methods.

Blowout prevention equipment will be as outlined in Additional Information.

See attached Multipoint Surface Use Plan and Additional Information for  
specific drilling operations.RECEIVED  
MAY 21 1990  
OIL CON. DIV.

IN ABOVE SPACE DESCRIBE PROPOSED PROGRAM: If proposal is to deepen or plug back, give data on present productive zone and proposed new productive zone. If proposal is to drill or deepen directionally, give pertinent data on subsurface locations and measured and true vertical depths. Give blowout preventer program, if any.

24.

SIGNED

TITLE Drilling SuperintendentDATE 4/12/90

(This space for Federal or State office use)

PERMIT NO. \_\_\_\_\_

APPROVAL DATE \_\_\_\_\_

APPROVED BY \_\_\_\_\_

TITLE \_\_\_\_\_

CONDITIONS OF APPROVAL, IF ANY:

NMOCD

\*See Instructions On Reverse Side

APPROVED  
AS AMENDED

MAY 16 1990

AREA MANAGER

Submit to Appropriate  
District Office  
State Lease - 4 copies  
Fee Lease - 3 copies

State of New Mexico  
Energy, Minerals and Natural Resources Department

Form C-102  
Revised 1-1-80

OIL CONSERVATION DIVISION

P.O. Box 2088  
Santa Fe, New Mexico 87504-2088

DISTRICT I  
P.O. Box 1980, Hobbs, NM 88240

DISTRICT II  
P.O. Drawer DD, Artesia, NM 88210

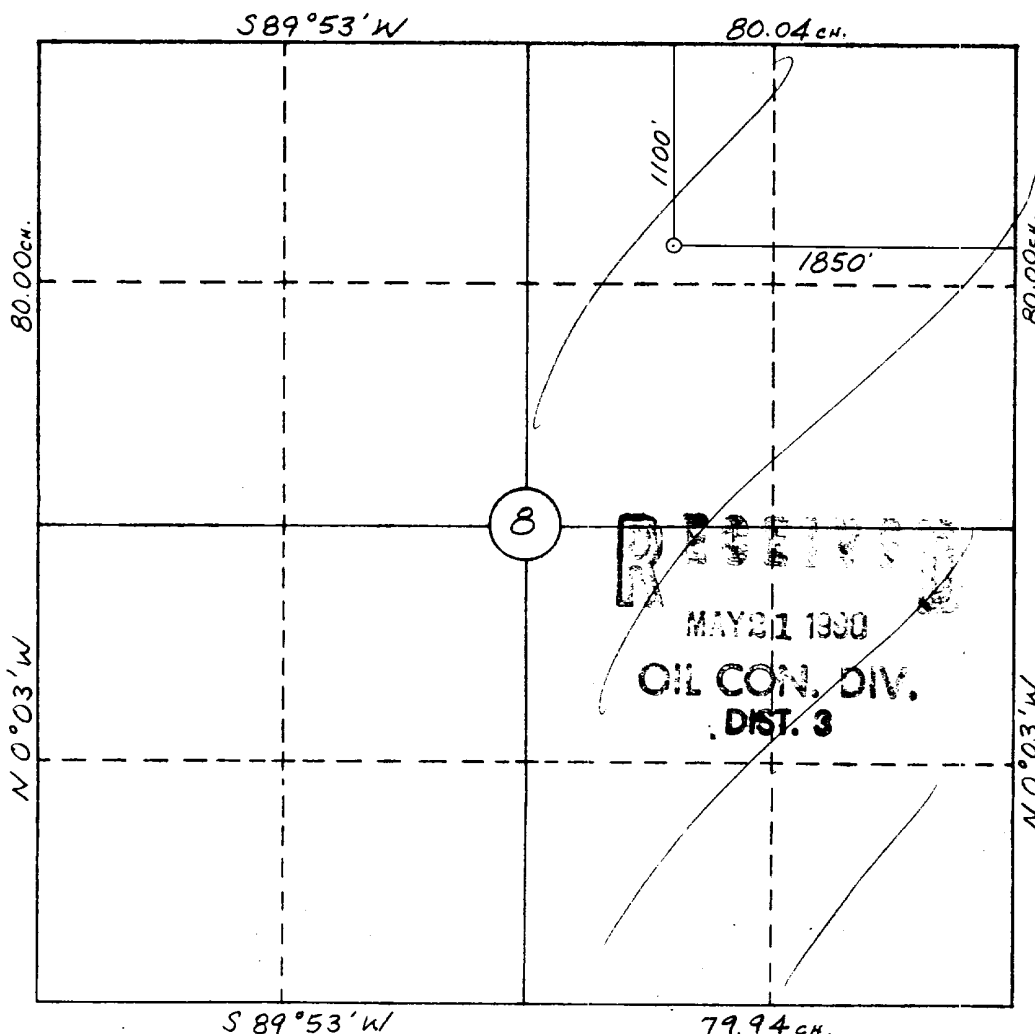
DISTRICT III  
1000 Rio Brazos Rd., Aztec, NM 87410

WELL LOCATION AND ACREAGE DEDICATION PLAT

All Distances must be from the outer boundaries of the section

Operator MARATHON OIL COMPANY			Lease SCHWERTFEGER 8		Well No. 81
Unit Letter B	Section 8	Township 27 N	Range 11 W	County San Juan	
Actual Footage Location of Well: 1100 feet from the North line and 1850 feet from the East line					
Ground level Elev. 6142	Producing Formation Fruitland Coal		Pool Basin Fruitland Coal		Dedicated Acreage: 320 Acres
<p>1. Outline the acreage dedicated to the subject well by colored pencil or hatchure marks on the plat below.</p> <p>2. If more than one lease is dedicated to the well, outline each and identify the ownership thereof (both as to working interest and royalty).</p> <p>3. If more than one lease of different ownership is dedicated to the well, have the interest of all owners been consolidated by communitization, unitization, force-pooling, etc.? <input type="checkbox"/> Yes <input type="checkbox"/> No If answer is "yes" type of consolidation _____</p> <p>If answer is "no" list the owners and tract descriptions which have actually been consolidated. (Use reverse side of this form if necessary.) _____</p> <p>No allowable will be assigned to the well until all interests have been consolidated (by communitization, unitization, forced-pooling, or otherwise) or until a non-standard unit, eliminating such interest, has been approved by the Division.</p>					

0 330 660 990 1320 1650 1980 2310 2640 2970 3300 3630 3960 4290 4620 4950 5280 5610 5940 6270 6600



OPERATOR CERTIFICATION

I hereby certify that the information contained herein is true and complete to the best of my knowledge and belief.

Signature *S. L. Atnipp*  
Printed Name  
S. L. Atnipp  
Position  
Drilling Superintendent  
Company  
Marathon Oil Company  
Date  
4/10/90

SURVEYOR CERTIFICATION

I hereby certify that the well location shown on this plat was plotted from field notes of actual surveys made by me or under my supervision, and that the same is true and correct to the best of my knowledge and belief.

Date Surveyed  
3-8-90  
William E. Mahnke II  
Signature & Seal of Professional Surveyor  
WILLIAM E. MAHNKE II  
NEW MEXICO  
#8466  
REGISTERED PROFESSIONAL LAND SURVEYOR  
8466

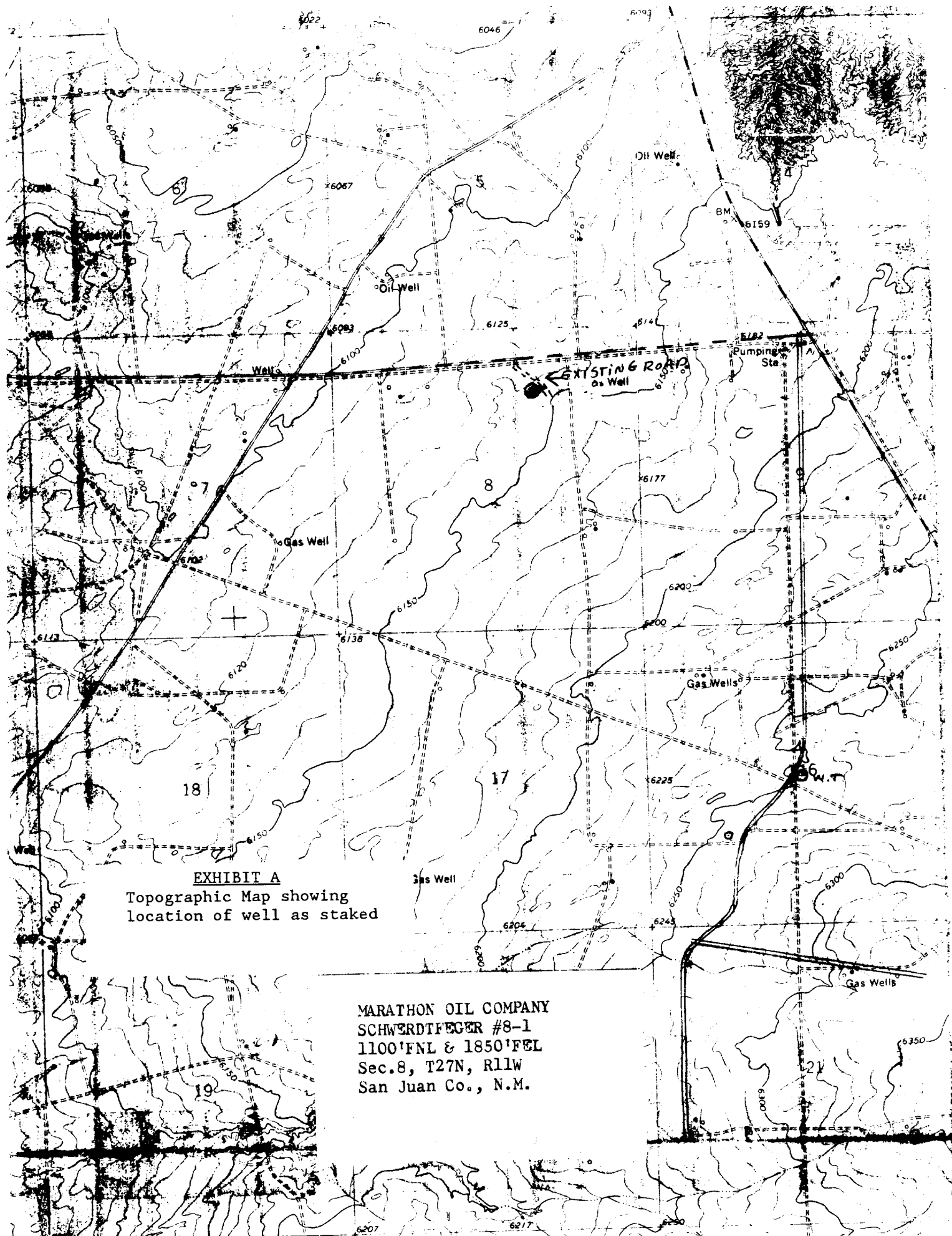


EXHIBIT A

Topographic Map showing  
location of well as staked

MARATHON OIL COMPANY  
SCHWERTFEGER #8-1  
1100'FNL & 1850'FEL  
Sec.8, T27N, R11W  
San Juan Co., N.M.