

30-045-28423

UNITED STATES
DEPARTMENT OF THE INTERIOR
BUREAU OF LAND MANAGEMENT

APPLICATION FOR PERMIT TO DRILL, DEEPEN, OR PLUG BACK

1a. TYPE OF WORK DRILL	5. LEASE NUMBER NM-03198
1b. TYPE OF WELL GAS	6. IF INDIAN, ALL. OR TRIBE NAME
2. OPERATOR MERIDIAN OIL INC.	7. UNIT AGREEMENT NAME
3. ADDRESS & PHONE NO. OF OPERATOR P O BOX 4289 FARMINGTON, NM 87499	8. FARM OR LEASE NAME FROST
4. LOCATION OF WELL 1005' FSL 1225' FWL	9. WELL NO. 502
14. DISTANCE IN MILES FROM NEAREST TOWN 18 MI. S/E OF BLOOMFIELD	10. FIELD, POOL, OR WILDCAT BASIN FRUITLAND COAL
	11. SEC. T. R. M OR BLK. M SEC. 25 T27N R10W NMPM
15. DISTANCE FROM PROPOSED LOCATION 1005' TO NEAREST PROPERTY OR LEASE LINE.	12. COUNTY SAN JUAN
16. ACRES IN LEASE 17. ACRES ASSIGNED TO WELL 382.16 W/ 320.00	13. STATE NM
18. DISTANCE FROM PROPOSED LOCATION TO NEAREST WELL DR. 400' COMPL., OR APPLIED FOR ON THIS LEASE.	19. PROPOSED DEPTH 2325' 2309'
20. ROTARY OR CABLE TOOLS ROTARY	
21. ELEVATIONS (DF, FT, GR, ETC.) 6541' GL	22. APPROX. DATE WORK WILL START

23. PROPOSED CASING AND CEMENTING PROGRAM

*SEE OPERATIONS PLAN

RECEIVED

NOV 20 1990

24. AUTHORIZED BY: CHANDLER JWC
REG. DRILLING ENGR. OIL CON. DIV
DIST. 310/17/90
DATEAPPROVED
AS AMENDED

PERMIT NO. _____ APPROVAL DATE _____

APPROVED BY _____ TITLE _____ DATE NOV 13 1990

AREA MANAGER

NOTE: THIS FORMAT IS ISSUED IN LIEU OF US BLM FORM 3160-3/

dk(e)

Submit to Appropriate
District Office
State Lease - 4 copies
Fee Lease - 3 copies

State of New Mexico
Energy, Minerals and Natural Resources Department

Form C-102
Revised 1-1-89

OIL CONSERVATION DIVISION

P.O. Box 2088
Santa Fe, New Mexico 87504-2088

DISTRICT I
P.O. Box 1980, Hobbs, NM 88240

DISTRICT II
P.O. Drawer DD, Artesia, NM 88210

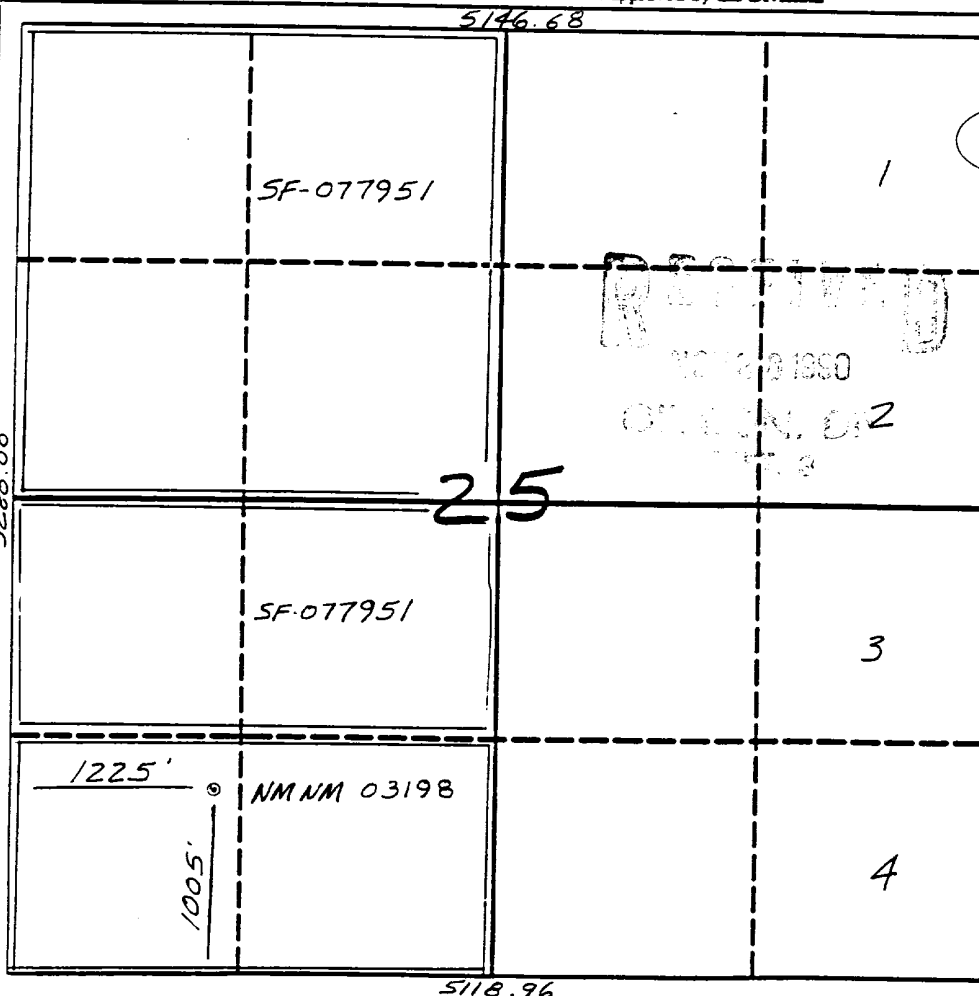
DISTRICT III
1000 Rio Brazos Rd., Aztec, NM 87410

WELL LOCATION AND ACREAGE DEDICATION PLAT

All Distances must be from the outer boundaries of the section

Operator Meridian Oil Inc.			Lease Frost		Well No. 502
Unit Letter M	Section 25	Township 27 North	Range 10 West	County NMNM San Juan	
Actual Footage Location of Well: 1005 feet from the South line and 1225 feet from the West line					
Ground level Elev. 6541'		Producing Formation Fruitland Coal		Pool Basin	Dedicated Acreage Acres

- Outline the acreage dedicated to the subject well by colored pencil or hectare marks on the plat below.
- If more than one lease is dedicated to the well, outline each and identify the ownership thereof (both as to working interest and royalty).
- If more than one lease of different ownership is dedicated to the well, have the interest of all owners been consolidated by communitization, unitization, force-pooling, etc.?
☐ Yes ☐ No If answer is "yes" type of consolidation _____
If answer is "no" list the owners and tract descriptions which have actually been consolidated. (Use reverse side of this form if necessary.)
No allowable will be assigned to the well until all interests have been consolidated (by communitization, unitization, force-pooling, or otherwise) or until a non-standard unit, eliminating such interest, has been approved by the Division.



OPERATOR CERTIFICATION

I hereby certify that the information contained herein is true and complete to the best of my knowledge and belief.

Signature *Peggy Bradford*

Printed Name Peggy Bradford

Position Regulatory Affairs

Company Meridian Oil Inc.

Date 10-17-90

SURVEYOR CERTIFICATION

I hereby certify that the well location shown on this plat was plotted from field notes of actual surveys made by me or under my supervision, and that the same is true and correct to the best of my knowledge and belief.

Date Surveyed 9-19-90

Signature *Neale C. Edwards*

Professional Seal

Well Name: 502 FROST 1005'FSL 1225'FWL
 Sec. 25 T27N R10W SAN JUAN NEW MEXICO
 BASIN FRUITLAND COAL Elevation 6541'GL

Formation tops: Surface- NACIMIENTO

Ojo Alamo-	1345	
Kirtland-	1529	
Fruitland-	2144	
Fruitland Coal Top-	2162	
Fruitland Coal Base-	2308	Total Depth-
Pictured Cliffs-	2309	2309

Logging Program: Mud logs from 2144 to total depth.

Mud Program:	Interval	Type	Weight	Visc.	Fl. Loss
	0 - 200	Spud	8.4 - 8.9	40-50	no control
	200 - 2309	Non-dispersed	8.4 - 9.5	30-60	no control

Casing Program:	Hole Size	Depth Interval	Csg. Size	Weight	Grade
	12 1/4"	0 - 200	8 5/8"	24.0#	K-40
	7 7/8"	0 - 2309	5 1/2"	15.5#	K-55
Tubing Program:		0 - 2309	2 3/8"	4.7#	J-55

Float Equipment: 8 5/8" surface casing - saw tooth guide shoe. Centralizers will be run in accordance with Onshore Order #2.

5 1/2" production casing - float shoe on bottom. Three centralizers run every other joint above shoe. Two turbolizing type centralizers - one below and one into the base of the Ojo Alamo @ 1529'. Standard centralizers thereafter every fourth joint up to the base of the surface pipe.

Wellhead Equipment: 8 5/8" x 5 1/2" x 2 3/8" x 11" 3000 psi xmas tree assembly

Cementing:

8 5/8" surface casing - cement with 211 sacks of class "B" cement with 1/4# flocele/sack and 3% calcium chloride (248 cu ft. of slurry, 200% excess to circulate to surface). WOC 12 hours. Test casing to 600 psi for 30 minutes.

5 1/2" production casing - lead with 357 sacks of 65/35 class "B" poz with 6% gel, 2% calcium chloride and 1/2 cu.ft. Perlite/sack (10.3 gallons of water/sack) tail with 100 sacks of class "B" with 2% calcium chloride. 807 cu ft. of slurry, 100% excess to circulate to surface. If hole conditions permit, a 600 ft spacer will be run ahead of the cement slurry to avoid mud contamination of the cement. WOC 12 hours. If cement does not circulate to surface, a temperature log will be run after 8 hours to determine TOC.