

UNITED STATES
DEPARTMENT OF THE INTERIOR
GEOLOGICAL SURVEY

APPLICATION FOR PERMIT TO DRILL, DEEPEN, OR PLUG BACK

1a. TYPE OF WORK

DRILL ☒DEEPEN ☐PLUG BACK ☐

b. TYPE OF WELL

OIL
WELL ☐GAS
WELL ☒

OTHER

SINGLE
ZONE ☐MULTIPLE
ZONE ☐

2. NAME OF OPERATOR

Marathon Oil Company

3. ADDRESS OF OPERATOR

P. O. Box 552, Midland, TX 79702

4. LOCATION OF WELL (Report location clearly and in accordance with any State requirements.)*

At surface

1500' FSL & 1100' FWL

At proposed prod. zone

1500' FSL & 1100' FWL

14. DISTANCE IN MILES AND DIRECTION FROM NEAREST TOWN OR POST OFFICE*

12 miles south of Bloomfield, NM

15. DISTANCE FROM PROPOSED*

LOCATION TO NEAREST
PROPERTY OR LEASE LINE, FT.
(Also to nearest drg. unit line, if any)

3780'

16. NO. OF ACRES IN LEASE

2560'

17. NO. OF ACRES ASSIGNED

320

18. DISTANCE FROM PROPOSED LOCATION*
TO NEAREST WELL, DRILLING COMPLETED,
OR APPLIED FOR, ON THIS LEASE, FT.

3413' *

19. PROPOSED DEPTH

2100'

20. ROTARY OR CABLE TOOLS

Rotary

21. ELEVATIONS (Show whether DF, RT, GR, etc.)

6423' -GL

22. APPROX. DATE WORK WILL START*

Dec. 1, 1990

23. PROPOSED CASING AND CEMENTING PROGRAM

SIZE OF HOLE	SIZE OF CASING	WEIGHT PER FOOT	SETTING DEPTH	QUANTITY OF CEMENT
12-1/4"	8-5/8"	24#	350'	325 sx - circ to surface
7-7/8"	5-1/2"	15.5#	2100'	400 sx - circ to surface

Propose to drill to TD of \pm 2100'.

All casing will be run and cemented in accordance with regulations and by approved methods.

Blowout prevention equipment will be applied as outlined in Additional Information.

See attached Multipoint Surface Use Plan and Additional Information for specific drilling operations.

* Distance to proposed well #26-1

RECEIVED
DEC 7 1990OIL CON. DIV.
DIST. 3

IN ABOVE SPACE DESCRIBE PROPOSED PROGRAM. If to deepen or plug back, give data on present productive zone and proposed new productive zone. If proposal is to drill or deepen directional, give pertinent data on subsurface locations and measured and true vertical depths. Give blowout prevention program, if any.

24.

SIGNED

TITLE Drilling Superintendent

DATE 10-2-90

(This space for Federal or State office use)

PERMIT NO.

APPROVAL DATE

APPROVED BY

TITLE

CONDITIONS OF APPROVAL, IF ANY:

NM000

*See Instructions On Reverse Side

Submit to Appropriate
District Office
State Lease - 4 copies
Fee Lease - 3 copies

State of New Mexico
Energy, Minerals and Natural Resources Department

Form C-102
Revised 1-89

OIL CONSERVATION DIVISION

P.O. Box 2088
Santa Fe, New Mexico 87504-2088

DISTRICT I
P.O. Box 1980, Hobbs, NM 88240

DISTRICT II
P.O. Drawer DD, Artesia, NM 88210

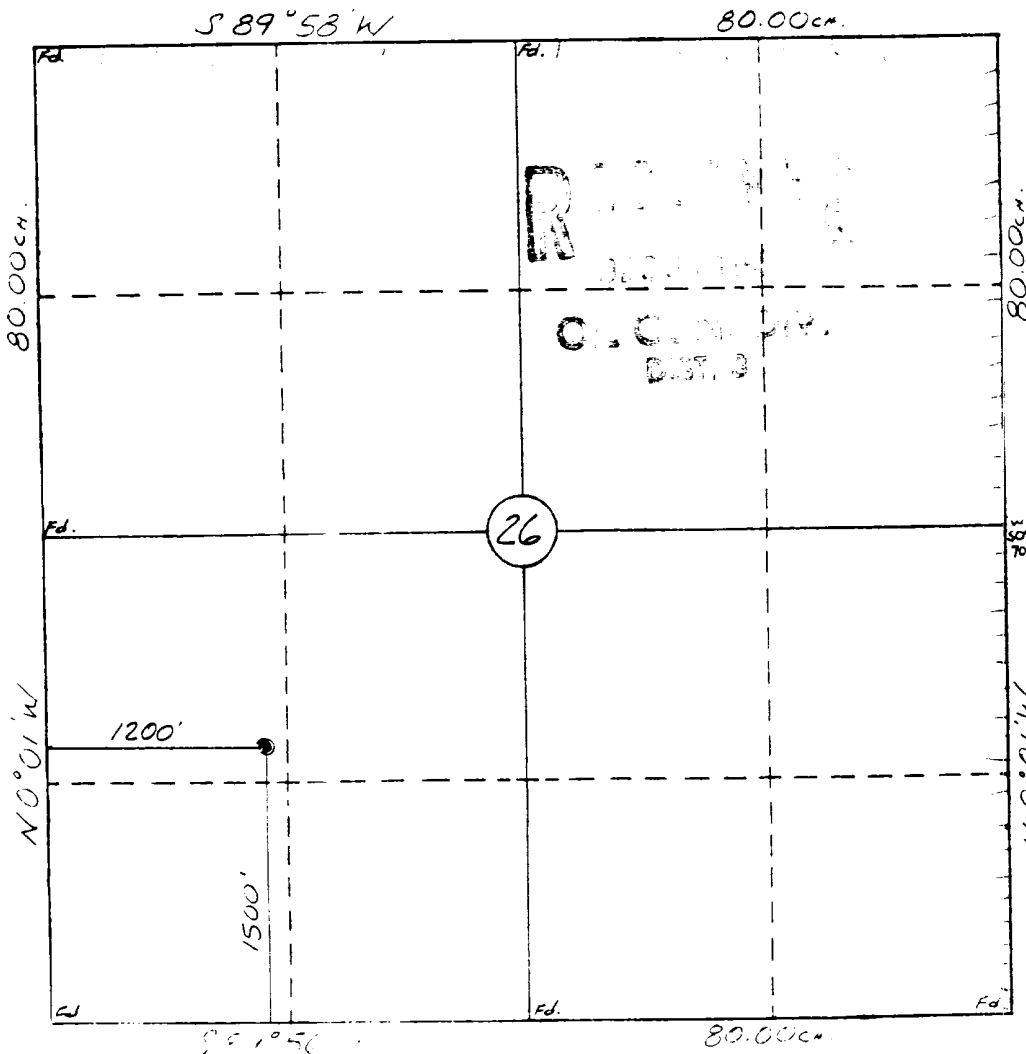
DISTRICT III
1000 Rio Brazos Rd., Aztec, NM 87410

WELL LOCATION AND ACREAGE DEDICATION PLAT

All Distances must be from the outer boundaries of the section

Operator MARATHON OIL COMPANY			Lease DOUTHIT FEDERAL 2			Well No. 262		
Unit Letter L	Section 26	Township 27 N	Range 11 W	County NMPM San Juan				
Actual Footage Location of Well 1500 feet from the South line and 1200 feet from the West line								
Ground level Elev. 6423		Producing Formation Fruitland Coal		Pool Basin Fruitland Coal		Dedicated Acreage 320		Acres
<p>1. Outline the acreage dedicated to the subject well by colored pencil or hatchure marks on the plat below.</p> <p>2. If more than one lease is dedicated to the well, outline each and identify the ownership thereof (both as to working interest and royalty).</p> <p>3. If more than one lease of different ownership is dedicated to the well, have the interest of all owners been consolidated by communitization, unitization, force-pooling, etc.? <input type="checkbox"/> Yes <input type="checkbox"/> No If answer is "yes" type of consolidation _____</p> <p>If answer is "no" list the owners and tract descriptions which have actually been consolidated. (Use reverse side of this form if necessary.) _____</p> <p>No allowable will be assigned to the well until all interests have been consolidated (by communitization, unitization, forced-pooling, or otherwise) or until a non-standard unit, eliminating such interest, has been approved by the Division.</p>								

0 330 660 990 1320 660 1980 2310 2640 2000 1500 000 800 0



OPERATOR CERTIFICATION

I hereby certify that the information contained herein is true and complete to the best of my knowledge and belief.

Signature _____
Printed Name
S. L. Atnipp
Position
Drilling Superintendent
Company
Marathon Oil Company
Date
10-2-90

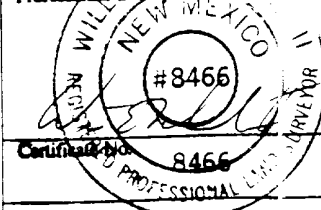
SURVEYOR CERTIFICATION

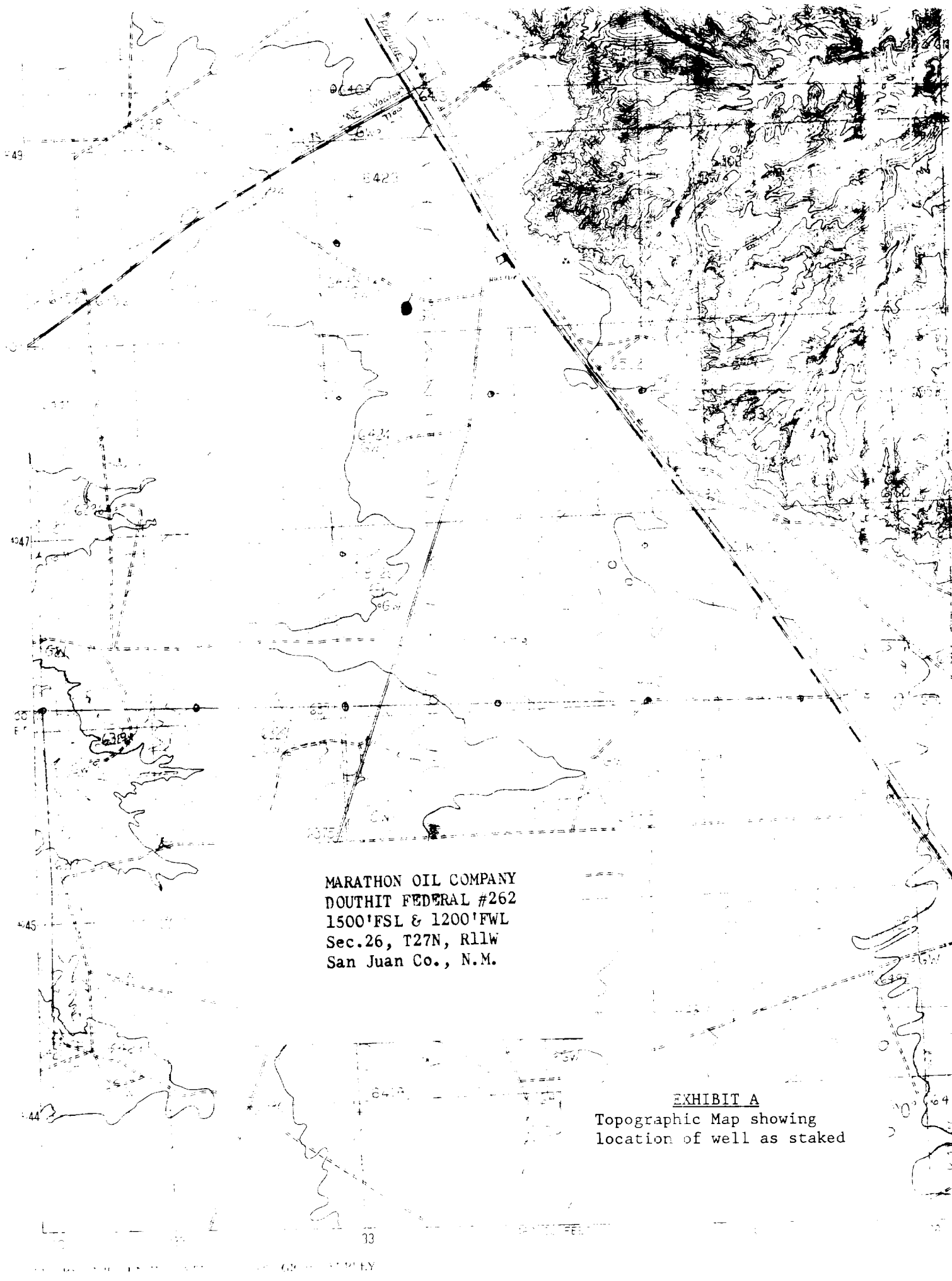
I hereby certify that the well location shown on this plat was plotted from field notes of actual surveys made by me or under my supervision, and that the same is true and correct to the best of my knowledge and belief.

9-18-90

Date Surveyed
William E. Mahnk: II

Signature & Seal of
Professional Surveyor





MARATHON OIL COMPANY
DOUTHIT FEDERAL #262
1500'FSL & 1200'FWL
Sec.26, T27N, R11W
San Juan Co., N.M.

EXHIBIT A
Topographic Map showing
location of well as staked