

UNITED STATES  
DEPARTMENT OF THE INTERIOR  
BUREAU OF LAND MANAGEMENT

SUNDRY NOTICES AND REPORTS ON WELLS

1. TYPE OF WELL GAS		5. LEASE NUMBER SF-078092	
2. OPERATOR MERIDIAN OIL INC.		6. IF INDIAN, ALL. OR TRIBE NAME	
3. ADDRESS & PHONE NO. OF OPERATOR P O BOX 4289 FARMINGTON, NM 87499		7. UNIT AGREEMENT NAME	
4. LOCATION OF WELL 1500' FSL 1200' FWL		8. FARM OR LEASE NAME DOUTHIT FEDERAL	
		9. WELL NO. 262	
		10. FIELD, POOL, OR WILDCAT BASIN FRUITLAND COAL	
		11. SEC. T. R. M OR BLK. SEC. 26 T27N R11W NMPM	
14. PERMIT NO.	15. ELEVATIONS 6423' GL	12. COUNTY SAN JUAN	13. STATE NM

16. SUBSEQUENT REPORT OF: Amended Application for Permit to Drill

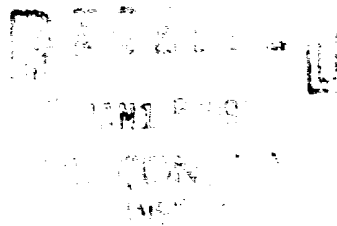
17. Describe proposed or completed operations

Reference is made to Marathon Oil's permit to drill the Douthit Federal #262 submitted 10-02-90 and approved 11-03-90.

Meridian Oil Inc. will operate and drill this well as the Douthit Federal #262 at 1500' FSL and 1200' FWL of Section 26 of Township 27N and Range 11W.

Submitted for review:

- Operations Plan
- BOP Diagrams
- Facilities Diagram



18. AUTHORIZED BY: [Signature]  
REGULATORY AFFAIRS

NOTE: THIS FORMAT IS ISSUED IN LIEU OF US BLM FORM 3160-5.

=====

(This space for Federal or State office use)

APPROVED BY \_\_\_\_\_ TITLE \_\_\_\_\_

CONDITION OF APPROVAL, IF ANY: \_\_\_\_\_

12-7-90

APPROVED

JAN 11 1991

DATE \_\_\_\_\_

AREA MANAGER

FARMINGTON REGION

Well Name: 262 DOUTHIT FEDERAL 1500' FSL 1200' FWL  
 Sec. 26 T27N R11W SAN JUAN NEW MEXICO  
 BASIN FRUITLAND COAL Elevation 6423' GL

Formation tops: Surface- NACIMIENTO

Ojo Alamo- 950

Kirtland- 1063

Fruitland- 1820

Pictured Cliffs- 2012

Total Depth- 2012

Logging Program: Mud logs from 1820 to total depth.

Mud Program:	Interval	Type	Weight	Visc.	Fl. Loss
	0 - 200	Spud	8.4 - 8.9	40-50	no control
	200 - 2012	Non-dispersed	8.4 - 9.5	30-60	no control

Casing Program:	Hole Size	Depth Interval	Csg. Size	Weight	Grade
	12 1/4"	0 - 200	8 5/8"	24.0#	K-55
	7 7/8"	0 - 2012	5 1/2"	15.5#	K-55
Tubing Program:		0 - 2012	2 3/8"	4.7#	J-55

Float Equipment: 8 5/8" surface casing - saw tooth guide shoe. Centralizers will be run in accordance with Onshore Order #2.

5 1/2" production casing - float shoe on bottom. Three centralizers run every other joint above shoe. Two turbolizing type centralizers - one below and one into the base of the Ojo Alamo @ 1063'. Standard centralizers thereafter every fourth joint up to the base of the surface pipe.

Wellhead Equipment: 8 5/8" x 5 1/2" x 2 3/8" x 11" 3000 psi xmas tree assembly

#### Cementing:

8 5/8" surface casing - cement with 211 sacks of class "B" cement with 1/4# flocele/sack and 3% calcium chloride (248 cu ft. of slurry, 200% excess to circulate to surface). WOC 12 hours. Test casing to 600 psi for 30 minutes.

5 1/2" production casing - lead with 304 sacks of 65/35 class "B" poz with 6% gel, 2% calcium chloride and 1/2 cu.ft. Perlite/sack (10.3 gallons of water/sack) tail with 100 sacks of class "B" with 2% calcium chloride. 705 cu ft. of slurry, 100% excess to circulate to surface. If hole conditions permit, a 600 ft spacer will be run ahead of the cement slurry to avoid mud contamination of the cement. WOC 12 hours. If cement does not circulate to surface, a temperature log will be run after 8 hours to determine TOC.

## BOP and Tests:

Surface to TD - 11" 2000 psi(minimum) double gate BOP stack (Reference Figure #1 and #2). Prior to drilling out surface casing, test rams to 600 psi for 30 minutes.

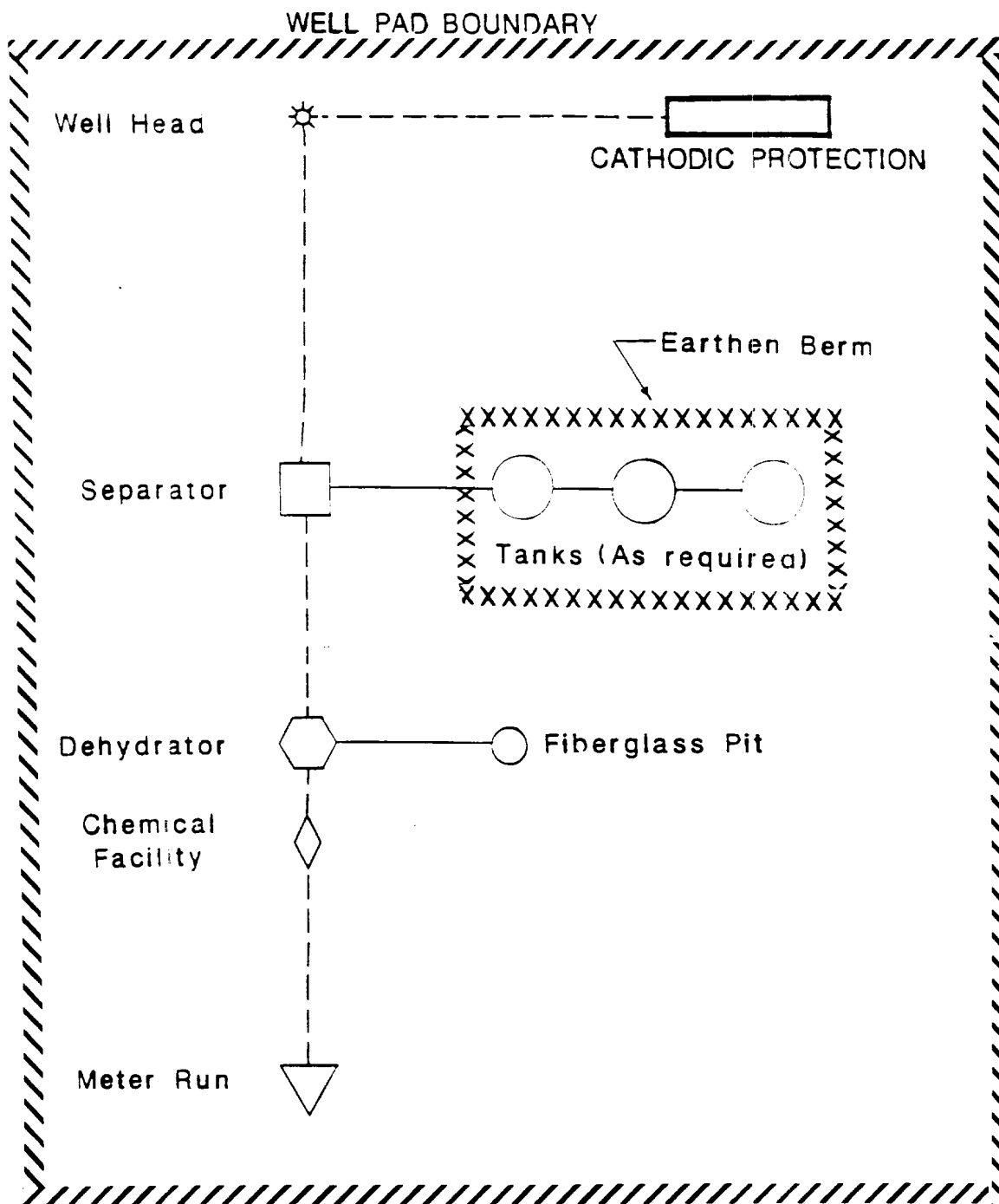
Completion - 6" 2000 psi(minimum) double gate BOP stack (Reference Figure #2. Prior to completion operations, test rams to 3000 psi for 15 minutes.

From surface to TD - choke manifold (Reference Figure #3).

Pipe rams will be actuated at least once each day and blind rams actuated once each trip to test proper functioning. An upper kelly cock valve with handle and drill string safety valves to fit each drill string will be maintained and available on the rig floor.

## Additional Information:

- \* The Fruitland coal formation will be completed.
- \* Anticipated Fruitland pore pressure is 300 psi.
- \* This gas is dedicated.
- \* The W/2 of Section 26 is dedicated to this well.
- \* A new casing will be utilized.
- \* Cementing Contractor will provide the BLM with a chronological log including the pump rate and pressure, and the slurry density and volume for all cement jobs.
- \* Pipe movement (either rotation or reciprocation) will be done if hole conditions permit.

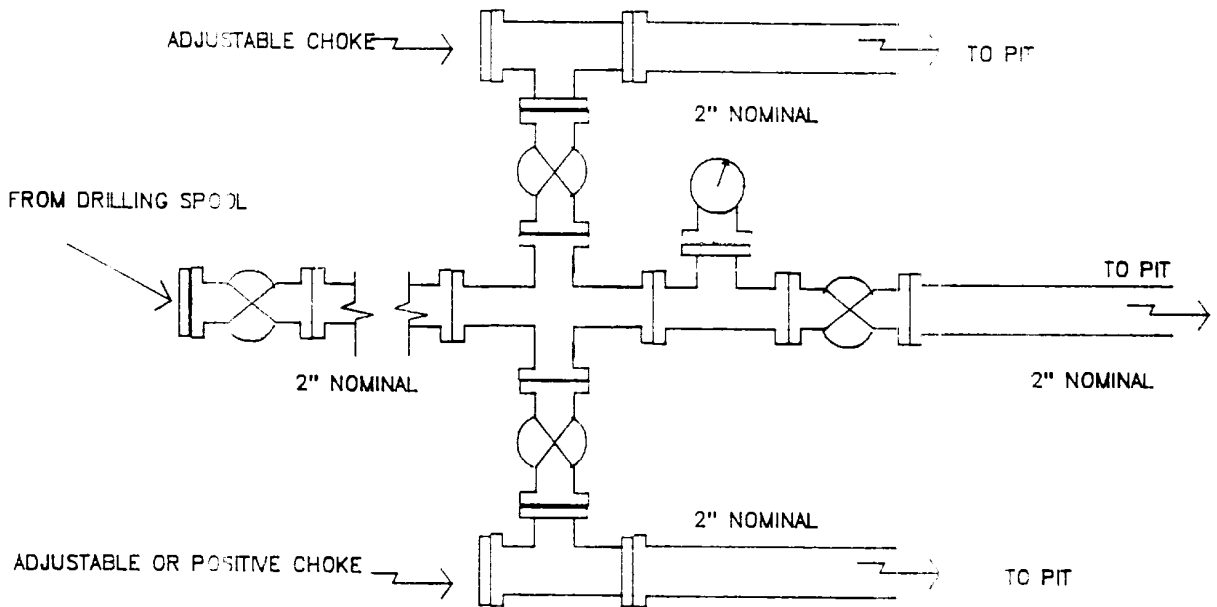


**PLAT #1**

**MERIDIAN OIL**  
ANTICIPATED  
PRODUCTION FACILITIES  
FOR A  
FRUITLAND WELL

KFR 2/90

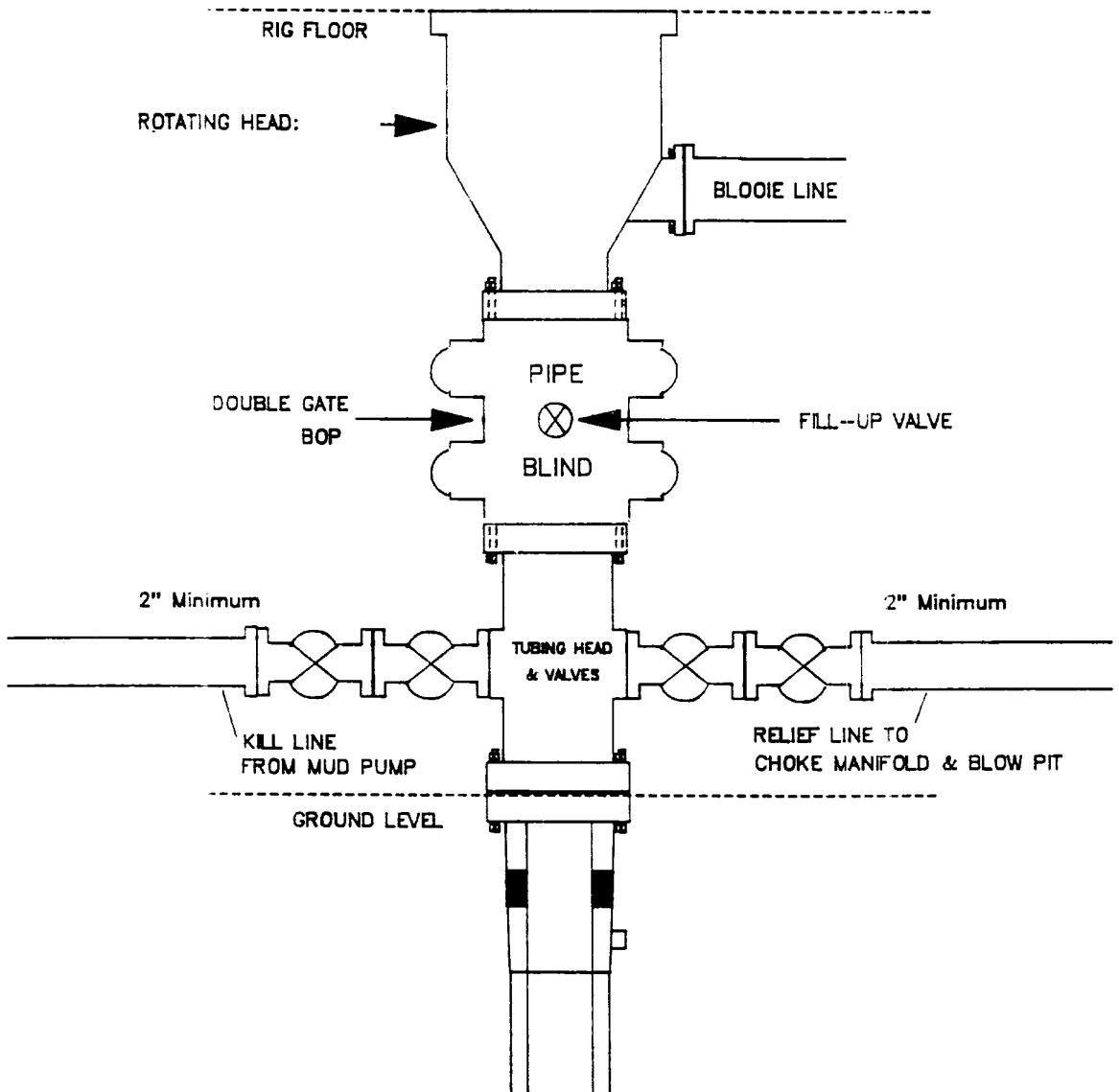
**MERIDIAN OIL INC.**  
Typical Fruitland Coal Well  
Choke Manifold Configuration



Minimum choke manifold installation for a typical Fruitland Coal well from surface to Total Depth. 2", 2000psi working pressure equipment with two chokes.

**Figure #3**

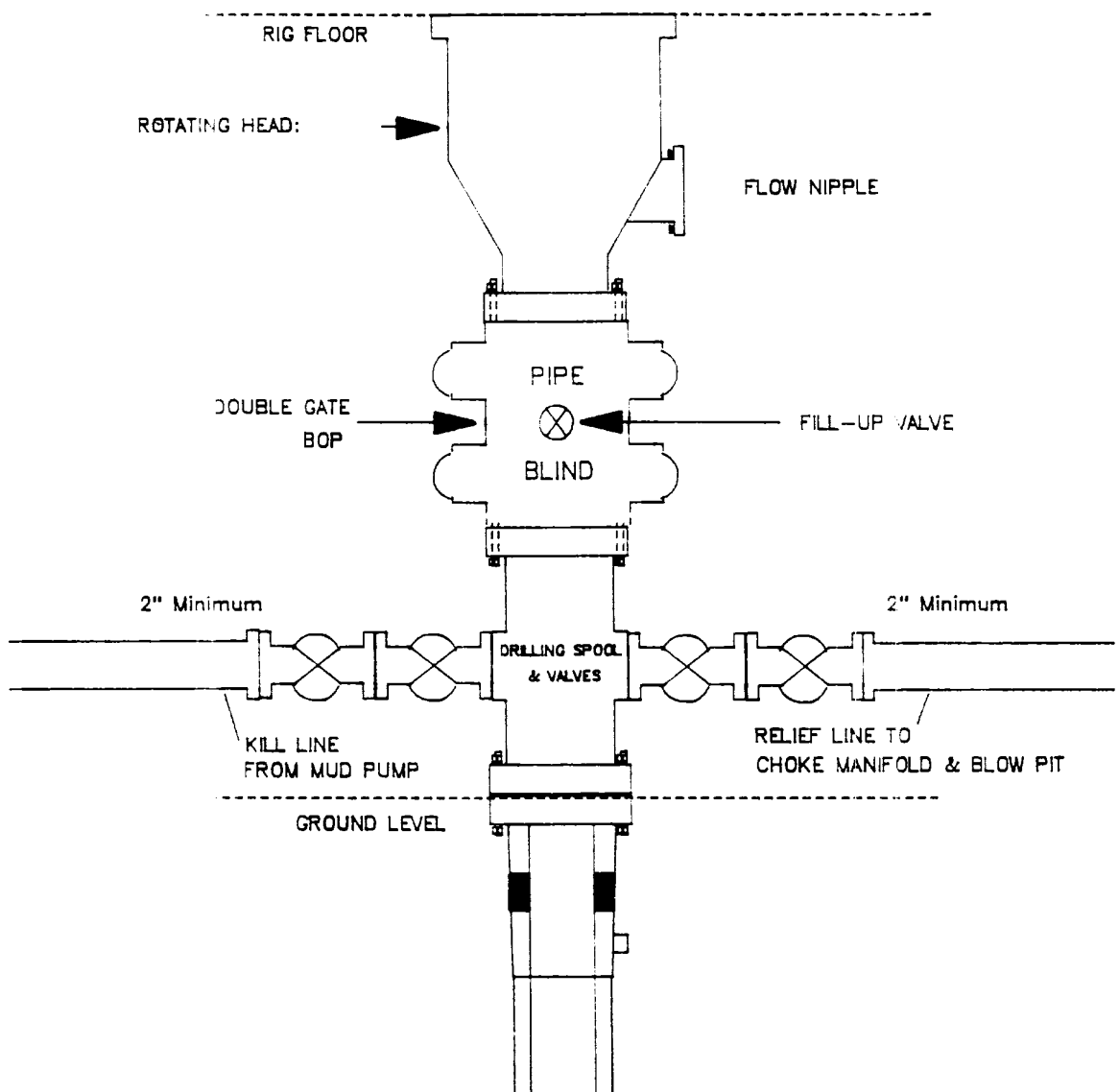
**MERIDIAN OIL INC.**  
Completion Rig  
BOP Configuration



Minimum BOP installation for Completion Operations. 7 1/16" Bore (6" Nominal), 2000psi minimum working pressure double gate BOP to be equipped with blind and pipe rams.

**Figure #2**

**MERIDIAN OIL INC.**  
Drilling Rig  
BOP Configuration



Minimum BOP installation for a typical Fruitland Coal well from surface to Total Depth. 11" Bore (10" Nominal), 2000psi minimum working pressure double gate BOP to be equipped with blind and pipe rams. A Schaffer Type 50 or equivalent rotating head to be installed on the top of BOP. All equipment is 2000psi working pressure/or greater.

**Figure #1**

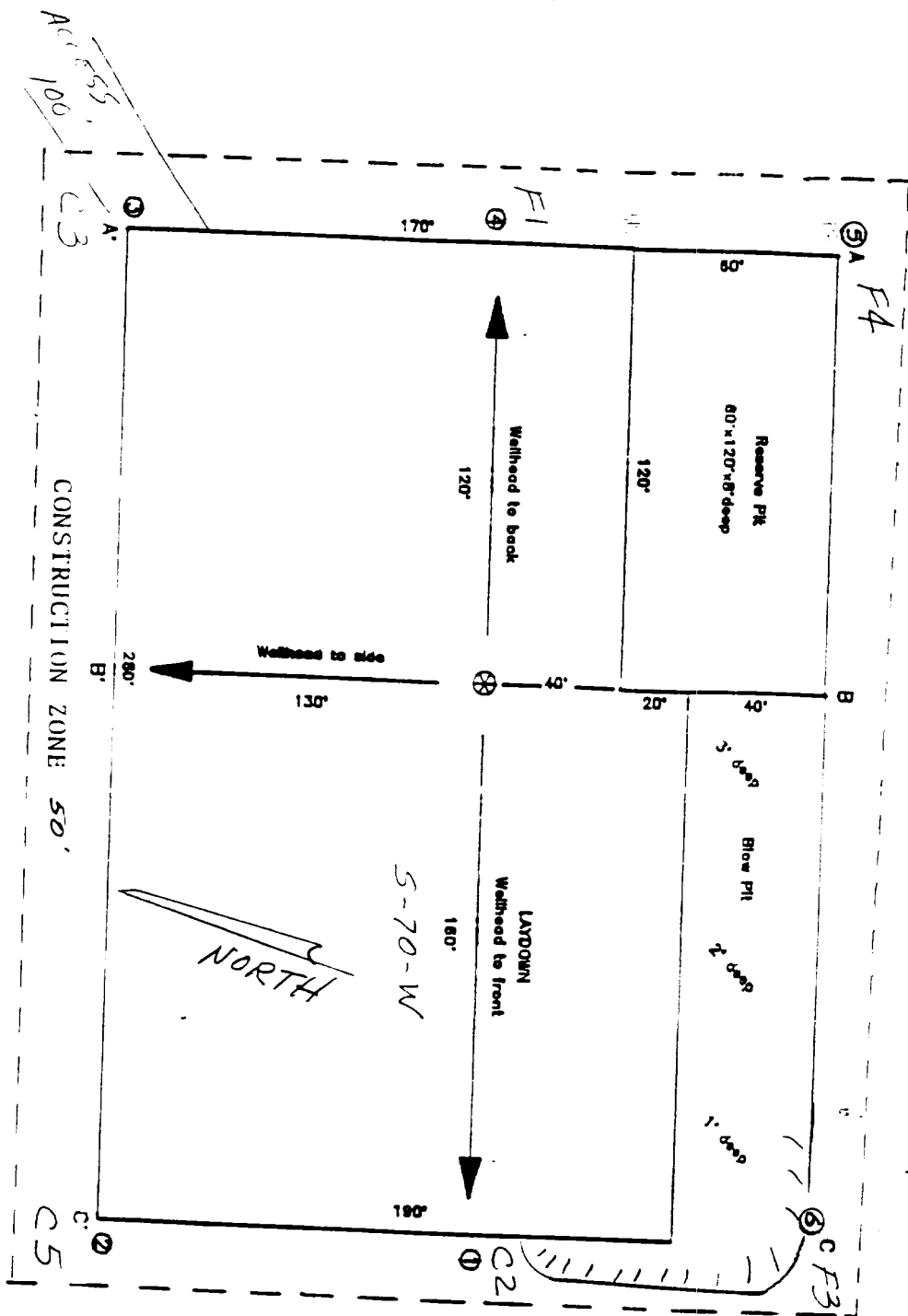


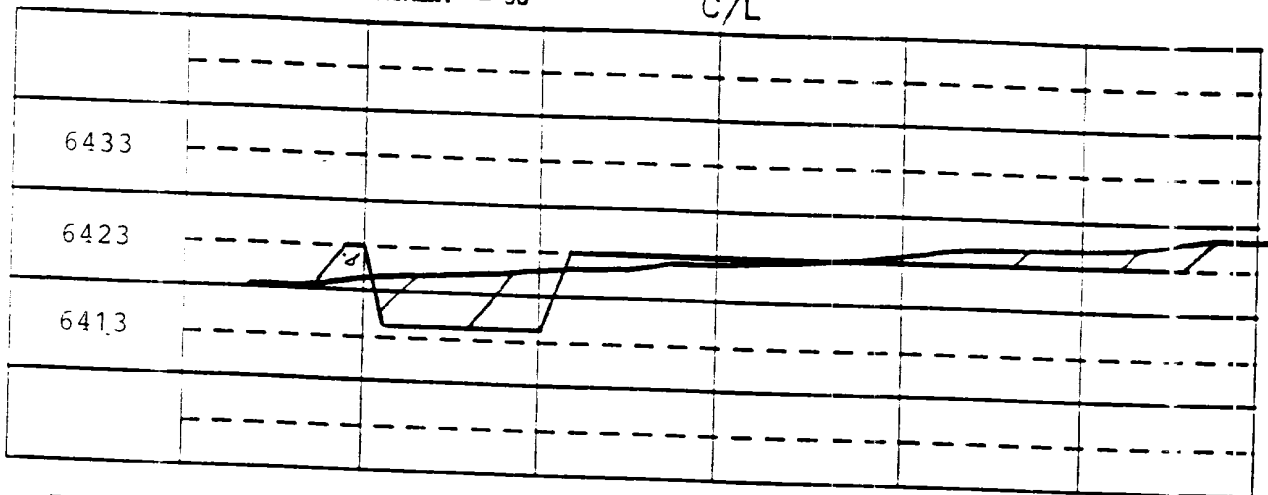
EXHIBIT: _____	
Name: _____	MOI Douthit Federal #262
Footage: _____	1500' FSL, 1200' FWL,
Sec. 26	T- 27 -N, R- 11 -W NMPM
Co. San Juan	St. NM
Elevation: 6423'	Date: 11-29-90

Plat 2  
2/3/90



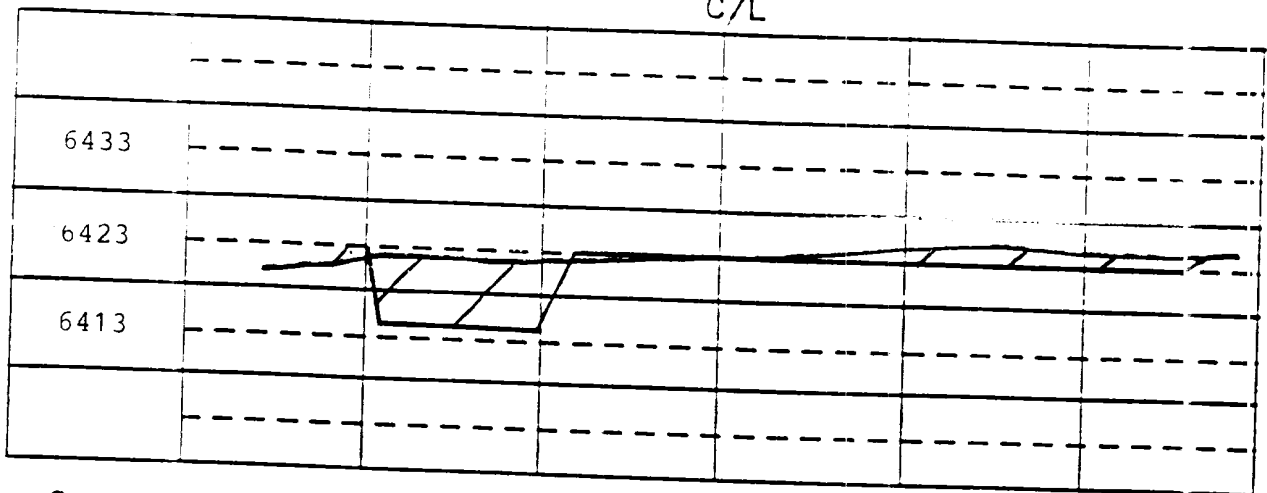
A - A' Vert.:1" = 20' Horiz.:1" = 50'

C/L



B - B'

C/L



C - C'

C/L

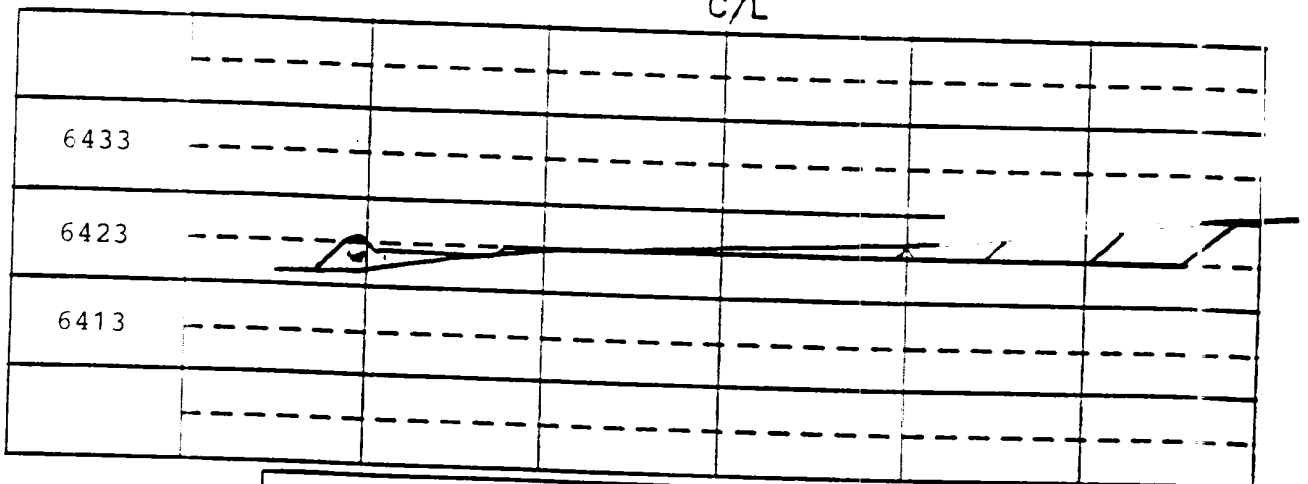


EXHIBIT:

Name: MOI Douthit Federal #262

Footage: 1500' FSL, 1200' FWL,

Sec 26 T- 27 -N,R- 11 -W NMPM

Co. San Juan St. NM

Elevation: 6423' Date: 11-29-90

Plot XC  
2/4/90