

UNITED STATES  
DEPARTMENT OF THE INTERIOR  
BUREAU OF LAND MANAGEMENT

Form approved.  
Budget Bureau No. 1004-0136  
Expires: December 31, 1991

**APPLICATION FOR PERMIT TO DRILL OR DEEPEN**

1a. TYPE OF WORK  
b. TYPE OF WELL  
OIL WELL ☐ GAS WELL ☒ OTHER ☐  
SINGLE ZONE ☒ MULTIPLE ZONE ☐

2. NAME OF OPERATOR  
Amoco Production Company 778 Julie L. Acevedo

3. ADDRESS AND TELEPHONE NO.  
P.O. Box 800, Denver, Colorado 80201 (303) 830-6003

4. LOCATION OF WELL (Report location clearly and in accordance with any State requirements.)  
At surface 790FNL 1120FNL  
At proposed prod. zone

14. DISTANCE IN MILES AND DIRECTION FROM NEAREST TOWN OR POST OFFICE\*  
36 miles from Aztec, N.M.

15. DISTANCE FROM PROPOSED\* LOCATION TO NEAREST PROPERTY OR LEASE LINE, FT. (Also to nearest drlg. unit line, if any)

16. NO. OF ACRES IN LEASE  
2552.22

17. NO. OF ACRES ASSIGNED TO THIS WELL  
W/320

18. DISTANCE FROM PROPOSED LOCATION\* TO NEAREST WELL, DRILLING, COMPLETED, OR APPLIED FOR, ON THIS LEASE, FT.

19. PROPOSED DEPTH  
4660' TD

20. ROTARY OR CABLE TOOLS  
Rotary

21. ELEVATIONS (Show whether DF, RT, GR., etc.)  
6106' GL

22. APPROX. DATE WORK WILL START\*  
06-01-95

23. **PROPOSED CASING AND CEMENTING PROGRAM**

SIZE OF HOLE	GRADE, SIZE OF CASING	WEIGHT PER FOOT	SETTING DEPTH	QUANTITY OF CEMENT
12.25"	8.625"	24# J-55	50'	36cu.ft. CI B Circ. to surface
7.88"	5.5"	14# J-55	2386'	662cu.ft. CI B Circ. to surface
4.75"	2.875"	6.5# N-80	4660'	240cu.ft. CI B

Notice of staking submitted: 4/11/95 as the Bolack C L S 11A.

LEASE DESCRIPTION:

T-27-N R--8-W

SEC 28: LOTS 1(37.78), 2(38.01), 3(38.33), 4(38.10), NW/4, S/2

SEC 29: ALL

SEC 30: E/2

SEC 31: E/2

SEC 33: ALL

DRILLING OPERATIONS ARE  
SUBJECT TO CONDITIONS ATTACHED  
"GENERAL REQUIREMENTS"

RECEIVED  
MAY 17 1995  
OIL CON. DIV.  
DIST. 3

IN ABOVE SPACE DESCRIBE PROPOSED PROGRAM: If proposal is to deepen, give data on present productive zone and proposed new productive zone. If proposal is to drill or deepen directionally, give pertinent data on subsurface locations and measured and true vertical depths. Give blowout preventer program, if any.

24.

SIGNED

*Julie L. Acevedo*

TITLE Sr. Staff Assistant

DATE

04-14-1995

(This space for Federal or State office use)

PERMIT NO.

APPROVAL DATE

Application approval does not warrant or certify that the applicant holds legal or equitable title to those rights in the subject lease which would entitle the applicant to conduct operations thereon.

CONDITIONS OF APPROVAL, IF ANY:

APPROVED BY

TITLE

AMOCO

APPROVED  
AS AMENDED

DATE

MAY 15 1995

\*See Instructions On Reverse Side

Title 18 U.S.C. Section 1001, makes it a crime for any person knowingly and willfully to make to any department or agency of the United States, fictitious or fraudulent statements or representations as to any matter within its jurisdiction.

DISTRICT MANAGER

District I  
PO Box 1980, Hobbs, NM 88241-1980  
District II  
PO Drawer DD, Artesia, NM 88211-0719  
District III  
1000 Rio Brazos Rd., Aztec, NM 87410  
District IV  
PO Box 2088, Santa Fe, NM 87504-2088

State of New Mexico  
Energy, Minerals & Natural Resources Department

OIL CONSERVATION DIVISION  
PO Box 2088  
Santa Fe, NM 87504-2088

Form C-102  
Revised February 21, 1994  
Instructions on back  
Submit to Appropriate District Office  
State Lease - 4 Copies  
Fee Lease - 3 Copies

☐ AMENDED REPORT

WELL LOCATION AND ACREAGE DEDICATION PLAT

1 API Number 30-045-29249		1 Pool Code 72319		1 Pool Name Blanco Mesaverde	
1 Property Code 327		1 Property Name BOLACK CLS			1 Well Number # 11A
1 OGRID No. 00778		1 Operator Name AMOCO PRODUCTION COMPANY			1 Elevation 6106

10 Surface Location

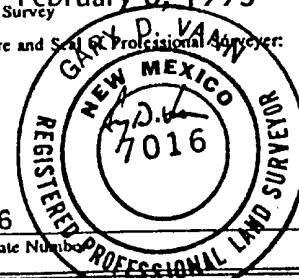
UL or lot no.	Section	Township	Range	Lot Idn	Feet from the	North/South line	Feet from the	East/West line	County
D	28	27 N	8 W		790	NORTH	1120	WEST	SAN JUAN

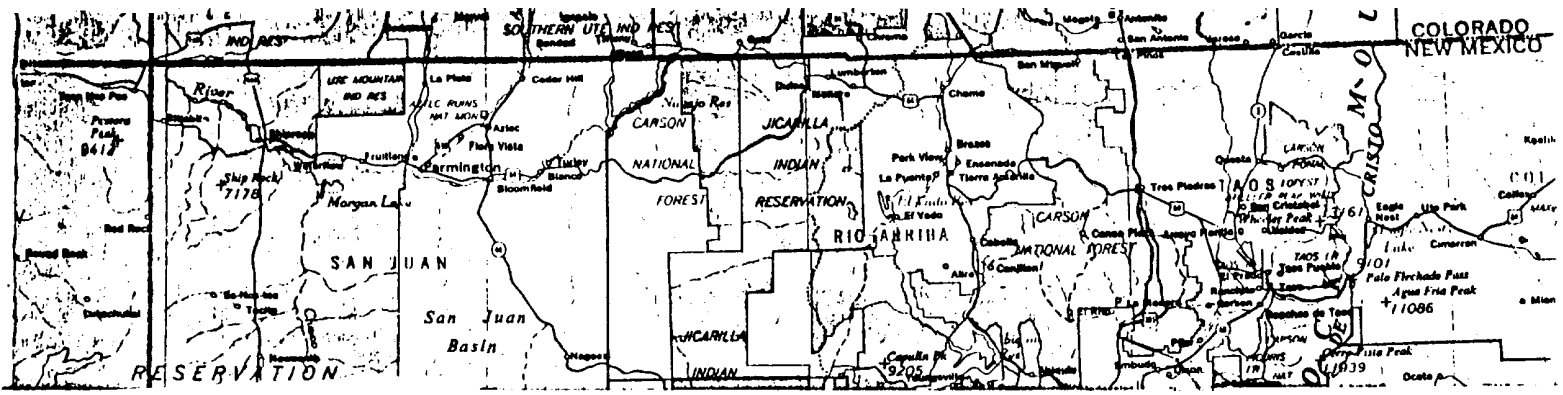
11 Bottom Hole Location If Different From Surface

UL or lot no.	Section	Township	Range	Lot Idn	Feet from the	North/South line	Feet from the	East/West line	County

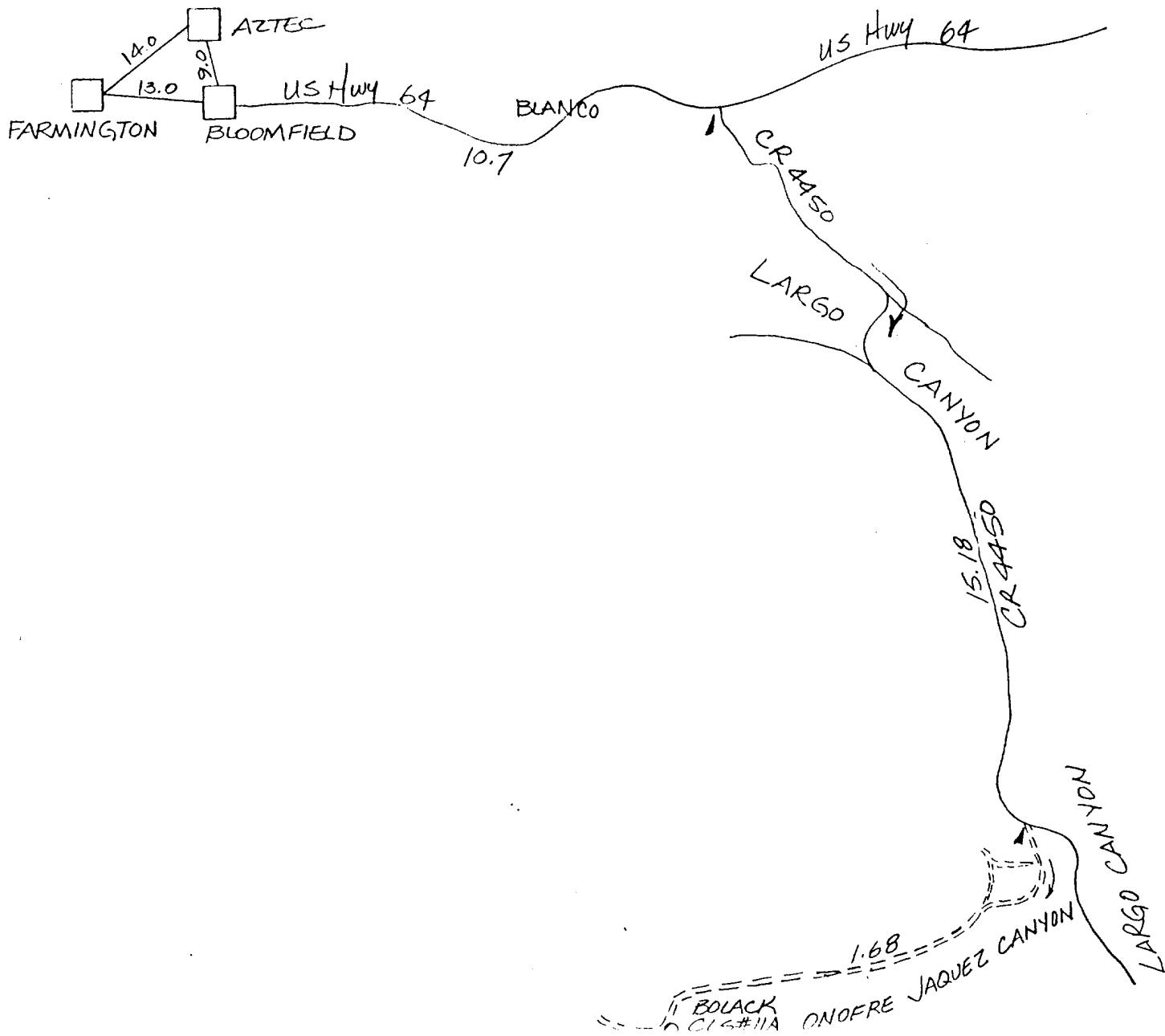
12 Dedicated Acres 320	13 Joint or Infill	14 Consolidation Code	15 Order No.
---------------------------	--------------------	-----------------------	--------------

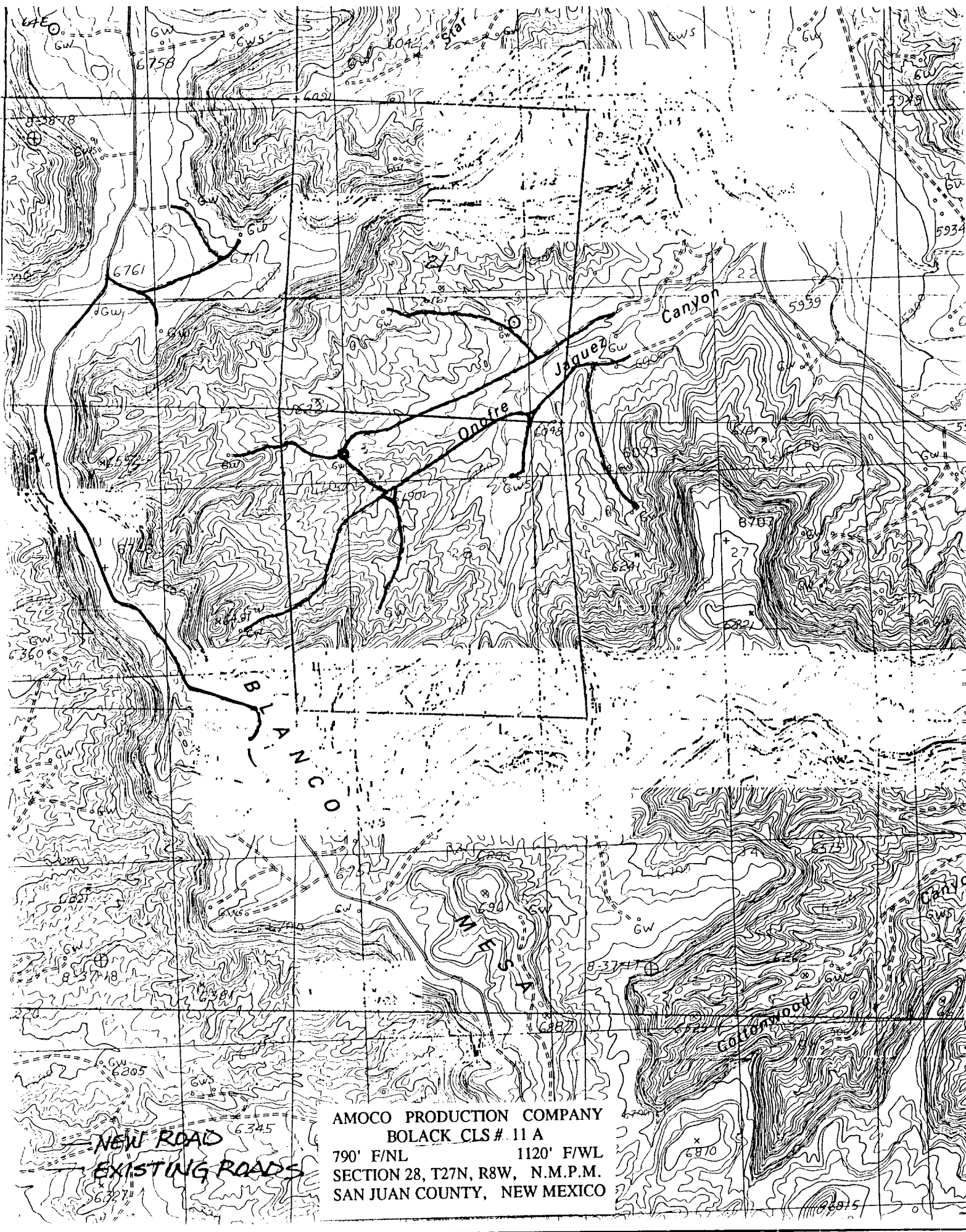
NO ALLOWABLE WILL BE ASSIGNED TO THIS COMPLETION UNTIL ALL INTERESTS HAVE BEEN CONSOLIDATED  
OR A NON-STANDARD UNIT HAS BEEN APPROVED BY THE DIVISION

BUN RECORD 13 35.35' 1120' 1335.34'	16 1249.87' 1249.88'			28
<b>RECEIVED</b> MAY 17 1995 <b>OIL CON. DIV.</b> DIST. 3				
				17 OPERATOR CERTIFICATION I hereby certify that the information contained herein is true and complete to the best of my knowledge and belief  Signature Julie L. Acevedo Printed Name Julie L. Acevedo Title Sr. Staff Assistant Date 4/11/95
				18 SURVEYOR CERTIFICATION I hereby certify that the well location shown on this plat was plotted from field notes of actual surveys made by me or under my supervision, and that the same is true and correct to the best of my belief.  Date of Survey February 8, 1995 Signature and Seal of Professional Surveyor:  7016 Certificate Number



BOLACK CLS # 11 A  
 790' F/NL 1120' F/WL  
 SECTION 28, T27N, R8W, N.M.P.M.  
 RAIL POINT: 179 miles from Montrose, Co.  
 MUD POINT: 36 miles from Aztec, N.M.  
 CEMENT POINT: 40 miles from Farmington, N.M.





AMOCO PRODUCTION COMPANY  
BOLACK CLS # 11 A  
790' F/NL 1120' F/WL  
SECTION 28, T27N, R8W, N.M.P.M.  
SAN JUAN COUNTY, NEW MEXICO