

UNITED STATES  
DEPARTMENT OF THE INTERIOR  
BUREAU OF LAND MANAGEMENT

APPLICATION FOR PERMIT TO DRILL, DEEPEN, OR PLUG BACK

1a. Type of Work DRILL	<b>RECEIVED</b> APR - 9 1997 <b>OIL &amp; GAS DIST. 3</b>	5. Lease Number SF-046563 Unit Reporting Number
1b. Type of Well GAS		6. If Indian, All. or Tribe
2. Operator <b>BURLINGTON RESOURCES</b> 14538 Oil & Gas Company		7. Unit Agreement Name
3. Address & Phone No. of Operator PO Box 4289, Farmington, NM 87499  (505) 326-9700		8. Farm or Lease Name 6997 Feasel 9. Well Number 1R
4. Location of Well 1160' FSL, 1180' FWL  Latitude 36° 36' 02", Longitude 107° 52' 12"		10. Field, Pool, Wildcat 77200 Fulcher Kutz Pic. Cliffs 11. Sec., Twn, Rge, Mer. (NMPM) m Sec 2, T-27-N, R-10-W API # 30-045- 27447
14. Distance in Miles from Nearest Town 9 miles to Bloomfield	12. County San Juan	13. State NM
15. Distance from Proposed Location to Nearest Property or Lease Line 1160'		
16. Acres in Lease	17. Acres Assigned to Well 160 SW/4	
18. Distance from Proposed Location to Nearest Well, Drig, Compl, or Applied for on this Lease 200'		
19. Proposed Depth 2300'	20. Rotary or Cable Tools Rotary	
21. Elevations (DF, FT, GR, Etc.) 6150'	22. Approx. Date Work will Start	
23. Proposed Casing and Cementing Program See Operations Plan attached	DRILLING OPERATIONS AUTHORIZED ARE SUBJECT TO COMPLIANCE WITH ATTACHED "GENERAL REQUIREMENTS"	
24. Authorized by: <u>[Signature]</u> Regulatory/Compliance Administrator	2/17/97 Date	

PERMIT NO. \_\_\_\_\_ APPROVAL DATE \_\_\_\_\_  
APPROVED BY /S/ Duane W. Spencer TITLE \_\_\_\_\_ DATE APR 07 1997

Archaeological Report to be submitted  
Threatened and Endangered Species Report to be submitted  
NOTE: This format is issued in lieu of U.S. BLM Form 3160-3

[Handwritten mark]

AMOCO

District I  
PO Box 1980, Hobbs, NM 88241-1980  
District II  
PO Drawer DD, Artesia, NM 88211-0719  
District III  
1000 Rio Brazos Rd., Aztec, NM 87410  
District IV  
PO Box 2088, Santa Fe, NM 87504-2088

State of New Mexico  
Energy, Minerals & Natural Resources Department

OIL CONSERVATION DIVISION  
PO Box 2088  
Santa Fe, NM 87504-2088

Form C-102  
Revised February 21, 1994  
Instructions on back  
Submit to Appropriate District Office  
State Lease - 4 Copies  
Fee Lease - 3 Copies

☐ AMENDED REPORT

WELL LOCATION AND ACREAGE DEDICATION PLAT

API Number 30-045-29447	Pool Code 77200	Pool Name Fulcher Kutx Pictured Cliffs
Property Code 6997	Property Name Feasel	Well Number 1R
OGRID No. 14538	Operator Name BURLINGTON RESOURCES OIL & GAS COMPANY	Elevation 6150'

10 Surface Location

UL or lot no. M	Section 2	Township 27-N	Range 10-W	Lot Idn	Feet from the 1160	North/South line South	Feet from the 1180	East/West line West	County S.J.
--------------------	--------------	------------------	---------------	---------	-----------------------	---------------------------	-----------------------	------------------------	----------------

11 Bottom Hole Location If Different From Surface

UL or lot no.	Section	Township	Range	Lot Idn	Feet from the	North/South line	Feet from the	East/West line	County
Dedicated Acres 160		Joint or Infill		Consolidation Code		Order No.			

NO ALLOWABLE WILL BE ASSIGNED TO THIS COMPLETION UNTIL ALL INTERESTS HAVE BEEN CONSOLIDATED  
OR A NON-STANDARD UNIT HAS BEEN APPROVED BY THE DIVISION

16	4	3	2	1	17 OPERATOR CERTIFICATION I hereby certify that the information contained herein is true and complete to the best of my knowledge and belief  Signature Peggy Bradfield Printed Name Regulatory Administrator Title 2-17-97 Date
5303.76'	RECEIVED APR - 9 1997 OIL CON. DIV. DIST. 3				5299.80'
SF-046563					
1180'	5274.06'				
1160'	18 SURVEYOR CERTIFICATION I hereby certify that the well location shown on this plat was plotted from field notes of actual surveys made by me or under my supervision, and that the same is true and correct to the best of my belief. 2/04/97 Date of Survey Signature and Seal of Professional Surveyor NEALE C. EDWARDS NEW MEXICO 6857 6857 Certificate Number				

OPERATIONS PLAN

**Well Name:** Feasel #1R  
**Location:** 1160' FSL, 1180' FWL Section 2, T-27-N, R-10-W  
 San Juan County, New Mexico  
 Latitude 36° 36' 02", Longitude 107° 52' 12"  
**Formation:** Fulcher Kutz Pictured Cliffs  
**Elevation:** 6150' GL

Formation:	Top	Bottom	Contents
Surface	Nacimiento	1120'	
Ojo Alamo	1120'	1246'	aquifer
Kirtland	1246'	1846'	
Fruitland	1846'	2073'	gas
Fruitland Coal	1935'	2070'	gas
Pictured Cliffs	2073'		gas
Total Depth	2300'		

**Logging Program:** Mud log 1850-to TD  
 Hi Res Ind, Den/Neut, MRL/GR to Total Depth.

**Coring Program:** three (3) 30' cores 2073-2163' in Pictured Cliffs

**Mud Program:**

Interval	Type	Weight	Vis.	Fluid Loss
0- 120'	Spud	8.4-9.0	40-50	no control
120-2300'	LSND	8.4-9.0	40-60	no control

**Casing Program (as listed, equivalent, or better):**

Hole Size	Depth Interval	Csg. Size	Wt.	Grade
12 1/4"	0 - 120'	8 5/8"	23.0#	M-50
6 1/4"	0 - 2300'	3 1/2"	7.7#	WC-70

**Tubing Program:** - none

**Float Equipment:** 8 5/8" surface casing - saw tooth guide shoe.  
 Centralizers will be run in accordance with Onshore Order #2.

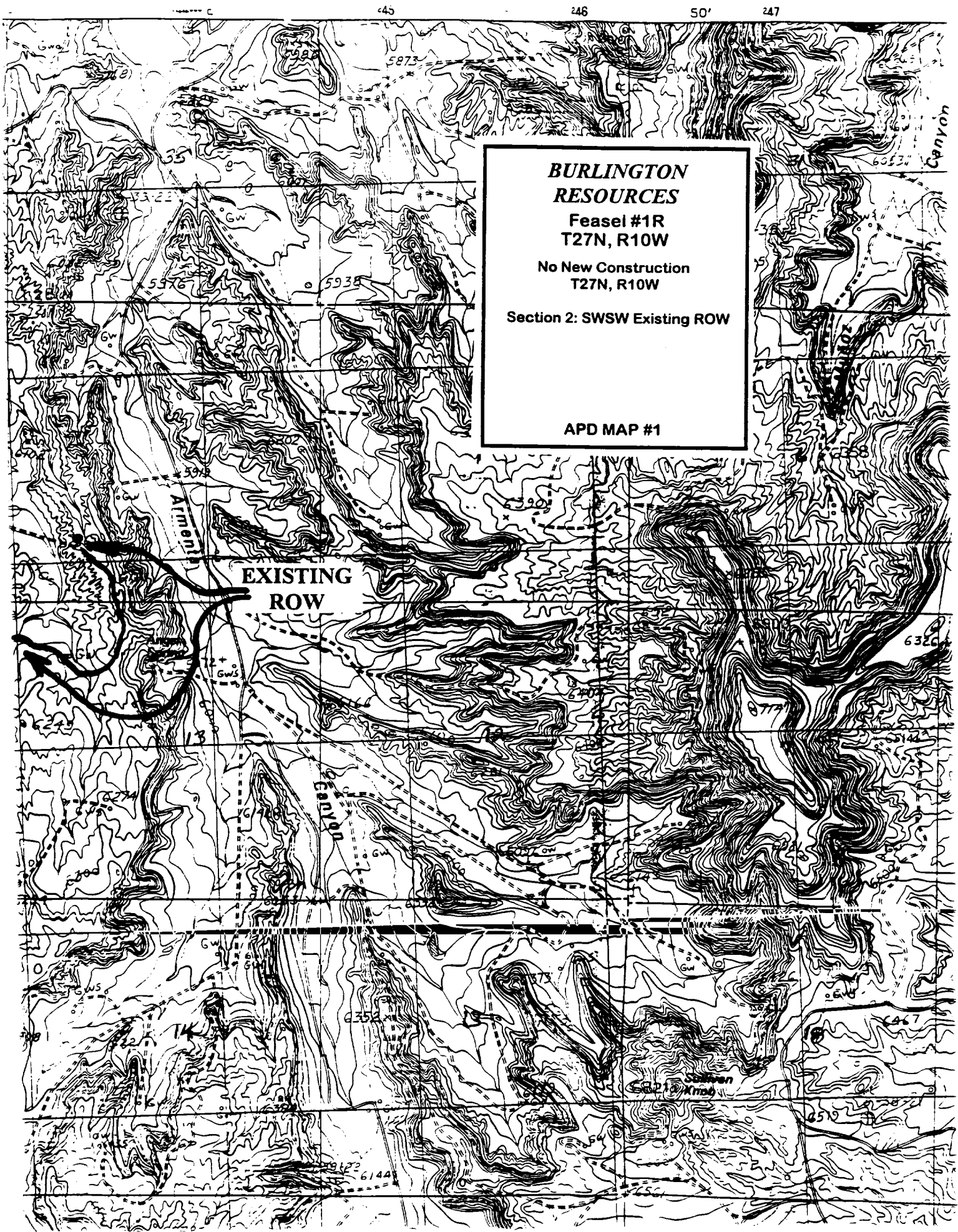
3 1/2" production casing - float shoe on bottom. Three centralizers run every other joint above shoe. Four centralizers run every 3rd joint to the base of the Ojo Alamo @ 1246'. Two turbolizing type centralizers - one below and one into the base of the Ojo Alamo @ 1246'. Standard centralizers thereafter every fourth joint up to the base of the surface pipe.

**Wellhead Equipment:** 8 5/8" x 3 1/2" x 11" 2000 psi screw on independent wellhead.

**Cementing:**

8 5/8" surface casing - cement with 129 sx Class "B" cement with 1/4# flocele/sx and 3% calcium chloride (149 cu.ft. of slurry, 200% excess to circulate to surface). WOC 12 hrs. Test casing to 600 psi for 30 minutes.

3 1/2" production casing - Lead w/266 sx of 65/35 Class "B" Poz w/6% gel, 2% calcium chloride, and 1/4# flocele/sx. Tail w/100 sx Class "B" w/2% calcium chloride (589 cu.ft. of slurry, 75% excess to circulate to



**BURLINGTON  
RESOURCES**  
Feasel #1R  
T27N, R10W  
No New Construction  
T27N, R10W  
Section 2: SWSW Existing ROW  
  
APD MAP #1

**EXISTING  
ROW**