

UNITED STATES
DEPARTMENT OF THE INTERIOR
BUREAU OF LAND MANAGEMENTSUBMIT IN TRIPLICATE*
(Other instructions on
reverse side)FORM APPROVED
OMB NO. 1004-0136
Expires: February 28, 1995

APPLICATION FOR PERMIT TO DRILL OR DEEPEN

1a. TYPE OF WORK

DRILL ☒DEEPEN ☐

b. TYPE OF WELL

OIL
WELL ☐GAS
WELL ☒OTHER ☐SINGLE
ZONE ☒MULTIPLE
ZONE ☐

2. NAME OF OPERATOR

Cross Timbers Operating Company

3. ADDRESS AND TELEPHONE NO.

2700 Farmington Ave., Bldg. K. Ste 1 Farmington, NM 87401

4. LOCATION OF WELL (Report location clearly and in accordance with any State requirements.)

At surface

665' FSL & 1,540' FEL Sec 21, T27N, R08W

At proposed prod. zone

Same

14. DISTANCE IN MILES AND DIRECTION FROM NEAREST TOWN OR POST OFFICE*

Approx 24 miles south down Largo Canyon from the Blanco NM Post Office

15. DISTANCE FROM PROPOSED*

LOCATION TO NEAREST

PROPERTY OR LEASE LINE, FT.

(Also to nearest drlg. unit line, if any) 665'

16. NO. OF ACRES IN LEASE

320

17. NO. OF ACRES ASSIGNED
TO THIS WELL

320

18. DISTANCE FROM PROPOSED LOCATION*

TO NEAREST WELL, DRILLING, COMPLETED,

OR APPLIED FOR, ON THIS LEASE, FT. 650'

19. PROPOSED DEPTH

4,875'

20. ROTARY OR CABLE TOOLS

0'-4,875' w/Rotary Tools

21. ELEVATIONS (Show whether DF, RT, GR, etc.)

6,048' GL

22. APPROX. DATE WORK WILL START*

Oct, 2001

23.

PROPOSED CASING AND CEMENTING PROGRAM

SIZE OF HOLE	GRADE, SIZE OF CASING	WEIGHT PER FOOT	SETTING DEPTH	QUANTITY OF CEMENT
12-1/4"	8-5/8", J-55	24#	365'	260 sx c1 "B"
7-7/8"	4-1/2", J-55	10.5#	4,875'	Lead: 275 sx c1 "B" w/2% Extender Tail: 460 sx c1 "B" w/2% Extender

Cross Timbers plans to drill the above mentioned well as described in the enclosed Surface Use Program.

procedural review pursuant to 43 CFR 3165.3
and appeal pursuant to 43 CFR 3165.4.NOV 2001
RECEIVED
OIL CON DIV
DIST. 3

IN ABOVE SPACE DESCRIBE PROPOSED PROGRAM: If proposal is to deepen, give data on present productive zone and proposed new productive zone. If proposal is to drill or deepen directionally, give pertinent data on subsurface locations and measured and true vertical depths. Give blowout prevention program, if any.

24.

SIGNED

TITLE

Drilling Engineer

DATE

8/31/01

(This space for Federal or State office use)

PERMIT NO.

APPROVAL DATE

Application approval does not warrant or certify that the applicant holds legal or equitable title to those rights in the subject lease which would entitle the applicant to conduct operations thereon.

CONDITIONS OF APPROVAL, IF ANY:

APPROVED BY

TITLE

See Instructions On Reverse Side

DATE

Title 18 U.S.C. Section 1001, makes it a crime for any person knowingly and willfully to make to any department or agency of the United States any false, fictitious or fraudulent statements or representations as to any matter within its jurisdiction.

NMCCD

DISTRICT I
1625 N. French Dr., Hobbs, N.M. 88240

DISTRICT II
811 South First, Artesia, N.M. 88210

DISTRICT III
1000 Rio Brazos Rd., Aztec, N.M. 87410

DISTRICT IV
2040 South Pacheco, Santa Fe, NM 87505

State of New Mexico
Energy, Minerals & Natural Resources Department

Form C-102
Revised August 15, 2000

Submit to Appropriate District Office
State Lease - 4 Copies
Fee Lease - 3 Copies

OIL CONSERVATION DIVISION

2040 South Pacheco
Santa Fe, NM 87505

☐ AMENDED REPORT

WELL LOCATION AND ACREAGE DEDICATION PLAT

¹ API Number 30-045-30819	² Pool Code 72319	³ Pool Name BLANCO MESAUERDE
⁴ Property Code 29105	⁵ Property Name FLORANCE "D"	⁶ Well Number 14B
⁷ GRID No. 167067	⁸ Operator Name CROSS TIMBERS OPERATING CO.	⁹ Elevation 6048'

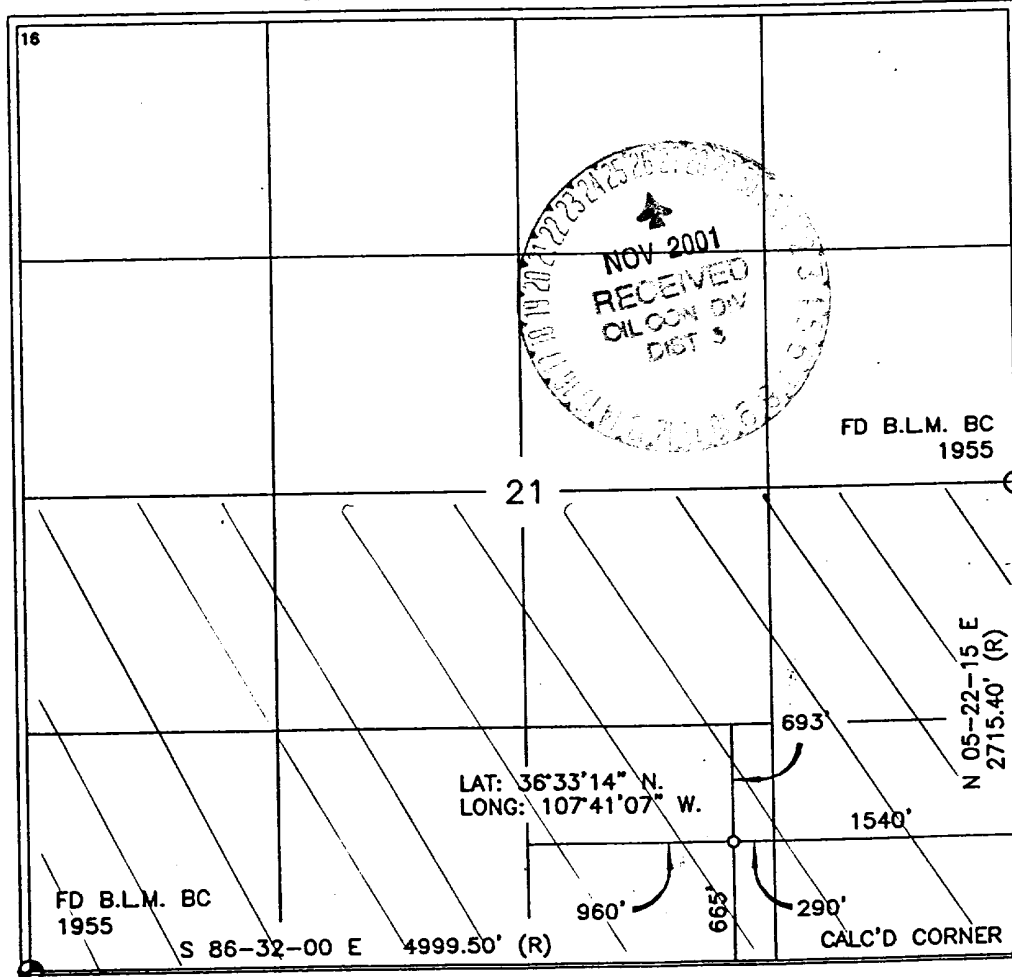
¹⁰ Surface Location

UL or lot no.	Section	Township	Range	Lot Idn	Feet from the	North/South line	Feet from the	East/West line	County
0	21	27-N	8-W		665'	SOUTH	1540'	EAST	SAN JUAN

¹¹ Bottom Hole Location If Different From Surface

UL or lot no.	Section	Township	Range	Lot Idn	Feet from the	North/South line	Feet from the	East/West line	County
¹² Dedicated Acres 320	5/2				¹³ Joint or Infill I	¹⁴ Consolidation Code	¹⁵ Order No.		

NO ALLOWABLE WILL BE ASSIGNED TO THIS COMPLETION UNTIL ALL INTERESTS HAVE BEEN CONSOLIDATED
OR A NON-STANDARD UNIT HAS BEEN APPROVED BY THE DIVISION



17 17 OPERATOR CERTIFICATION

I hereby certify that the information contained herein is true and complete to the best of my knowledge and belief

Signature Jeffrey W. Patton
Printed Name **JEFFREY W. PATTON**
Title **DRILLING ENGINEER**
Date **8-31-01**

18 SURVEYOR CERTIFICATION

I hereby certify that the well location shown on this plat was plotted from field notes of actual surveys made by me or under my supervision, and that the same is true and correct to the best of my belief.

Date of Survey **8-31-01**
Signature and Seal of Professional Surveyor
Certificate Number **8894**

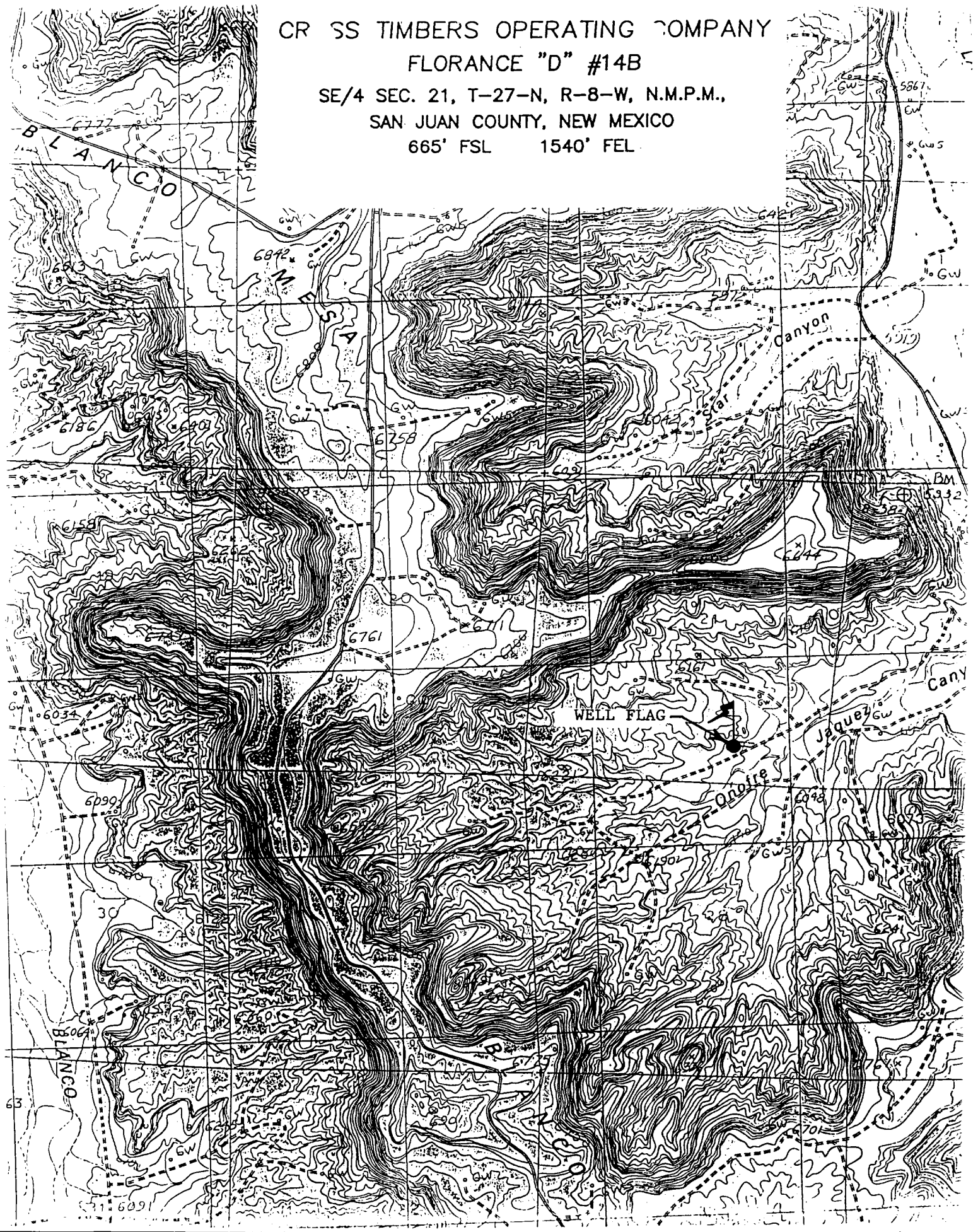
CR SS TIMBERS OPERATING COMPANY

FLORANCE "D" #14B

SE/4 SEC. 21, T-27-N, R-8-W, N.M.P.M.,

SAN JUAN COUNTY, NEW MEXICO

665' FSL 1540' FEL



XTO Energy Inc.

Florance "D" #14B

APD Data

August 31, 2001

Location: 665' FSL & 1,540' FEL, Sec 21, T27N, R08W

County: San Juan State: New Mexico

PROJECTED TOTAL DEPTH: ±4,875'

GR ELEV: 6,048'

OBJECTIVE: Mesaverde

Est KB ELEV: 6,060 (12' AGL)

1. MUD PROGRAM:

INTERVAL	0' to 370'	370' to 3,500'	3,500' to TD
HOLE SIZE	12-1/4"	7-7/8"	7-7/8"
MUD TYPE	FW/Spud Mud	FW/Polymer	LSND
WEIGHT	8.6-9.0	8.4-8.8	8.6-9.0
VISCOSITY	28-32	28-32	45-60
WATER LOSS	NC	NC	8-10

Remarks: Use fibrous materials as needed to control seepage and lost circulation. Pre-treat with 20% LCM @ 3,500'. Pump high viscosity sweeps as needed for hole cleaning. Raise viscosity (>85 sec) at TD for logging. Reduce viscosity after logging for cementing purposes.

2. CASING PROGRAM:

Surface Casing: 8-5/8" casing to be set at ± 365' in 8.8 ppg mud

Interval	Length	Wt	Gr	Cplg	Coll Rating (psi)	Burst Rating (psi)	Jt Str (M-lbs)	ID (in)	Drift (in)	SF Coll	SF Burst	SF Ten
0'-370'	365'	24#	J-55	STC	1370	2950	244	8.097	7.972	7.32	7.95	29.39

Production Casing: 4-1/2" casing to be set at TD in 9.0 ppg mud.

Interval	Length	Wt	Gr	Cplg	Coll Rating (psi)	Burst Rating (psi)	Jt Str (M-lbs)	ID (in)	Drift (in)	SF Coll	SF Burst	SF Ten
0'-TD	4,875'	10.5#	J-55	STC	4010	4790	132	4.052	3.875	1.66	1.33	2.44

3. WELLHEAD:

- Casing Head: Larkin Fig 92 (or equivalent), 9" nominal, 2,000 psig WP (4,000 psig test) with 8-5/8" 8rnd thread on bottom and 11-3/4" 8rnd thread on top.
- Tubing Head: Larkin Fig 612 (or equivalent), 6.456" nominal, 2,000 psig WP (4,000 psig test), 4-1/2" 8rnd female thread on bottom, 8-5/8" 8rnd thread on top.

4. CEMENT PROGRAM (Slurry design may change slightly, but the plan is to circulate cement to surface on both casing strings):

A. Surface: 8-5/8", 24#, J-55, STC casing to be set at $\pm 365'$.

Lead: 260 sx of Class "B" cement containing 2% CaCl_2 , 1/4 pps celloflake, mixed at 15.6 ppg, 1.18 ft^3/sk , & 5.20 gal wtr/sk.

Total slurry volume is 306 ft^3 , 100% excess of calculated annular volume to 400'.

B. Production: 4-1/2", 10.5#, J-55, STC casing to be set at $\pm 4,875'$.

Lead: 275 sx of Class "B" cement containing 2% D-79 (extender), 1/4 pps D-29 (celloflake) and 2% S-1 (CaCl_2) mixed at 11.4 ppg, 2.87 ft^3/sk , 17.63 gal wtr/sx.

Tail: 460 sx of Class "B" cement containing 2% D-79 (extender), 1/4 pps D-29 (celloflake) and 2% S-1 (CaCl_2) mixed at 13.5 ppg, 1.71 ft^3/sk , 8.93 gal wtr/sx..

Total estimated slurry volume (including 40% excess) for the 4-1/2" production casing is 1,577 ft^3 .

Note: The slurry design may change slightly based upon actual conditions. Final cement volumes will be determined for the caliper logs plus 40%. It will be attempted to circ cement to surface.

5. LOGGING PROGRAM:

A. Mud Logger: A two man mud logging unit will be used from 2,900' to TD.

B. Open Hole Logs as follows: Run Dual Induction/SFL/GR/SP fr/TD ($\pm 4,875'$) to the bottom of the surface csg. Run CNL/LDT (Lithodensity)/GR/Cal and Pe from TD to 1,600'.

6. FORMATION TOPS:

Formation	Subsea Depth	Well Depth
Ojo Alamo SS	+4703'	1357'
Kirtland Shale	+4648'	1412'
Fruitland Formation	+4240'	1820'
Lower Fruitland Coal	+3986'	2074'
Pictured Cliffs SS	+3926'	2134'
Lewis Shale	+3775'	2285'
Chacra	+3030'	3030'
Cliffhouse SS	+2362'	3698'
Menefee*	+2243'	3817'
Point Lookout SS*	+1667'	4393'
Mancos Shale	+1338'	4722'
Projected TD	+1185'	4875'

* Target Reservoir(s). Maximum anticipated reservoir pressure will be $\pm 1,550$ psig.



Cross Timbers Operating Company

BOP SCHEMATIC FOR DRILLING OPERATIONS CLASS 1 (2M) NORMAL PRESSURE

