

UNITED STATES
DEPARTMENT OF THE INTERIOR
BUREAU OF LAND MANAGEMENT

APPLICATION FOR PERMIT TO DRILL, DEEPEN, OR PLUG BACK

2001 OCT -2 PM 2:50

1a. Type of Work
DRILL

1b. Type of Well
GAS

2. Operator
BURLINGTON RESOURCES Oil & Gas Company

3. Address & Phone No. of Operator
PO Box 4289, Farmington, NM 87499
(505) 326-9700

4. Location of Well
1885' FNL, 1920' FWL
Latitude 36° 32.0'N, Longitude 107° 46.7'W

5. Lease Number
SF-080117
Unit Reporting Number

6. If Indian, All. or Tribe

7. Unit Agreement Name
Huerfanito Unit

8. Farm or Lease Name
Huerfanito Unit

9. Well Number
34R

10. Field, Pool, Wildcat
Fulcher Kutz Pictured Cliffs

11. Sec., Twn, Rge, Mer. (NMPM)
Sec. 34, T-27-N, R-9-W F
API # 30-045-30864

12. County
San Juan

13. State
NM

14. Distance in Miles from Nearest Town
24 miles from Bloomfield

15. Distance from Proposed Location to Nearest Property or Lease Line
1885'

16. Acres in Lease

17. Acres Assigned to Well
160 NW/4

18. Distance from Proposed Location to Nearest Well, Drig, Compl, or Applied for on this Lease
1800'

19. Proposed Depth
2572'

20. Rotary or Cable Tools
Rotary

21. Elevations (DF, FT, GR, Etc.)
6561' GR

22. Approx. Date Work will Start

23. Proposed Casing and Cementing Program
See Operations Plan attached

24. Authorized by: Penny Call
Regulatory/Compliance Supervisor Date 9-28-01

PERMIT NO. 18/ Jim Lovato APPROVAL DATE 11/9/01
APPROVED BY 18/ Jim Lovato TITLE DATE

Archaeological Report to be submitted

Threatened and Endangered Species Report to be submitted

NOTE: This format is issued in lieu of U.S. BLM Form 3160-3

Title 18 U.S.C. Section 1001, makes it a crime for any person knowingly and willfully to make to any department or agency of the United States any false, fictitious or fraudulent statements or presentations as to any matter within its jurisdiction.

✓
K

District I
PO Box 1980, Hobbs, NM 88241-1980

District II
PO Drawer DD, Artesia, NM 88211-0719

District III
1000 Rio Brazos Rd., Aztec, NM 87410

District IV
PO Box 2088, Santa Fe, NM 87504-2088

State of New Mexico
Energy, Minerals & Natural Resources Department

OIL CONSERVATION DIVISION

PO Box 2088
Santa Fe, NM 87504-2088

Form C-102
Revised February 21, 1994
Instructions on back
Submit to Appropriate District Office
State Lease - 4 Copies
Fee Lease - 3 Copies

070

☐ AMENDED REPORT.

WELL LOCATION AND ACREAGE DEDICATION PLAT

*API Number 30-045-30864		*Pool Code 772.00	*Pool Name Fulcher Kutz Pictured Cliffs
*Property Code 7138	*Property Name HUERFANITO UNIT		*Well Number 34R
*OGRID No. 14538	*Operator Name BURLINGTON RESOURCES OIL & GAS COMPANY LP		*Elevation 6561'

10 Surface Location

UL or lot no.	Section	Township	Range	Lot Idn	Feet from the	North/South line	Feet from the	East/West line	County
F	34	27N	9W		1885	NORTH	1920	WEST	SAN JUAN

11 Bottom Hole Location If Different From Surface

UL or lot no.	Section	Township	Range	Lot Idn	Feet from the	North/South line	Feet from the	East/West line	County

12 Dedicated Acres NW/4 160	13 Joint or Infill	14 Consolidation Code	15 Order No.
--------------------------------	--------------------	-----------------------	--------------

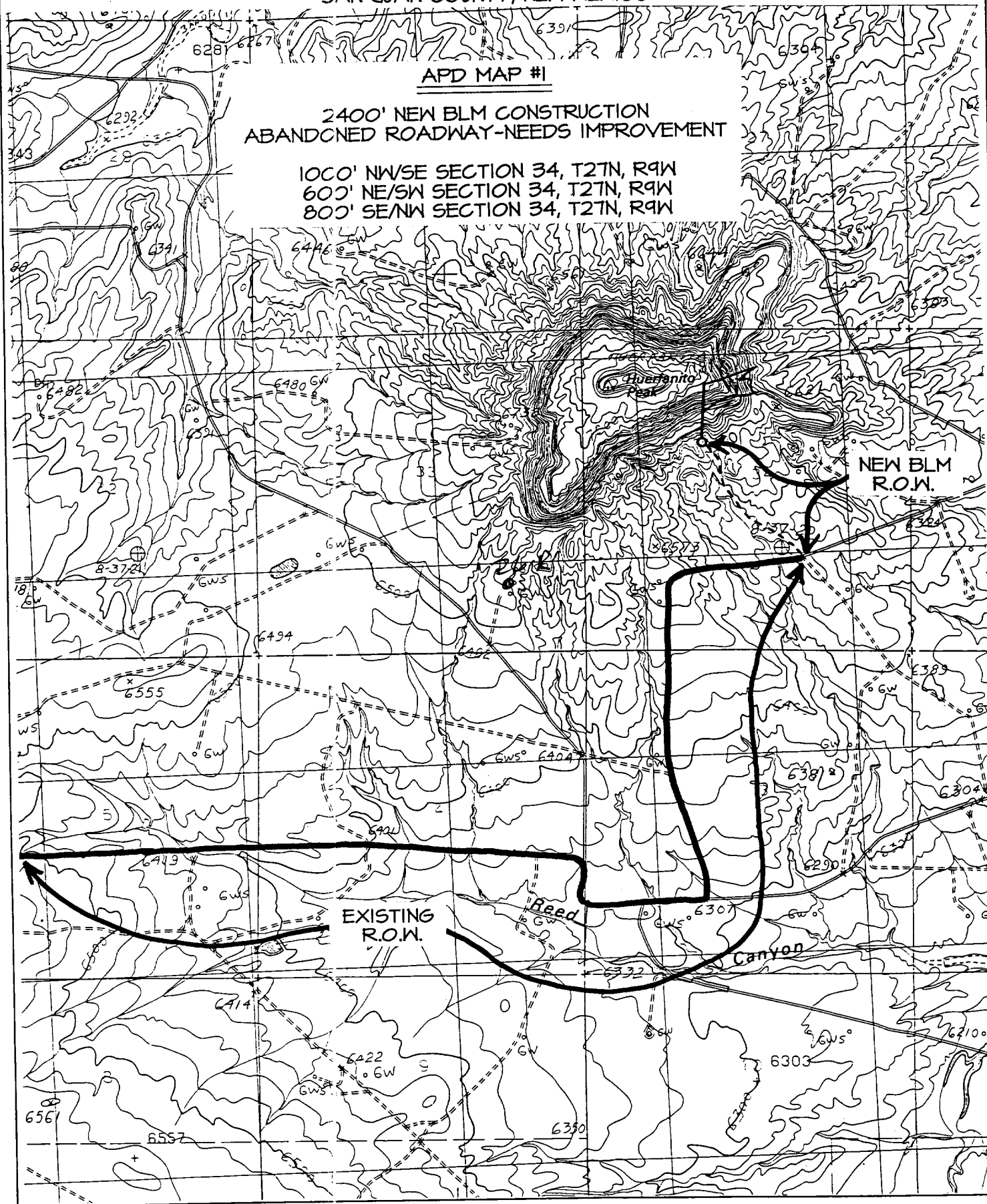
NO ALLOWABLE WILL BE ASSIGNED TO THIS COMPLETION UNTIL ALL INTERESTS HAVE BEEN CONSOLIDATED
OR A NON-STANDARD UNIT HAS BEEN APPROVED BY THE DIVISION

<p>16</p> <p>5273.40'</p> <p>1885'</p> <p>1920'</p> <p>715'</p> <p>755'</p> <p>5281.32'</p> <p>2638.68'</p> <p>2548.26'</p> <p>5291.22'</p> <p>NMSF-080117</p> <p>LAT: 36°32.0'N LONG: 107°46.7'W</p> <p>34</p>	<p>17 OPERATOR CERTIFICATION</p> <p>I hereby certify that the information contained herein is true and complete to the best of my knowledge and belief</p> <p><i>Peggy Cole</i></p> <p>Signature</p> <p>Peggy Cole</p> <p>Printed Name</p> <p>Regulatory Supervisor</p> <p>Title</p> <p>9-28-01</p> <p>Date</p>
	<p>18 SURVEYOR CERTIFICATION</p> <p>I hereby certify that the well location shown on this plat was plotted from field notes of actual surveys made by me or under my supervision, and that the same is true and correct to the best of my belief.</p> <p>JULY 29, 2001</p> <p>Date of Survey</p> <p>Signature and Seal of Surveyor</p> <p>NEALE EDWARDS</p> <p>NEW MEXICO</p> <p>6857</p> <p>Certificate No. 6857</p>

1885' FNL & 1920' FWL, SECTION 34, T27N, R9W, N.M.P.M.
SAN JUAN COUNTY, NEW MEXICO

APD MAP #1

1000' NW/SE SECTION 34, T27N, R9W
600' NE/SW SECTION 34, T27N, R9W
800' SE/NW SECTION 34, T27N, R9W



OPERATIONS PLAN

Well Name: Huerfanito Unit #34R
Location: 1885' FNL, 1920' FWL, Section 34, T-27-N, R-9-W
San Juan County, New Mexico
Latitude 36° 32.0' N, Longitude 107° 46.7' W
Formation: Fulcher Kutz Pictured Cliffs
Elevation: 6561' GR

Formation:	Top	Bottom	Contents
Surface	San Jose	1500'	
Ojo Alamo	1500'	1634'	aquifer
Kirtland	1634'	1961'	gas
Fruitland	1961'	2372'	gas
Pictured Cliffs	2372'		gas
Total Depth	2572'		

Logging Program: cased hole - CBL/GR/CCL TD to surface

Coring Program: None

Mud Program:

Interval	Type	Weight	Vis.	Fluid Loss
0 - 120'	Spud	8.4-9.0	40-50	no control
120-2572'	FW	8.4-9.0	32-45	no control

Casing Program (as listed, equivalent, or better):

Hole Size	Depth Interval	Csg. Size	Wt.	Grade
9 7/8"	0 - 120' —	7"	20#	J-55
6 1/4"	0 - 2572' —	2 7/8"	6.5#	J-55

Float Equipment: 7" surface casing - saw tooth guide shoe.
Centralizers will be run in accordance with Onshore Order #2.

2 7/8" production casing - float shoe on bottom. Three centralizers run every other joint above shoe. Seven centralizers run every 3rd joint to the base of the Ojo Alamo @ 1634'. Two turbolizing type centralizers - one below and one into the base of the Ojo Alamo @ 1634'. Standard centralizers thereafter every fourth joint up to the base of the surface pipe.

Wellhead Equipment: 7" x 2 7/8" 2000 psi screw on independent wellhead.

Cementing:

7" surface casing - cement with 27 sx Class A, B Portland Type I, II cement (32 cu.ft. of slurry, bring cement to surface through 3/4" line). WOC 8 hrs. Test casing to 600 psi for 30 minutes.

2 7/8" production casing - Lead w/347 sx Premium Lite cement w/3% calcium chloride, 1/4 pps flocele, 5 pps LCM-1, 0.4% FL-52, and 0.4% SMS. Tail w/90 sx Type III cement w/1% calcium chloride, 1/4 pps flocele, and 0.2% FL-52 (864 cu.ft. of slurry, 100% excess to circulate to surface).

Note: If open hole logs are run, cement volumes will be based on 25% excess over caliper volumes.

BOP and tests:

Surface to TD - 11" 2000 psi (minimum double gate BOP stack (Reference Figure #1). Prior to drilling out surface casing, test rams to 600 psi/30 min.

Completion - 7 1/16" 2000 psi (minimum) double gate BOP stack (Reference Figure #2). Prior to completion operations, test rams and casing to 2000 psi/15 min.

From surface to TD - choke manifold (Reference Figure #3).

Pipe rams will be actuated to least once each day and blind rams actuated once each trip to test proper functioning. An upper kelly cock valve with handle and drill string safety valves to fit each drill string will be maintained and available on the rig floor.

BOP and tests (If a coiled tubing drilling (CTD) rig is utilized.):

Surface to TD: 7-1/16" 2000 psi (minimum) Torus annular BOP stack (Reference Figure #1b). Prior to drilling out surface casing, test annular BOP to 600psi/30 min.

Completion: 7-1/16" 2000 psi (minimum) double gate BOP stack (Reference Figure #2). Prior to completion operations, test blind rams and casing to 1500 psi for 30 minutes; all pipe rams and casing to 1500 psi for 30 minutes each. **Same as in original APD operations plan.**

From surface to TD: choke manifold (Reference Figure #3). **Same as in original APD operations plan.**

The annular BOP will be actuated to close on drill pipe (coiled tubing) at least once each day and to close on open hole once each trip to test proper functioning.

Additional information:

- * The Pictured Cliffs formation will be completed.
- * Anticipated pore pressure for the Pictured Cliffs is 500 psi.
- * This gas is dedicated.
- * The northwest quarter of Section 34 is dedicated to the Pictured Cliffs.

Eric J. Giles
Drilling Engineer

10/1/01
Date