

UNITED STATES  
DEPARTMENT OF THE INTERIOR  
BUREAU OF LAND MANAGEMENT

## APPLICATION FOR PERMIT TO DRILL OR DEEPEN

1a. TYPE OF WORK

DRILL ☒DEEPEN ☐

b. TYPE OF WELL

OIL  
WELL ☐GAS  
WELL ☒OTHER ☐SINGLE  
ZONE ☒MULTIPLE  
ZONE ☐

2. NAME OF OPERATOR

~~Cross Timbers Operating Company~~

3. ADDRESS AND TELEPHONE NO.

2700 Farmington Ave., Bldg. K. Ste 1 Farmington, NM 87401

4. LOCATION OF WELL (Report location clearly and in accordance with any State requirements.)

At surface

1520' FSL &amp; 800' FEL Sec 29, T27N, R08W

At proposed prod. zone

same

14. DISTANCE IN MILES AND DIRECTION FROM NEAREST TOWN OR POST OFFICE\*

Approx 24 air miles south down Largo Canyon from the Blanco NM Post Office

15. DISTANCE FROM PROPOSED\*

LOCATION TO NEAREST

PROPERTY OR LEASE LINE, FT.

(Also to nearest drlg. unit line, if any) 800'

16. NO. OF ACRES IN LEASE

320

17. NO. OF ACRES ASSIGNED

TO THIS WELL

320

18. DISTANCE FROM PROPOSED LOCATION\*

TO NEAREST WELL, DRILLING, COMPLETED,

OR APPLIED FOR, ON THIS LEASE, FT. 1200'

19. PROPOSED DEPTH

5,100'

20. ROTARY OR CABLE TOOLS

0'-5,100' w/Rotary Tools

21. ELEVATIONS (Show whether DF, RT, GR, etc.)

6,313' GL

22. APPROX. DATE WORK WILL START\*

Summer 2002

23.

## PROPOSED CASING AND CEMENTING PROGRAM

SIZE OF HOLE	GRADE SIZE OF CASING	WEIGHT PER FOOT	SETTING DEPTH	QUANTITY OF CEMENT
12-1/4"	8-5/8", J-55	24#	270-320'	160 sx Type III
7-7/8"	4-1/2", J-55	10.5#	5,100'	705 sx Premium Lite cement

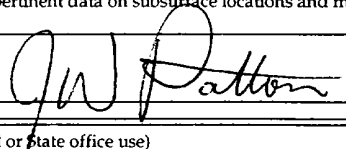
XTO Energy Inc. plans to drill the above mentioned well as described in the enclosed Surface Use Program.

called Jeff P.  
They will run  
320' surfaceDRILLING OPERATIONS AUTHORIZED ARL  
SUBJECT TO COMPLIANCE WITH ATTACHED  
"GENERAL REQUIREMENTS"This action is subject to technical and  
procedural review pursuant to 43 CFR 3165.2  
and appeal pursuant to 43 CFR 3165.4.

IN ABOVE SPACE DESCRIBE PROPOSED PROGRAM: If proposal is to deepen, give data on present productive zone and proposed new productive zone. If proposal is to drill or deepen directionally, give pertinent data on subsurface locations and measured and true vertical depths. Give blowout preventer program, if any.

24.

SIGNED



TITLE

Drilling Engineer

DATE

2/4/02

(This space for Federal or State office use)

PERMIT NO.

APPROVAL DATE

4/18/02

Application approval does not warrant or certify that the applicant holds legal or equitable title to those rights in the subject lease which would entitle the applicant to conduct operations thereon.

CONDITIONS OF APPROVAL, IF ANY:

/s/ David J. Mankiewicz

APPROVED BY

TITLE

AEM

DATE

APR 18 2002

\*See Instructions On Reverse Side

Title 18 U.S.C. Section 1001, makes it a crime for any person knowingly and willfully to make to any department or agency of the United States any false, fictitious or fraudulent statements or representations as to any matter within its jurisdiction.

NM000

DISTRICT I  
1625 N. French Dr., Hobbs, N.M. 88240

State of New Mexico  
Energy, Minerals & Natural Resources Department

Form C-102  
Revised August 15, 2000

DISTRICT II  
811 South First, Artesia, N.M. 88210

Submit to Appropriate District Office  
State Lease -- 4 Copies  
Fee Lease -- 3 Copies

DISTRICT III  
1000 Rio Brazos Rd., Aztec, N.M. 87410

OIL CONSERVATION DIVISION  
2040 South Pacheco  
Santa Fe, NM 87505

☐ AMENDED REPORT

DISTRICT IV  
2040 South Pacheco, Santa Fe, NM 87505

WELL LOCATION AND ACREAGE DEDICATION PLAT

<sup>1</sup> API Number 30-045-31003	<sup>2</sup> Pool Code 72319	<sup>3</sup> Pool Name BLANCO MESA VERDE
<sup>4</sup> Property Code 28096	<sup>5</sup> Property Name BOLACK "C"	<sup>6</sup> Well Number 123
<sup>7</sup> GRID No. 167067	<sup>8</sup> Operator Name XTO ENERGY INC.	<sup>9</sup> Elevation 6313'

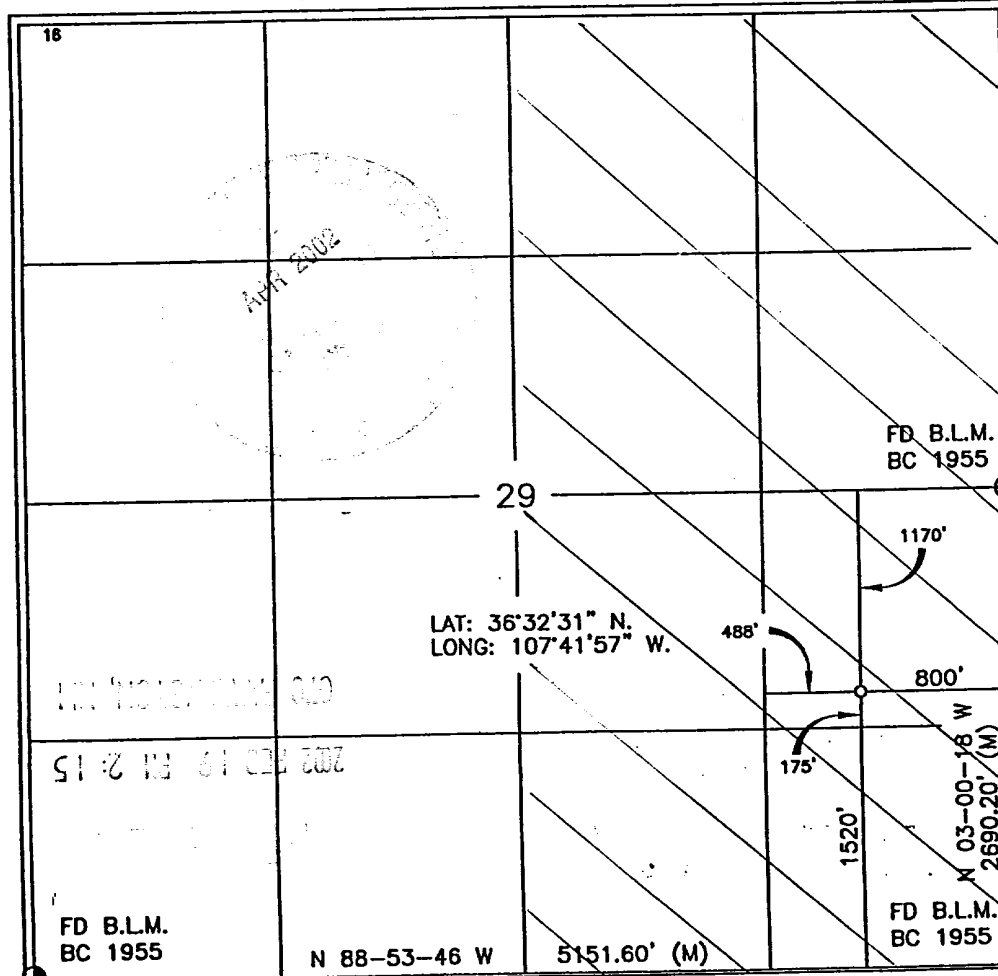
<sup>10</sup> Surface Location

UL or lot no.	Section	Township	Range	Lot Idn	Feet from the	North/South line	Feet from the	East/West line	County
1	29	27-N	8-W		1520'	SOUTH	800'	EAST	SAN JUAN

<sup>11</sup> Bottom Hole Location If Different From Surface

UL or lot no.	Section	Township	Range	Lot Idn	Feet from the	North/South line	Feet from the	East/West line	County
<sup>12</sup> Dedicated Acres 320 E/2			<sup>13</sup> Joint or Infill I		<sup>14</sup> Consolidation Code		<sup>15</sup> Order No.		

NO ALLOWABLE WILL BE ASSIGNED TO THIS COMPLETION UNTIL ALL INTERESTS HAVE BEEN CONSOLIDATED  
OR A NON-STANDARD UNIT HAS BEEN APPROVED BY THE DIVISION



17 17 OPERATOR-CERTIFICATION

I hereby certify that the information contained herein  
is true and complete to the best of my knowledge and  
belief

Signature Jeffrey W. Patton  
Printed Name JEFFREY W. PATTON  
Title DRILLING ENGINEER  
Date 2-4-02

18 SURVEYOR CERTIFICATION

I hereby certify that the well location shown on this plat  
was plotted from field notes of actual surveys made by  
me or under my supervision, and that the same is true  
and correct to the best of my knowledge and belief

Date of Survey 2-4-02  
Signature and Seal of Professional Surveyor [Signature]  
Certificate Number 8894

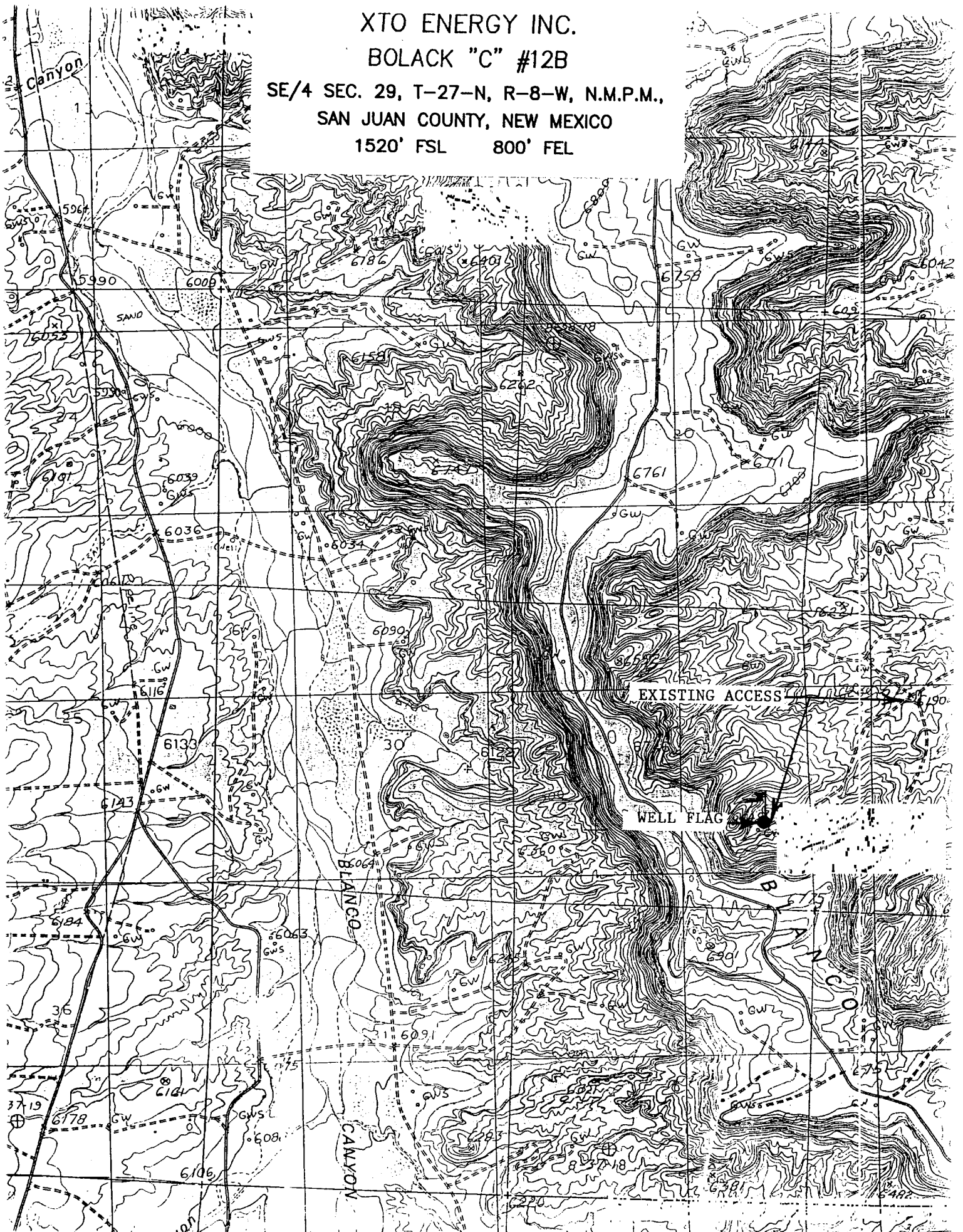
XTO ENERGY INC.

BOLACK "C" #12B

SE/4 SEC. 29, T-27-N, R-8-W, N.M.P.M.,

SAN JUAN COUNTY, NEW MEXICO

1520' FSL 800' FEL



# XTO ENERGY INC.

Bolack "C" #12B

APD Data

February 5, 2002

Location: 1,520' FSL & 800' FEL, Sec 29, T27N, R08W

County: San Juan

State: New Mexico

PROJECTED TOTAL DEPTH: ±5,100'

GR ELEV: 6,313'

OBJECTIVE: Mesaverde

Est KB ELEV: 6,325' (12' AGL)

## 1. MUD PROGRAM:

INTERVAL	0' to 270'	270' to 3,500'	3,500' to TD
HOLE SIZE	12-1/4"	7-7/8"	7-7/8"
MUD TYPE	FW/Spud Mud	FW/Polymer	LSND
WEIGHT	8.6-9.0	8.4-8.8	8.6-9.0
VISCOSITY	28-32	28-32	45-60
WATER LOSS	NC	NC	8-10

Remarks: Use fibrous materials as needed to control seepage and lost circulation. Pre-treat with 20% LCM @ 3,500'. Pump high viscosity sweeps as needed for hole cleaning. Raise viscosity (>85 sec) at TD for logging. Reduce viscosity after logging for cementing purposes.

## 2. CASING PROGRAM:

Surface Casing: 8-5/8" casing to be set at ± 270' in 8.8 ppg mud

Interval	Length	Wt	Gr	Cplg	Coll Rating (psi)	Burst Rating (psi)	Jt Str (M-lbs)	ID (in)	Drift (in)	SF Coll	SF Burst	SF Ten
0' - <del>270'</del>	270'	24#	J-55	STC	1370	2950	244	8.097	7.972	7.32	7.95	29.39

320' H

Production Casing: 4-1/2" casing to be set at TD in 9.0 ppg mud.

Interval	Length	Wt	Gr	Cplg	Coll Rating (psi)	Burst Rating (psi)	Jt Str (M-lbs)	ID (in)	Drift (in)	SF Coll	SF Burst	SF Ten
0'-TD	5,100'	10.5#	J-55	STC	4010	4790	132	4.052	3.875	1.66	1.33	2.44

## 3. WELLHEAD:

- Casing Head: Larkin Fig 92 (or equivalent), 9" nominal, 2,000 psig WP (4,000 psig test) with 8-5/8" 8rnd thread on bottom and 11-3/4" 8rnd thread on top.
- Tubing Head: Larkin Fig 612 (or equivalent), 6.456" nominal, 2,000 psig WP (4,000 psig test), 4-1/2" 8rnd female thread on bottom, 8-5/8" 8rnd thread on top.

**4. CEMENT PROGRAM (Slurry design may change slightly, but the plan is to circulate cement to surface on both casing strings):**

A. Surface: 8-5/8", 24#, J-55, STC casing to be set at  $\pm 270'$ .

Lead: 160 sx of "Type III" cement containing 3%  $\text{CaCl}_2$ , ¼ pps celloflake, mixed at 14.5 ppg, 1.39 ft<sup>3</sup>/sk, & 6.50 gal wtr/sk.

*Total slurry volume is 222 ft<sup>3</sup>, 100% excess of calculated annular volume to 270'.*

B. Production: 4-1/2", 10.5#, J-55, STC casing to be set at  $\pm 5,100'$ .

Lead: 555 sx of Premium Lite FM (65/35/6) cement containing 2% KCl, ¼ pps celloflake 2-4% Phenoseal mixed at 11.9 ppg, 2.39 ft<sup>3</sup>/sk, 15.60 gal wtr/sx.

Tail: 150 sx of Premium Lite HS (65/35/6) cement containing 2% KCl, 7#/sx CSE, ¼ pps celloflake, 0.5% Fluid loss, 0.2% Dispersant mixed at 12.5 ppg, 2.01 ft<sup>3</sup>/sk, 10.71 gal wtr/sx.

*Total estimated slurry volume (including 40% excess) for the 4-1/2" production casing is 1,628 ft<sup>3</sup>.*

*Note: The slurry design may change slightly based upon actual conditions. Final cement volumes will be determined for the caliper logs plus 40%. It will be attempted to circ cement to surface.*

**5. LOGGING PROGRAM:**

A. Mud Logger: There are no plans to use a mud logger at this time.

B. Open Hole Logs as follows: Run Dual Induction/SFL/GR/SP fr/TD ( $\pm 5,100'$ ) to the bottom of the surface csg. Run CNL/LDT (Lithodensity)/GR/Cal and Pe from TD to 3,100'.

**6. FORMATION TOPS:**

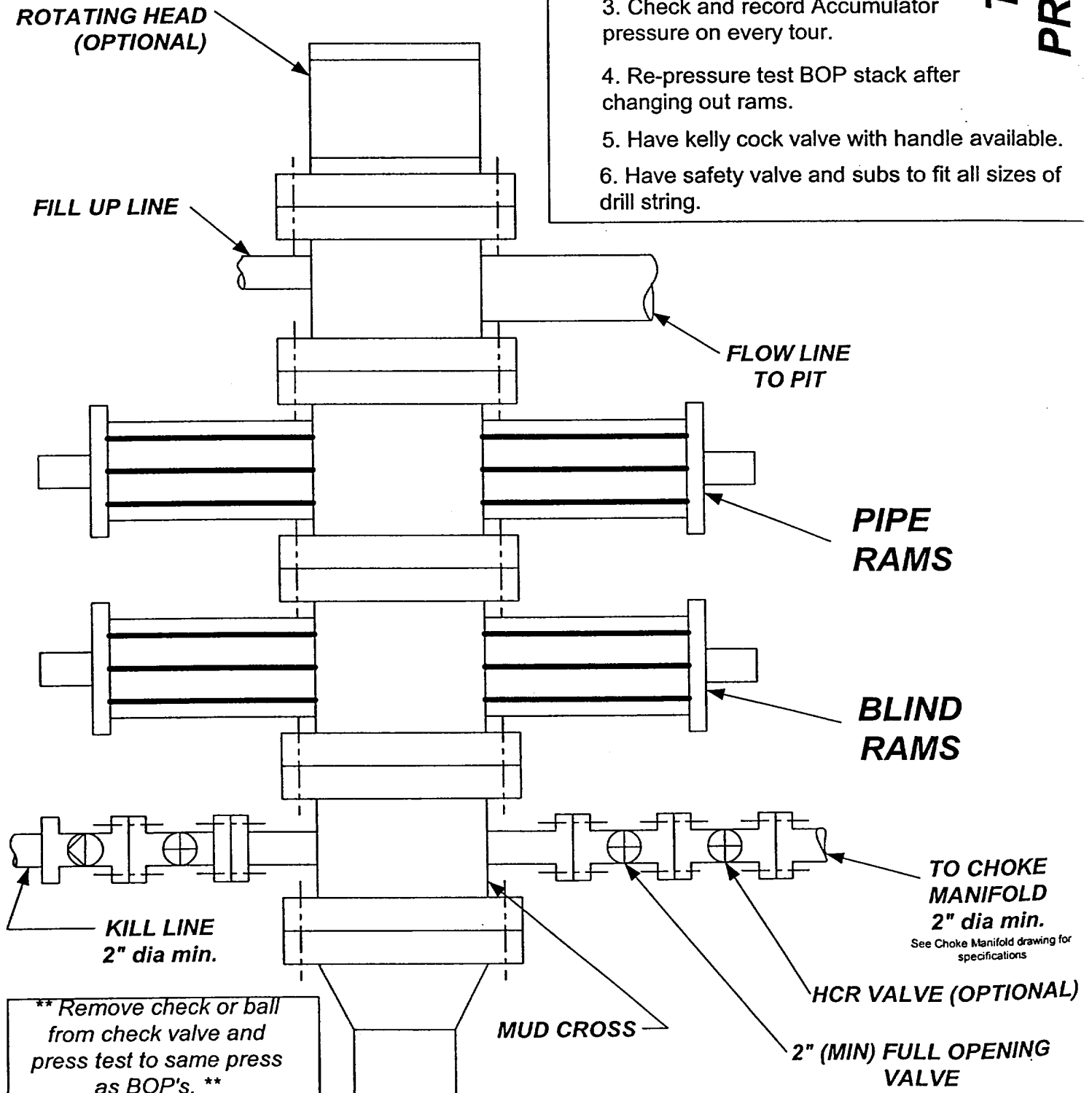
Formation	Subsea Depth	Well Depth
Ojo Alamo SS	+4750'	1578'
Kirtland Shale	+4686'	1642'
Fruitland Formation	+4208'	2120'
Lower Fruitland Coal	+4048'	2280'
Pictured Cliffs SS	+3991'	2337'
Lewis Shale	+3889'	2439'
Chacra	+3098'	3230'
Cliffhouse SS	+2424'	3904'
Menefee*	+2349'	3979'
Point Lookout SS*	+1726'	4602'
Mancos Shale	+1400'	4928'
Projected TD	+1228'	5100'

\* Target Reservoir. Maximum anticipated reservoir pressure will be  $\pm 1,550$  psig.

# **BOP SCHEMATIC FOR DRILLING OPERATIONS CLASS 1 (2M) NORMAL PRESSURE**

## **TESTING PROCEDURE**

1. Test BOP after installation:  
Pressure test BOP to 200-300 psig (low pressure) for 5 min.  
Test BOP to Working Press or to 70% internal yield of surf csg (10 min).
2. Test operation of (both) rams on every trip.
3. Check and record Accumulator pressure on every tour.
4. Re-pressure test BOP stack after changing out rams.
5. Have kelly cock valve with handle available.
6. Have safety valve and subs to fit all sizes of drill string.



UNITED STATES  
DEPARTMENT OF THE INTERIOR  
BUREAU OF LAND MANAGEMENT

FORM APPROVED  
Budget Bureau No. 1004-0135  
Expires November 30, 2000

SUNDRY NOTICES AND REPORTS ON WELLS

Do not use this form for proposals to drill or to re-enter an abandoned well. Use Form 3160-3 (APD) for such proposals.

SUBMIT IN TRIPLICATE - Other instructions on reverse side

1. Type of Well  
☐ Oil Well ☒ Gas Well ☐ Other

2. Name of Operator  
XTO Energy Inc.

3a. Address 2700 Farmington Ave., Bldg. K. Ste 1 Farmington, NM 87401505-324-1090

4. Location of Well (Footage, Sec., T., R., M., or Survey Description)  
1520' FNL & 800' FEL SEC 29, T17N, R08W NESE  
27N

5. Lease Serial No.  
SF 079232  
6. If Indian, Allottee or Tribe Name  
7. If Unit or CA/Agreement, Name and/or No  
8. Well Name and No.  
BOLACK C #12B  
9. API Well No.  
30-045-31003  
10. Field and Pool, or Exploratory Area  
BLANCO MESAVERDE  
11. County or Parish, State  
SAN JUAN NM

12. CHECK APPROPRIATE BOX(ES) TO INDICATE NATURE OF NOTICE, REPORT, OR OTHER DATA

TYPE OF SUBMISSION	TYPE OF ACTION
<input type="checkbox"/> Notice of Intent	<input type="checkbox"/> Acidize <input type="checkbox"/> Deepen <input type="checkbox"/> Production (Start/Resume) <input type="checkbox"/> Water Shut-Off
<input checked="" type="checkbox"/> Subsequent Report	<input type="checkbox"/> Alter Casing <input type="checkbox"/> Fracture Treat <input type="checkbox"/> Reclamation <input type="checkbox"/> Well Integrity
<input type="checkbox"/> Final Abandonment Notice	<input type="checkbox"/> Casing Repair <input type="checkbox"/> New Construction <input type="checkbox"/> Recomplete <input checked="" type="checkbox"/> Other TD, SET
	<input type="checkbox"/> Change Plans <input type="checkbox"/> Plug and Abandon <input type="checkbox"/> Temporarily Abandon <input type="checkbox"/> PROD CSG
	<input type="checkbox"/> Convert to Injection <input type="checkbox"/> Plug Back <input type="checkbox"/> Water Disposal

13. Describe Proposed or Completed Operation (clearly state all pertinent details, including estimated starting date of any proposed work and approximated duration thereof. If the proposal is to deepen directionally or recomplete horizontally, give subsurface locations and measured and true vertical depths of all pertinent markers and zones. Attach the Bond under which the work will be performed or provide the Bond No. on file with BLM/BIA. Required subsequent reports shall be filed within 30 days following completion of the involved operations. If the operation results in a multiple completion or recompletion in a new interval, a Form 3160-4 shall be filed once testing has been completed. Final Abandonment Notices shall be filed only after all requirements, including reclamation, have been completed, and the operator has determined that the final site is ready for final inspection.)

5/7/02 - 5/10/02: Reached drillers TD of 5,102' KB @ 11:30 p.m., 5/7/02. TIH w/123 jts 4-1/2", 10.5#, J-55, ST&C csg to 5,102' KB. Cemented casing w/600 sx Type III w/3% extender, 1/4#/sx cello & 2% Phenoseal (mixed @ 11.4 ppg & 2.89 cuft/sx) followed by (tail) 150 sx Premium Lite HS (65/35/6) w/2% KCl, 0.2% dispersant, 0.5% fluid loss, 2% Phenoseal, 4.5% gel & 1/4#/sx cello (mixed @ 12.5 ppg & 2.01 cuft/sx). Circulated 15 barrels cement to surface. Released Bearcat Drilling Rig #2 @ 6:00 p.m., 5/10/02.

\*\*\* WILL PRESSURE TEST PRODUCTION CASING AT TIME OF COMPLETION \*\*\*

ENTERED  
AFMCS  
MAY 28 2002

2002 MAY 13 PM 1:55  
FARMINGTON FIELD OFFICE

14. I hereby certify that the foregoing is true and correct  
Name (Printed/Typed)

JEFFREY PATTON

Title BY  
DRILLING ENGINEER

Date 5/10/02

ACCEPTED FOR RECORD

THIS SPACE FOR FEDERAL OR STATE OFFICE USE

Approved by

Title

Date

Conditions of approval, if any, are attached. Approval of this notice does not warrant or certify that the applicant holds legal or equitable title to those rights in the subject lease which would entitle the applicant to conduct operations thereon.

Office

MAY 28 2002  
FARMINGTON FIELD OFFICE  
BY

Title 18 U.S.C. Section 1001, makes it a crime for any person knowingly and willfully to make to any department or agency of the United States any false, fictitious or fraudulent statements or representations as to any matter within its jurisdiction.

(Instructions on reverse)

AFMCS