

UNITED STATES
DEPARTMENT OF THE INTERIOR
BUREAU OF LAND MANAGEMENT

APPLICATION FOR PERMIT TO DRILL, DEEPEN, OR PLUG BACK

1a. TYPE OF WORK PLUG BACK	RECEIVED MAY 29 1990	5. LEASE NUMBER SF-046563
1b. TYPE OF WELL GAS		6. IF INDIAN, ALL. OR TRIBE NAME
2. OPERATOR MERIDIAN OIL INC	OIL CON. DIV., DIST. 3	7. UNIT AGREEMENT NAME
3. ADDRESS & PHONE NO. OF OPERATOR P.O. BOX 4289 FARMINGTON, NM 87499 (505) 326-9700		8. FARM OR LEASE NAME FEASEL A
4. LOCATION OF WELL 990' FNL; 1070' FWL		9. WELL NO. #3
14. DISTANCE IN MILES FROM NEAREST TOWN	12. COUNTY SAN JUAN	13. STATE NM
15. DISTANCE FROM PROPOSED LOCATION TO NEAREST PROPERTY OR LEASE LINE.	16. ACRES IN LEASE	17. ACRES ASSIGNED TO WELL 320.00
18. DISTANCE FROM PROPOSED LOCATION TO NEAREST WELL DR. COMPL., OR APPLIED FOR ON THIS LEASE.	19. PROPOSED DEPTH	20. ROTARY OR CABLE TOOLS
21. ELEVATIONS (DF, FT, GR, ETC.) 5955' DF	22. APPROX. DATE WORK WILL START	

23. PROPOSED CASING AND CEMENTING PROGRAM

*SEE OPERATIONS PLAN

24. AUTHORIZED BY: [Signature] (SHL)
REGULATORY AFFAIRS

5-22-90
DATE

PERMIT NO. _____ APPROVAL DATE _____

APPROVED BY _____ TITLE _____ DATE _____

NOTE: THIS FORMAT IS ISSUED IN LIEU OF US BLM FORM 3160-3.
(NO ADDITIONAL DIRT WORK WILL BE REQUIRED)

APPROVED

MAY 24 1990
FOR Ken Townsend
AREA MANAGER

Submit to Appropriate
District Office
State Leases - 4 copies
Fee Leases - 3 copies

State of New Mexico
Energy, Minerals and Natural Resources Department

Form C-102
Revised 1-1-89

OIL CONSERVATION DIVISION

P.O. Box 2088

Santa Fe, New Mexico 87504-2088

DISTRICT I

P.O. Box 1980, Hobbs, NM 88240

DISTRICT II

P.O. Drawer DD, Artesia, NM 88210

DISTRICT III

1000 Rio Brazos Rd., Aztec, NM 87410

WELL LOCATION AND ACREAGE DEDICATION PLAT

All Distances must be from the outer boundaries of the section

Operator Meridian Oil Inc.			Lease Feasel A (SF-046563)		Well No. 3
Unit Letter D	Section 34	Township 28 North	Range 10 West	County NMNM	San Juan
Actual Footage Location of Well: 990 feet from the North line and 1070 feet from the West line					
Ground level Elev. 5955' DF	Producing Formation Fruitland Coal		Pool Basin	Dedicated Acreage: 320 Acres	

1. Outline the acreage dedicated to the subject well by colored pencil or hatchure marks on the plat below.

2. If more than one lease is dedicated to the well, outline each and identify the ownership thereof (both as to working interest and royalty).

3. If more than one lease of different ownership is dedicated to the well, have the interest of all owners been consolidated by communitization, unitization, force-pooling, etc.?

☐ Yes

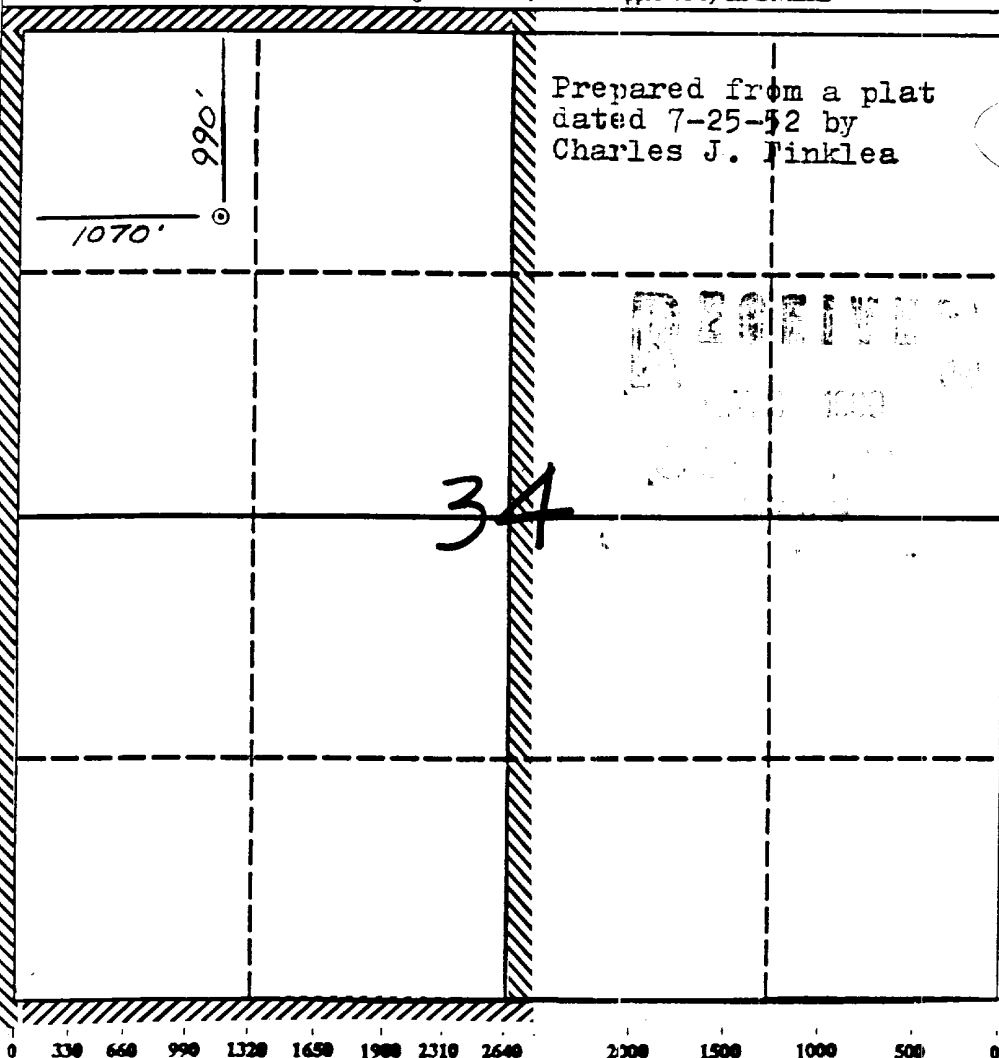
☐ No

If answer is "yes" type of consolidation communitization agreement will be

If answer is "no" list the owners and tract descriptions which have actually been consolidated. (Use reverse side of this form if necessary.)

obtained

No allowable will be assigned to the well until all interests have been consolidated (by communitization, unitization, forced-pooling, or otherwise) or until a non-standard unit, eliminating such interest, has been approved by the Division.



OPERATOR CERTIFICATION

I hereby certify that the information contained herein is true and complete to the best of my knowledge and belief.

Signature

Peggy Bradfield

Printed Name

Regulatory Affairs

Position

Meridian Oil Inc.

Company

5-22-90

Date

SURVEYOR CERTIFICATION

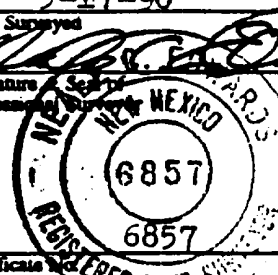
I hereby certify that the well location shown on this plat was plotted from field notes of actual surveys made by me or under my supervision, and that the same is true and correct to the best of my knowledge and belief.

5-17-90

Date Surveyed

Signature of Surveyor

Professional Surveyor



Certificate No.

Neale C. Edwards

RECOMPLETION PROCEDURE
FEASEL A #3

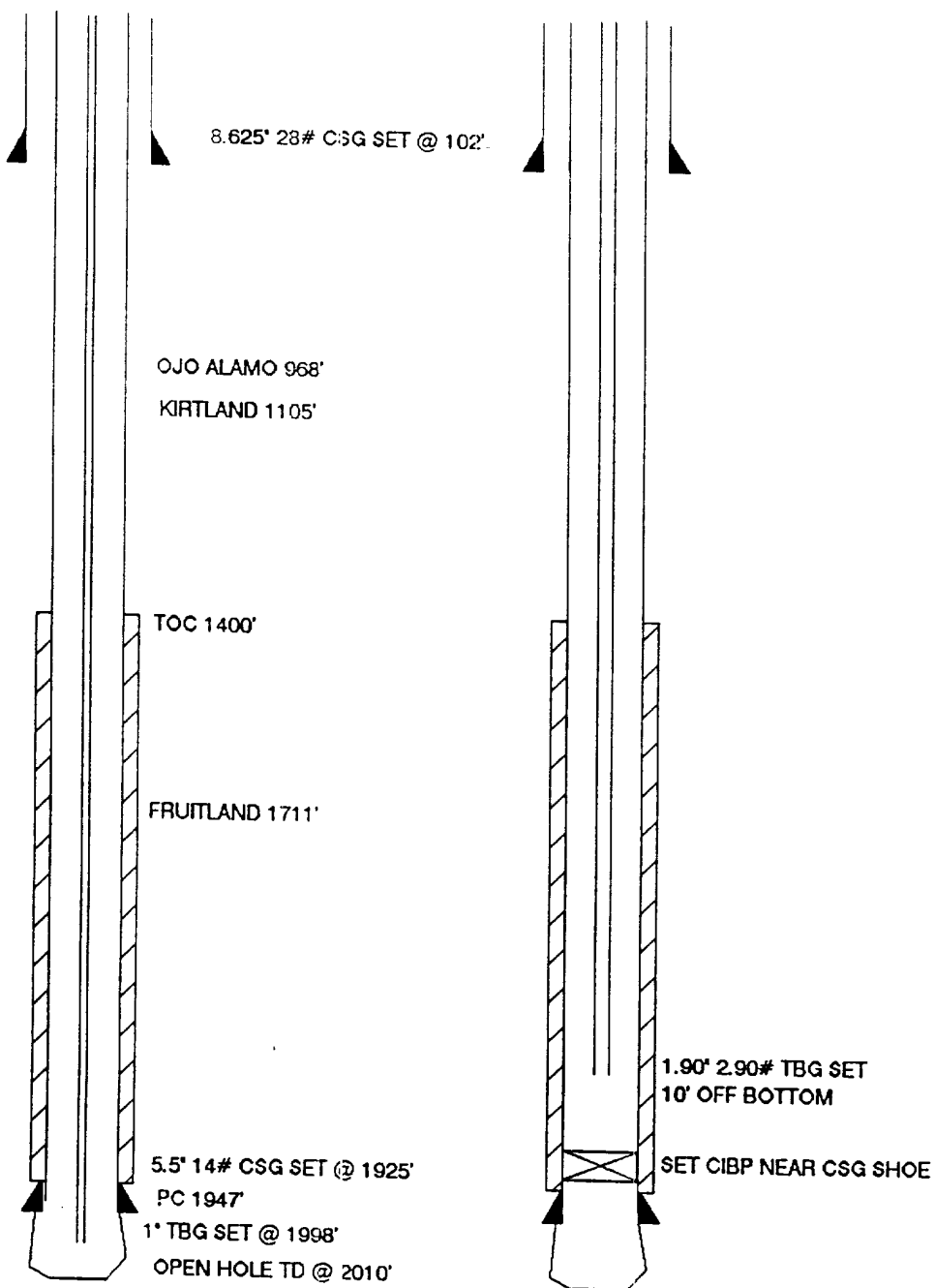
1. MOL and RU. ND wellhead. NU BOP.
2. TOOH with 1" tubing.
3. Run GR-CCL-CNL. Pick perforations from log.
5. Set a 5 1/2" CIBP as close to the bottom Fruitland coal perforation as possible. Pressure test casing to 1000 psi for 15 minutes.
6. Perforate across the coal. Projected zones to be selected from CNL log run.
7. TIH with 2 3/8" tubing and swab wellbore dry.
8. TIH with 1 1/2" tubing and clear out to CIBP.
9. Land 1 1/2" tubing near bottom perforation. Swab well in. Record final 30, 45, and 60 minute gauges on morning report. ND BOP. NU tree. RD and release rig.
10. Evaluate well's performance for possible fracture stimulation. A fracture stimulation procedure will be provided if necessary.

FEASEL A #3

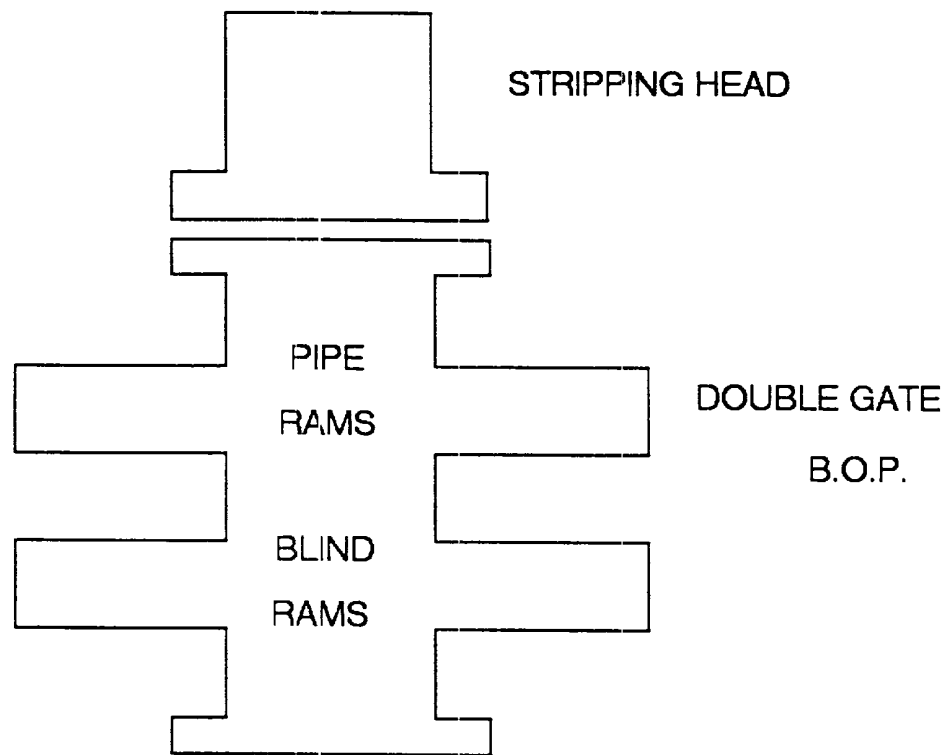
WELLBORE DIAGRAMS

BEFORE R/C

AFTER R/C



WORKOVER / RECOMPLETION B.O.P. SCHEMATIC



MINIMUM: 6" 2000 PSI DOUBLE GATE B.O.P.
MAXIMUM ANTICIPATED SHUT-IN WELLHEAD
PRESSURE IS LESS THAN 2000 PSI