

UNITED STATES
DEPARTMENT OF THE INTERIOR
GEOLOGICAL SURVEY

APPLICATION FOR PERMIT TO DRILL, DEEPEN, OR PLUG BACK

1a. TYPE OF WORK

DRILL ☒DEEPEN ☐PLUG BACK ☐

b. TYPE OF WELL

OIL
WELL ☐GAS
WELL ☒

OTHER

SINGLE
ZONE ☒MULTIPLE
ZONE ☐

2. NAME OF OPERATOR

TENNECO OIL COMPANY

3. ADDRESS OF OPERATOR

P. O. BOX 1714, DURANGO, COLORADO

4. LOCATION OF WELL (Report location clearly and in accordance with any State requirements.)*

At surface

1065 FNL 1850 FEL

At proposed prod. zone

14. DISTANCE IN MILES AND DIRECTION FROM NEAREST TOWN OR POST OFFICE*

10. DISTANCE FROM PROPOSED*

LOCATION TO NEAREST
PROPERTY OR LEASE LINE, FT.
(Also to nearest drig. unit line, if any)

16. NO. OF ACRES IN LEASE

320

17. NO. OF ACRES ASSIGNED
TO THIS WELL

320 E/2

18. DISTANCE FROM PROPOSED LOCATION*
TO NEAREST WELL, DRILLING, COMPLETED,
OR APPLIED FOR, ON THIS LEASE, FT.

19. PROPOSED DEPTH

7655

20. ROTARY OR CABLE TOOLS

Rotary

21. ELEVATIONS (Show whether DF, RT, GR, etc.)

6817 GR

22. APPROX. DATE WORK WILL START*

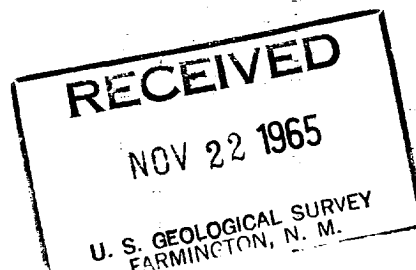
November 25, 1965

23.

PROPOSED CASING AND CEMENTING PROGRAM

SIZE OF HOLE	SIZE OF CASING	WEIGHT PER FOOT	SETTING DEPTH	QUANTITY OF CEMENT
12 1/4	8 5/8	24#	250	125 sx
7 7/8 to	4 1/2	10.5#	0-6655	1st stage 235 sx
6 3/4 to	4 1/2	11.6#	6655-7655	2nd stage sufficient to circulate to surface.

We propose to rig up drill w/rotary to approximate TD 7655. Run IES & GR Density Logs. Set casing w/stage collar set approximately 300' below bottom of Mesaverde. Perforate frac and complete as single Dakota producer. Run 2 3/8" tubing and test.



IN ABOVE SPACE DESCRIBE PROPOSED PROGRAM: If proposal is to deepen or plug back, give data on present productive zone and proposed new productive zone. If proposal is to drill or deepen directionally, give pertinent data on subsurface locations and measured and true vertical depths. Give blowout preventer program, if any.

24.

SIGNED

Harold C. Nichols

TITLE

Sr. Production Clerk

DATE

November 18, 1965

(This space for Federal or State office use)

PERMIT NO.

APPROVAL DATE

APPROVED BY

TITLE

DATE

CONDITIONS OF APPROVAL, IF ANY:

Distribution:

5 to USGS in Farmington

1 to Continental

*See Instructions On Reverse Side

NEW MEXICO OIL CONSERVATION COMMISSION
WELL LOCATION AND ACREAGE DEDICATION PLAT

Form No. 1
Supersedes Form C-12B
Date 11/18/65

Center must be from the outer boundaries of the Section

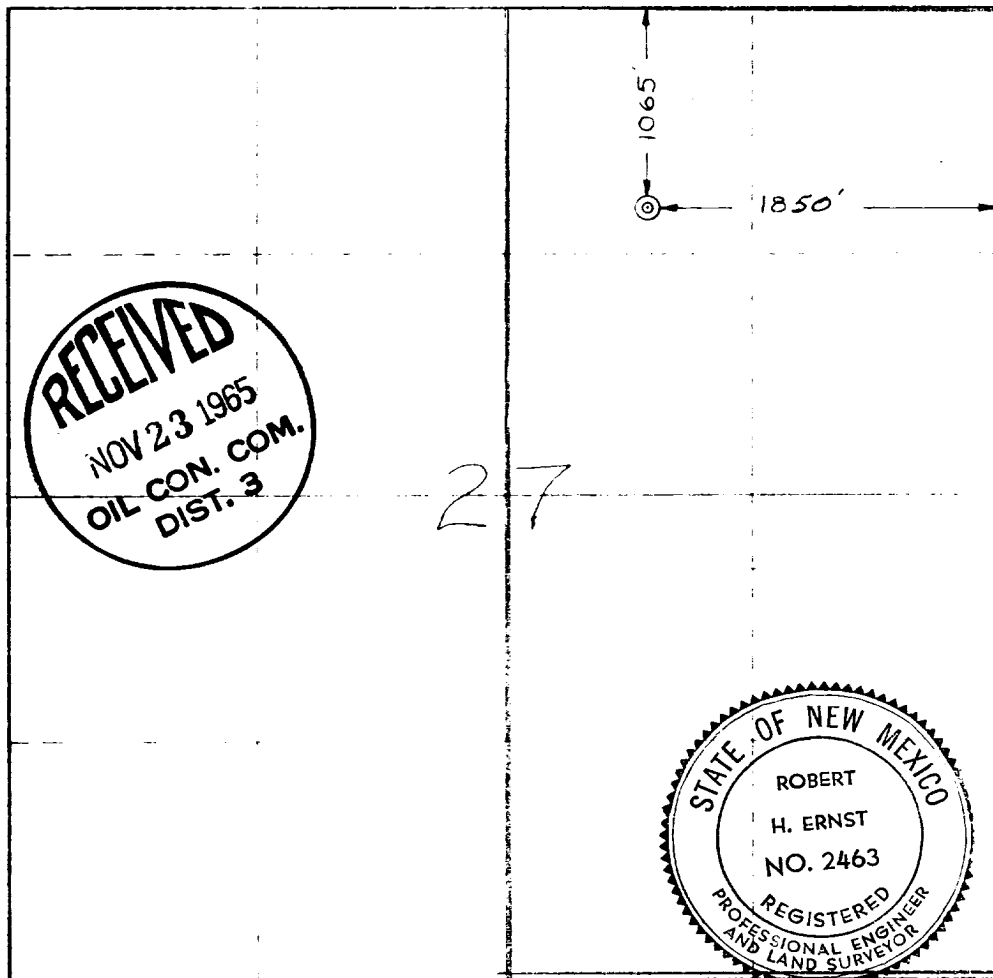
TENNECO OIL COMPANY		STOREY 6		3	
B	27	28 North	9 West	San Juan	
1065	North		1850	East	
6817' ungraded	Dakota	Basin Dakota		320	E/2

1. Outline the acreage dedicated to the subject well by colored pencil or hatchure marks on the plat below.
2. If more than one lease is dedicated to the well, outline each and identify the ownership thereof (both as to working interest and royalty)
3. If more than one lease of different ownership is dedicated to the well, have the interests of all owners been consolidated by communitization, unitization, force-pooling etc?

☐ Yes ☐ No If answer is "yes" type of consolidation _____

If answer is "no" list the owners and tract descriptions which have actually been consolidated (Use reverse side of this form if necessary) _____

No allowable will be assigned to the well until all interests have been consolidated (by communitization, unitization, forced-pooling, or otherwise) or until a non-standard unit, eliminating such interests, has been approved by the Commission.



CERTIFICATION

I hereby certify that the information contained herein is true and complete to the best of my knowledge and belief

Harold C. Nichols
Sr. Production Clerk

Tenneco Oil Company

November 18, 1965

I hereby certify that the well location shown on this plat was plotted from field notes of actual surveys made by me or under my supervision, and that the same is true and correct to the best of my knowledge and belief

Harold C. Nichols

12 November 1965

Robert H. Ernst
ROBERT H. ERNST

N. Mex. PE & LS 2463