

UNITED STATES
DEPARTMENT OF THE INTERIOR
GEOLOGICAL SURVEY

APPLICATION FOR PERMIT TO DRILL, DEEPEN, OR PLUG BACK

1a. TYPE OF WORK

DRILL ☒

DEEPEN ☐

PLUG BACK ☐

b. TYPE OF WELL

OIL
WELL ☐

GAS
WELL ☒

OTHER

SINGLE
ZONE ☒

MULTIPLE
ZONE ☐

2. NAME OF OPERATOR

Chaparral Oil & Gas Company

3. ADDRESS OF OPERATOR

Box B, Aztec, New Mexico

4. LOCATION OF WELL (Report location clearly and in accordance with any State requirements.)*
At surface

1450 FSL & 1850 FEL, Section 13-28N-11W

At proposed prod. zone

14. DISTANCE IN MILES AND DIRECTION FROM NEAREST TOWN OR POST OFFICE*

15. DISTANCE FROM PROPOSED*
LOCATION TO NEAREST
PROPERTY OR LEASE LINE, FT.
(Also to nearest drilg. unit line, if any)

16. NO. OF ACRES IN LEASE

160

17. NO. OF ACRES ASSIGNED
TO THIS WELL

160

18. DISTANCE FROM PROPOSED LOCATION*
TO NEAREST WELL, DRILLING, COMPLETED,
OR APPLIED FOR, ON THIS LEASE, FT.

19. PROPOSED DEPTH

1990

20. ROTARY OR CABLE TOOLS

Rotary Tools

21. ELEVATIONS (Show whether DF, RT, GR, etc.)

5838 Gr

22. APPROX. DATE WORK WILL START*
February 2, 1970

23.

PROPOSED CASING AND CEMENTING PROGRAM

SIZE OF HOLE	SIZE OF CASING	WEIGHT PER FOOT	SETTING DEPTH	QUANTITY OF CEMENT
12-1/4"	8-5/8"	24.00	90'	100 sz
6-3/4"	4-1/2"	9.50	1990'	250 sz

PROPOSE TO:

Set 8-5/8" surface casing at approximately 90' cmt with 100 sz cmt.
Drill 6-3/4" hole to approximately T.D. of 1990' or thru P.C. Formation.
Run 4 1/2" casing, cement with 250 sz.
Perf Picture Cliff formation. Sand water. Frac with 30,000 sand & water.
Run 1" Siphon String.
Put on production.

IN ABOVE SPACE DESCRIBE PROPOSED PROGRAM: If proposal is to deepen or plug back, give data on present productive zone and proposed new productive zone. If proposal is to drill or deepen directionally, give pertinent data on subsurface locations, and measured and true vertical depths. Give blowout preventer program, if any.

24.

SIGNED

[Signature]

TITLE

President

DATE February 2, 1970

(This space for Federal or State office use)

PERMIT NO.

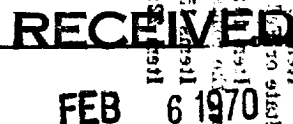
APPROVAL DATE

APPROVED BY

[Signature]

TITLE

CONDITIONS OF APPROVAL, IF ANY:



*See Instructions On Reverse Side

U.S. GEOLOGICAL SURVEY

NEW MEXICO OIL CONSERVATION COMMISSION
WELL LOCATION AND ACREAGE DEDICATION PLAT

Form C-102
Supersedes C-128
Effective 1-1-65

All distances must be from the outer boundaries of the Section.

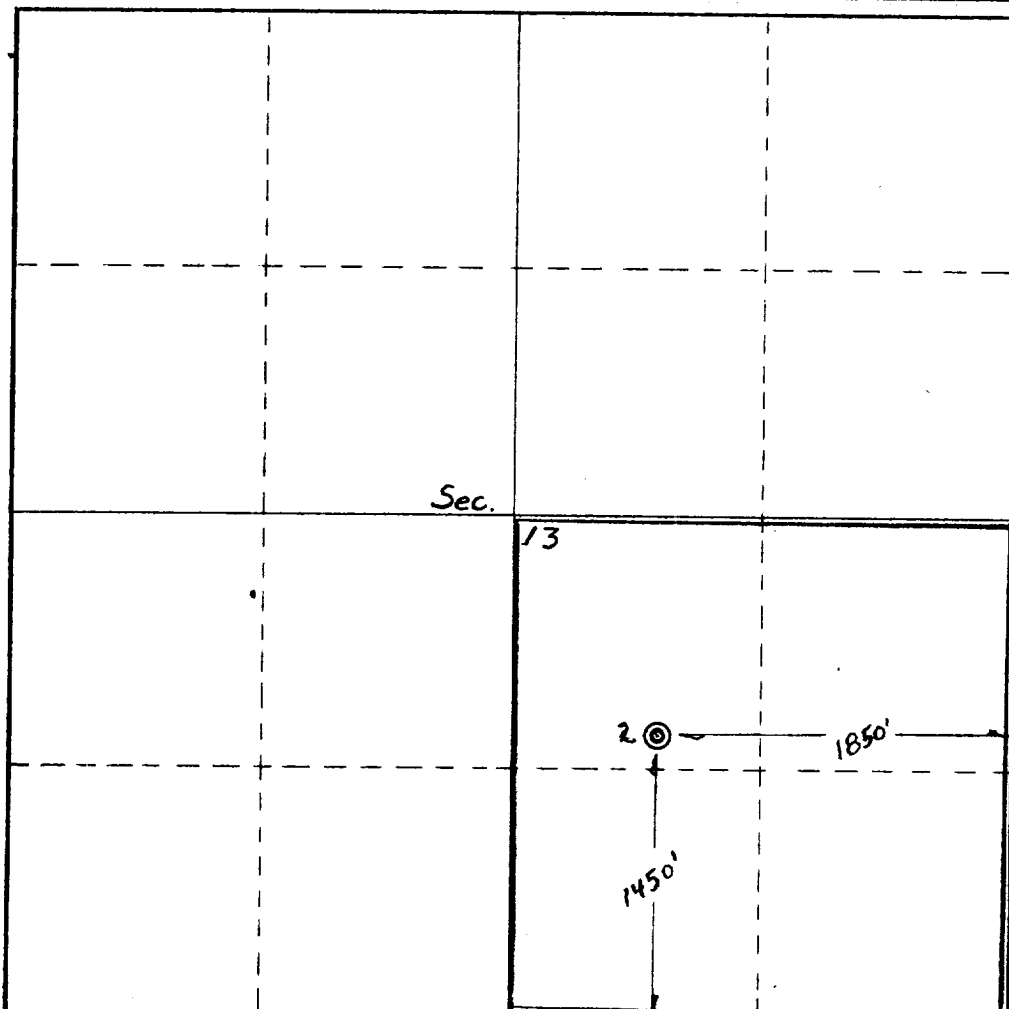
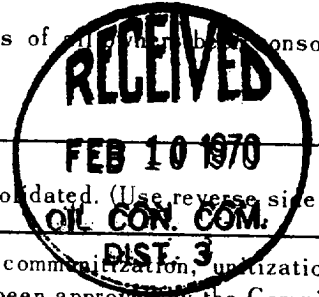
Operator Chaparral Oil & Gas Co.			Lease Marie		Well No. 1
Unit Letter J	Section 13	Township 28N	Range 11W	County San Juan	
Actual Footage Location of Well: 1450' feet from the South line and 1850' feet from the East line					
Ground Level Elev. 5838	Producing Formation Pictured Cliffs	Pool Fulcher Kutz		Dedicated Acreage: 160 Acres	

- Outline the acreage dedicated to the subject well by colored pencil or hachure marks on the plat below.
- If more than one lease is dedicated to the well, outline each and identify the ownership thereof (both as to working interest and royalty).
- If more than one lease of different ownership is dedicated to the well, have the interests of all leases consolidated by communitization, unitization, force-pooling, etc?

☐ Yes ☐ No If answer is "yes," type of consolidation _____

If answer is "no," list the owners and tract descriptions which have actually been consolidated. (Use reverse side of this form if necessary.) _____

No allowable will be assigned to the well until all interests have been consolidated (by communitization, unitization, forced-pooling, or otherwise) or until a non-standard unit, eliminating such interests, has been approved by the Commission.



CERTIFICATION

I hereby certify that the information contained herein is true and complete to the best of my knowledge and belief.

Name *[Signature]*
Position _____

President
Company Chaparral Oil & Gas

Date February 2, 1970

I hereby certify that the well location shown on this plat was plotted from field notes of actual surveys made by me or under my supervision, and that the same is true and correct to the best of my knowledge and belief.

Date Surveyed January 29, 1970
Registered Professional Engineer and/or Land Surveyor *[Signature]*

Fred B. Kere
Certification No. 3050

