

UNITED STATES
DEPARTMENT OF THE INTERIOR
GEOLOGICAL SURVEY

30-045-20961

APPLICATION FOR PERMIT TO DRILL, DEEPEN, OR PLUG BACK

1a. TYPE OF WORK

DRILL ☒DEEPEN ☐PLUG BACK ☐

b. TYPE OF WELL

OIL
WELL ☐GAS
WELL ☒

OTHER

SINGLE
ZONE ☒MULTIPLE
ZONE ☐

2. NAME OF OPERATOR

W. M. GALLAWAY

3. ADDRESS OF OPERATOR

101-2 Petroleum Plaza Bldg., Farmington, N.M. 87401

4. LOCATION OF WELL (Report location clearly and in accordance with any State requirements.)*

At surface

1025' FSL, 1850' FWL

At proposed prod. zone

Same

14. DISTANCE IN MILES AND DIRECTION FROM NEAREST TOWN OR POST OFFICE*

Approx. three miles south of Bloomfield, N.M.

15. DISTANCE FROM PROPOSED*

LOCATION TO NEAREST

PROPERTY OR LEASE LINE, FT.

(Also to nearest drlg. unit line, if any)

1025'

18. DISTANCE FROM PROPOSED LOCATION*

TO NEAREST WELL, DRILLING, COMPLETED,
OR APPLIED FOR, ON THIS LEASE, FT.

300'

16. NO. OF ACRES IN LEASE

1088.20

19. PROPOSED DEPTH

1650'

17. NO. OF ACRES ASSIGNED
TO THIS WELL

130.49

20. ROTARY OR CABLE TOOLS

Rotary

21. ELEVATIONS (Show whether DF, RT, GR, etc.)

5470 GR

22. APPROX. DATE WORK WILL START*

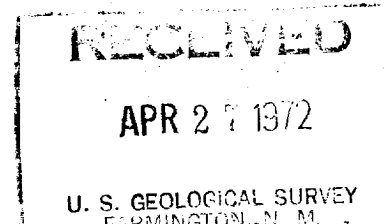
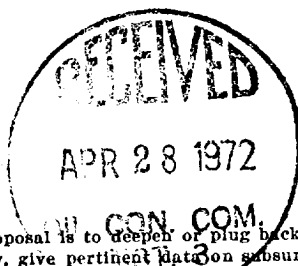
May 3, 1972

23.

PROPOSED CASING AND CEMENTING PROGRAM

SIZE OF HOLE	SIZE OF CASING	WEIGHT PER FOOT	SETTING DEPTH	QUANTITY OF CEMENT
8 3/4"	7 "	20#	65'	25 s.
6 1/4"	4 1/2"	9.5#	1650'	150 s.

Plan to mud drill through Pictured Cliffs Formation and
set production casing through productive zone, perforate
casing, stimulate well by fracing, run tubing and test well.



IN ABOVE SPACE DESCRIBE PROPOSED PROGRAM: If proposal is to deepen or plug back, give data on present productive zone and proposed new productive zone. If proposal is to drill or deepen directionally, give pertinent data on subsurface locations and measured and true vertical depths. Give blowout preventer program, if any.

24.

SIGNED

W M Gallaway

TITLE

Operator

DATE April 27, 1972

(This space for Federal or State office use)

PERMIT NO.

APPROVAL DATE

APPROVED BY

TITLE

DATE

CONDITIONS OF APPROVAL, IF ANY:

issue NWJ.

*See Instructions On Reverse Side

NEW MEXICO OIL CONSERVATION COMMISSION WELL LOCATION AND ACERAGE DEDICATION PLAT

All distances must be from the outer boundaries of the Section

Operator W. M. GALLAWAY			Lease DeLo		Well No. 4
Unit Letter N	Section 10	Township 28 NORTH	Range 11 WEST	County SAN JUAN	
Actual Footage Location of Well: <div style="display: flex; justify-content: space-between;"> 1025 feet from the SOUTH line and 1850 feet from the WEST line </div>					
Ground Level Elev. 5470.0	Producing Formation Pictured Cliffs	Pool Fulcher Kutz	Dedicated Acreage: 130.49 Acres		

1. Outline the acreage dedicated to the subject well by colored pencil or hachure marks on the plat below.

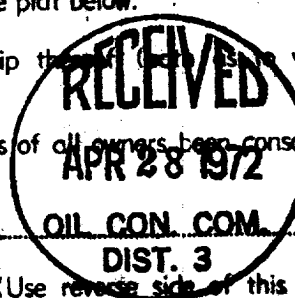
2. If more than one lease is dedicated to the well, outline each and identify the ownership thereof (if not a working interest and royalty),

3. If more than one lease of different ownership is dedicated to the well, have the interests of all owners been consolidated by communitization, unitization, force-pooling, etc?

() Yes () No If answer is "yes," type of consolidation _____

If answer is "no," list the owners and tract descriptions which have actually consolidated. (Use reverse side of this form if necessary.) _____

No allowable will be assigned to the well until all interests have been consolidated (by communitization, unitization, forced-pooling, or otherwise) or until a non standard unit, eliminating such interests, has been approved by the Commission.



CERTIFICATION

I hereby certify that the information contained herein is true and complete to the best of my knowledge and belief.

W. M. Gallaway
Name

W. M. Gallaway

Position

Operator

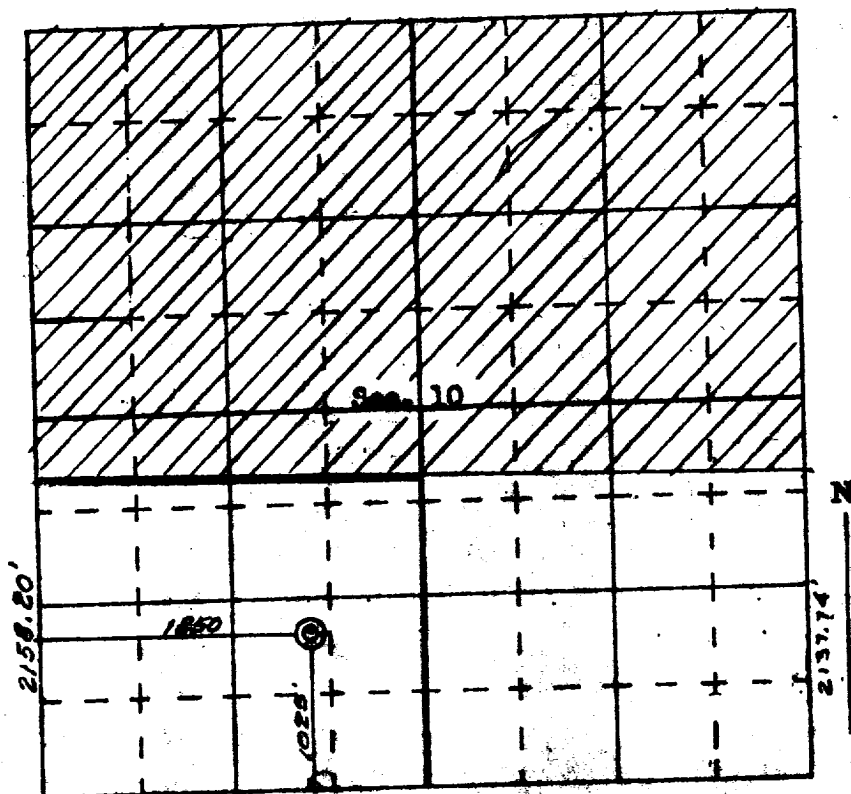
Company

W. M. Gallaway

Date

April 27, 1972

I hereby certify that the well location shown on this plat was plotted from field notes of actual surveys made by me or under my supervision, and that the same is true and correct to the best of my knowledge and belief.



SCALE—4 INCHES EQUALS 1 MILE

SAN JUAN ENGINEERING COMPANY, FARMINGTON, N. M.