

NEW 10-2-72
WELL LOCATION AND ACREAGE DEDICATION PLAT

102
Supersedes C-128
Effective 1-4-65

All distances must be from the outer boundaries of the Section.

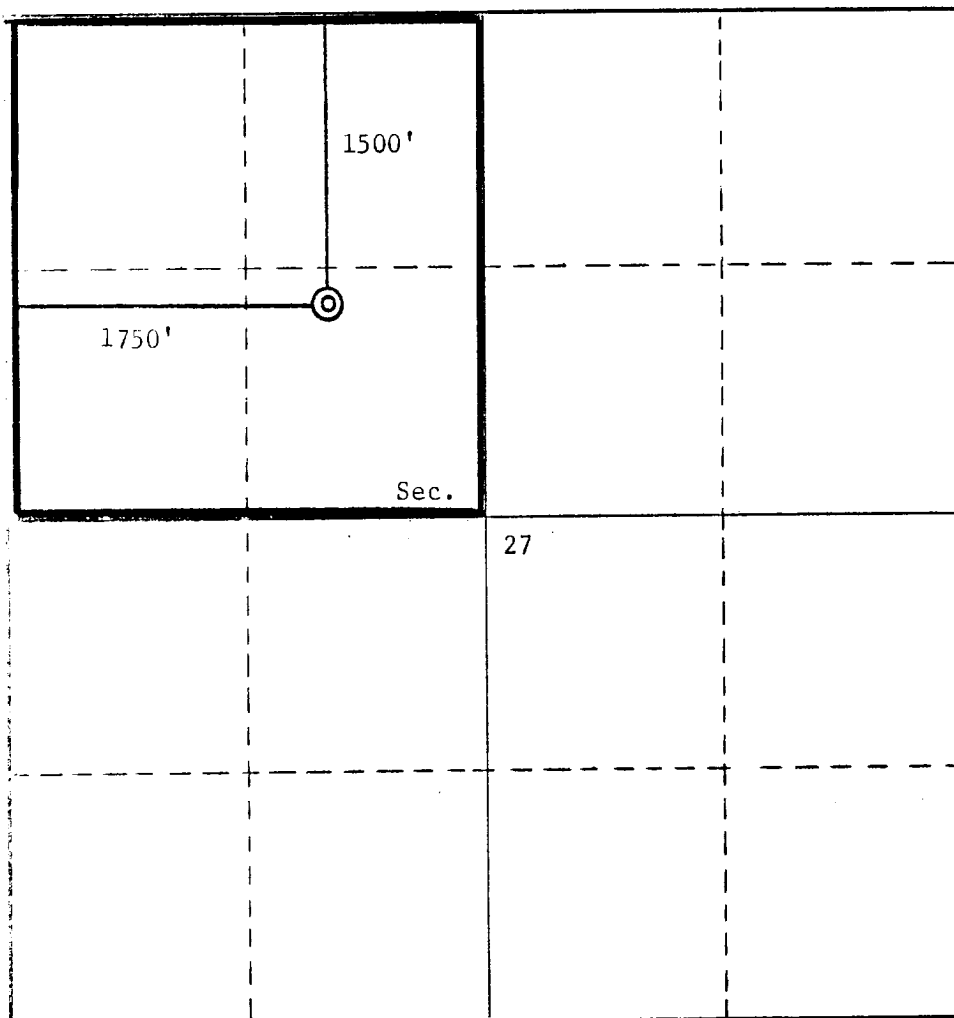
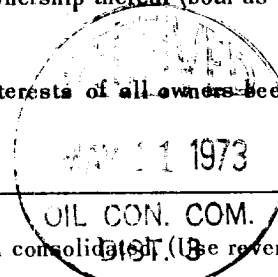
Operator AMOCO PRODUCTION COMPANY		Lease Kutz Deep Test "C"		Well No. 2
Unit Letter F	Section 27	Township 28N	Range 10W	County San Juan
Actual Location of Well: 1500 feet from the North line and 1750 feet from the West line				
Ground Level Elev: 5960' ungr.	Producing Formation Fruitland	Pool Undesignated	Dedicated Acreage: 160 Acres	

- Outline the acreage dedicated to the subject well by colored pencil or hatchure marks on the plat below.
- If more than one lease is dedicated to the well, outline each and identify the ownership thereof (both as to working interest and royalty).
- If more than one lease of different ownership is dedicated to the well, have the interests of all owners been consolidated by communitization, unitization, force-pooling, etc?

☐ Yes ☐ No If answer is "yes," type of consolidation _____

If answer is "no," list the owners and tract descriptions which have actually been consolidated (on the reverse side of this form if necessary.) _____

No allowable will be assigned to the well until all interests have been consolidated (by communitization, unitization, forced-pooling, or otherwise) or until a non-standard unit, eliminating such interests, has been approved by the Commission.



CERTIFICATION

I hereby certify that the information contained herein is true and complete to the best of my knowledge and belief.

Name
L. O. Speer, Jr.
Position
Area Superintendent
Company
AMOCO PRODUCTION COMPANY
Date
May 9, 1973

I hereby certify that the well location shown on this plat was plotted from field notes of actual surveys made by me or under my supervision, and that the same is true and correct to the best of my knowledge and belief.

Date Surveyed
September 23, 1972
Registered Professional Engineer
and/or Land Surveyor
Original signed by:
Fred B. Kerr, Jr.

Certificate No.
3950

