

UNITED STATES
DEPARTMENT OF THE INTERIOR
GEOLOGICAL SURVEY

30-0-15-2414

5. LEASE DESIGNATION AND SERIAL NO.

NM 013365

6. IF INDIAN, ALLOTTEE OR TRIBE NAME

7. UNIT AGREEMENT NAME

8. FARM OR LEASE NAME

Ivy

9. WELL NO.

1

10. FIELD AND POOL, OR WILDCAT

Undesignated

11. SEC., T., R., M., OR BLK.
AND SURVEY OR AREA

Sec. 16, T28N, R11W

12. COUNTY OR PARISH 13. STATE

San Juan

N.M.

1a. TYPE OF WORK

DRILL ☒

DEEPEN ☐

PLUG BACK ☐

b. TYPE OF WELL

OIL
WELL ☒

GAS
WELL ☐

OTHER

SINGLE
ZONE ☐

MULTIPLE
ZONE ☐

2. NAME OF OPERATOR

Dugan Production Corp.

3. ADDRESS OF OPERATOR

P. O. Box 234, Farmington, New Mexico 87401

4. LOCATION OF WELL (Report location clearly and in accordance with any State requirements.)*

At surface

600' FNL - 1720' FEL

At proposed prod. zone

14. DISTANCE IN MILES AND DIRECTION FROM NEAREST TOWN OR POST OFFICE*

2 1/2 miles south Bloomfield, New Mexico

15. DISTANCE FROM PROPOSED*

LOCATION TO NEAREST
PROPERTY OR LEASE LINE, FT.
(Also to nearest drlg. unit line, if any)

330'

16. NO. OF ACRES IN LEASE

17. NO. OF ACRES ASSIGNED
TO THIS WELL

40

18. DISTANCE FROM PROPOSED LOCATION*
TO NEAREST WELL, DRILLING, COMPLETED,
OR APPLIED FOR, ON THIS LEASE, FT.

None

19. PROPOSED DEPTH

750'

20. ROTARY OR CABLE TOOLS

Rotary

21. ELEVATIONS (Show whether DF, RT, GR, etc.)

5506' GR

22. APPROX. DATE WORK WILL START*

2-15-74

23.

PROPOSED CASING AND CEMENTING PROGRAM

SIZE OF HOLE	SIZE OF CASING	WEIGHT PER FOOT	SETTING DEPTH	QUANTITY OF CEMENT
8-3/4"	7"	20#	60'	20 sacks
6-1/4"	4-1/2"	10.5#	750'	75 sacks

Drill well with mud to evaluate the Farmington formation. If productive, set casing through sand, perforate, frac, clean out, and put well on pump.



IN ABOVE SPACE DESCRIBE PROPOSED PROGRAM: If proposal is to deepen or plug back, give data on present productive zone and proposed new productive zone. If proposal is to drill or deepen directionally, give pertinent data on subsurface locations and measured and true vertical depths. Give blowout preventer program, if any.

24.

Original signed by T. A. Dugan

SIGNED Thomas A. Dugan

TITLE Engineer

DATE 1-11-74

(This space for Federal or State office use)

PERMIT NO.

APPROVAL DATE

APPROVED BY

TITLE

DATE

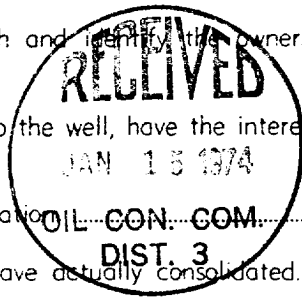
CONDITIONS OF APPROVAL, IF ANY:

**NEW MEXICO OIL CONSERVATION COMMISSION
WELL LOCATION AND ACERAGE DEDICATION PLAT**

All distances must be from the outer boundaries of the Section

Operator Dugan Production Corporation			Lease Ivy		Well No. 1
Unit Letter B	Section 16	Township 28 North	Range 11 West	County San Juan	
Actual Footage Location of Well: <div style="display: flex; justify-content: space-between;"> 600 feet from the North line and 1720 feet from the East line </div>					
Ground Level Elev. 5506	Producing Formation Farmington		Pool Undesignated		Dedicated Acreage: 40 Acres

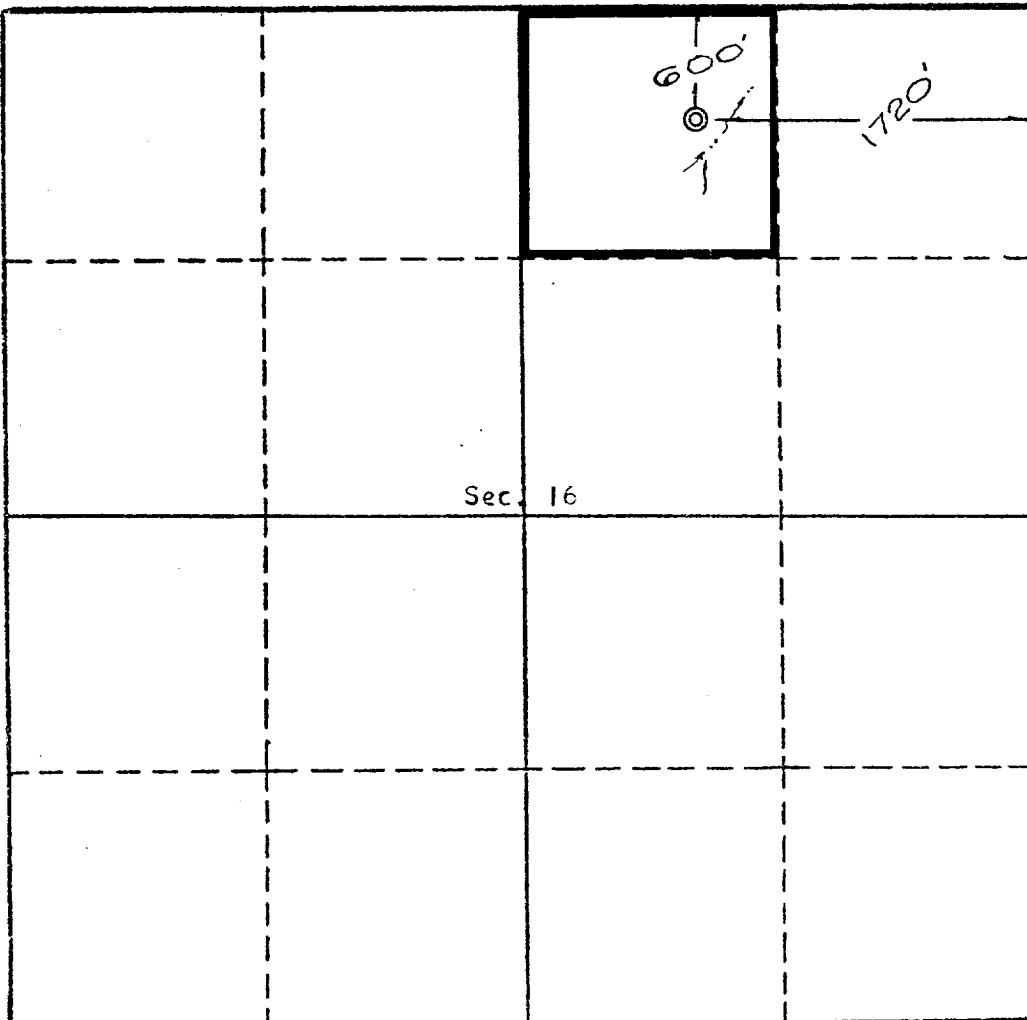
1. Outline the acreage dedicated to the subject well by colored pencil or hachure marks on the plat below.
2. If more than one lease is dedicated to the well, outline each and identify the ownership thereof (both as to working interest and royalty),
3. If more than one lease of different ownership is dedicated to the well, have the interests of all owners been consolidated by communitization, unitization, force-pooling, etc?



() Yes () No If answer is "yes," type of consolidation.....

If answer is "no," list the owners and tract descriptions which have actually consolidated. (Use reverse side of this form if necessary.)

No allowable will be assigned to the well until all interests have been consolidated (by communitization, unitization, forced-pooling, or otherwise) or until a non standard unit, eliminating such interests, has been approved by the Commission.



Scale, 1 inch = 1,000 feet

CERTIFICATION

I hereby certify that the information contained herein is true and complete to the best of my knowledge and belief.

Original signed by I. A. Dugan

Name
Thomas A. Dugan
Position
Engineer
Company
Dugan Production Corp.
Date
1-11-74

I hereby certify that the well location shown on this plat was plotted from field notes of actual surveys made by me or under my supervision, and that the same is true and correct to the best of my knowledge and belief.

NEW MEXICO
3602

Date Surveyed
January 8, 1973
Registered Professional Engineer
and/or Land Surveyor

E. V. Echhawk
Certificate No. 3602
E. V. Echhawk LS