

30-045-21928

UNITED STATES  
DEPARTMENT OF THE INTERIOR  
GEOLOGICAL SURVEY

## APPLICATION FOR PERMIT TO DRILL, DEEPEN, OR PLUG BACK

## 1a. TYPE OF WORK

DRILL ☒DEEPEN ☐PLUG BACK ☐

## b. TYPE OF WELL

OIL  
WELL ☐GAS  
WELL ☒OTHER ☐SINGLE  
ZONE ☐MULTIPLE  
ZONE ☐

## 2. NAME OF OPERATOR

Curtis J. Little

## 3. ADDRESS OF OPERATOR

142 Truman NE, Suite A, Albuquerque, New Mexico 87108

## 4. LOCATION OF WELL (Report location clearly and in accordance with any State requirements.)\*

At surface

910'FNL, 1700'FEL

At proposed prod. zone

Same

## 14. DISTANCE IN MILES AND DIRECTION FROM NEAREST TOWN OR POST OFFICE\*

3 1/2 miles SW of Bloomfield

## 15. DISTANCE FROM PROPOSED\*

LOCATION TO NEAREST  
PROPERTY OR LEASE LINE, FT.  
(Also to nearest drlg. unit line, if any)

910 feet

## 18. DISTANCE FROM PROPOSED LOCATION\*

TO NEAREST WELL, DRILLING, COMPLETED,  
OR APPLIED FOR, ON THIS LEASE, FT.

2590 feet

## 16. NO. OF ACRES IN LEASE

1800

## 19. PROPOSED DEPTH

1400

## 17. NO. OF ACRES ASSIGNED

TO THIS WELL  
160 acres (NE/4) ✓

## 20. ROTARY OR CABLE TOOLS

Rotary

## 21. ELEVATIONS (Show whether DF, RT, GR, etc.)

5617 CR

## 22. APPROX. DATE WORK WILL START\*

11-1-75

## 23.

## PROPOSED CASING AND CEMENTING PROGRAM

SIZE OF HOLE	SIZE OF CASING	WEIGHT PER FOOT	SETTING DEPTH	QUANTITY OF CEMENT
10 3/4"	7 5/8"	24#	60'	30 sx
6 1/4"	2 7/8"	4.7#	1400'	150 sx

Well will be drilled by rotary, logs run and if commercial, new 2 7/8" casing will be set, cemented, perforated and frac'd.



RECEIVED

NOV 7 1975

U. S. GEOLOGICAL SURVEY  
FARMINGTON, N. M.

IN ABOVE SPACE DESCRIBE PROPOSED PROGRAM: If proposal is to deepen or plug back, give data on present productive zone and proposed new productive zone. If proposal is to drill or deepen directionally, give pertinent data on subsurface locations and measured and true vertical depths. Give blowout preventer program, if any.

## 24.

SIGNED

TITLE

Operator

DATE

10-27-75

(This space for Federal or State office use)

PERMIT NO.

APPROVAL DATE

APPROVED BY

TITLE

DATE

CONDITIONS OF APPROVAL, IF ANY:

NEW MEXICO OIL CONSERVATION COMMISSION  
WELL LOCATION AND ACREAGE DEDICATION PLAT

Form O-102  
Supersedes C-128  
Effective 1-1-65

All distances must be from the outer boundaries of the Section

Operator <b>CURTIS J. LITTLE</b>		Lease <b>USA - Gentle</b>		Well No. <b>1</b>
Unit Letter <b>B</b>	Section <b>17</b>	Township <b>28 NORTH</b>	Range <b>11 WEST</b>	County <b>SAN JUAN</b>
Actual For Use Location of Well:				
<b>910</b> feet from the <b>NORTH</b> line and		<b>1700</b> feet from the <b>EAST</b> line		
Ground Level Elev. <b>5617</b>	Producing Formation <b>FRUITLAND SAND</b>	Pool <b>Pinon Fruitland</b>	Section <b>NE 1/4 160</b>	

- Outline the acreage dedicated to the subject well by colored pencil or hatchure marks on the plat below.
- If more than one lease is dedicated to the well, identify the ownership thereof (both as to working interest and royalty).
- If more than one lease of different ownership is dedicated to the well, have the interests of all owners been consolidated by communitization, unitization, forced pooling, or otherwise?

☐ Yes ☐ No

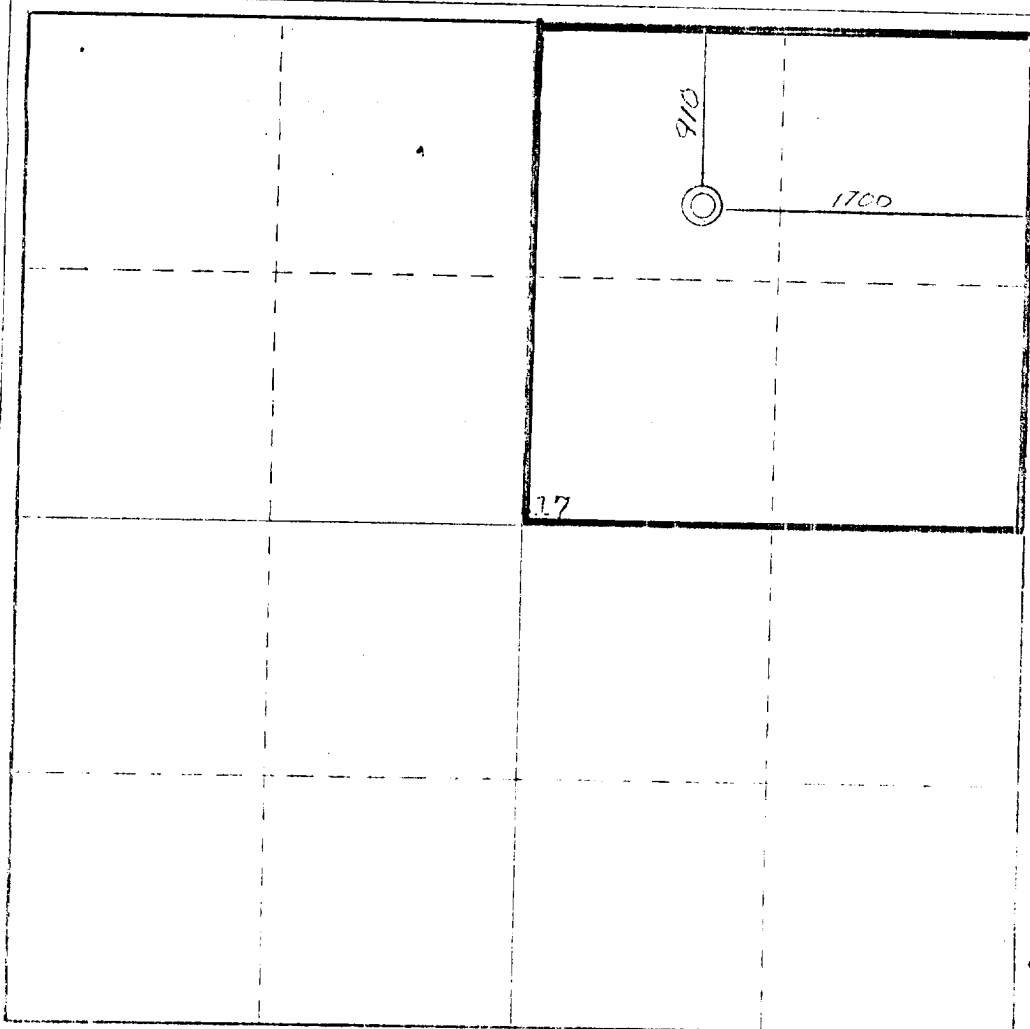
If answer is "yes," type or consolidation

**OIL CON. COM. DIST 3**

**One lease**

If answer is "no," list the owners and tract descriptions which have actually been consolidated. (Use reverse side of this form if necessary.)

No allowable will be assigned to the well until all interests have been consolidated (by communitization, unitization, forced-pooling, or otherwise) or until a non-standard unit, eliminating such interests, has been approved by the Commission.



CERTIFICATION

I hereby certify that the information contained herein is true and complete to the best of my knowledge and belief.

**Curtis J. Little**

**Operator**

**Individual**

**October 27, 1975**

I hereby certify that the well location shown on this plat was plotted in the field and that the same is correct and true to the best of my knowledge and belief.

**17 October 1975**

*James P. Leese*

**James P. Leese**

**1453**

Scale: 1" = 400' (0, 600, 900, 1200, 1600, 1900, 2300, 2600, 2900, 3200)