

NEW MEXICO OIL CONSERVATION COMMISSION
WELL LOCATION AND ACREAGE DEDICATION PLAT

Form O-10,
Supersedes O-12a
Effective 1-1-63

All distances must be from the outer boundaries of the Section.

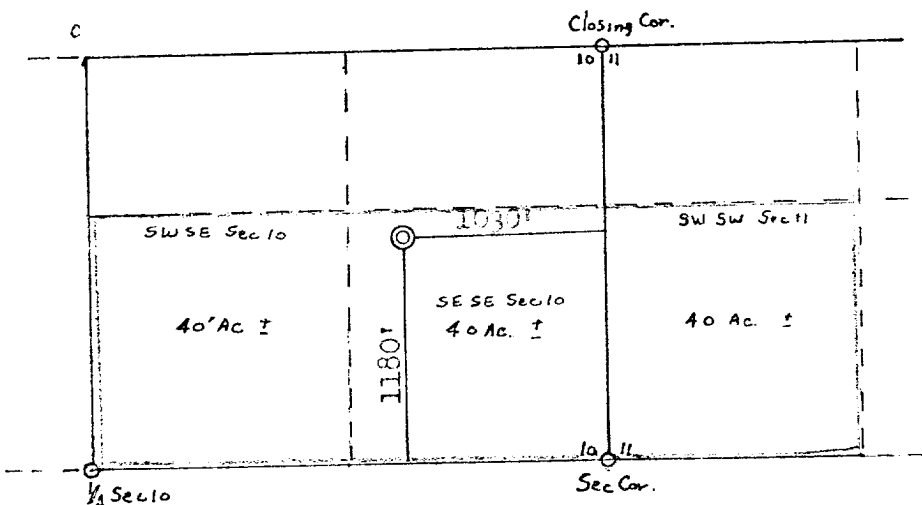
Operator Southland Royalty Company			Lease Browning-Stewart		Well No. 5
Unit Letter P	Section 10	Township 23N	Range 11W	County San Juan	
Actual Footage Location of Well: 1180 feet from the South line and 1030 feet from the East line					
Ground Level Elev: 5539'	Producing Formation Pictured Cliffs		Pool Fulcher Kutz	Dedicated Acreage: 120 Acres	

1. Outline the acreage dedicated to the subject well by colored pencil or hachure marks on the plat below.
2. If more than one lease is dedicated to the well, outline each and identify the ownership thereof (both as to working interest and royalty).
3. If more than one lease of different ownership is dedicated to the well, have the interests of all owners been consolidated by communitization, unitization, force-pooling, etc?

☐ Yes ☐ No If answer is "yes," type of consolidation _____

If answer is "no," list the owners and tract descriptions which have actually been consolidated. (Use reverse side of this form if necessary.) _____

No allowable will be assigned to the well until all interests have been consolidated (by communitization, unitization, forced-pooling, or otherwise) or until a non-standard unit, eliminating such interests, has been approved by the Commission.



SCALE: 1"=1000'

PLEASE NOTE: This plat issued to show a change in the allotted acreage

CERTIFICATION

I hereby certify that the information contained herein is true and complete to the best of my knowledge and belief.

Name _____

Position
District Production Manager

Company
Southland Royalty Company

Date
April 17, 1978

I hereby certify that the well location shown on this plat was plotted from field notes of actual surveys made by me or under my supervision, and that the same is true and correct to the best of my knowledge and belief.

Date Surveyed
April 16, 1978

Registered Professional Engineer
and Land Surveyor

Fred B. Kern Jr.
Fred B. Kern Jr.

Certificate No.
2050