

UNITED STATES  
DEPARTMENT OF THE INTERIOR  
GEOLOGICAL SURVEY

## APPLICATION FOR PERMIT TO DRILL, DEEPEN, OR PLUG BACK

## 1a. TYPE OF WORK

DRILL ☒DEEPEN ☐PLUG BACK ☐

## b. TYPE OF WELL

OIL  
WELL ☐GAS  
WELL ☒OTHER ☐SINGLE  
ZONE ☒MULTIPLE  
ZONE ☐

## 2. NAME OF OPERATOR

Supron Energy Corporation

## 3. ADDRESS OF OPERATOR

P.O. Box 808, Farmington, New Mexico 87401

## 4. LOCATION OF WELL (Report location clearly and in accordance with any State requirements.\*)

At surface

790'S; 2110'E Line

At proposed prod. zone

Same as above

## 14. DISTANCE IN MILES AND DIRECTION FROM NEAREST TOWN OR POST OFFICE\*

3 Miles Southeast of Bloomfield, New Mexico

## 15. DISTANCE FROM PROPOSED\*

LOCATION TO NEAREST  
PROPERTY OR LEASE LINE, FT.  
(Also to nearest drig. unit line, if any)

790'

790'

## 18. DISTANCE FROM PROPOSED LOCATION\*

TO NEAREST WELL, DRILLING, COMPLETED,  
OR APPLIED FOR, ON THIS LEASE, FT.

1219

## 16. NO. OF ACRES IN LEASE

402.34

## 19. PROPOSED DEPTH

1800'

17. NO. OF ACRES ASSIGNED  
TO THIS WELL

190.89

## 20. ROTARY OR CABLE TOOLS

Rotary

## 21. ELEVATIONS (Show whether DF, RT, GR, etc.)

5749 GR

## 22. APPROX. DATE WORK WILL START\*

11/15/79

## 23.

## PROPOSED CASING AND CEMENTING PROGRAM

SIZE OF HOLE	SIZE OF CASING	WEIGHT PER FOOT	SETTING DEPTH	QUANTITY OF CEMENT
9-7/8"	7-5/8"	20.00#	200 *	125 Sx.
6-3/4"	2-7/8"	6.50#	1800	200 Sx.

\* Or set 70' of surface casing & cement up through Ojo Alamo when setting production casing & verify cement top by log or if plugging well, spot plug across Ojo Alamo.

We propose to drill a 9-7/8" surface hole to approx. 200 ft. and run new 7-5/8", 20.00#, H-40 casing to T.D. and cement to surface with about 125 sacks of class "B" with 2% Ca Cl. A 6-3/4" hole will be drilled with mud through the Fruitland zone to approx. 1800 ft. new 2-7/8", 6.50#, EUE, J-55 tubing will be used as production casing and set at about 1800 ft. It will be cemented with about 200 sacks of class "B" with 1/4# of Celio Flakes per sack. The well will be perforated and stimulated in the Fruitland zone and produced through the 2-7/8" tubing. No additional tubing will be run at the present time.

This well will be drilled on acreage dedicated to a gas transporter.

IN ABOVE SPACE DESCRIBE PROPOSED PROGRAM: If proposal is to deepen or plug back, give data on present productive zone and proposed new productive zone. If proposal is to drill or deepen directionally, give pertinent data on subsurface locations and measured and true vertical depth and blowout preventer program, if any.

## 24.

SIGNED

Kenneth E. Roddy

TITLE

Production Superintendent

DATE

AUG 8, 1979  
OIL CON. COM.  
DIST. 3

(This space for Federal or State office use)

PERMIT NO.

APPROVAL DATE

APPROVED BY

TITLE

DATE

CONDITIONS OF APPROVAL, IF ANY:

ok Frank

NMOC

NEW MEXICO OIL CONSERVATION COMMISSION  
WELL LOCATION AND ACREAGE DEDICATION PLAT

Supersedes C-128  
Effective 1-1-65

All distances must be from the outer boundaries of the Section.

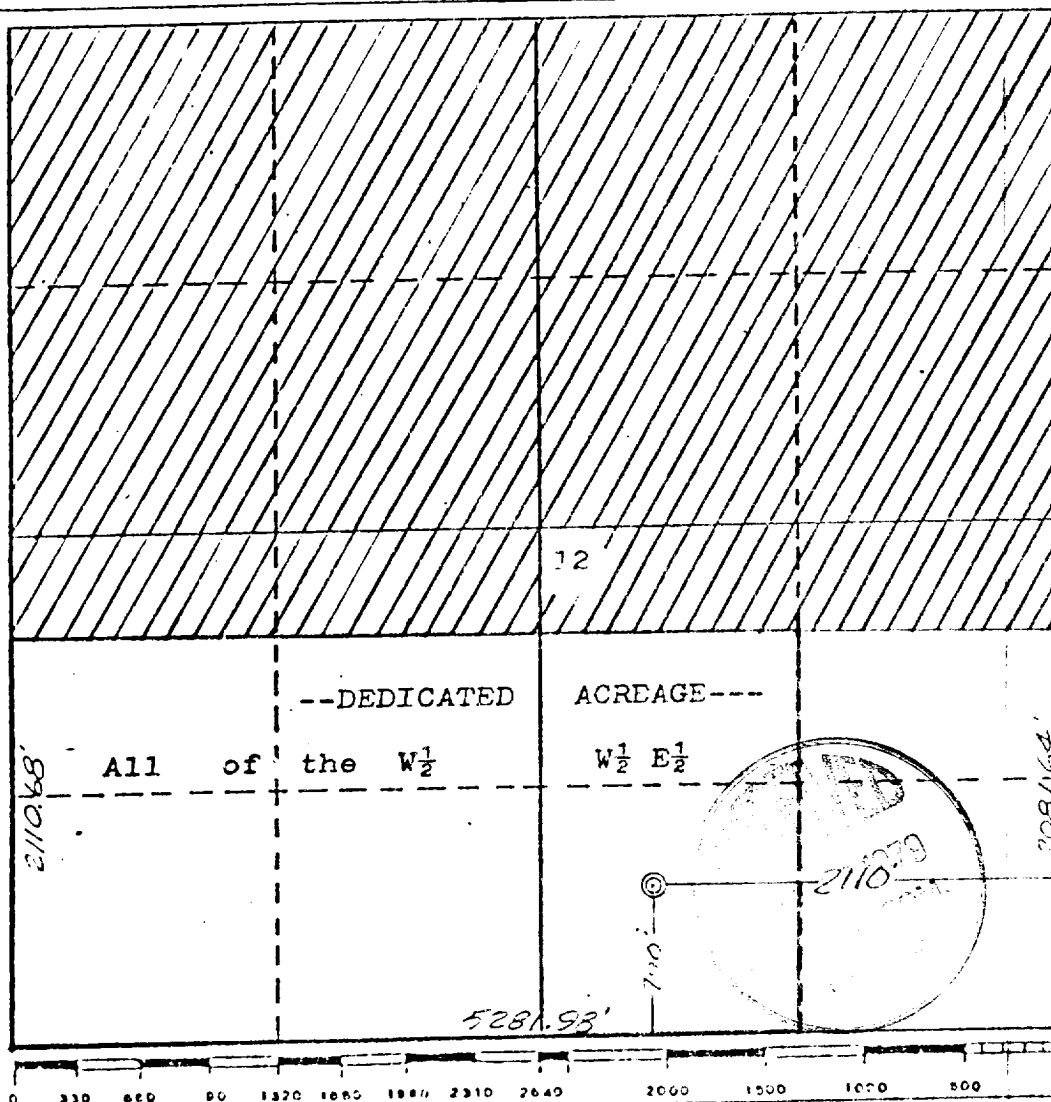
Operator <b>SUPRON ENERGY CORPORATION</b>			Lease <b>ANGEL PEAK</b>		Well No. <b>20</b>
Unit Letter <b>0</b>	Section <b>12</b>	Township <b>28 NORTH</b>	Range <b>11 WEST</b>	County <b>SAN JUAN</b>	
Actual Footage Location of Well: <b>790</b> feet from the <b>SOUTH</b> line and <b>2110</b> feet from the <b>EAST</b> line					
Ground Level Elev. <b>5749</b>	Producing Formation <b>FRUITLAND EXTENSION</b>		Pool <b>KUTZ</b>	Dedicated Acreage: <b>190.89</b> Acres	

1. Outline the acreage dedicated to the subject well by colored pencil or hachure marks on the plat below.
2. If more than one lease is dedicated to the well, outline each and identify the ownership thereof (both as to working interest and royalty).
3. If more than one lease of different ownership is dedicated to the well, have the interests of all owners been consolidated by communitization, unitization, force-pooling, etc?

☐ Yes ☐ No If answer is "yes," type of consolidation \_\_\_\_\_

If answer is "no," list the owners and tract descriptions which have actually been consolidated. (Use reverse side of this form if necessary.) \_\_\_\_\_

No allowable will be assigned to the well until all interests have been consolidated (by communitization, unitization, forced-pooling, or otherwise) or until a non-standard unit, eliminating such interests, has been approved by the Commission.



CERTIFICATION

I hereby certify that the information contained herein is true and complete to the best of my knowledge and belief.

**Rudy D. Motto**

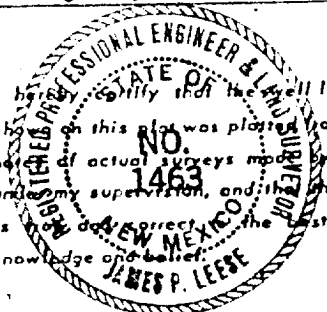
Name  
*Rudy D. Motto*

Position  
**Area Superintendent**

Company  
**Supron Energy Corporation**

Date  
**July 13, 1979**

I hereby certify that the well location shown on this plat was plotted from field notes of actual surveys made by me or under my supervision, and that the same is true and correct to the best of my knowledge and belief.



Date Surveyed  
**11 July 1979**

Registered Professional Engineer and Land Surveyor  
*James P. Leese*  
**James P. Leese**

Certificate No.  
**1463**

SUPRON ENERGY CORPORATION

ANGEL PEAK NO. 20

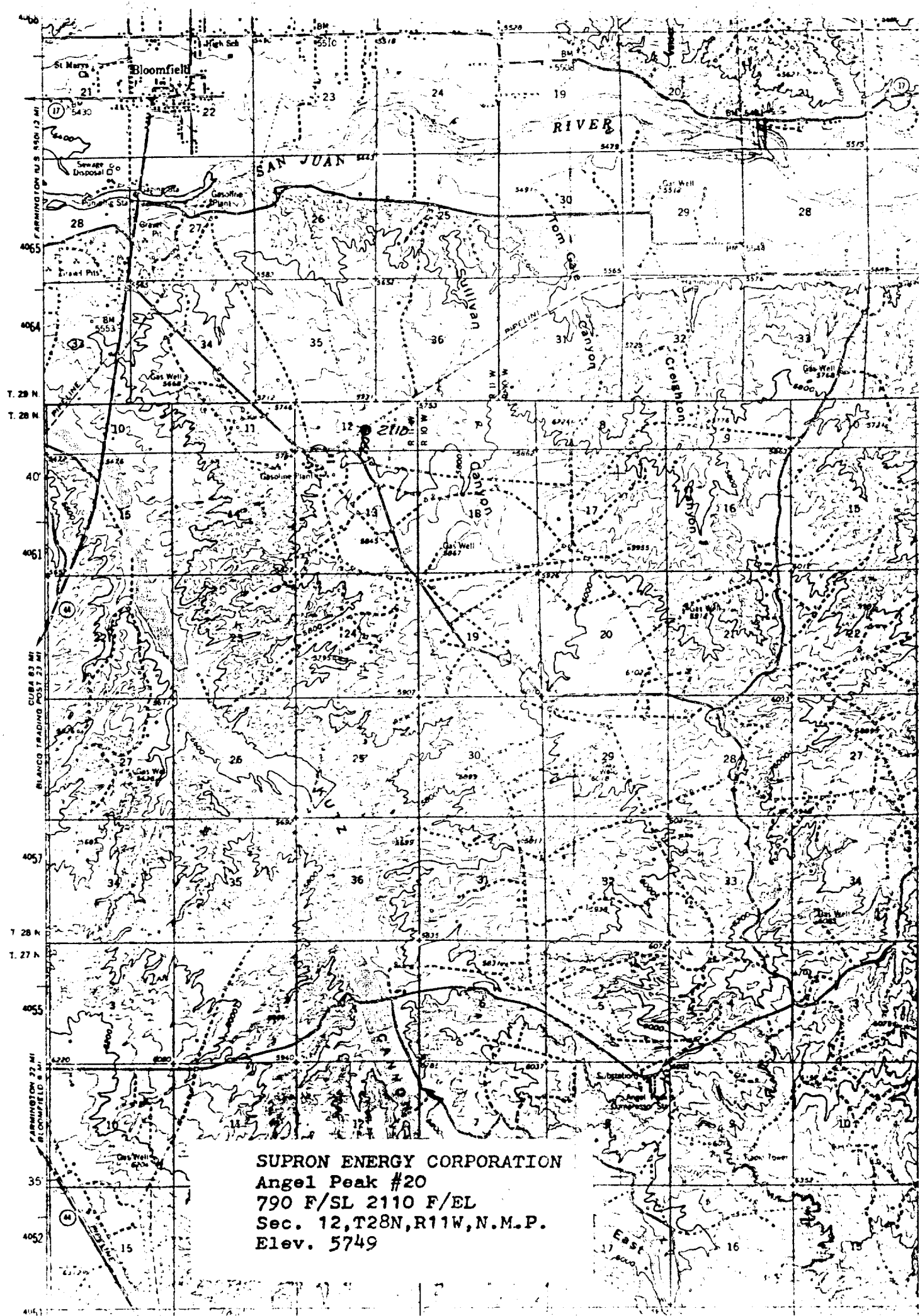
790'/S; 2110'/E Line

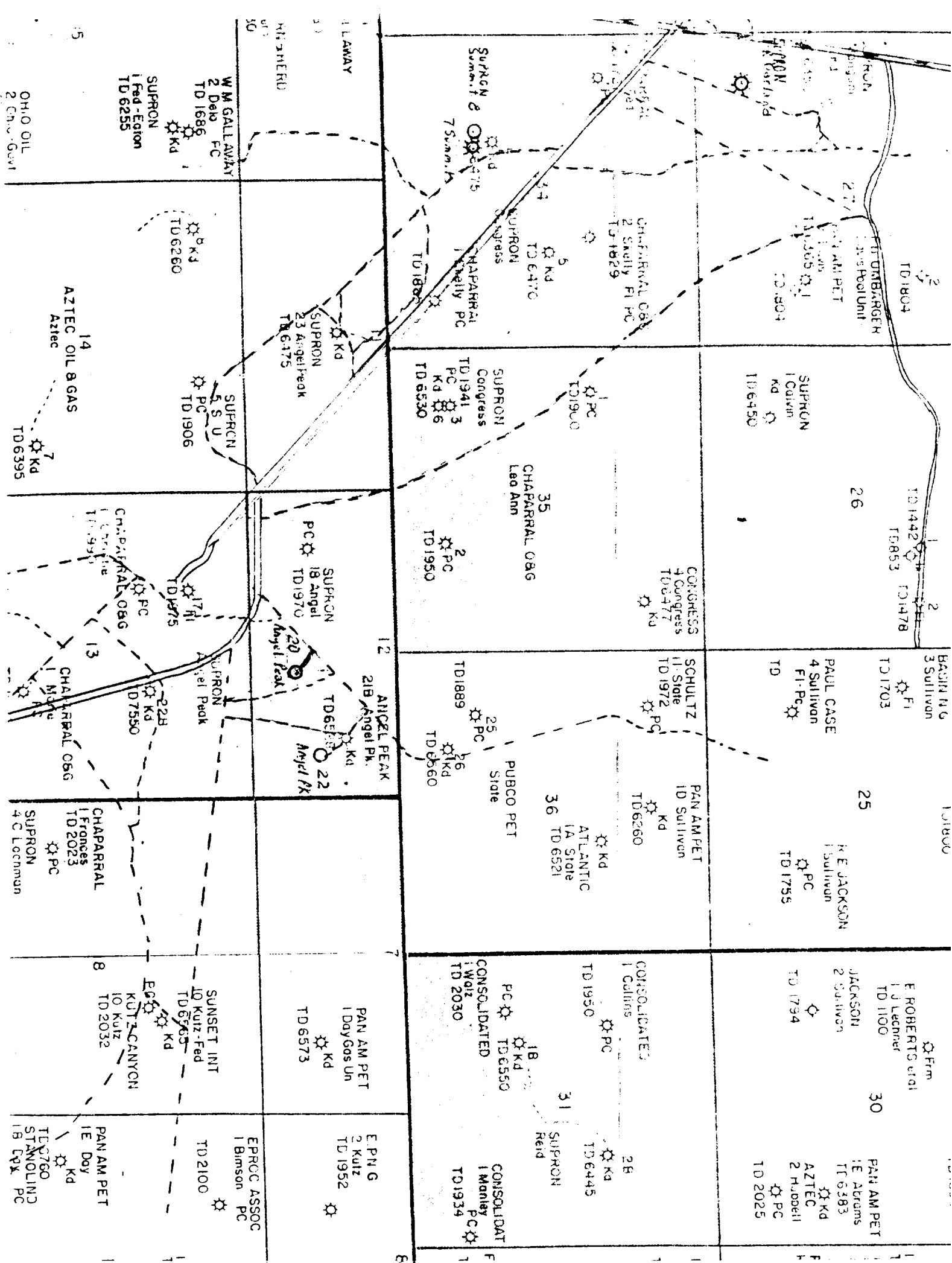
Sec. 12, T-28N, R-11W

San Juan County, New Mex.

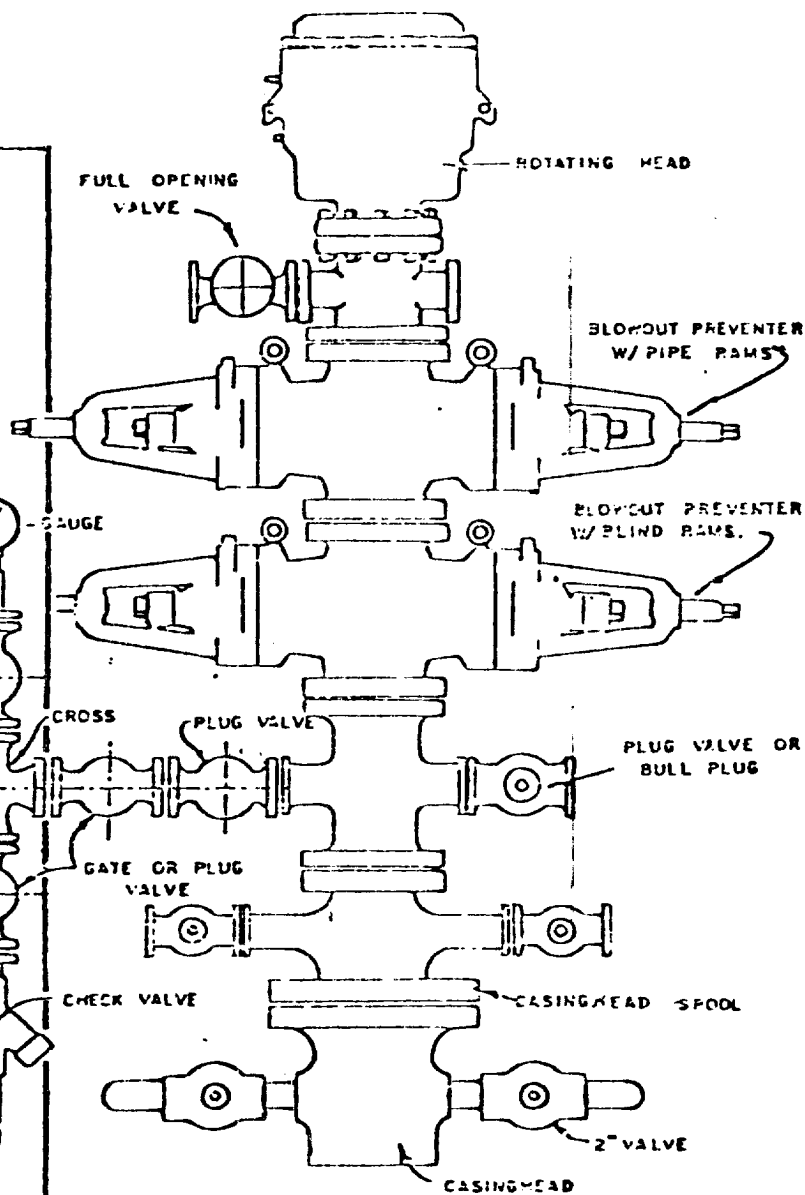
SUPPLEMENT TO FORM 9-331C

1. The Geologic name of the surface formation is "Wasatch".
2. The estimated tops of important Geologic markers are:
  - A. Base of Ojo Alamo - - - - - 1255
  - B. Top of Fruitland - - - - - 1600
3. The estimated depth at which anticipated water, oil, or other mineral - bearing formations are expected to be encountered are:
  - A. Base of Ojo Alamo - - - - - 1255 - - - Water
  - B. Top of Fruitland - - - - - 1600 - - - Gas
4. The casing program is shown on form 9-331C and all casing is new.
5. The lessee's pressure - control equipment schematics are attached, along with minimum specifications, testing procedures, and frequencies.
6. The type, estimated volumes, and characteristics of the circulating media are as follows:
  - A. 0 - 200 Feet - Natural mud.
  - B. 200 - 1800 Feet - Permaloid, non-dispersed mud containing 167 sx. gel, 67 sx. permaloid, and 10 sx. C.M.C.
7. The auxiliary equipment to be used will be floats at the bit and a sub on the floor with a full-opening valve to be stabbed into the drill pipe when the kelly is not in the string.
8. This well is in an area which is partially developed; therefore we will not have a testing and coring program. The logging program will be as follows:
  - A. E.S. Induction
  - B. Gamma Ray Density
  - C. Gamma Ray Correlation
  - D. Cement Bond Log
9. We do not expect to find any abnormal pressures, temperatures or hydrogen sulphide problems in this partially - developed area.
10. The anticipated starting date for this well is 11/15/79.

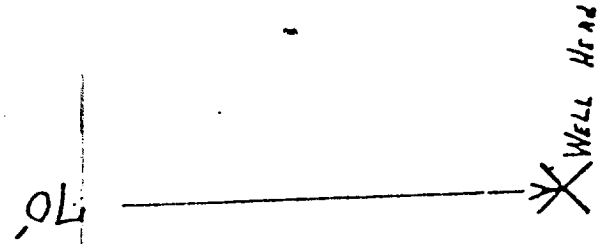
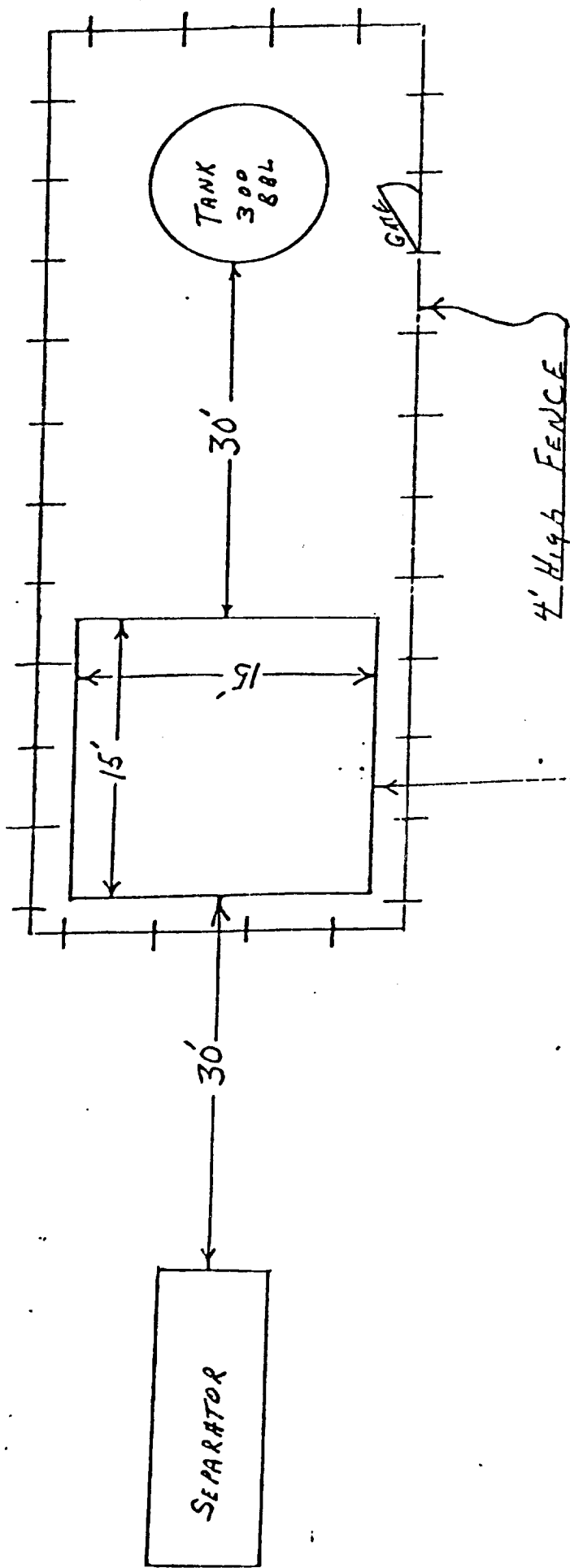




IS PORTION, OR ANY PART THEREOF,  
 Y BE PLACED OUTSIDE OF SUB-  
 STRUCTURE IF DESIRED. USE LONG  
 DIOUS ENDS. PIPE USED FOR  
 TENSION SHOULD BE SHOP MADE  
 IN NO SCREWED CONNECTIONS AND  
 BE TESTED INITIALLY TO SAME  
 ST PRESSURE AS THE CHOKE  
 WOULD.




BLOWOUT PREVENTER HOOKUP



**SUPRON ENERGY CORPORATION**  
Post Office Box 808  
FARMINGTON, NEW MEXICO 87401

I hereby certify that I, or persons under my direct supervision, have inspected the proposed drillsite and access route; that I am familiar with the conditions which presently exist; that the statements made in this plan are, to the best of my knowledge, true and correct; and, that the work associated with the operations proposed herein will be performed by SUPRON ENERGY CORPORATION and its contractors subcontractors in conformity with this plan and the terms and conditions under which it is approved.

SUPRON ENERGY CORPORATION

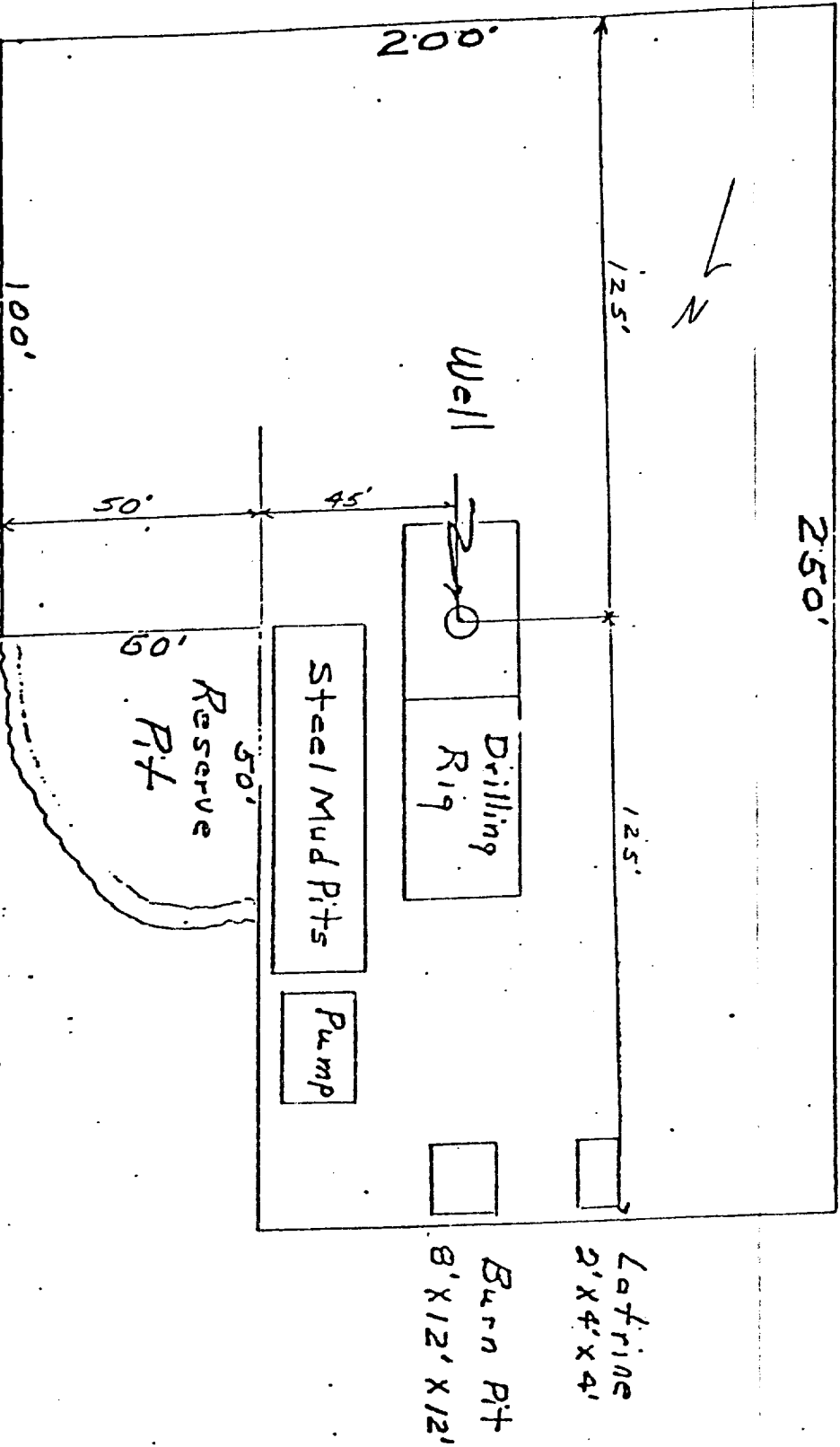


Rudy D. Motto  
Area Superintendent  
Phone: 325-3587

SUPRON ENERGY CORPORATION  
LOCATION AND EQUIPMENT LAYOUT

ANGEL PEAK NO. 20

790 Feet from the South line and 2110 feet from the East line of  
Section 12, Township 28 North, Range 11 West, N.M.P.M., San Juan  
County, New Mexico.



SUPRON ENERGY CORPORATION

ANGEL PEAK NO. 20

790'/S; 2110'/E Line  
Sec. 12, T-28N, R-11W  
San Juan County, N. Mex.

The following attachments are included with this application:

1. Topographical map showing proposed location and access road.
2. Planned access road is 100 feet long and will be no wider than 20 feet. The road will be on flat land and no drainage facilities should be necessary. No additional surfacing materials will be necessary.
3. Map showing existing producing facilities and access roads.
4. Location of surface equipment if required.
5. Drilling and completion water will be obtained from the San Juan River.
6. All pits will be fenced and constructed in such a way as to prevent litter on the location.
7. We will dispose of all waste by placing it in the reserve pit and burying it when the well is completed.
8. There will be no camp at or near the well site.
9. There will be no air strip.
10. A plat is attached showing the location of the rig, mud tanks, reserve pit, burn pit, etc.
11. A letter of certification is attached. The operator representative for compliance purposes is Rudy D. Motto, Area Superintendent, P.O. Box 808, Farmington, New Mexico 87401. Phone (505) 325-3587.
12. After the well is completed, the location will be cleaned up, and bladed. The reserve pit will be allowed to dry and then filled and restored to its natural state.
13. The soil is sandy loam with principal vegetation being Sagebrush, Pinon, and Juniper.