

UNITED STATES
DEPARTMENT OF THE INTERIOR
GEOLOGICAL SURVEY

30-044-23751
5. LEASE DESIGNATION AND SERIAL NO.

APPLICATION FOR PERMIT TO DRILL, DEEPEN, OR PLUG BACK

1a. TYPE OF WORK
DRILL ☒ DEEPEN ☐ PLUG BACK ☐

NM-03179
6. IF INDIAN, ALLOTTEE OR TRIBE NAME

b. TYPE OF WELL
OIL WELL ☐ GAS WELL ☒ OTHER ☐
SINGLE ZONE ☒ MULTIPLE ZONE ☐

7. UNIT AGREEMENT NAME

2. NAME OF OPERATOR
Southland Royalty Company

8. FARM OR LEASE NAME

3. ADDRESS OF OPERATOR
P. O. Drawer 570, Farmington, New Mexico

Aztec
9. WELL NO.

4. LOCATION OF WELL (Report location clearly and in accordance with any State requirements.)
At surface
1490' FNL & 1190' FEL
At proposed prod. zone

#8E
10. FIELD AND POOL, OR WILDCAT

Basin Dakota
11. SEC., T., R., M., OR BLK.
AND SURVEY OR AREA

14. DISTANCE IN MILES AND DIRECTION FROM NEAREST TOWN OR POST OFFICE*
3 miles South of Bloomfield, New Mexico

Section 14, T28N, R11W

12. COUNTY OR PARISH
San Juan
13. STATE
New Mexico

15. DISTANCE FROM PROPOSED*
LOCATION TO NEAREST
PROPERTY OR LEASE LINE, FT.
(Also to nearest drilg. unit line, if any) 1190'

16. NO. OF ACRES IN LEASE
480

17. NO. OF ACRES ASSIGNED
TO THIS WELL
320

18. DISTANCE FROM PROPOSED LOCATION*
TO NEAREST WELL, DRILLING, COMPLETED,
OR APPLIED FOR, ON THIS LEASE, FT. 985'

19. PROPOSED DEPTH
6467'

20. ROTARY OR CABLE TOOLS
Rotary

21. ELEVATIONS (Show whether DF, RT, GR, etc.)
5742' GR


22. APPROX. DATE WORK WILL START*
September 31, 1979

23. PROPOSED CASING AND CEMENTING PROGRAM

SIZE OF HOLE	SIZE OF CASING	WEIGHT PER FOOT	SETTING DEPTH	QUANTITY OF CEMENT
12-1/4"	8-5/8"	23#	200'	140 sxs (165 cu. ft.)
7-7/8"	5-1/2"	10.5#	6467'	289 sxs (431 cu. ft.) 1st Stage
				311 sxs (463 cu. ft.) 2nd Stage
				253 sxs (378 cu. ft.) 3rd Stage

Surface formation is Nacimiento.
Top of Ojo Alamo sand is at 649'.
Top of Pictured Cliffs sand is at 1796'.
Top of Cliff House sand is at 3344'.
Fresh water mud will be used to drill from surface to total depth.
It is anticipated that an IES log will be run from total depth to surface casing.
It is anticipated that a GR-Density will be run from total depth to top/Cliff House.
No abnormal pressures or poisonous gases are anticipated in this well.
It is expected that this well will be drilled before November 31, 1979. This depends
on time required for approvals, rig availability and the weather.
Gas is dedicated.

Dedicated Acreage: N/2 Section 14, T28N, R11W
IN ABOVE SPACE DESCRIBE PROPOSED PROGRAM: If proposal is to deepen or plug back, give data on present productive zone and proposed new productive zone. If proposal is to drill or deepen directionally, give pertinent data on subsurface locations and measured and true vertical depths. Give blowout preventer program, if any.

24. SIGNED  TITLE District Production Manager DATE August 23, 1979

(This space for Federal or State office use)

PERMIT NO. APPROVAL DATE

APPROVED BY TITLE DATE
CONDITIONS OF APPROVAL, IF ANY:

al Frank

NMOCK

*See Instructions On Reverse Side

OIL CONSERVATION DIVISION

P. O. BOX 2088

Form C-107
Revised 10-1-78STATE OF NEW MEXICO
ENERGY AND MINERALS DEPARTMENT

SANTA FE, NEW MEXICO 87501

All distances must be from the outer boundaries of the Section.

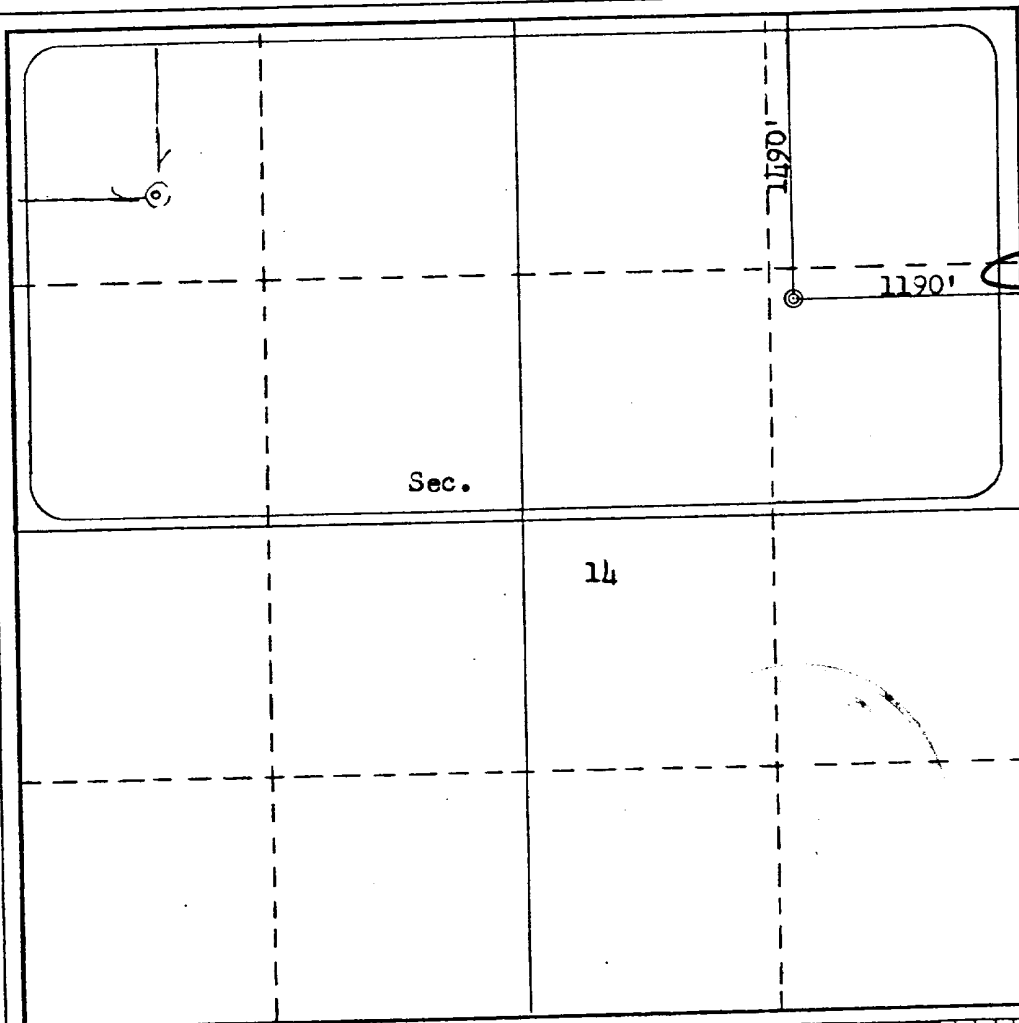
Operator SOUTHLAND ROYALTY COMPANY		Lease AZTEC		Well No. 8E	
Unit Letter H	Section 14	Township 28N	Range 11W	County San Juan	
Actual Footage Location of Well: 1490 feet from the North line and 1190 feet from the East line					
Ground Level Elev. 5742'	Producing Formation Dakota		Pool Basin Dakota		Dedicated Acreage: 320 Acres

1. Outline the acreage dedicated to the subject well by colored pencil or hatchure marks on the plat below.
2. If more than one lease is dedicated to the well, outline each and identify the ownership thereof (both as to working interest and royalty).
3. If more than one lease of different ownership is dedicated to the well, have the interests of all owners been consolidated by communitization, unitization, force-pooling, etc?

☐ Yes ☐ No If answer is "yes," type of consolidation _____

If answer is "no," list the owners and tract descriptions which have actually been consolidated. (Use reverse side of this form if necessary.) _____

No allowable will be assigned to the well until all interests have been consolidated (by communitization, unitization, forced-pooling, or otherwise) or until a non-standard unit, eliminating such interests, has been approved by the Commission.



CERTIFICATION

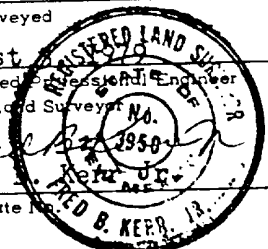
I hereby certify that the information contained herein is true and complete to the best of my knowledge and belief.

Name _____
Position
District Production Manager
Company
Southland Royalty Company
Date
August 23, 1979

I hereby certify that the well location shown on this plat was plotted from field notes of actual surveys made by me or under my supervision, and that the same is true and correct to the best of my knowledge and belief.

Date Surveyed

August 1979
Registered Professional Engineer
and/or Land Surveyor No. 1950
Fred B. Kepp
Certificate No. 3950



DRILLING SCHEDULE - Aztec #8E

LOCATION: 1490' FNL & 1190' FEL, Section 14, T28N, R11W, San Juan County, New Mexico

FIELD: Basin Dakota ELEVATION: 5742' GR TD: 6467'

GEOLOGY:

Formation Tops:

Ojo Alamo	649'	Gallup	5354'
Fruitland	1457'	Greenhorn	6134'
Pictured Cliffs	1796'	Graneros	6199'
Cliff House	3344'	Dakota	6317'
Point Lookout	4139'	Total depth	6467'

Logging Program: IES from total depth to surface casing.
GR-Density from total depth to top of Cliff House.

Coring Program: None

Natural Gauges: None

DRILLING:

Contractor:

SRC Representative:

Tool Pusher:

SRC Answering Service: 325-1841
Dispatch Number: 325-7391

Mud Program: Fresh water mud to top of Pt. Lookout. Pretreat gel mud with 10% LCM. Maintain mud weight at 9.0 to 9.2, Vis to 35 sec., Water Loss at 12 to 15.

MATERIALS:

Casing Program:	Hole Size	Depth	Casing Size	Wt. & Grade
	12-1/4"	200'	8-5/8"	24# K-55
	7-7/8"	6467'	5-1/2"	15.5# K-55

FLOAT EQUIPMENT:

8-5/8" Surface Casing: Pathfinder guide shoe.

5-1/2" Production Casing: Pathfinder guide shoe and Howco self-fill insert valve. Run 5 centralizers every other joint above shoe. Run Dowell stage tool at 4539' and 1996'. Run cement basket 1 joint below and 5 centralizers above each tool.

Wellhead Equipment: 8-5/8" X 10", 2000# Bradenhead with 5-1/2" casing hanger. 10" X 6", 2000# tubing head and tree.

DRILLING SCHEDULE - Aztec #8E

PAGE TWO

CEMENTING PROGRAM:

8-5/8" surface casing: $\frac{140}{\text{with } 1/4\# \text{ gel flake/sx and } 3\% \text{ CaCl. WOC for } 12 \text{ hrs. Test to } 600\# \text{ prior to drilling out. (Volume is } 100\% \text{ Excess)}}$ sxs or $\frac{165}{\text{cu. ft. of Class "B"}}$

5-1/2" Production String: Stage 1: $\frac{289}{50/50 \text{ Poz with } 6\% \text{ gel, } 1/4\# \text{ gel flake/sx and } 6\% \text{ Halad 9 or equivalent. (70\% Excess.)}}$ sxs or $\frac{431}{\text{cu. ft. of}}$

Stage 2: $\frac{311}{\text{same as Stage 1. (70\% Excess.)}}$ sxs or $\frac{463}{\text{cu. ft. of}}$

Stage 3: $\frac{253}{50/50 \text{ Poz with } 6\% \text{ gel (50\% excess) followed by } 70 \text{ sxs of Class "B" with } 2\% \text{ CaCl. If lost circulation occurred add } 1/4\# \text{ celloflakes per sack.}}$ sxs or $\frac{378}{\text{cu. ft. of}}$

WOC & Circulate between stages as required by well conditions.



Southland Royalty Company

United States Geological Survey
P. O. Box 959
Farmington, New Mexico 87401

Attention: Acting District Engineer

Dear Sir:

I hereby certify that I, or persons under my direct supervision, have inspected the proposed drillsite and access route; that I am familiar with the conditions which presently exist; that the statements made in this plan are, to the best of my knowledge, true and correct; and, that the work associated with the operations proposed herein be performed by Southland Royalty Company and its contractors and subcontractors in conformity with this plan and the terms and conditions under which it is approved.

Date: August 23, 1979

Name: 

Title: District Production Manager



Southland Royalty Company

August 23, 1979

United States Geological Survey
P. O. Box 959
Farmington, New Mexico

Attention: Acting District Engineer

Dear Sir:

Enclosed please find a map showing existing roads and planned access roads to Southland Royalty Company's Aztec #8E well. The locations of tank batteries and flow lines will be on location with well. A burn pit will be provided for disposal of trash. Cuttings, drilling fluid and produced fluids will be put into the reserve pit and properly disposed of depending on amount and type of fluids.

Contractor will furnish restroom facilities on location.

There will be no air strips or camps.

Also, enclosed is a location layout showing approximate location of rig, pits and pipe racks and cut required to build this location.

Water supply will be the San Juan River.

The location will be restored according to Bureau of Land Management standards. This work will begin when all related construction is finished.

Mr. Ross Lankford will be Southland Royalty Company's field representative supervising these operations.

Yours truly,

L. O. Van Ryan
District Production Manager

LOVR/dg



Southland Royalty Company

August 23, 1979

United States Geological Survey
P. O. Box 959
Farmington, New Mexico

Attention: Acting District Engineer

Re: Blowout Preventer Plan

Dear Sir:

All drilling and completion rigs will be equipped with 6" or larger double hydraulic blowout preventers and a hydraulic closing unit with steel lines.

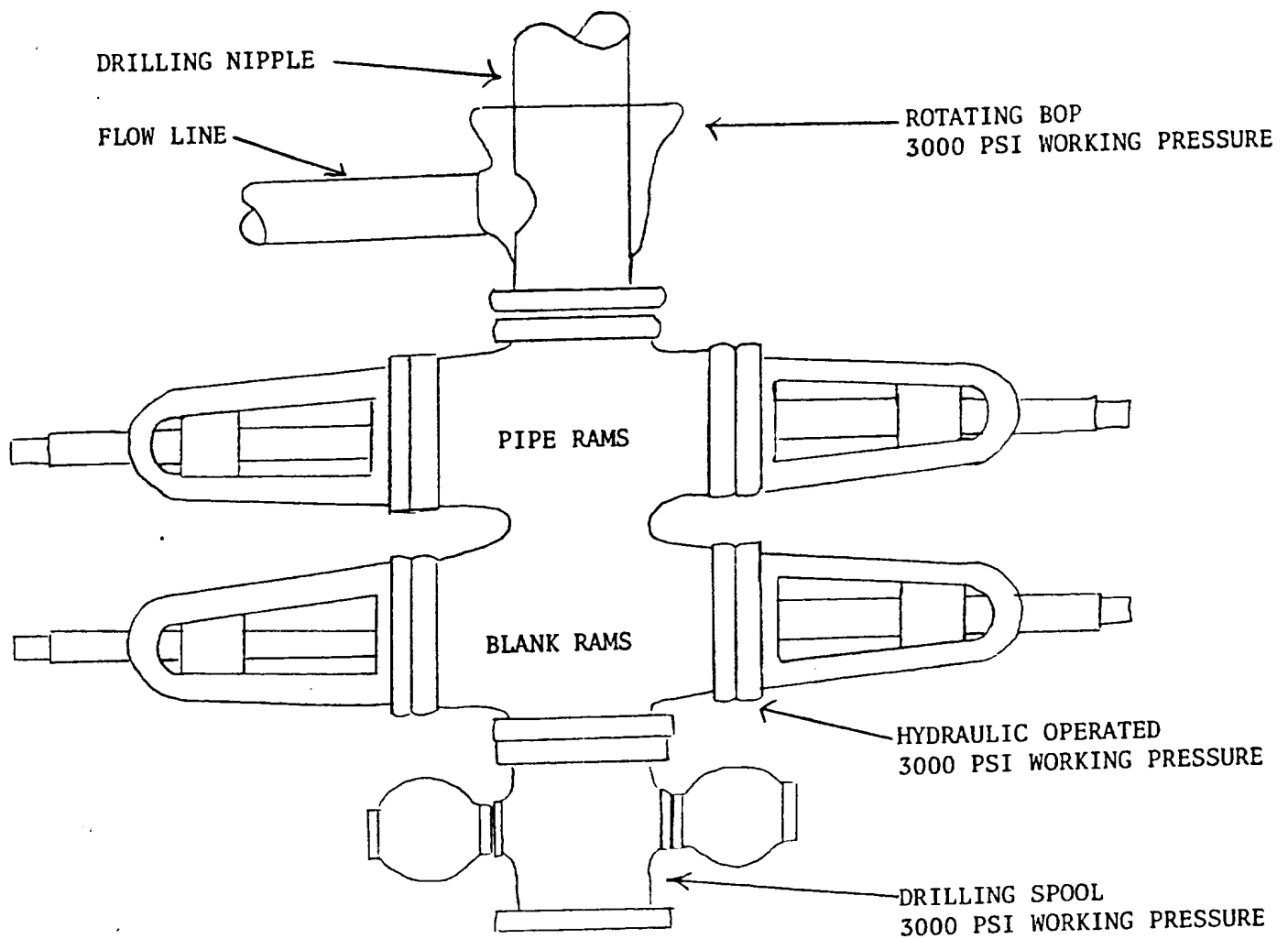
The preventer is 3000# working pressure and 6000# test.

All crews will be thoroughly trained in the operation of this preventer. The preventer will be tested frequently enough to insure proper operation.

Yours truly,

L. O. Van Ryan
District Production Manager

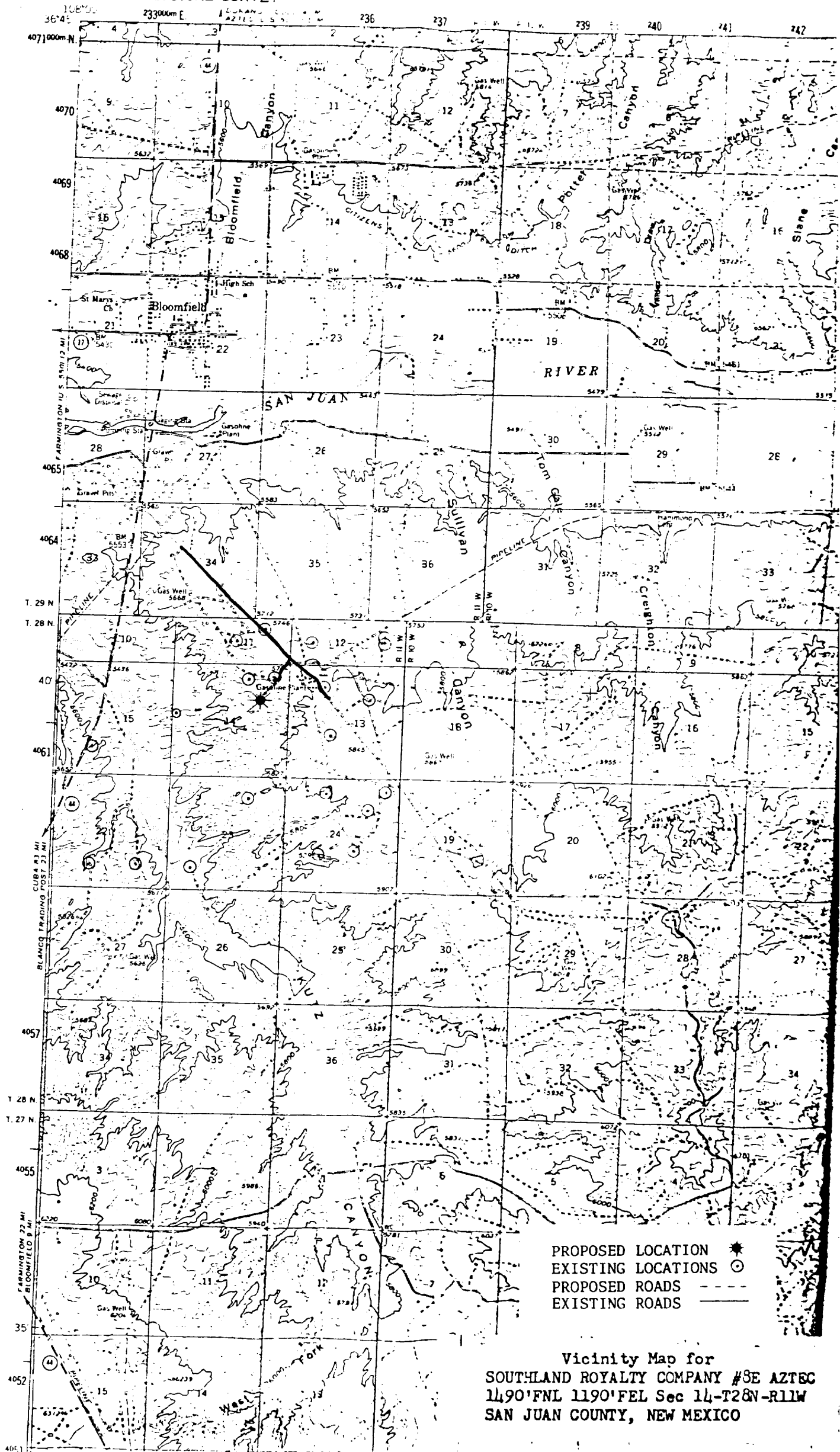
LOVR/dg



PREVENTERS AND SPOOLS ARE TO HAVE
THROUGH BORE OF 6" - 3000 PSI OR LARGER

33135
LOPA VISTA
124000

UNITED STATES
DEPARTMENT OF THE INTERIOR
GEOLOGICAL SURVEY



PROPOSED LOCATION *
EXISTING LOCATIONS ○
PROPOSED ROADS - - -
EXISTING ROADS —

Vicinity Map for
SOUTHLAND ROYALTY COMPANY #8E AZTEC
11490'FNL 1190'FEL Sec 14-T2&N-R11W
SAN JUAN COUNTY, NEW MEXICO

LOCATION PROFILE FOR
 SOUTHLAND ROYALTY COMPANY #8E AZTEC
 14,90' FNL 1190' FEL Sec 14-T28N-R11W
 SAN JUAN COUNTY, NEW MEXICO

