

UNITED STATES
DEPARTMENT OF THE INTERIOR
GEOLOGICAL SURVEY

APPLICATION FOR PERMIT TO DRILL, DEEPEN, OR PLUG BACK

1a. TYPE OF WORK

DRILL ☒DEEPEN ☐PLUG BACK ☐

b. TYPE OF WELL

OIL
WELL ☐GAS
WELL ☒

OTHER

SINGLE
ZONE ☒MULTIPLE
ZONE ☐

2. NAME OF OPERATOR

Southland Royalty Company

3. ADDRESS OF OPERATOR

P. O. Drawer 570, Farmington, New Mexico 87401

4. LOCATION OF WELL (Report location clearly and in accordance with any State requirements.)*

At surface

930' FSL & 1090' FEL

At proposed prod. zone

14. DISTANCE IN MILES AND DIRECTION FROM NEAREST TOWN OR POST OFFICE*

4 miles southeast of Bloomfield, New Mexico

15. DISTANCE FROM PROPOSED*

LOCATION TO NEAREST
PROPERTY OR LEASE LINE, FT.
(Also to nearest drlg. unit line, if any)

930'

18. DISTANCE FROM PROPOSED LOCATION*

TO NEAREST WELL, DRILLING, COMPLETED,
OR APPLIED FOR, ON THIS LEASE, FT.

1400'

16. NO. OF ACRES IN LEASE

566.52

19. PROPOSED DEPTH

6641'

17. NO. OF ACRES ASSIGNED
TO THIS WELL

E/320

20. ROTARY OR CABLE TOOLS

Rotary

21. ELEVATIONS (Show whether DF, RT, GR, etc.)

5999' GR

22. APPROX. DATE WORK WILL START*

November 30, 1979

23.

PROPOSED CASING AND CEMENTING PROGRAM

SIZE OF HOLE	SIZE OF CASING	WEIGHT PER FOOT	SETTING DEPTH	QUANTITY OF CEMENT
12-1/4"	8-5/8"	24#	200'	140 sxs, 165 cu. ft.
7-7/8"	4-1/2"	10.5#	6500'	209 sxs, 312 cu. ft.
	4-1/2"	11.6#	6500'-6641'	777 sxs, 1158 cu. ft.

Surface formation is Nacimiento.

Top of Ojo Alamo sand is at 1261'.

Top of Pictured Cliffs sand is at 2001'.

Fresh water mud will be used to drill from surface to total depth.

It is anticipated that an IES and a GR-Density log will be run at total depth.

No abnormal pressures or poisonous gases are anticipated in this well.

It is expected that this well will be drilled before January 1, 1980. This
depends on time required for approvals, rig availability and the weather.

Gas is dedicated.

IN ABOVE SPACE DESCRIBE PROPOSED PROGRAM: If proposal is to deepen or plug back, give data on present productive zone and proposed new productive zone. If proposal is to drill or deepen directionally, give pertinent data on subsurface locations and measured and true vertical depths. Give blowout preventer program, if any.

24.

SIGNED

TITLE

District Production Manager

DATE

October 17, 1979

(This space for Federal or State office use)

PERMIT NO.

APPROVAL DATE

APPROVED BY

TITLE

DATE

CONDITIONS OF APPROVAL, IF ANY:

NMOC

All distances must be from the outer boundaries of the Section.

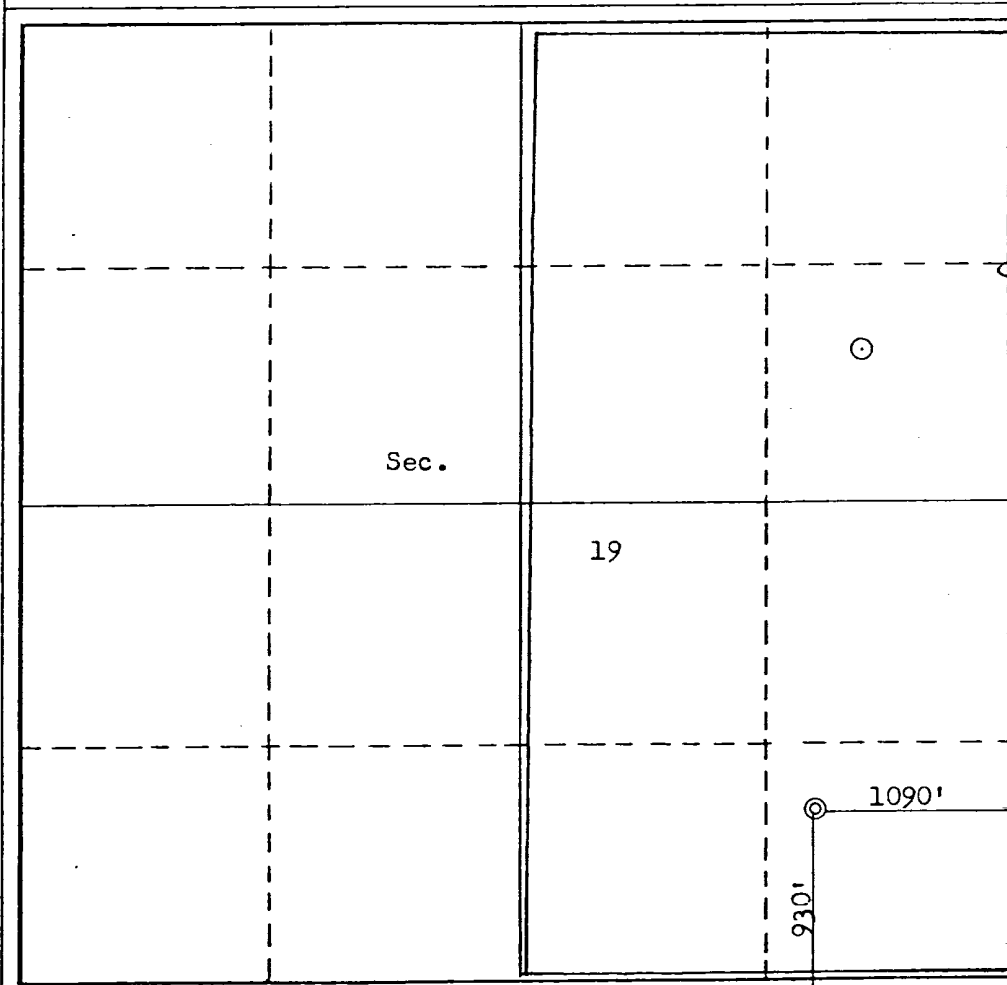
Operator SOUTHLAND ROYALTY COMPANY			Lease NEWMAN "A"		Well No. 8-E
Unit Letter P	Section 19	Township 28N	Range 10W	County San Juan	
Actual Footage Location of Well: 930 feet from the South line and 1090 feet from the East line					
Ground Level Elev. 5999	Producing Formation Dakota		Pool Basin Dakota		Dedicated Acreage: 320 Acres

1. Outline the acreage dedicated to the subject well by colored pencil or hatchure marks on the plat below.
2. If more than one lease is dedicated to the well, outline each and identify the ownership thereof (both as to working interest and royalty).
3. If more than one lease of different ownership is dedicated to the well, have the interests of all owners been consolidated by communitization, unitization, force-pooling, etc?

☐ Yes ☐ No If answer is "yes," type of consolidation _____

If answer is "no," list the owners and tract descriptions which have actually been consolidated. (Use reverse side of this form if necessary.) _____

No allowable will be assigned to the well until all interests have been consolidated (by communitization, unitization, forced-pooling, or otherwise) or until a non-standard unit, eliminating such interests, has been approved by the Commission.



CERTIFICATION

I hereby certify that the information contained herein is true and complete to the best of my knowledge and belief.

Name _____
Position
District Production Manager
Company
Southland Royalty Company
Date
October 17, 1979

I hereby certify that the well location shown on this plat was plotted from field notes of actual surveys made by me or under my supervision, and that the same is true and correct to the best of my knowledge and belief.

Date Surveyed
September 28, 1979

Registered Professional Engineer and/or Land Surveyor

Fred B. Kerr Jr.

Certificate No. **3950** MEXICO

DRILLING SCHEDULE - Newman A #8E

Location: 930' FSL & 1090' FEL, Section 19, T28N, R10W, San Juan County, New Mexico

Field: Basin Dakota

Geology:

Formation Tops:	Ojo Alamo	1261'	Gallup	5546'
	Fruitland	1791'	Graneros	6361'
	Pictured Cliffs	2001'	Dakota	6491'
	Cliff House	3551'	Total Depth	6641'
	Pt. Lookout	4331'		

Logging Program: IES and GR-Density from TD to surface casing.

Coring Program: None

Natural Gauges: None

Drilling:

Contractor:

Tool Pusher:

SRC Representative:

SRC Answering Service: 325-1841
Dispatch Number: 325-7391

Mud Program: Fresh water from surface to 5300'. Fresh water mud from 5300' to TD. Maintain mud wgt of 8.9 to 9.2. Pretreat mud with 10 to 12% LCM. Viscosity 35-45 sec, Water loss 10-12 cc.

Materials:

Casing Program:	Hole Size	Depth	Casing Size	Wt. & Grade	
	12-1/4"	200'	8-5/8"	24#	H-40
	7-7/8"	6500'	4-1/2"	10.5#	K-55
	7-6/8"	6500' - 6641'	4-1/2"	11.6#	K-55

Float Equipment:

8-5/8" surface casing: Pathfinder type "A" guide shoe.

4-1/2" Production casing: Pathfinder type "A" guide shoe. Pathfinder self-fill flapper type float collar. Run 1 jt off bottom. Five Pathfinder rigid stabilizers (run every other jt. above shoe. DV @ 4650'. Dowell stage tool at 4650' with 1 cement basket below and five pathfinder centralizers above tool.

Wellhead Equipment: 8-5/8" X 10", 2000# bradenhead with 4-1/2" casing hanger.
10", 2000# X 6", 2000 psi tubing head and tree.

Cementing Program:

8-5/8" surface casing: 140 sxs or 165 cu. ft. of Class B with 1/4# gel flake per sx. and 3% CaCl. WOC 12 hrs. Test to 600# prior to drilling out. (Volume is 100% Excess)

4-1/2" production string: Stage 1: 209 sxs or 312 cu. ft. of 50/50 Poz with 6% gel, 1/4" gel flake per sx and 0.6% Halad 9 or equivalent. (25% Excess)

Stage 2: 777 sxs or 1158 cu. ft. of the same cement as above. (50% Excess)

WOC and circulate between stages as required by well conditions.



Southland Royalty Company

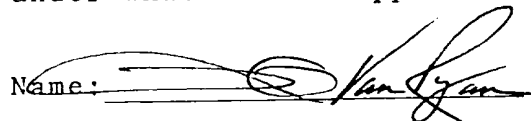
United States Geological Survey
P. O. Box 959
Farmington, New Mexico 87401

Attention: James Sims

Dear Sir:

I hereby certify that I, or persons under my direct supervision, have inspected the proposed drillsite and access route; that I am familiar with the conditions which presently exist; that the statements made in this plan are, to the best of my knowledge, true and correct; and, that the work associated with the operations proposed herein be performed by Southland Royalty Company and its contractors and subcontractors in conformity with this plan and the terms and conditions under which it is approved.

Date: October 17, 1979

Name: 

Title: District Production Manager



Southland Royalty Company

October 17, 1979

United States Geological Survey
P. O. Box 959
Farmington, New Mexico

Attention: James Sims

Dear Sir:

Enclosed please find a map showing existing roads and planned access roads to Southland Royalty Company's Newman "A" #8E well. The locations of tank batteries and flow lines will be on location with well. A burn pit will be provided for disposal of trash. Cuttings, drilling fluid and produced fluids will be put into the reserve pit and properly disposed of depending on amount and type of fluids.

Contractor will furnish restroom facilities on location.

There will be no air strips or camps.

Also, enclosed is a location layout showing approximate location of rig, pits and pipe racks and cut required to build this location.

Water supply will be the San Juan River.

The location will be restored according to Bureau of Land Management standards. This work will begin when all related construction is finished.

Mr. Ross Lankford will be Southland Royalty Company's field representative supervising these operations.

Yours truly,

L. O. Van Ryan
District Production Manager

LOVR/dg



Southland Royalty Company

October 17, 1979

United States Geological Survey
P. O. Box 959
Farmington, New Mexico

Attention: James Sims

Re: Blowout Preventer Plan

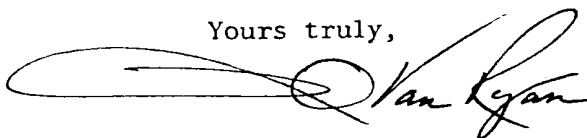
Dear Sir:

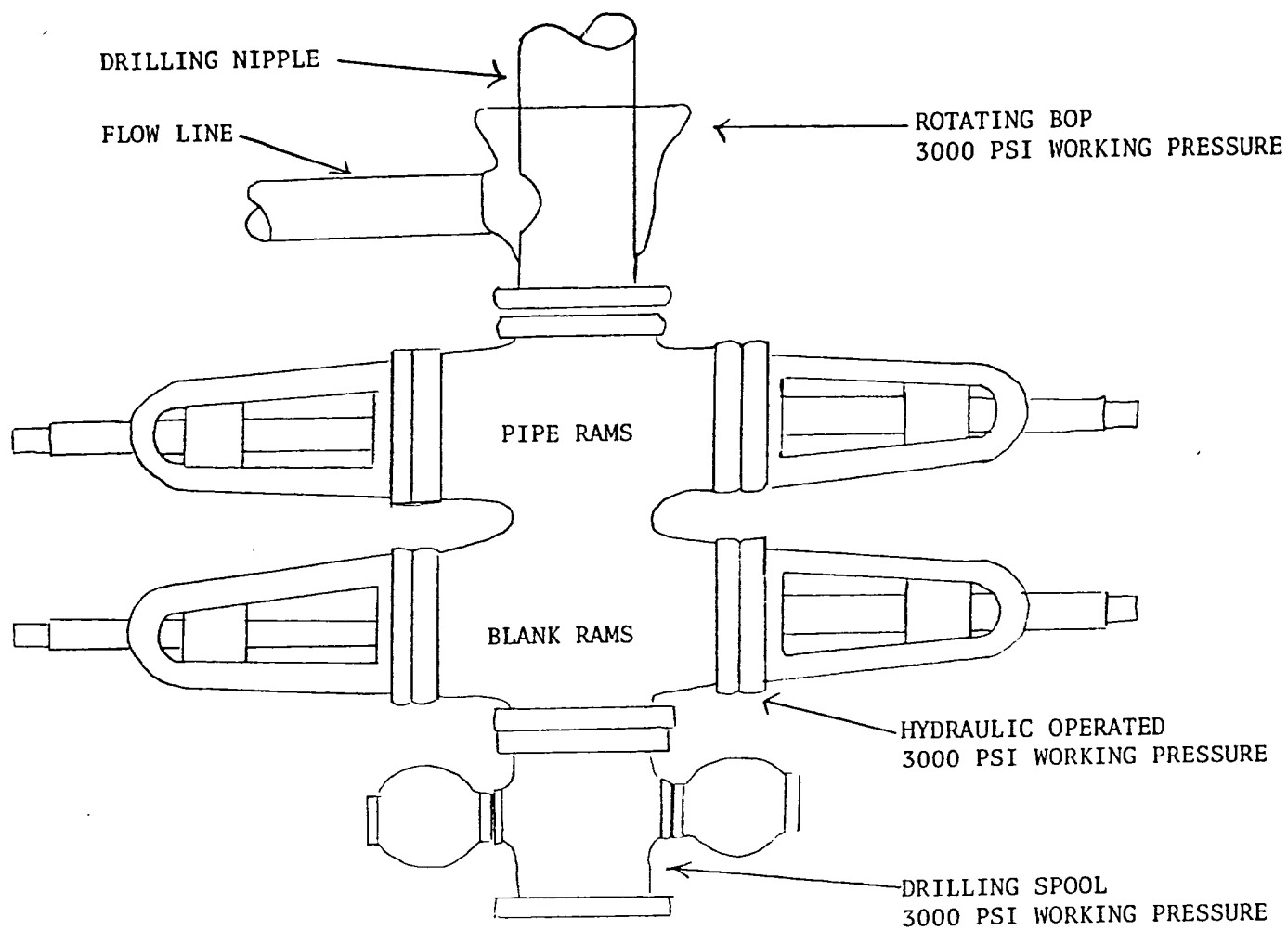
All drilling and completion rigs will be equipped with 6" or larger double hydraulic blowout preventers and a hydraulic closing unit with steel lines.

The preventer is 3000# working pressure and 6000# test.

All crews will be thoroughly trained in the operation of this preventer. The preventer will be tested frequently enough to insure proper operation.

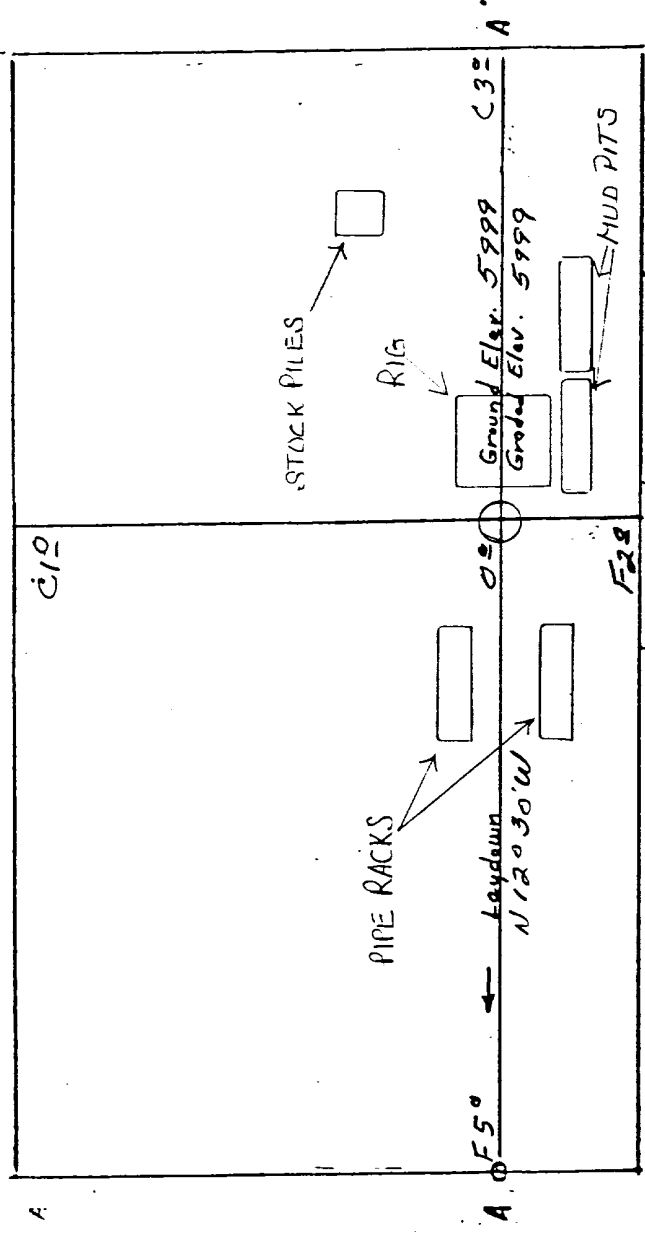
Yours truly,





PREVENTERS AND SPOOLS ARE TO HAVE
THROUGH BORE OF 6" - 3000 PSI OR LARGER

LOCATION PROFILE FOR
 SOUTHLAND ROYALTY CO. #8-E NEWMAN "A"
 930' FSL 1090' FEL Sec 19-T28N-R10W
 SAN JUAN COUNTY, NEW MEXICO



Vert. 1"=40' Horiz: 1"=100'

6010					
6000					
5990					

B-B'

6010					
6000					
5990					

Vert: 1"=40' Horiz: 1"=100'

D-D'

