

APPLICATION FOR MULTIPLE COMPLETION

Southland Royalty Co San Juan May 9, 1990
Operator County Date
PO Box 4289, Farmington, NM 87499 McClanahan 14E
Address Lease Well No.
H 23 28N 10W
Location Unit Section Township Range
of Well

All Applicants for multiple completion must complete Items 1 and 2 below.

1. The following facts are submitted:	Upper Zone	Intermediate Zone	Lower Zone
a. Name of Pool and Formation	Otero Chacra		Basin Dakota
b. Top and Bottom of Pay Section (Perforations)	2818-2938'		6216-6386'
c. Type of production (Oil or Gas)	gas		gas
d. Method of Production (Flowing or Artificial Lift)	flowing		flowing
e. Daily Production <input type="checkbox"/> Actual <input checked="" type="checkbox"/> Estimated Oil Bbls. Gas MCF Water Bbls.	100 MCF/D	RECEIVED AUG 1 1990 OIL CON. DIV. DIST. 3	200 MCF/D

2. The following must be attached:

- Diagrammatic Sketch of the Multiple Completion, showing all casing strings, including diameters and setting depths, centralizers and/or turbolizers and location thereof, quantities used and top of cement, perforated intervals, tubing strings, including diameters and setting depth, location and type of packers and side door chokes, and such other information as may be pertinent.
- Plat showing the location of all wells on applicant's lease, all offset wells on offset leases, and the names and addresses of operators of all leases offsetting applicant's lease.
- Electrical log of the well or other acceptable log with tops and bottoms of producing zones and intervals of perforation indicated thereon. (If such log is not available at the time application is filed it shall be submitted as provided by Rule 112-A.)

I hereby certify that the information above is true and complete to the best of my knowledge and belief.

Signed [Signature] Title Regulatory Affairs Date 5-9-90

(This space for State Use)

Approved By [Signature] Title SUPERVISOR DISTRICT # 8 Date AUG 10 1990

NOTE: If the proposed multiple completion will result in an unorthodox well location and/or a non-standard proration unit in one or more of the producing zones, then separate application for approval of the same should be filed simultaneously with this application.

NOTE: previously dually completed Mesa Verde-Dakota under order MC-2659 June 11, 1980.

NEW MEXICO OIL CONSERVATION COMMISSION
PACKER SETTING REPORT

I, D. W. Mussett, being of lawful age and having full
Name of party making report

knowledge of the facts hereinbelow set out do state:

That I am employed by Meridian Oil Inc. in the capacity of
Production Engineer, that on February 12, 1990

I personally supervised the setting of a Baker Model R-3 Double Grip Packer
Make & type of packer

in Southland Royalty' Co., McClanahan,
Operator of well *Lease name*

Well no. 14E located in the Otero Chacra/Basin Dakota field,
San Juan county, state of New Mexico, at a subsurface depth of

3120'KB feet, said depth measurement having been furnished me by
tubing talley;

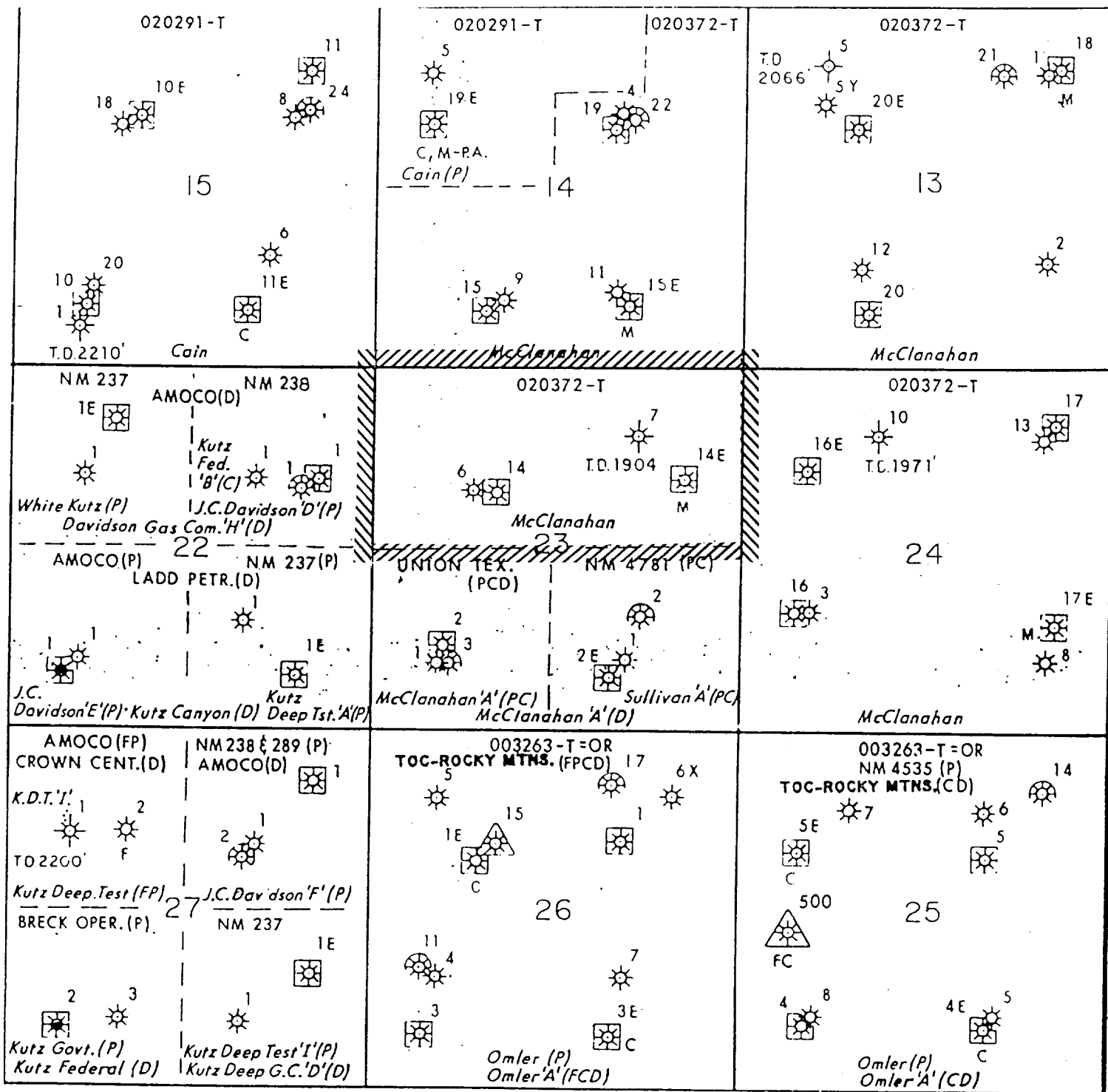
That the purpose of setting this packer was to effect a seal in the annular space between two strings of pipe where the packer was set so as to prevent the commingling, in the bore of this well, of fluids produced from a stratum below the packer with fluids produced from a stratum above the packer; that this packer was properly set and that it did, when set, effectively and absolutely seal off the annular space between the two strings of pipe where it was set in such manner as that it prevented any movement of fluids across the packer.


(Signature)

Production Engineer
(Title)

July 26, 1990
(Date)

OFFSET PRODUCTION PLAT



FRUITLAND GAS WELL



CHACRA GAS WELL



PICTURED C. S. G. W. L.



MESAVERDE GAS WELL



DAKOTA GAS WELL



OIL & GAS WELL AUG 1 1990



OIL WELL

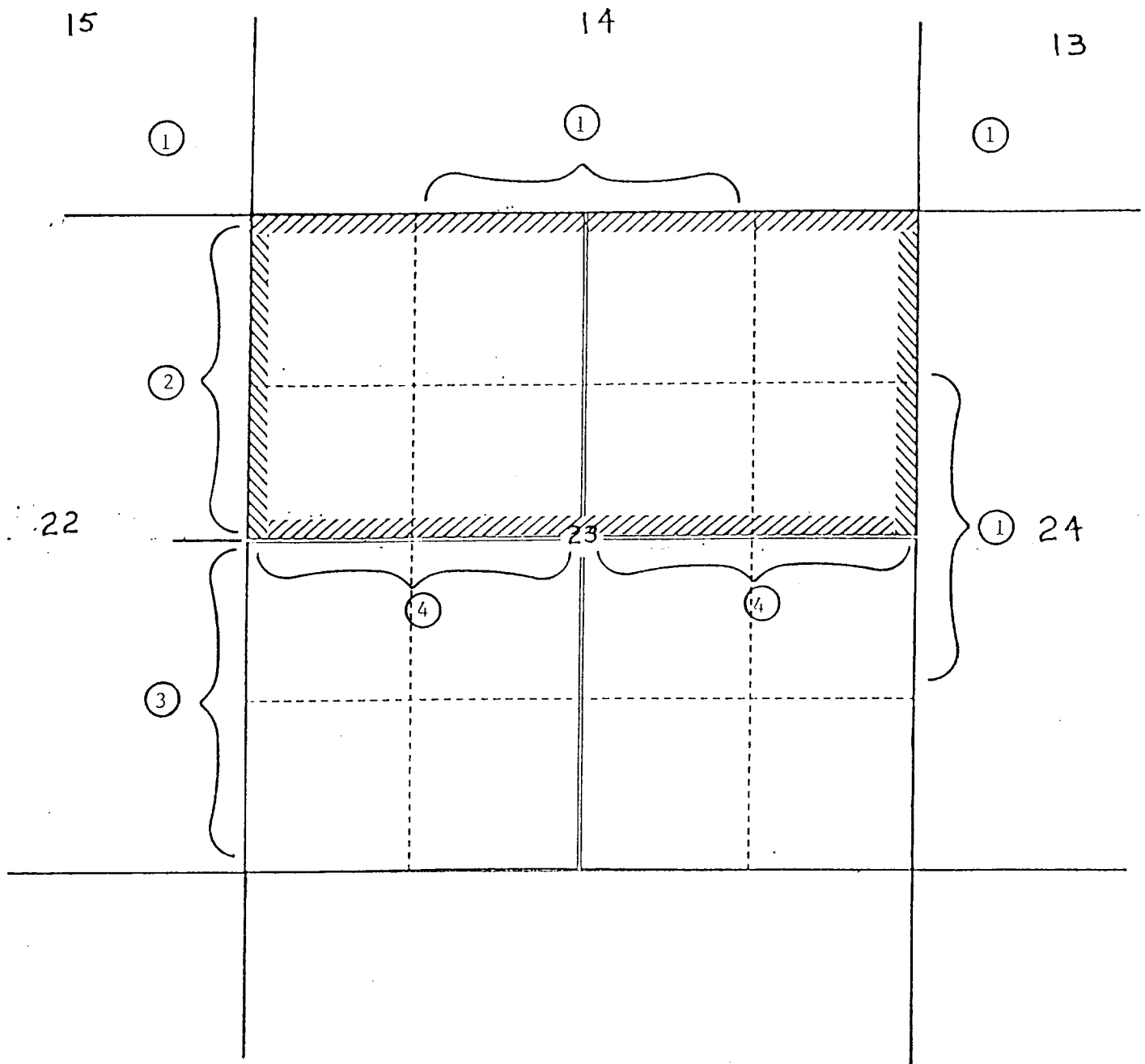


PLUGGED & ABANDONED

RECEIVED

OIL CON. DIV.
DIST. 3

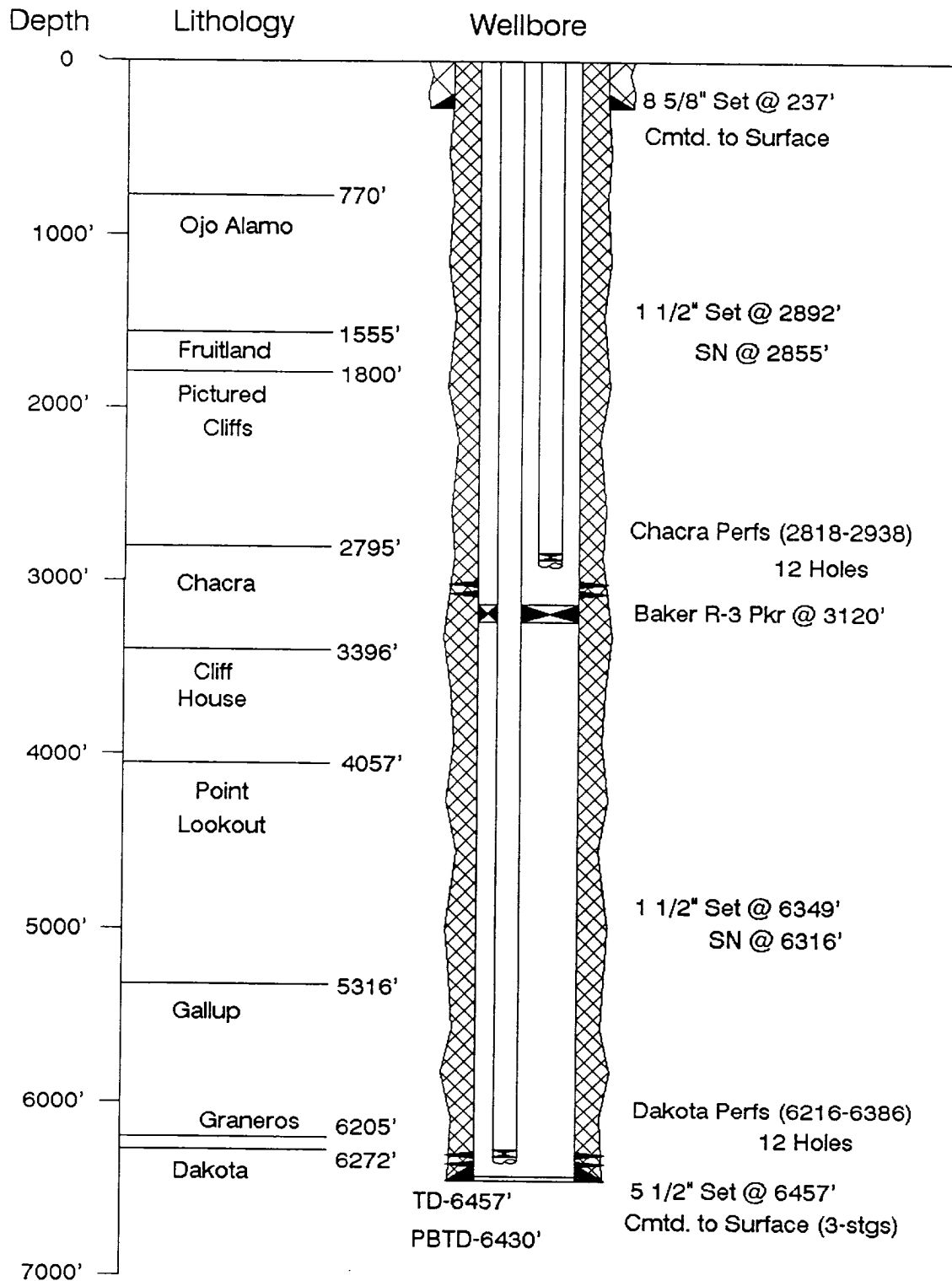
OFFSET OPERATOR PLAT



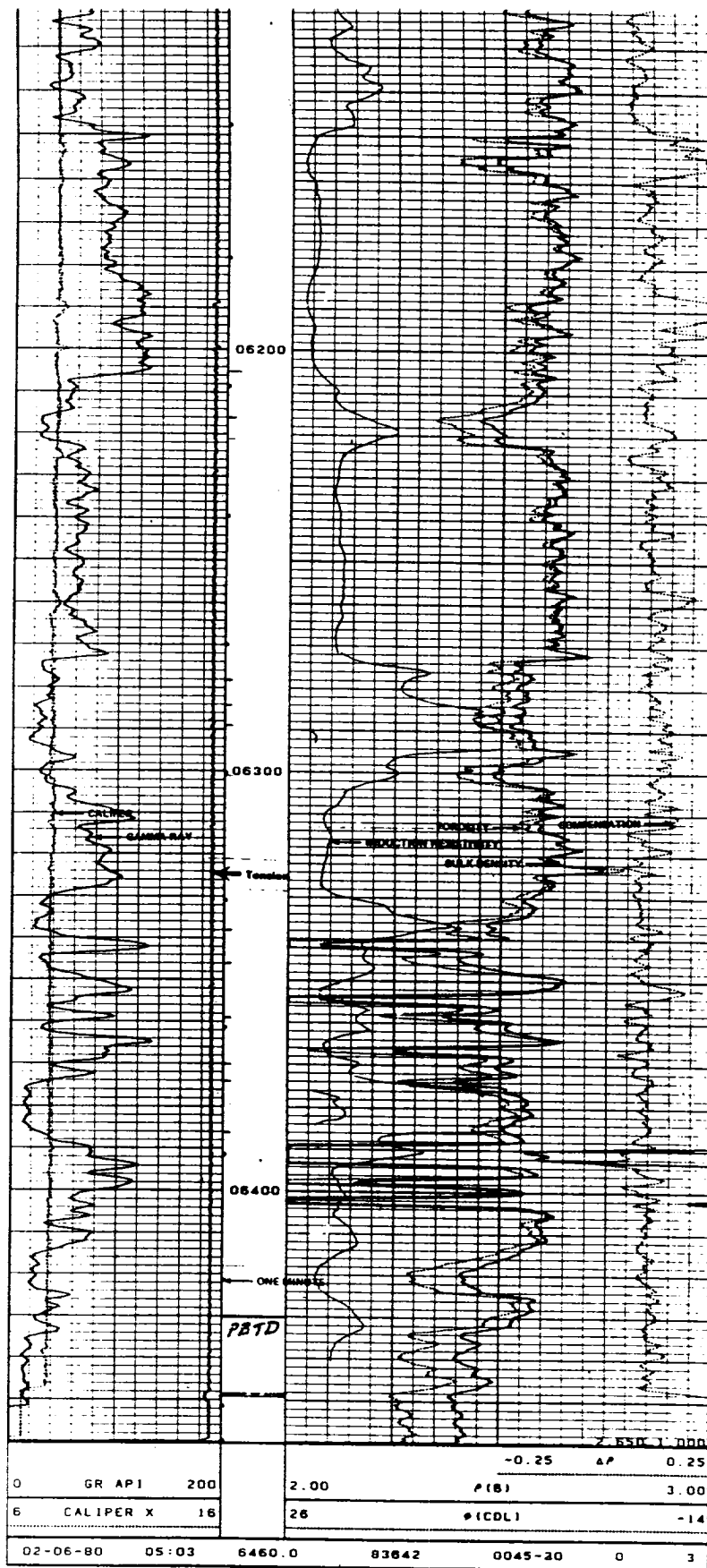
OFFSET OPERATOR	1) Southland Royalty Co. - All
	2) Amoco Production Co - All
	3) Amoco Production Co. - Chacra
	Ladd Petroleum Corp. - Dakota
	4) Union Texas Petroleum Corp. - All

McClanahan #14E

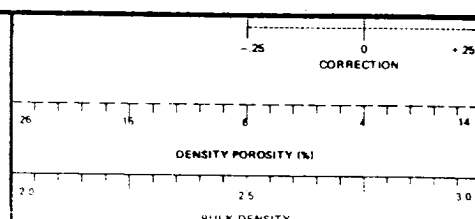
NE/4 Sec. 23 T28N-R10W



McClanahan #14E
 Dakota
 NE 23-28-10
 12 shots



HOLE SIZE - INCHES	16
CALIPER	
	200
	200



McClanahan 14E
Chacra

NE 23-28-10

12 shots

