

UNITED STATES
DEPARTMENT OF THE INTERIOR
BUREAU OF LAND MANAGEMENT

SUNDRY NOTICES AND REPORTS ON WELLS

Do not use this form for proposals to drill or to deepen or reentry to a different reservoir.
Use "APPLICATION FOR PERMIT—" for such proposals

SUBMIT IN TRIPLICATE

FORM APPROVED

Budget Bureau No. 1004-0135
Expires: March 31, 1993

5. Lease Designation and Serial No.

SF 046563

6. If Indian, Allottee or Tribe Name

7. If Unit or CA, Agreement Designation

8. Well Name and No.

McLeod #2E

9. API Well No.

30-045-24054

10. Field and Pool, or Exploratory Area

Basin Dakota

11. County or Parish, State

San Juan County, NM

1. Type of Well

☐ Oil Well ☒ Gas Well ☐ Other

2. Name of Operator

CONOCO INC
CONOCO INC.

3. Address and Telephone No.

10 DESTA DR. STE. 100W, MIDLAND, TX. 79705-4500 (915) 686-5424

4. Location of Well (Footage, Sec., T. R. M. or Survey Description)

Section 34, T-28-N, R-10-W, E
1530' FNL & 930' FWL

E sec 34 - 28N - 10W

CHECK APPROPRIATE BOX(S) TO INDICATE NATURE OF NOTICE, REPORT, OR OTHER DATA

TYPE OF SUBMISSION

☒ Notice of Intent

☐ Subsequent Report

☐ Final Abandonment Notice

TYPE OF ACTION

☒ Abandonment

☐ Recompletion

☐ Plugging Back

☐ Casing Repair

☐ Altering Casing

☐ Other

☐ Change of Plans

☐ New Construction

☐ Non-Routine Fracturing

☐ Water Shut-Off

☐ Conversion to Injection

☐ Dispose Water

(Note: Report results of multiple completion well Completion or Recompletion Report and Log form.)

13. Describe Proposed or Completed Operations (Clearly state all pertinent details, and give pertinent dates, including estimated date of starting any proposed work. If well is directionally drilled, give subsurface locations and measured and true vertical depths for all markers and zones pertinent to this work.)*

It has been proposed to plug and abandon this well using the attached procedure.

RECEIVED
AUG 09 1999
OIL CON. DIV.
PMT. 3

14. I hereby certify that the foregoing is true and correct.

Signed Kay Maddox

Kay Maddox

Title -Regulatory Agent

Date July 26, 1999

(This space for Federal or State office use)

Approved by /s/ Duane W. Spencer

Title Team Lead, Petroleum Management

Date AUG 5 1999

Conditions of approval if any:

BLM(6), NMOCD(1), SHEAR, PONCA, COST ASST, FILE ROOM

Title 18 U.S.C. Section 1001, makes it a crime for any person knowingly and willfully to make to any department or agency of the United States any false, fictitious or fraudulent statements or representations as to any matter within its jurisdiction.

*See Instruction on Reverse Side

NMOCD

PLUG & ABANDONMENT PROCEDURE

7-23-99

McLeod #2E

Basin Dakota

1530' FNL, 930' FWL, NW, Sec. 34, T28N, R10W
San Juan County, New Mexico

Note: All cement volumes use 100% excess outside pipe and 50' excess inside pipe. The stabilizing wellbore fluid will be 8.3 ppg, sufficient to balance all exposed formation pressures.

1. Install and test location rig anchors. Prepare blow pit. Comply with all NMOCDC, BLM, and Conoco safety regulations. MOL and RU daylight pulling unit. Conduct safety meeting for all personnel on location. NU relief line. Blow down well and kill with water as necessary. ND wellhead and NU BOP. Test BOP.
2. Release Baker Model R-3 packer at 5462'. TOH and tally 2-3/8" EUE tubing (6296'). LD packer and visually inspect tubing, if necessary PU 2" tubing workstring.
3. **Plug #1 (Dakota perforations, 6300' to 6250')**: Set wireline CIBP at 6300'. TIH with open ended tubing to 6300'. Load casing with water and attempt to pressure test to 500#. If casing does not test, then spot or tag subsequent plug as appropriate. Mix 12 sxs Class B cement and spot a balanced plug above CIBP to isolate perforations. TOH with tubing.
4. **Plug #2 (Gallup top, 5672' - 5572')**: Perforate 3 HSC squeeze holes at 5672'. Set 5-1/2" cement retainer at 5622'. Pressure test tubing to 1000#. Establish rate into squeeze holes. Mix 47 sxs Class B cement and squeeze 30 sxs cement outside 5-1/2" casing and leave 17 sxs cement inside casing to cover Gallup top. TOH with setting tool.
5. **Plug #3 (Mesaverde zone, 3574' - 3350')**: Perforate 3 HSC squeeze holes at 3574'. Set 5-1/2" cement retainer at 3400' (Note bad casing from 3427' to 3904'). Establish rate into squeeze holes. Mix 77 sxs Class B cement, squeeze 71 sxs below CR and outside 5-1/2" casing and leave 5 sxs above CR inside casing to cover top of Mesaverde. PUH to 1962'.
6. **Plug #4 (Pictured Cliffs top, 1962' - 1862')**: Mix 17 sxs Class B cement and spot a balanced plug from 1962' to 1862' over Pictured Cliffs top. TOH with tubing. PT casing.
7. **Plug #5 (Fruitland top, 1755' - 1655')**: Perforate 3 HSC squeeze holes at 1755'. Establish rate into squeeze holes if casing tested. Set 5-1/2" cement retainer at 1705'. Establish rate into squeeze holes. Mix 47 sxs Class B cement, squeeze 30 sxs cement outside 5-1/2" casing and leave 17 sxs inside casing to cover Fruitland top. TOH with tubing.
8. **Plug #6 (Kirtland and Ojo Alamo tops, 1152' - 881')**: Perforate 3 HSC squeeze holes at 1152'. Establish rate into squeeze holes if casing tested. Set 5-1/2" cement retainer at 1102'. Establish rate into squeeze holes. Mix 117 sxs Class B cement, squeeze 80 sxs outside 5-1/2" casing and leave 37 sxs inside casing to cover Ojo Alamo top. TOH and LD tubing.
9. **Plug #7 (8-5/8" casing shoe at 312')**: Perforate 3 squeeze holes at 362'. Establish circulation out bradenhead valve. Mix and pump approximately 100 sxs Class B cement down 5-1/2" casing from 362' to surface, circulate good cement out bradenhead valve. Shut in well and WOC.
10. ND BOP and cut off wellhead below surface casing. Install P&A marker with cement to comply with regulations. RD, MOL, cut off anchors, and restore location.

McLeod #2E

Current

Basin Dakota

NW Section 34, T-28-N, R-10-W, San Juan County, NM

Today's Date: 7/23/99

Spud: 10/19/81

Completed: 12/16/81

Elevation: 5970' GL

12-1/4" hole

8-5/8" 24#, K-55 Casing set @ 312'
240 sxs cement (Circulated to Surface)

WORKOVER HISTORY

Dec '82: P&A Lower Dakota: Set CR at 6550';
sqzd lower perforations with 100 sxs; perf & frac
upper Dk from 6344' to 6510'; ran 2" tubing.

Jun '87: Casing Repair: Found leaks from 3870'
to 3904'; sqzd w/100 sxs; no PT, slow bleed off;
set packer at 6296'.

Mar '98: Planned Casing Repair: Found multiple
holes from 3427' to 5356'; restricted casing at
5860', mill through; clean out to 6476'; set packer
to evaluate well.

Ojo Alamo @ 931'

Kirtland @ 1102'

Fruitland @ 1705'

Top of Cmt @ 1870' (CBL)

Pictured Cliffs @ 1962'

DV Tool @ 2471'
Cmt w/ 425 sxs

Mesaverde @ 3524'

Csg leak 3878-3904'; (1987)
sqzd with 100 sxs cmt.

Gallup @ 5622'

2-3/8" Tubing set at 6296'
(172 joints, EUE with
Model R Packer @ 5462')

Top of Cmt @ 6160' (CBL)

Baker Model R Packer @ 5462'

Dakota @ 6428'

Dakota Perforations:
6344 - 6510'

Cement Rt @ 6550'

Lower Dakota Perforations:
6630' - 6650'; P&A'd 6/83

5-1/2" 15.5#, K-55 Casing @ 6647'
Cement with 175 sxs (RFC)

7-7/8" Hole

PBTD 6550'

TD 6647'

McLeod #2E

Proposed P & A

Basin Dakota

NW Section 34, T-28-N, R-10-W, San Juan County, NM

Today's Date: 7/23/99

Spud: 10/19/81

Completed: 12/16/81

Elevation: 5970' GL

12-1/4" hole

Ojo Alamo @ 931'

Kirtland @ 1102'

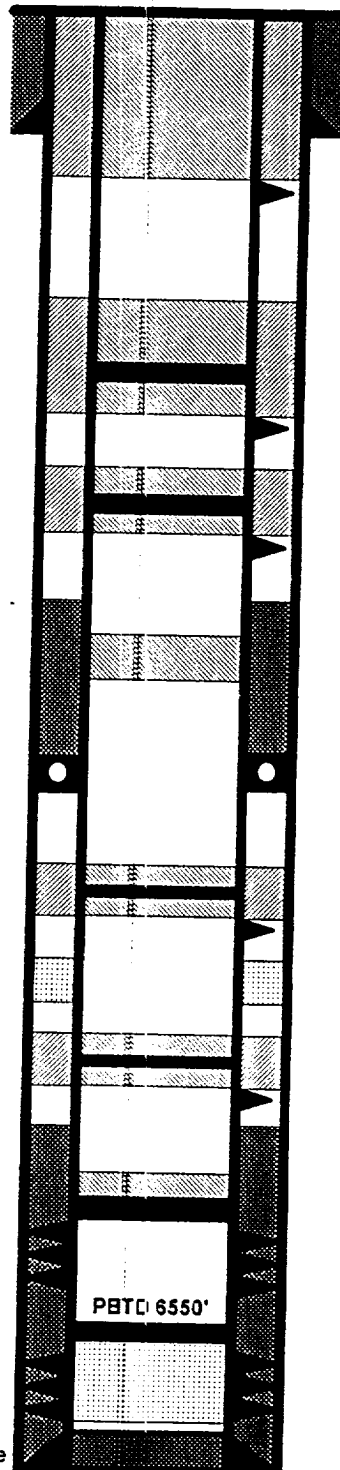
Fruitland @ 1705'

Pictured Cliffs @ 1962'

Mesaverde @ 3524'

Gallup @ 5622'

Dakota @ 6428'



7-7/8" Hole

TD 6647'

8-5/8" 24#, K-55 Casing set @ 312'
240 sxs cement (Circulated to Surface)

Perforate @ 362' Plug #7 362' - Surface
Cmt with 100 sxs Class B

Cement Rt @ 1102' Plug #6 1152' - 881'
Cmt with 117 sxs Class B,
80 sxs outside casing
and 37 sxs inside.

Perforate @ 1152'
Cement Rt @ 1655' Plug #5 1755' - 1655'
Cmt with 47 sxs Class B,
30 sxs outside casing
and 17 sxs inside.

Perforate @ 1755'
Top of Cmt @ 1870' (CBL)

Plug #4 1962' - 1862'
Cmt with 17 sxs Class B

DV Tool @ 2471'
Cmt w/ 425 sxs

Cement Rt @ 3400' Plug #3 3574' - 3350'
Cmt with 77 sxs Class B,
71 sxs below retainer
and 6 sxs above (csg leaks).

Perforate @ 3574'

Csg leak 3878-3904';
sqzd with 100 sxs cmt. Plug #2 5672' - 5572'
Cmt with 47 sxs Class B,
30 sxs outside casing
and 17 sxs inside.

Cement Rt @ 5622'
Perforate @ 5672'

Top of Cmt @ 6160' (CBL)

Set CIBP @ 6300' Plug #1 6300' - 6250'
Cmt with 12 sxs Class B

Dakota Perforations:
6344 - 6510'

Cement Rt @ 6550'

Lower Dakota Perforations:
6630' - 6650'; P&A'd 6/83

5-1/2" 15.5#, K-55 Casing @ 6647'
Cement with 175 sxs (RFC)