

submitted in lieu of Form 3160-5

UNITED STATES
DEPARTMENT OF THE INTERIOR
BUREAU OF LAND MANAGEMENT

Sundry Notices and Reports on Wells

1. Type of Well
GAS

2. Name of Operator

**BURLINGTON
RESOURCES**

OIL & GAS COMPANY

3. Address & Phone No. of Operator

PO Box 4289, Farmington, NM 87499 (505) 326-9700

4. Location of Well, Footage, Sec., T, R, M

1450' FSL, 1160' FEL, Sec. 31, T-28-N, R-9-W, NMPM

5. Lease Number
SF-077107-A

6. If Indian, All. or
Tribe Name

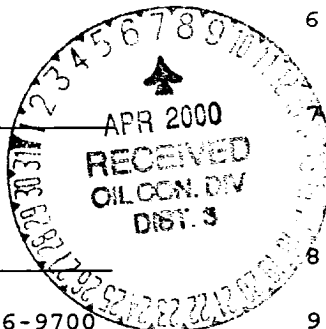
Unit Agreement Name

8. Well Name & Number
Hancock B #5E

9. API Well No.
30-045-24078

10. Field and Pool
Basin Dakota

11. County and State
San Juan Co, NM



12. CHECK APPROPRIATE BOX TO INDICATE NATURE OF NOTICE, REPORT, OTHER DATA

Type of Submission

☒ Notice of Intent
☐ Subsequent Report
☐ Final Abandonment

Type of Action

☒ Abandonment
☐ Recompletion
☐ Plugging Back
☐ Casing Repair
☐ Altering Casing
☒ Other -
☐ Change of Plans
☐ New Construction
☐ Non-Routine Fracturing
☐ Water Shut off
☐ Conversion to Injection

13. Describe Proposed or Completed Operations

It is intended to plug and abandon the subject well according to the attached procedure and wellbore diagram.

200 APR 20 PM 1:14
OIL CONSERVATION DIV

14. I hereby certify that the foregoing is true and correct.

Signed Regan Cole Title Regulatory Administrator Date 3/16/00
TLW

(This space for Federal or State Office use)

APPROVED BY /s/ Charlie Beecham Title _____ Date APR - 5 2000

CONDITION OF APPROVAL, if any:

Title 18 U.S.C. Section 1001, makes it a crime for any person knowingly and willfully to make to any department or agency of the United States any false, fictitious or fraudulent statements or representations as to any matter within its jurisdiction.

NMOCB

PLUG & ABANDONMENT PROCEDURE

2/25/00

Hancock B #5E

Basin Dakota

AIN: 5056001

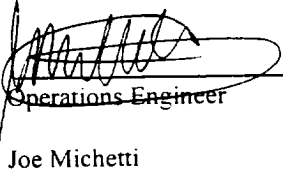
1450' FSL and 1160' FEL, Section 31, T-28-N, R-9-W

San Juan Co., New Mexico

Note: All cement volumes use 100% excess outside pipe and 50' excess inside pipe. The stabilizing wellbore fluid will be 8.3 ppg, sufficient to balance all exposed formation pressures.

1. Install and test location rig anchors if necessary. Prepare blow pit. Comply with all NMOCD, BLM, and Burlington safety regulations. MOL and RU daylight pulling unit. Conduct safety meeting for all personnel on location. NU relief line and blow down well; kill with water as necessary. ND wellhead and NU BOP. Test BOP.
2. **Plug #1 (Dakota Interval, 6470' – 6370')**: PU 4 joints tubing workstring and tag CIBP at 6470'. Load casing with water and circulate well clean. Establish rate into casing leak. If casing does not test, then spot or tag subsequent plugs as appropriate. Mix 12 sxs Class B cement and spot a balanced plug above the CIBP to isolate Dakota perforations and cover top. PUH to 5674'.
3. **Plug #2 (Gallup top, 5674' – 5574')**: Mix 12 sxs Class B cement and spot a balanced plug inside casing to cover the Gallup top. PUH to 3744'.
4. **Plug #3 (Mesaverde top, 3744' – 3644')**: Mix 20 sxs Class B cement, (increased cement due to casing leak), and spot a balanced plug inside casing to cover the Mesaverde top. PUH to 2205'.
5. **Plug #4 (Pictured Cliffs and Fruitland tops, 2205' – 1870')**: Mix 29 sxs Class B cement and spot a balanced plug inside casing to cover PC and Fruitland tops. PUH to 1340'.
6. **Plug #5 (Kirtland top, 1340' – 1240')**: Mix 12 sxs Class B cement and spot a balanced plug inside casing to cover Kirtland top. PUH to 1200' and reverse circulate well clean. TOH with tubing.
7. **Plug #6 (Ojo Alamo top, 1225' - 1125')**: Perforate 3 HSC squeeze holes at 1248'. If casing tested, then establish rate into squeeze holes. Set a 4-1/2" CR at 1200'. Establish rate below CR into squeeze holes. Mix 51 sxs Class B cement, squeeze 39 sxs cement outside 4-1/2" casing and leave 12 sxs cement inside casing to cover through Ojo Alamo top. TOH and LD tubing.
8. **Plug #7 (9-5/8" casing shoe, 279' - Surface)**: Perforate 3 HSC squeeze holes at 279'. Establish circulation out bradenhead. Mix approximately 110 sxs Class B cement and pump down 4-1/2" casing from 279' to surface, circulate good cement out bradenhead. Shut in well and WOC.
9. ND BOP and cut off wellhead below surface casing. Install P&A marker to comply with regulations. RD, MOL, cut off anchors, and restore location.

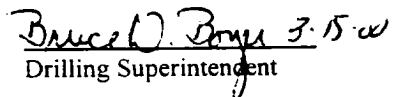
Recommended:


Operations Engineer

Joe Michetti
Office - 326-9764
Pager - 564-7187

03/14/00

Approved:


Drilling Superintendent

Hancock B #5E

Current

Asset: 5056001

Basin Dakota

SE, Section 31, T-28-N, R-9-W, San Juan County, NM

Latitude/Longitude: 36°36.9003'/107° 49.4669

Today's Date: 2/25/00

Spud: 4/6/80

Completion: 8/4/80

Elevation: 6094' GL
6104' KB

13-3/4" hole

Ojo Alamo @ 1175'

Kirtland @ 1290'

Fruitland @ 1920'

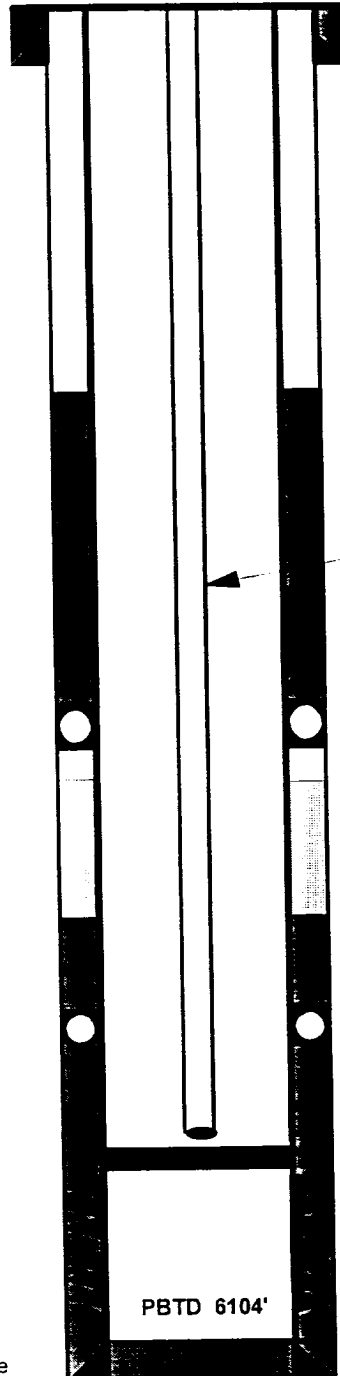
Pictured Cliffs @ 2155'

Mesaverde @ 3694'

Gallup @ 5624'

Dakota @ 6567'

7-7/8" hole



9-5/8" 32.3# H-40 Casing set @ 229'
Cmt with 224 cf (Circulated to Surface)

Well History

Feb '98: Slick Line: Ran GR to 6600', FL at 5900'; could not pull tubing stop at 6600'.

Nov '98: Bradenhead has 80# psi, did not blow down after 1 hr; casing pressure did not change.

Dec '99: Planned Bradenhead Repair: Pull tubing; set CIBP at 6450'; ran CBL; found casing leaks from 4403' - 4434'; sqzd with 200 sxs; leak 3657' - 4093'; sqzd with 60 sxs; leak. sqzd with 75 sxs; still leaks; ran 2nd CBL, land tubing.

TOC @ 1254' (12/23/99 CBL)

2-3/8" Tubing Set at 6354'
(204 joints)

DV Tool @ 2355'
Cmt w/ 436 sxs (706 cf)

TOC @ 3050' (12/23/99 CBL)

Sqz casing leaks from 3361' to 4434' with total 335 sxs,

DV Tool @ 5046'
Cmt w/ 422 sxs (684 cf)

TOC @ DV Tool (12/23/99 CBL)

CIBP set at 6470' (1999)

Dakota Perforations:
6509' - 6710'

4-1/2" 10.5#&11.6# K-55 Casing set @ 6808'
Cemented with 247 sxs (378 cf)

Hancock B #5E

Proposed P&A

Asset: 5056001

Basin Dakota

SE, Section 31, T-28-N, R-9-W, San Juan County, NM

Latitude/Longitude: 36°36.9003'/107° 49.4669'

Today's Date: 2/25/00

Spud: 4/6/80

Completion: 8/4/80

Elevation: 6094' GL
6104' KB

13-3/4" hole

Ojo Alamo @ 1175'

Kirtland @ 1290'

Fruitland @ 1920'

Pictured Cliffs @ 2155'

Mesaverde @ 3694'

Gallup @ 5624'

Dakota @ 6567'

9-5/8" 32.3#, H-40 Casing set @ 229'
Cmt with 224 cf (Circulated to Surface)

Perforate @ 279'

Plug #7 279' - Surface
Cmt with 110 sxs Class

Cmt Retainer @ 1200'

Plug #6 1225' - 1125'
Cmt with 51 sxs Class B
39 sxs outside casing
and 12 sxs inside.

Perforate @ 1248'

TOC @ 1254' (12/23/99 CBL)

Plug #5 1340' - 1240'
Cmt with 12 sxs Class B

Plug #4 2205' - 1870'
Cmt with 29 sxs Class B

DV Tool @ 2355'
Cmt w/ 436 sxs (706
cf)

TOC @ 3050' (12/23/99 CBL)

Sqz casing leaks from 3361'
to 4434' with total 335 sxs,

Plug #3 3744' - 3644'
Cmt with 20 sxs Class B

DV Tool @ 5046'
Cmt w/ 422 sxs (684 cf)

Plug #2 5674' - 5574'
Cmt with 12 sxs Class B

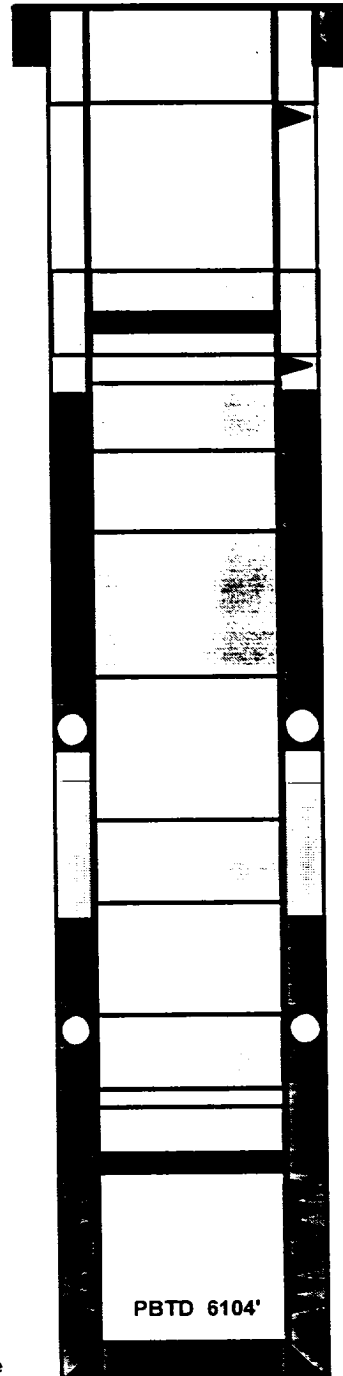
TOC @ DV Tool (12/23/99 CBL)

CIBP set at 6470' (1999)

Plug #1 6470' - 6370'
Cmt with 12 sxs Class E

Dakota Perforations:
6509' - 6710'

4-1/2" 10.5#&11.6#, K-55 Casing set @ 6808'
Cemented with 247 sxs (378 cf)



PBTD 6104'

TD 6809'