

All distances must be from the outer boundaries of the Section.

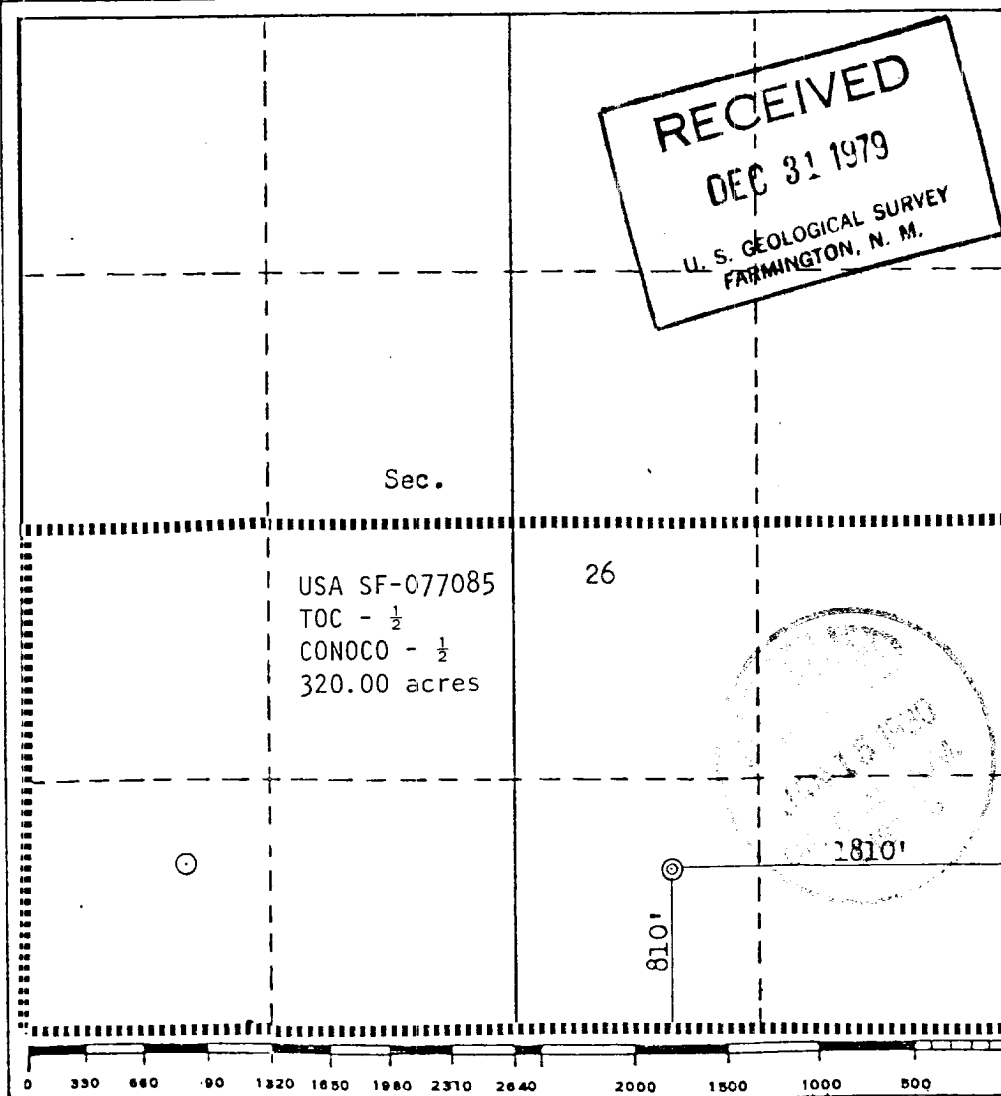
Operator TENNECO OIL COMPANY			Lease OMLER "A"		Well No. 3-E
Unit Letter 0	Section 26	Township 28N	Range 10W	County San Juan	
Actual Footage Location of Well: 810 feet from the South line and 1810 feet from the East line					
Ground Level Elev. 5811	Producing Formation Dakota		Pool Basin Dakota		Dedicated Acreage: 320.00 Acres

1. Outline the acreage dedicated to the subject well by colored pencil or hatchure marks on the plat below.
2. If more than one lease is dedicated to the well, outline each and identify the ownership thereof (both as to working interest and royalty).
3. If more than one lease of different ownership is dedicated to the well, have the interests of all owners been consolidated by communitization, unitization, force-pooling, etc?

☐ Yes ☐ No If answer is "yes," type of consolidation _____

If answer is "no," list the owners and tract descriptions which have actually been consolidated. (Use reverse side of this form if necessary.) _____

No allowable will be assigned to the well until all interests have been consolidated (by communitization, unitization, forced-pooling, or otherwise) or until a non-standard unit, eliminating such interests, has been approved by the Commission.



CERTIFICATION

I hereby certify that the information contained herein is true and complete to the best of my knowledge and belief.

Name M. A. Human
Position Staff Production Analyst
Company TENNECO OIL COMPANY
Date 12-7-79

I hereby certify that the well location shown on this plat was plotted from field notes of actual surveys made by me or under my supervision, and that the same is true and correct to the best of my knowledge and belief.

Date Surveyed September 27, 1979
Registered Professional Engineer and/or Land Surveyor Fred B. Kerr Jr.
Certificate No. 3950