

District I  
P.O. Box 1000 Hobbs NM

District II  
P.O. Box 1000 Artesia NM 88221

District III  
P.O. Box 1000 Rio Brazos Rd. Aztec NM 87410

State of New Mexico  
Energy, Minerals and Natural Resources Department

SUBMIT 1 COPY TO  
APPROPRIATE  
DISTRICT OFFICE  
AND 1 COPY TO  
SANTA FE OFFICE

OIL CONSERVATION DIVISION

2040 South Pacheco Street  
Santa Fe, New Mexico 87505

*Denny E. Foster*  
**DEPUTY OIL & GAS INSPECTOR**

**JUL 18 1997**

**PIT REMEDIATION AND CLOSURE REPORT**

**Operator:** PNM Gas Services ( Burlington Resources ) **Telephone:** 324-3764

**Address:** 603 W. Elm Street Farmington, NM 87401

**Facility or Well Name:** Newman C #1E

**Location:** Unit: E Sec. 30 T. 28 N R. 10 W County San Juan

**Pit Type:** Separator ☒ Dehydrator ☐ Other None

**Land Type:** BLM ☒ State ☐ Fee ☐ Other No

**Pit Location:** Pit dimensions: length 20 width 20 depth 3

(Attach diagram) **Reference:** wellhead ☒ other ☐

**Footage from reference:** 111'

**Direction from reference:** 35 Degrees ☒ East ☐ North ☒  
of  
☐ West ☐ South

**Depth to Ground Water:**

(Vertical distance from contaminants to  
seasonal high water elevation of ground  
water)

Less than 50 feet (20 points)  
50 feet to 99 feet (10 points)  
Greater than 100 feet (0 points) 0

**Wellhead Protection Area:**

(Less than 200 feet from a private  
domestic water source, or, less than 1,000  
feet from all other water sources)

Yes (20 points)  
No (0 points) 0

**RECEIVED**  
**APR 24 1997**  
**OIL CON. DIV.**  
**DIST. 3**

**Distance to Surface Water:**

(Horizontal distance to perennial lakes,  
ponds, rivers, streams, creeks, irrigation  
canals and ditches)

Less than 200 feet (20 points)  
200 feet to 1,000 feet (10 points)  
Greater than 1,000 feet (0 points) 0

**RANKING SCORE (TOTAL POINTS):** 0

Date Remediation Started: 9/25/96 Date Completed: 9/26/96

Remediation Method: Excavation X Approx. Cubic Yard 39

(Check all appropriate sections)

Landfarmed X Amount Landfarmed (cubic yds) 39

Other \_\_\_\_\_

Remediation Location: Onsite X Offsite \_\_\_\_\_  
(i.e., landfarmed onsite, name and location of offsite facility)

Backfill Material Location: \_\_\_\_\_

### General Description of Remedial Action:

Excavated contaminated soil to a pit size of 13'X9'X9' and landfarmed soil onsite within a bermed area at a depth of 6" to 12". Soil was aerated by plowing/disking until soil met regulatory levels.

Ground Water Encountered: No ✓ Yes \_\_\_\_\_ Depth \_\_\_\_\_

### Final Pit Closure Sampling:

Sample Location 5 pt composite - 4 walls and center of pit bottom.

(if multiple samples, attach sample result and diagram of sample locations and depths.)

Sample depth 9'

Sample date 9/25/96 Sample time 3:15:00 PM

### Sample Results

Benzene (ppm) < 0.0002

Total BTEX (ppm) 0.2709

Field headspace (ppm) \_\_\_\_\_

TPH < 5.00 Method 8015A

Vertical Extent (ft) \_\_\_\_\_ Risk Assessment form attached Yes \_\_\_\_\_ No ✓

Ground Water Sample: Yes \_\_\_\_\_ No ✓ (If yes, see attached Groundwater Site Summary Report)

I HEREBY CERTIFY THAT THE INFORMATION ABOVE IS TRUE AND COMPLETE TO THE BEST OF MY KNOWLEDGE AND MY BELIEF

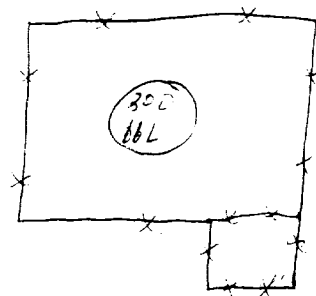
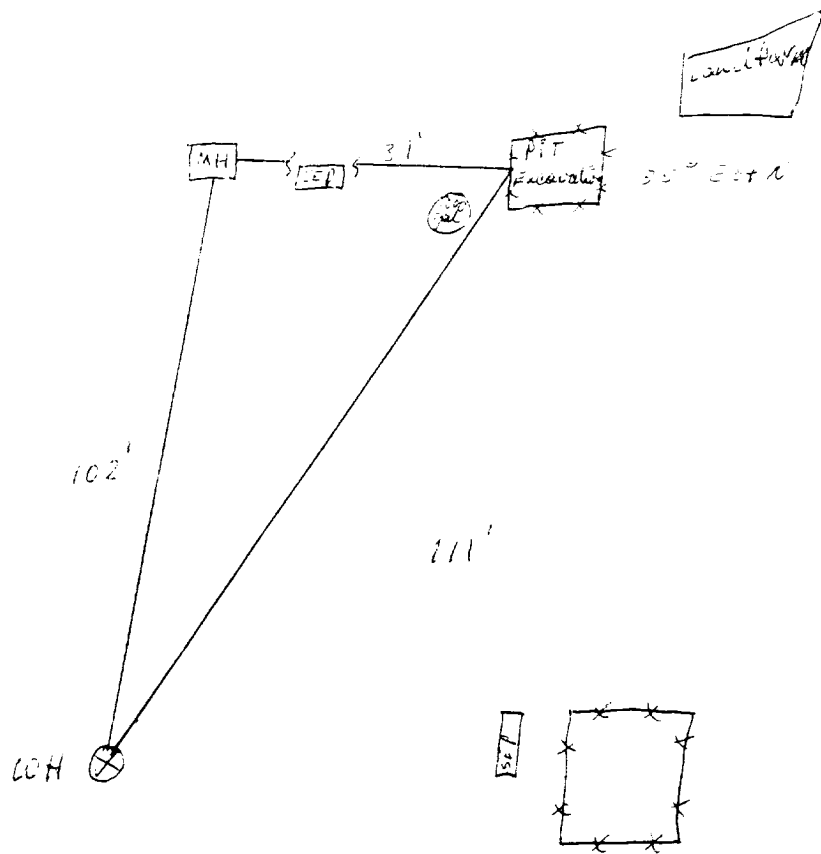
DATE April 28, 1997

SIGNATURE Denver Bearden

PRINTED NAME AND TITLE Denver Bearden  
Administrator III

Newton C<sup>2</sup>IE

↑  
N



OFF: (505) 325-5667



LAB: (505) 325-1556

### *Diesel Range Organics*

Attn: *Denver Bearden*  
Company: *PNM Gas Services*  
Address: *603 W. Elm*  
City, State: *Farmington, NM 87401*

Date: *27-Sep-96*  
COC No.: *5405*  
Sample No.: *12321*  
Job No.: *2-1000*

Project Name: *PNM Gas Services - Newman C #1E*  
Project Location: *9609251515; Pit Excavation Composite Sample*  
Sampled by: *RH* Date: *25-Sep-96* Time: *15:15*  
Analyzed by: *HR/DC* Date: *27-Sep-96*  
Sample Matrix: *Soil*

### *Laboratory Analysis*

<i>Parameter</i>	<i>Result</i>	<i>Unit of Measure</i>	<i>Detection Limit</i>	<i>Unit of Measure</i>
<i>Diesel Range Organics (C10 - C28)</i>	<i>&lt;5.0</i>	<i>mg/kg</i>	<i>5.0</i>	<i>mg/kg</i>

### *Quality Assurance Report*

*DRO QC No.: 0489-QC*

#### *Calibration Check*

<i>Parameter</i>	<i>Method Blank</i>	<i>Unit of Measure</i>	<i>True Value</i>	<i>Analyzed Value</i>	<i>% Diff</i>	<i>Limit</i>
<i>Diesel Range (C10 - C28)</i>	<i>&lt;5.0</i>	<i>ppm</i>	<i>100</i>	<i>94</i>	<i>6.3</i>	<i>15%</i>

#### *Matrix Spike*

<i>Parameter</i>	<i>1- Percent Recovered</i>	<i>2- Percent Recovered</i>	<i>Limit</i>	<i>%RSD</i>	<i>Limit</i>
<i>Diesel Range (C10-C28)</i>	<i>99</i>	<i>100</i>	<i>(70-130)</i>	<i>1</i>	<i>20%</i>

**Method** - SW-846 EPA Method 8015A mod. - Nonhalogenated Volatile Hydrocarbons by Gas Chromatography

Approved by: *[Signature]*  
Date: *9/27/96*

P.O. BOX 2606 • FARMINGTON, NM 87499

- TECHNOLOGY BLENDING INDUSTRY WITH THE ENVIRONMENT -

OFF: (505) 325-5667



LAB: (505) 325-1556

### AROMATIC VOLATILE ORGANICS

Attn: *Denver Bearden*  
Company: *PNM Gas Services*  
Address: *603 W. Elm*  
City, State: *Farmington, NM 87401*

Date: *26-Sep-96*  
COC No.: *5405*  
Sample No.: *12321*  
Job No.: *2-1000*

Project Name: *PNM Gas Services - Newman C #1E*  
Project Location: *9609251515; Pit Excavation Composite Sample*  
Sampled by: *RH* Date: *25-Sep-96* Time: *15:15*  
Analyzed by: *HR* Date: *26-Sep-96*  
Sample Matrix: *Soil*

#### Laboratory Analysis

Parameter	Result	Unit of Measure	Detection Limit	Unit of Measure
<i>Benzene</i>	<i>&lt;0.2</i>	<i>ug/kg</i>	<i>0.2</i>	<i>ug/kg</i>
<i>Toluene</i>	<i>22.9</i>	<i>ug/kg</i>	<i>0.2</i>	<i>ug/kg</i>
<i>Ethylbenzene</i>	<i>52.3</i>	<i>ug/kg</i>	<i>0.2</i>	<i>ug/kg</i>
<i>m,p-Xylene</i>	<i>181.3</i>	<i>ug/kg</i>	<i>0.2</i>	<i>ug/kg</i>
<i>o-Xylene</i>	<i>14.5</i>	<i>ug/kg</i>	<i>0.2</i>	<i>ug/kg</i>
	<i>TOTAL</i>	<i>270.9</i>		<i>ug/kg</i>

**Method** - SW-846 EPA Method 8020 Aromatic Volatile Organics by Gas Chromatography

Approved by: *[Signature]*  
Date: *9/26/96*

P.O. BOX 2606 • FARMINGTON, NM 87499

- TECHNOLOGY BLENDING INDUSTRY WITH THE ENVIRONMENT -

1-6-97

Newman C#1E

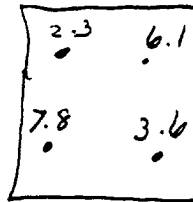
Meridian 0:1

Sec. 30, 28N, 10W

Land Farm: On location

composite sample # 9701061445-

soil vapor-headspace PID reading = 43.6 ppm



2"-12" depth

⊗

OFF: (505) 325-5667



LAB: (505) 325-1556

### *Diesel Range Organics*

Attn: *Denver Bearden*  
Company: *PNM Gas Services*  
Address: *603 W. Elm*  
City, State: *Farmington, NM 87401*

Date: *8-Jan-97*  
COC No.: *5854*  
Sample No. *13328*  
Job No. *2-1000*

Project Name: *PNM Gas Services - Newman C #1E Landfarm*  
Project Location: *9701061445; 4pt. Composite, 2"-12" depth*  
Sampled by: *GC* Date: *6-Jan-97* Time: *14:45*  
Analyzed by: *HR* Date: *7-Jan-97*  
Sample Matrix: *Soil*

### *Laboratory Analysis*

<i>Parameter</i>	<i>Result</i>	<i>Unit of Measure</i>	<i>Detection Limit</i>	<i>Unit of Measure</i>
<i>Diesel Range Organics (C10 - C28)</i>	<i>&lt;5.0</i>	<i>mg/kg</i>	<i>5.0</i>	<i>mg/kg</i>

### *Quality Assurance Report*

DRO QC No.: *0512-QC*


#### *Calibration Check*

<i>Parameter</i>	<i>Method Blank</i>	<i>Unit of Measure</i>	<i>True Value</i>	<i>Analyzed Value</i>	<i>% Diff</i>	<i>Limit</i>
<i>Diesel Range (C10 - C28)</i>	<i>&lt;5.0</i>	<i>ppm</i>	<i>100</i>	<i>104</i>	<i>4.2</i>	<i>15%</i>

#### *Matrix Spike*

<i>Parameter</i>	<i>1- Percent Recovered</i>	<i>2- Percent Recovered</i>	<i>Limit</i>	<i>%RSD</i>	<i>Limit</i>
<i>Diesel Range (C10-C28)</i>	<i>98</i>	<i>100</i>	<i>(70-130)</i>	<i>1</i>	<i>20%</i>

**Method** - SW-846 EPA Method 8015A mod. - Nonhalogenated Volatile Hydrocarbons by Gas Chromatography

Approved by: 

Date: *1/8/97*

P.O. BOX 2606 • FARMINGTON, NM 87499

- TECHNOLOGY BLENDING INDUSTRY WITH THE ENVIRONMENT -