

UNITED STATES
DEPARTMENT OF THE INTERIOR
GEOLOGICAL SURVEY

30-045-24158

APPLICATION FOR PERMIT TO DRILL, DEEPEN, OR PLUG BACK

1a. TYPE OF WORK
DRILL ☒ DEEPEN ☐ PLUG BACK ☐

b. TYPE OF WELL
OIL WELL ☐ GAS WELL ☒ OTHER ☐
SINGLE ZONE ☐ MULTIPLE ZONE ☒

2. NAME OF OPERATOR
Supron Energy Corporation

3. ADDRESS OF OPERATOR
P.O. Box 808, Farmington, New Mexico 87401

4. LOCATION OF WELL (Report location clearly and in accordance with any State requirements.)*
At surface 1105'/S; 790'/E Line
At proposed prod. zone Same as above

14. DISTANCE IN MILES AND DIRECTION FROM NEAREST TOWN OR POST OFFICE*
3 Miles Southeast of Bloomfield, New Mexico

10. DISTANCE FROM PROPOSED*
LOCATION TO NEAREST
PROPERTY OR LEASE LINE, FT.
(Also to nearest drlg. unit line, if any) 790'

18. DISTANCE FROM PROPOSED LOCATION*
TO NEAREST WELL, DRILLING, COMPLETED,
OR APPLIED FOR, ON THIS LEASE, FT. 1287

21. ELEVATIONS (Show whether DF, RT, GR, etc.)
5752 GR

23. PROPOSED CASING AND CEMENTING PROGRAM

SIZE OF HOLE	SIZE OF CASING	WEIGHT PER FOOT	SETTING DEPTH	QUANTITY OF CEMENT
9-7/8"	7-5/8"	20.00#	200	125 Sx.
6-3/4"	4-1/2"	9.50#	3100	300 Sx.

We propose to drill a 9-7/8" hole to 200 ft. and run new 7-5/8", 20.00#, H-40 casing to T.D. It will be cemented from 200 ft. to surface with approx. 125 sacks of class "B" with 2% Ca Cl. We will then drill a 6-3/4" hole through the Chacra zone to a T.D. of about 3100 ft. using mud. New 4-1/2", 9.50#, K-55 casing will be run to 3100 ft. and cemented with 150 sacks of 50-50 poz mix containing 1/4# Cello Flake per sack and 2% gel and followed with 150 sacks of class "B" cement. The well will be perforated and stimulated in the Chacra and Fruitland zones and a packer set between the zones. Tubing will be run to the Chacra. The Fruitland will be produced through 4-1/2" casing.

The Well will be drilled on acreage dedicated to a gas transporter.
IN ABOVE SPACE DESCRIBE PROPOSED PROGRAM: If proposal is to deepen or plug back, give data on present productive zone and proposed new productive zone. If proposal is to drill or deepen directionally, give pertinent data on subsurface locations and measured and true vertical depths. Give blowout preventer program, if any.

24. SIGNED Kenneth E. Roddy TITLE Production Superintendent DATE August 8, 1979
(This space for Federal or State office use)

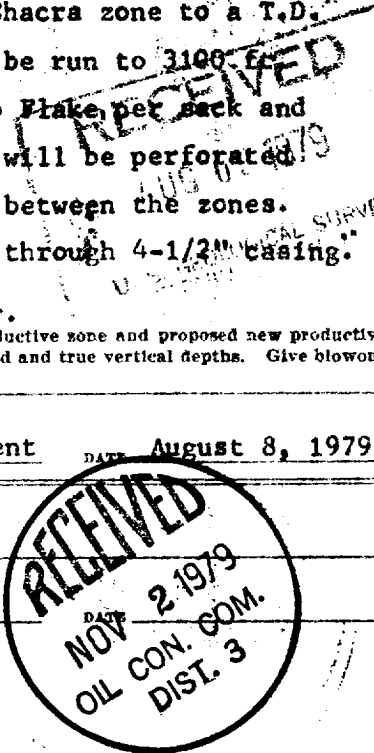
PERMIT NO. _____ APPROVAL DATE _____

APPROVED BY _____ TITLE _____
CONDITIONS OF APPROVAL, IF ANY:

oh Fred NMAC

5. LEASE DESIGNATION AND SERIAL NO.
SF-047017 (A)
6. IF INDIAN, ALLOTTEE OR TRIBE NAME
7. UNIT AGREEMENT NAME
8. FARM OR LEASE NAME
Angel Peak
9. WELL NO.
22
10. FIELD AND POOL, OR WILDCAT
Kutz Fruitland Ext.
Bloomfield Chacra ext
11. SEC. T., R., M., OR BLK.
AND SURVEY OR AREA
Sec. 12, T-28N, R-11W
N.M.P.M.
12. COUNTY OR PARISH
San Juan
13. STATE
New Mexico

16. NO. OF ACRES IN LEASE
402.34
17. NO. OF ACRES ASSIGNED
TO THIS WELL
192.97
19. PROPOSED DEPTH
3100'
20. ROTARY OR CABLE TOOLS
Rotary
22. APPROX. DATE WORK WILL START*
11/1/79



**NEW MEXICO OIL CONSERVATION COMMISSION
WELL LOCATION AND ACREAGE DEDICATION PLAT**

Form C-102
Supersedes C-128
Effective 1-1-65

All distances must be from the outer boundaries of the Section.

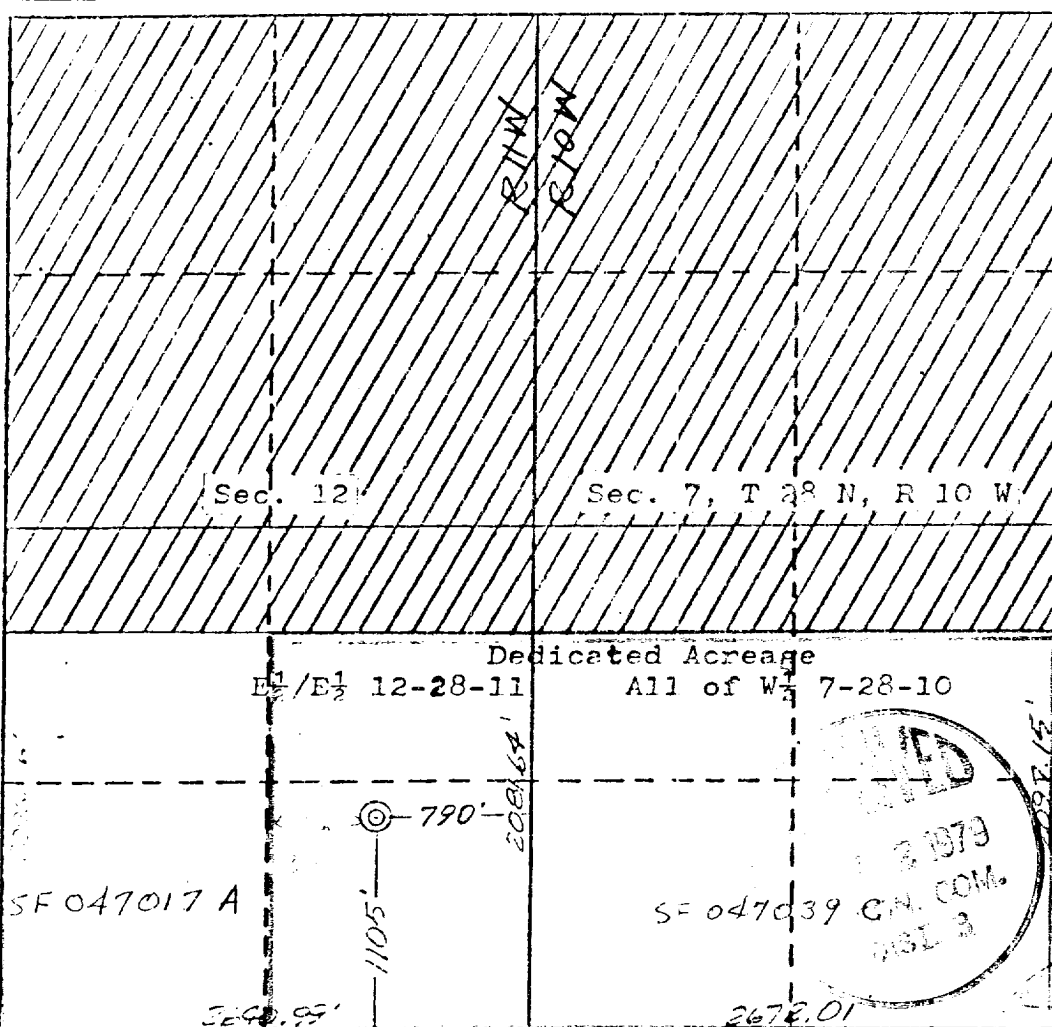
Operator SUPRON ENERGY CORPORATION			Lease ANGEL PEAK		Well No. 22
Unit Letter P	Section 12	Township 28 NORTH	Range 11 WEST	County SAN JUAN	
Actual Footage Location of Well: <div style="display: flex; justify-content: space-between;"> 1105 feet from the SOUTH line and 790 feet from the EAST line </div>					
Ground Level Elev. 5752	Producing Formation Bloomfield Pool Chacra Kutz Extension Pool Fruitland			Dedicated Acreage: 192.97 Acres	

1. Outline the acreage dedicated to the subject well by colored pencil or hatchure marks on the plat below.
2. If more than one lease is dedicated to the well, outline each and identify the ownership thereof (both as to working interest and royalty).
3. If more than one lease of different ownership is dedicated to the well, have the interests of all owners been consolidated by communitization, unitization, force-pooling, etc?

☐ Yes ☐ No If answer is "yes," type of consolidation _____

If answer is "no," list the owners and tract descriptions which have actually been consolidated. (Use reverse side of this form if necessary.) _____

No allowable will be assigned to the well until all interests have been consolidated (by communitization, unitization, forced-pooling, or otherwise) or until a non-standard unit, eliminating such interests, has been approved by the Commission.



CERTIFICATION

I hereby certify that the information contained herein is true and complete to the best of my knowledge and belief.

Rudy D. Motto

Name
Rudy D. Motto
Position

Area Superintendent

Company
SUPRON ENERGY CORPORATION

Date
July 11, 1979

I hereby certify that the well location shown on this plat is plotted from field notes, actual survey made by me or under my supervision, and that the same is true to the best of my knowledge and belief.

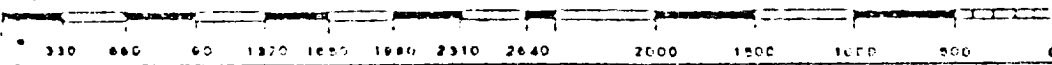
JAMES P. LEESE

Date Surveyed
10 July 1979

Registered Professional Engineer and/or Land Surveyor

James P. Leese

Certificate No.
1463

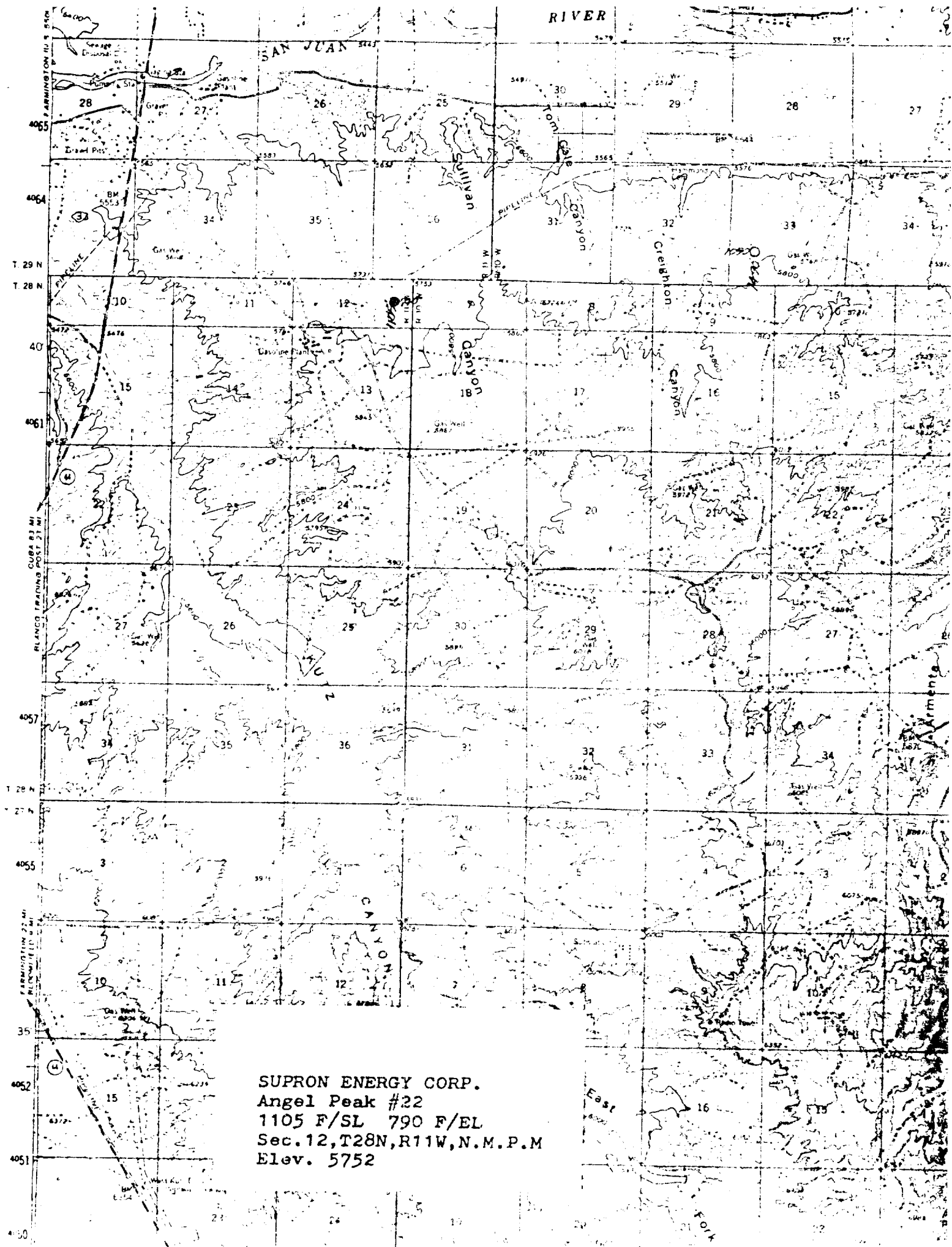


SUPRON ENERGY CORPORATION

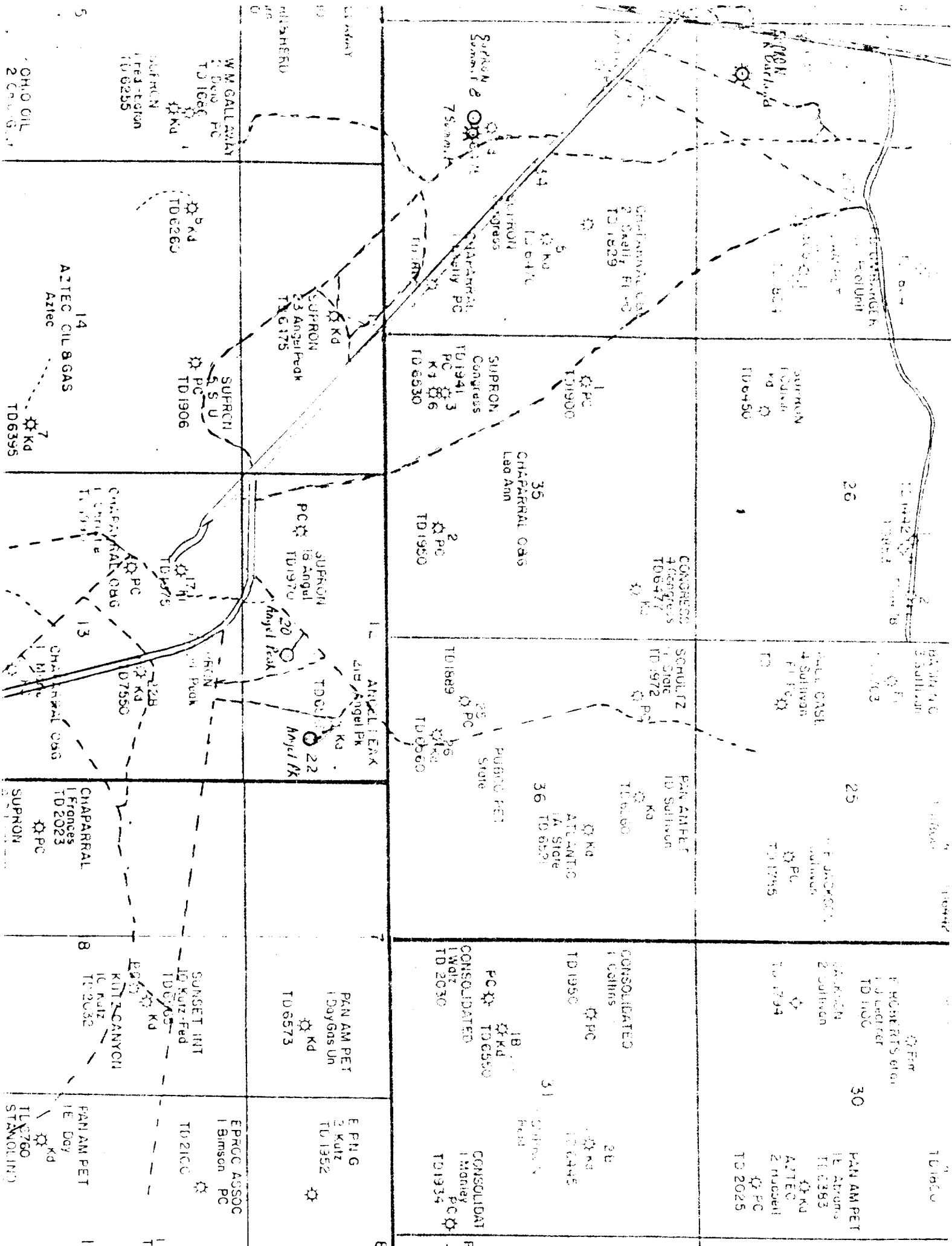
ANGEL PEAK NO. 22
1105'/S; 790'/E Line
Sec. 12, T-28N, R-11W
San Juan County, N. Mex.

SUPPLEMENT TO FORM 9-331C

1. The Geologic name of the surface formation is "Wasatch".
2. The estimated tops of important Geologic markers are:
 - A. Base of Ojo Alamo - - - - - 1290
 - B. Top of Fruitland - - - - - 1605
 - C. Top of Pictured Cliffs - - - - - 1810
 - D. Top of Chacra - - - - - 2390
3. The estimated depth at which anticipated water, oil, or other mineral - bearing formations are expected to be encountered are:
 - A. Base of Ojo Alamo - - - - - 1290 - Water
 - B. Top of Fruitland - - - - - 1605 - Gas
 - C. Top of Pictured Cliffs - - - - - 1810 - Gas
 - D. Top of Chacra - - - - - 2390 - Gas
4. The casing program is shown on form 9-331C and all casing is new.
5. The lessee's pressure - control equipment schematics are attached, along with minimum specifications, testing procedures, and frequencies.
6. The type, estimated volumes, and characteristics of the circulating media are as follows:
 - A. 0 - 200 Feet - Natural mud.
 - B. 200 - 3100 Feet - Permaloid non-dispersed mud containing 167 sx. gel, 67 sx. permaloid, 10 sx. C.M.C.
7. The auxiliary equipment to be used will be floats at the bit and a sub on the floor with a full-opening valve to be stabbed into the drill pipe when the kelly is not in the string.
8. This well is in an area which is partially developed; therefore we will not have a testing and coring program. The logging program will be as follows:
 - A. E.S. Induction
 - B. Gamma Ray Density
 - C. Gamma Ray Correlation
 - D. Cement Bond Log
9. We do not expect to find any abnormal pressures, temperatures or hydrogen sulphide problems in this partially - developed area.
10. The anticipated starting date for this well is 11/1/79.

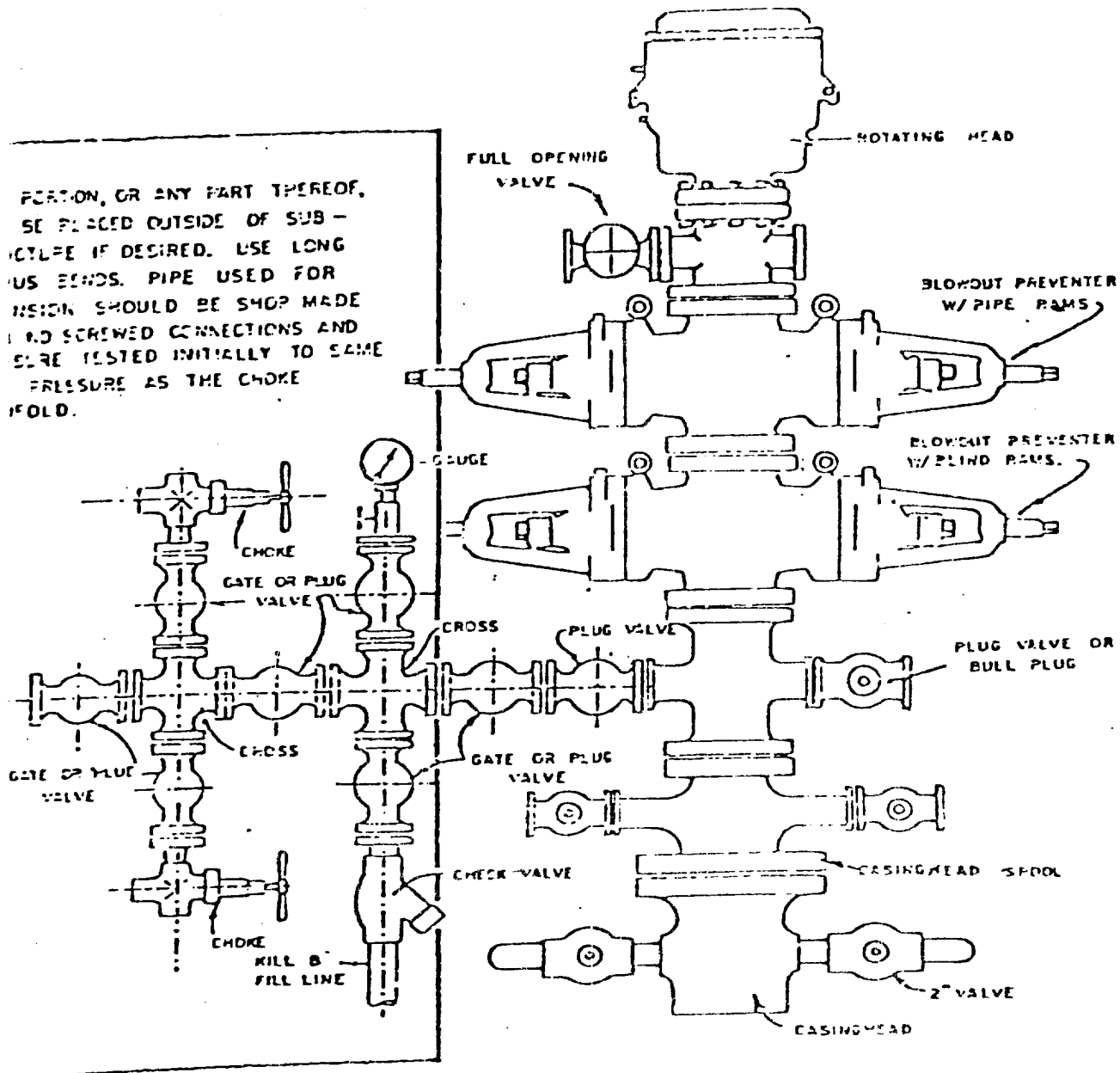


SUPRON ENERGY CORP.
Angel Peak #22
1105 F/SL 790 F/EL
Sec. 12, T28N, R11W, N.M.P.M
Elev. 5752

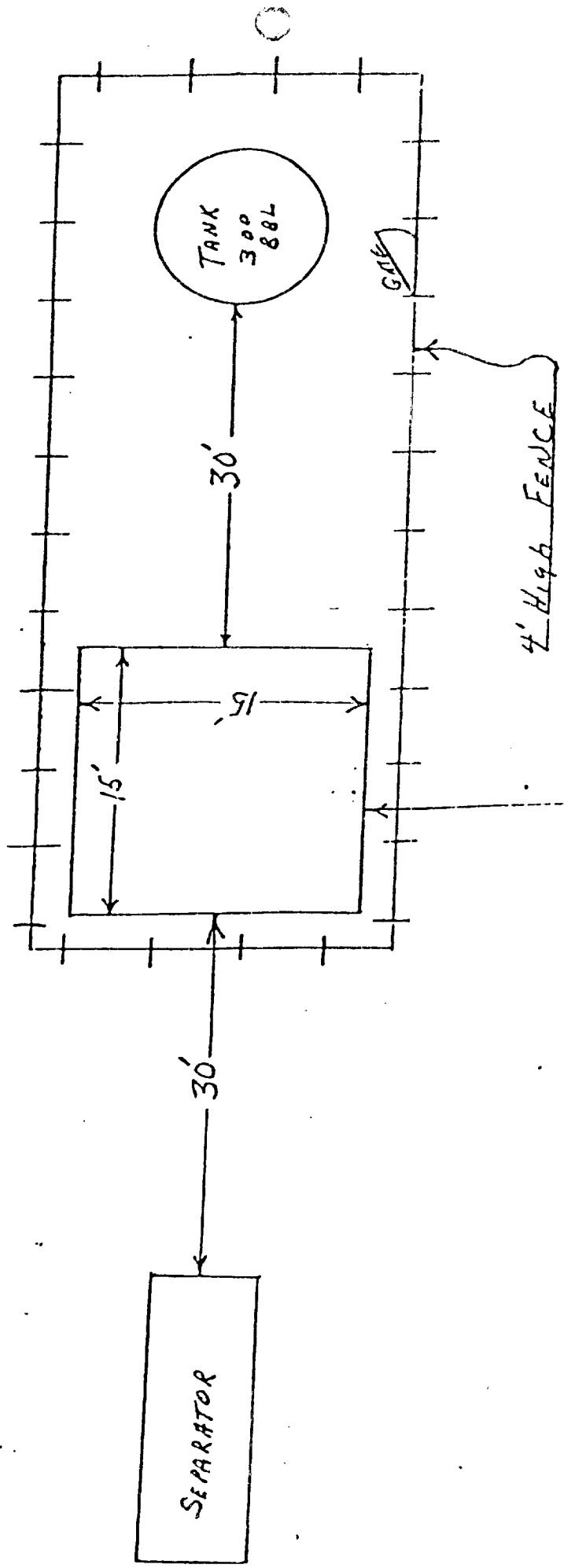


Blowout Preventer will be tested daily and prior to drilling out with the results to be logged on the drillers report.

The B.O.P. and all valve and fittings are rated at 3000 psi working pressure, and hydraulically operated



BLOWOUT PREVENTER HOOKUP

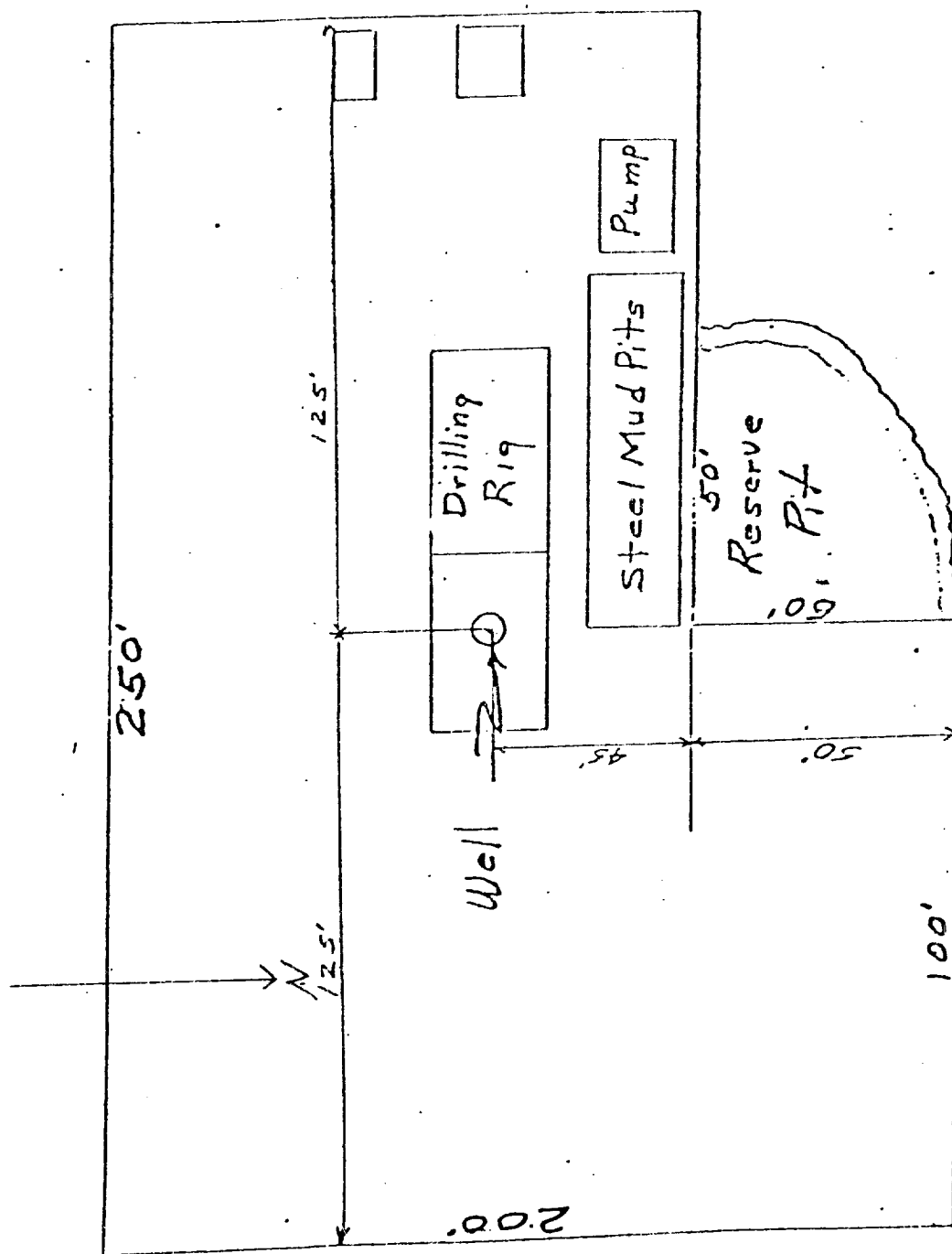


70' ————— X WELL HEAD

SUPRON ENERGY CORPORATION
LOCATION AND EQUIPMENT LAYOUT

ANGEL PEAK NO. 22

1105 Feet from the South line and 790 feet from the East line of Section 12, Township 28 North, Range 11 West, N.M.P.M., San Juan County, New Mexico.




SUPRON ENERGY CORPORATION

Post Office Box 808

FARMINGTON, NEW MEXICO 87401

I hereby certify that I, or persons under my direct supervision, have inspected the proposed drillsite and access route; that I am familiar with the conditions which presently exist; that the statements made in this plan are, to the best of my knowledge, true and correct; and, that the work associated with the operations proposed herein will be performed by SUPRON ENERGY CORPORATION and its contractors subcontractors in conformity with this plan and the terms and conditions under which it is approved.

SUPRON ENERGY CORPORATION

A handwritten signature in cursive script, reading "Rudy D. Motto".

Rudy D. Motto
Area Superintendent
Phone: 325-3587

SUPRON ENERGY CORPORATION

ANGEL PEAK NO. 22

1105'/S; 790'/E Line

Sec. 12, T-28N, R-11W

San Juan County, N. Mex.

The following attachments are included with this application:

1. Topographical map showing proposed location and access road.
2. Planned access road is 1200 feet long and will be no wider than 20 feet. The road will follow the natural contours of the land and will have drainage facilities installed to meet the requirements of NTL-6. No extra surfacing materials will be used.
3. Map showing existing producing facilities and access roads.
4. Location of surface equipment if required.
5. Drilling and completion water will be obtained from the San Juan River.
6. All pits will be fenced and constructed in such a way as to prevent litter on the location.
7. We will dispose of all waste by placing it in the reserve pit and burying it when the well is completed.
8. There will be no camp at or near the well site.
9. There will be no air strip.
10. A plat is attached showing the location of the rig, mud tanks, reserve pit, burn pit, etc.
11. A letter of certification is attached. The operator representative for compliance purposes is Rudy D. Motto, Area Superintendent, P.O. Box 808, Farmington, New Mexico 87401. Phone (505) 325-3587.
12. After the well is completed, the location will be cleaned up, and bladed. The reserve pit will be allowed to dry and then filled and restored to its natural state.
13. The soil is sandy loam with principal vegetation being Sagebrush, Pinon, and Juniper.