

Unrecorded Location
NEW MEXICO OIL CONSERVATION COMMISSION
WELL LOCATION AND ACREAGE DEDICATION PLAT

Form 7-10,
Supersedes 6-10
Effective 1-1-77

All distances must be from the outer boundaries of the Section.

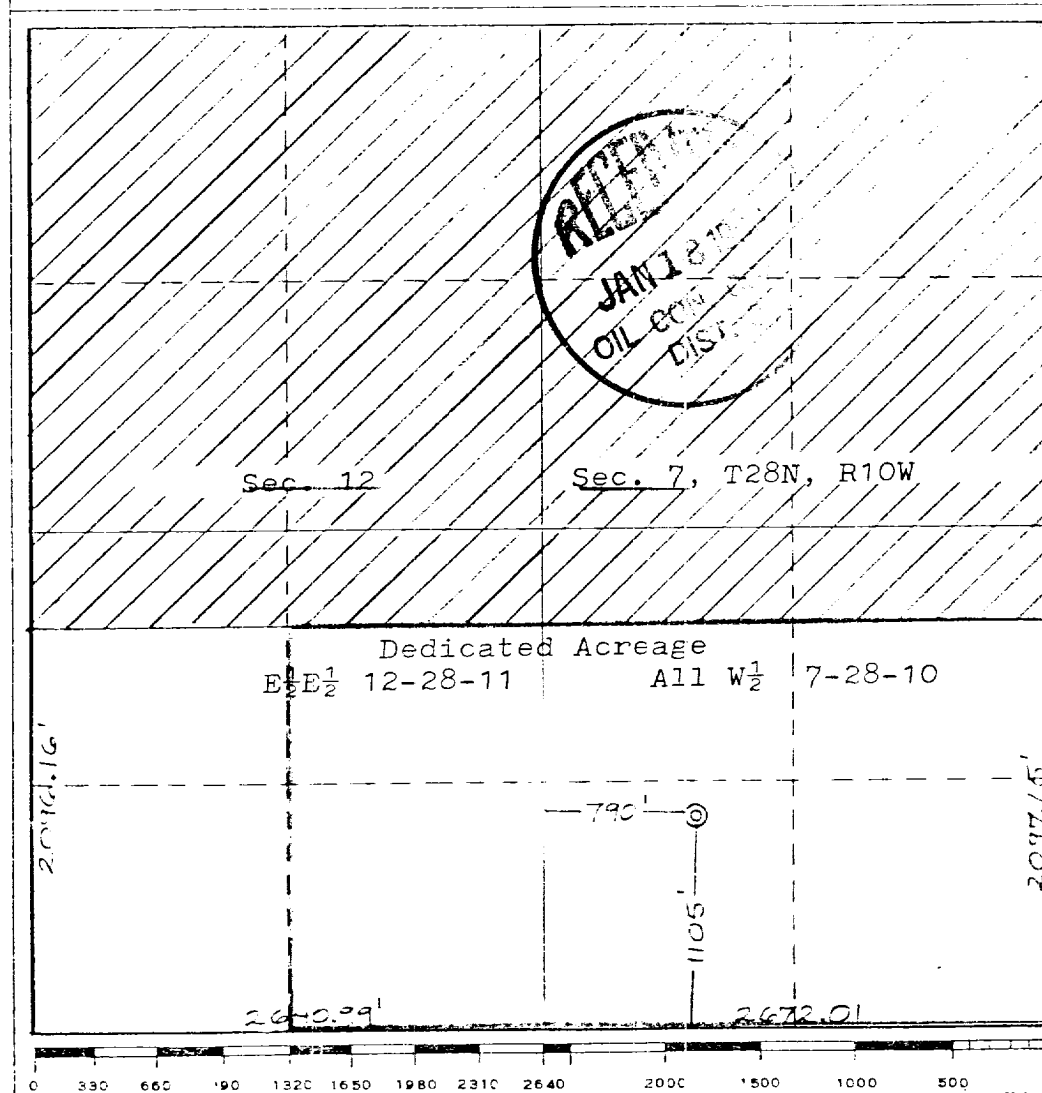
Operator SUPRON ENERGY CORPORATION			Lease ANGEL PEAK		Well No. 22
Unit Letter M	Section 7	Township 28 NORTH	Range 10 WEST	County SAN JUAN COUNTY	
Actual Footage Location of Well: 1105 feet from the SOUTH line and 790 feet from the WEST line					
Ground Lve. Elev. 5752	Producing Formation BLOOMFIELD KUTZ EXTENSION		Pool CHACRA FRUITLAND	Dedicated Acreage: 192.97 Acres	

1. Outline the acreage dedicated to the subject well by colored pencil or hachure marks on the plat below.
2. If more than one lease is dedicated to the well, outline each and identify the ownership thereof (both as to working interest and royalty).
3. If more than one lease of different ownership is dedicated to the well, have the interests of all owners been consolidated by communitization, unitization, force-pooling, etc?

☐ Yes ☐ No If answer is "yes," type of consolidation _____

If answer is "no," list the owners and tract descriptions which have actually been consolidated. (Use reverse side of this form if necessary.) _____

No allowable will be assigned to the well until all interests have been consolidated (by communitization, unitization, forced-pooling, or otherwise) or until a non-standard unit, eliminating such interests, has been approved by the Commission.



CERTIFICATION

I hereby certify that the information contained herein is true and complete to the best of my knowledge and belief.

Rudy D. Motto

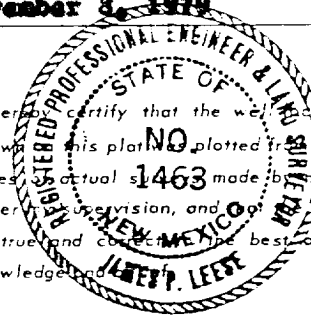
Name
Rudy D. Motto

Position
Area Superintendent

Company
SUPRON ENERGY CORPORATION

Date
November 8, 1979

I hereby certify that the well location shown on this plat was plotted from field notes, actual survey, or under my supervision, and that the same is true and correct to the best of my knowledge and belief.



Date Surveyed
July 10, 1979

Registered Professional Engineer and/or Land Surveyor

James P. Leese
James P. Leese

Certificate No.
1463