

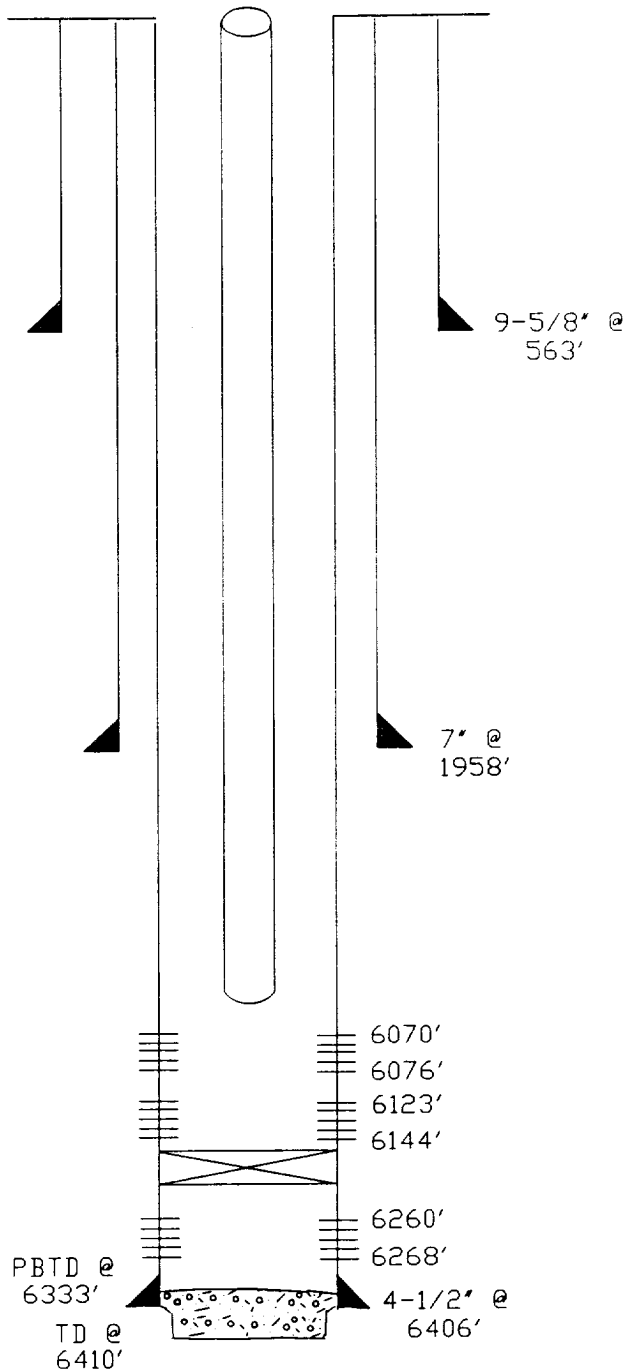
BASIN (DAKOTA)

OHIO GOVERNMENT WELL NO. 2-E

1865' FSL & 955' FWL
SECTION 15, T-28-N, R-11-W
SAN JUAN COUNTY, NEW MEXICO

STATUS: SHUT-IN

TD: 6410' PBD: 6333'
GL: 5625' KB: 5635'



SURFACE: 9-5/8", 36#, K-55 SET @ 563'. CMT'D W/270 SX. CIRC TO SURFACE.

INTERMEDIATE: 7", 20#, K-55 SET @ 1958'. CMT'D W/250 SX. TOC UNKNOWN.

SURFACE: 4-1/2", 10.5# & 11.6#, K-55 SET @ 6406'. CMT'D W/725 SX. TOC UNKNOWN.

PRESENT COMPLETION: DAKOTA

6070'-76' & 6123'-44'.

HISTORY: DRILLED IN SEPTEMBER, 1980. COMPLETED IN DAKOTA F/6260'-68'. FLOWED 1700 MCFPD, 20 BCPD, & 7 BWPD. ISOLATED PERFS W/DRILLABLE BRIDGE PLUG. ADDED PERFORATIONS F/6123'-44'. F/50000 GALS & 73000# 20/40 SD. SET CEMENT RETAINER @ 6090'. ADDED PERFORATIONS F/6070'-6076'. F/18000 GALS & 23000# 20/40 SD. DRILLED OUT RETAINER & BRIDGE PLUG. WELL WOULD NOT FLOW. SET CEMENT RETAINER @ 6245' IN JANUARY, 1981. WELL FLOWED @ 161 MCFPD, 1/2 BCPD, & 2 BWPD. WELL WAS PLACED ON LINE IN JULY, 1983. WELL FLOWED FOR 30 MINUTES AND DIED. COULD NOT SWAB THE WELL TO FLOW.

PREPARED BY B. D. LOCKHART