

UNITED STATES  
DEPARTMENT OF THE INTERIOR  
GEOLOGICAL SURVEY

## APPLICATION FOR PERMIT TO DRILL, DEEPEN, OR PLUG BACK

1a. TYPE OF WORK

DRILL ☒DEEPEN ☐PLUG BACK ☐

b. TYPE OF WELL

OIL  
WELL ☐GAS  
WELL ☒

OTHER

SINGLE  
ZONE ☒MULTIPLE  
ZONE ☐

2. NAME OF OPERATOR

SUPRON ENERGY CORPORATION

3. ADDRESS OF OPERATOR

P.O. Box 808, Farmington, New Mexico 87401

4. LOCATION OF WELL (Report location clearly and in accordance with any State requirements.)\*

At surface

1065 ft. from the South line and 1535 ft. from the West line

At proposed prod. zone

Same as above.

14. DISTANCE IN MILES AND DIRECTION FROM NEAREST TOWN OR POST OFFICE\*

3.5 miles southwest of Blanco, New Mexico

15. DISTANCE FROM PROPOSED\*

LOCATION TO NEAREST

PROPERTY OR LEASE LINE, FT.

(Also to nearest drlg. unit line, if any)

1065 ft.

1065 ft.

18. DISTANCE FROM PROPOSED LOCATION\*

TO NEAREST WELL, DRILLING, COMPLETED,  
OR APPLIED FOR, ON THIS LEASE, FT.

175 ft.

16. NO. OF ACRES IN LEASE

2284.30

19. PROPOSED DEPTH

3245

17. NO. OF ACRES ASSIGNED  
TO THIS WELL134.36 SW $\frac{1}{4}$ 

20. ROTARY OR CABLE TOOLS

Rotary

21. ELEVATIONS (Show whether DF, RT, GR, etc.)

5842 GR.

22. APPROX. DATE WORK WILL START\*

September 15, 1980

23.

## PROPOSED CASING AND CEMENTING PROGRAM

SIZE OF HOLE	SIZE OF CASING	WEIGHT PER FOOT	SETTING DEPTH	QUANTITY OF CEMENT
9-7/8"	7-5/8"	26.40	200 ft.	100 sx circulated
6-3/4"	2-7/8"	6.50	3245 ft.	395 sx

This action is subject to administrative  
appeal pursuant to 30 CFR 299.

We plan to drill 9-7/8" hole to approximately 200 ft. Run 7-5/8" surface casing and cement the casing in the hole. The cement will be circulated. The casing will then be tested. Drill out w/6-3/4" bit to T.D. of approximately 3245 ft. Run 2-7/8" casing and cement in the hole. Pressure test the casing. Perforate and fracture the Chacra zone. Clean the well up and nipple down the wellhead. Test the well and connect to a gathering system.

The gas from this well has been dedicated to a transporter.

DRILLING OPERATIONS AUTHORIZED ARE  
SUBJECT TO COMPLIANCE WITH ATTACHED  
"GENERAL REQUIREMENTS"

IN ABOVE SPACE DESCRIBE PROPOSED PROGRAM: If proposal is to deepen or plug back, give data on present productive zone and proposed new productive zone. If proposal is to drill or deepen directionally, give pertinent data on subsurface locations and measured and true vertical depths. If blowout preventer program, if any.

24.

SIGNED

  
Rudy D. Motto

TITLE Area Superintendent

DATE July 29, 1980

(This space for Federal or State office use)

PERMIT NO.

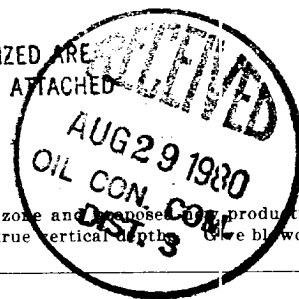
APPROVAL DATE

APPROVED BY

CONDITIONS OF APPROVAL, IF ANY:

TITLE

DATE



NMCCC

All distances given to be from the outer boundaries of the Section.

Section			Lease		Well No.
SUPRON ENERGY CORPORATION			ZACHRY		25
Unit Letter	Section	Township	Range	County	
N	12	28 NORTH	10 WEST	SAN JUAN	
Actual Footage Location of Well:					
1065 feet from the		SOUTH	line and	1535	feet from the WEST line
Ground Level Elev.	Inducing Formation		Pool	Dedicated Acreage	
5842	Chacra		Bloomfield Extension	SW 1/4 134.36 acres	

1. Outline the acreage dedicated to the subject well by colored pencil or hatchure marks on the plat below.

2. If more than one lease is dedicated to the well, outline each and identify the ownership thereof (both as to working interest and royalty).

3. If more than one lease of different ownership is dedicated to the well, have the interests of all owners been consolidated by communitization, unitization, force-pooling, etc?

☐ Yes ☐ No If answer is "yes," type of consolidation \_\_\_\_\_

If answer is "no," list the owners and tract descriptions which have actually been consolidated. (Use reverse side of this form if necessary.) \_\_\_\_\_

No allowable will be assigned to the well until all interests have been consolidated (by communitization, unitization, forced-pooling, or otherwise) or until a non-standard well eliminating such interests, has been approved by the Division.

CERTIFICATION

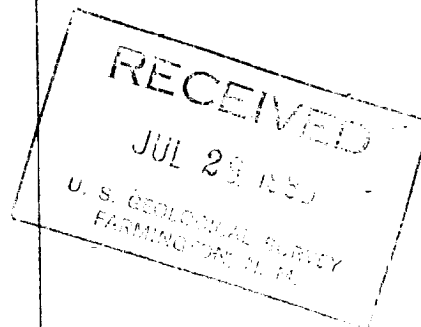
I hereby certify that the information contained herein is true and complete to the best of my knowledge and belief.

*Rudy D. Motto*  
Rudy D. Motto

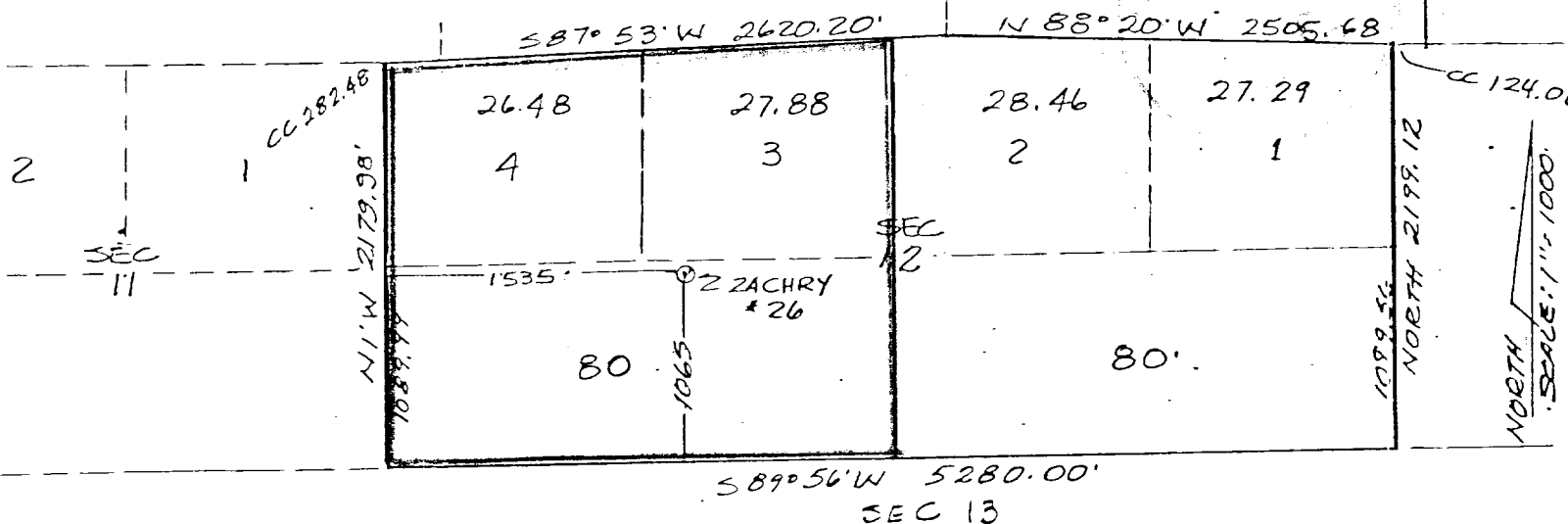
Name  
Area Superintendent  
Position  
SUPRON ENERGY CORPORATION  
Company  
July 14, 1980  
Date

I hereby certify that the location shown on this plat was plotted from field notes, actual NO. 1463, and that some is correct to the best of my knowledge and belief.

Date Surveyed  
June 19, 1980  
Registered Professional Engineer  
and/or Land Surveyor  
*James P. Leese*  
James P. Leese  
Certificate No.  
1463



SEVENTH STANDARD PARALLEL NORTH



SUPRON ENERGY CORPORATION  
ZACHRY No. 26  
SW ¼ Sec. 12, T-28N, R-10W, N.M.P.M.  
San Juan County, New Mexico

1. The Geologic name of the surface formation is "Wasatch".
2. The estimated tops of important Geologic markers are:
  - A. Top of the Ojo Alamo - - - - - 990 ft.
  - B. Top of the Fruitland - - - - - 1830 ft.
  - C. Top of the Pictured Cliffs - - - - - 2055 ft.
  - D. Top of the Chacra- - - - - 3045 ft.
3. The estimated depth at which anticipated water, oil or other mineral bearing formations are expected to be encountered are:
  - A. Top of the Ojo Alamo - - - - - 990 ft. - - Water
  - B. Top of the Fruitland - - - - - 1830 ft. - - Water
  - C. Top of the Pictured Cliffs - - - - - 2055 ft. - - Gas
  - D. Top of the Chacra- - - - - 3045 ft. - - Gas
4. The casing program is shown on 9-331 C and all casing is new.
5. The lessee's pressure control equipment schematics are attached along with minimum specifications, testing procedures and frequencies.
6. The type, estimated volumes and characteristics of the circulating medium are as follows:
  - A. 0 to 200 ft. Natural mud
  - B. 200 to 3245 ft. Permaloid non dispersed mud containing approx. 67 sx of Permaloid and 10 sx of C.M.C.
7. The auxiliary equipment will be floats at the bit and a sub on the floor with a full opening valve to be stabbed into the drill pipe when the kelly is not in the string.
8. This well is in an area which is heavily developed; therefore we will not have a testing or coring program. The logging program is as follows:
  - A. E.S. Induction
  - B. Gamma Ray Density
  - C. Gamma Ray Correlation
  - D. Cement Bond or Temperature
9. We do not expect to find any abnormal pressures, temperatures or hydrogen sulfide problems in this heavily developed area.
10. The anticipated starting date for this well is September 15, 1980, dependent on rig availability.

SUPRON ENERGY CORPORATION  
ZACHRY NO. 26  
SW/4 Sec. 12, T-28N, R-10W, N.M.P.M.  
San Juan County, New Mexico

The following attachments are included with this application:

1. Topographical map showing the proposed location and access road.
2. Planned access road is not required.
3. Map showing existing production facilities and access roads.
4. Location of surface equipment if required.
5. Drilling and completion water will be obtained from the San Juan River.
6. All pits will be fenced and constructed in such a manner as to prevent litter on the location.
7. We will dispose of all waste by placing it in the reserve pit and burying it when the well is completed.
8. There is no camp at or near the site.
9. There is no air strip.
10. A plat is attached showing the location of the rig, mud tanks, reserve pit, burn pit and etc.
11. A letter of certification is attached. The operators representative for compliance purposes is Rudy D. Motto, Area Superintendent, P.O. Box 808, Farmington, New Mexico 87401. Phone (505) 325-3587.
12. After the well is completed, the location will be cleaned up and bladed. The reserve pit will be allowed to dry, then be filled and restored to its natural state.
13. The soil is sandy clay loam with the principal vegetation being snakeweed and sagebrush.

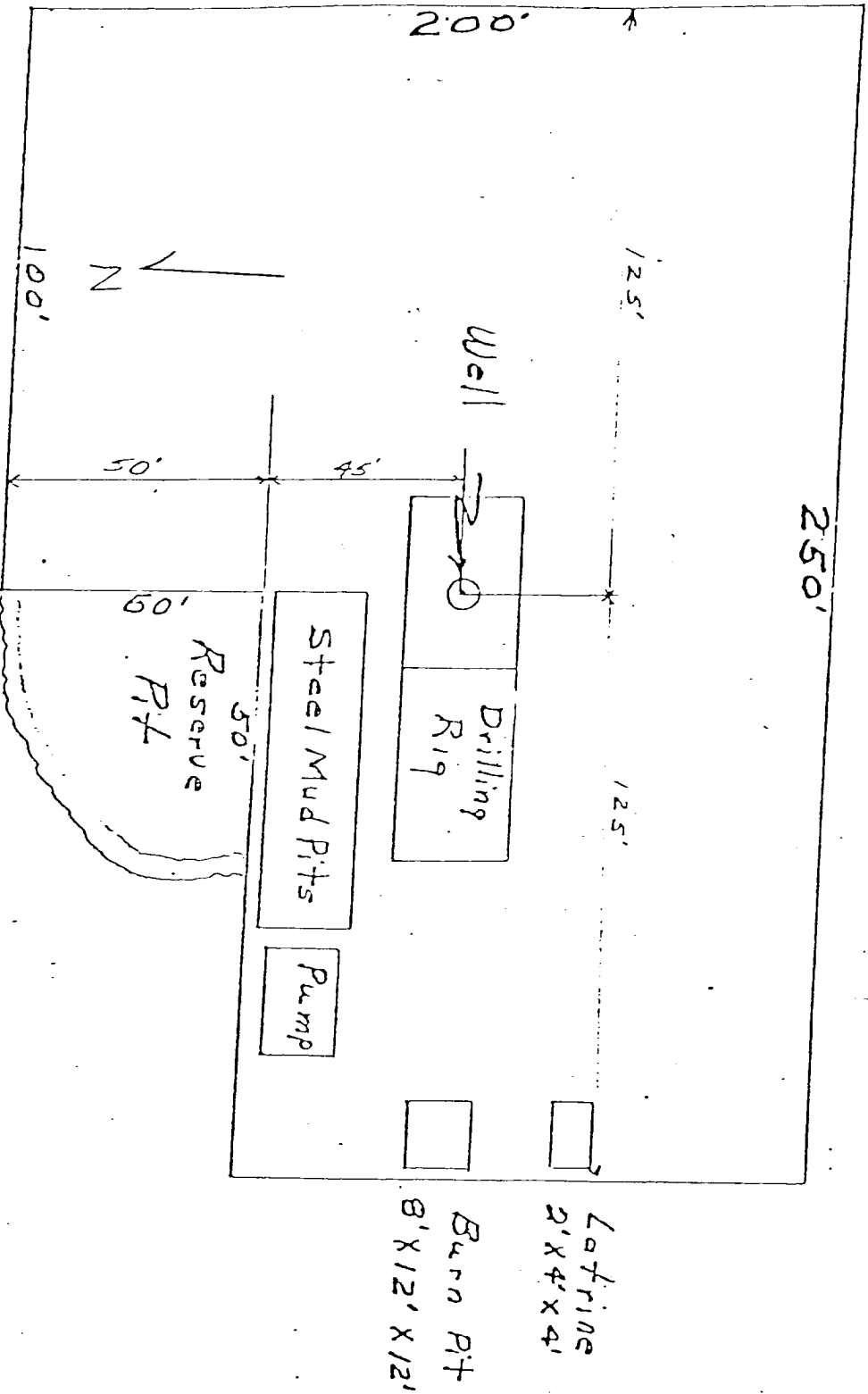


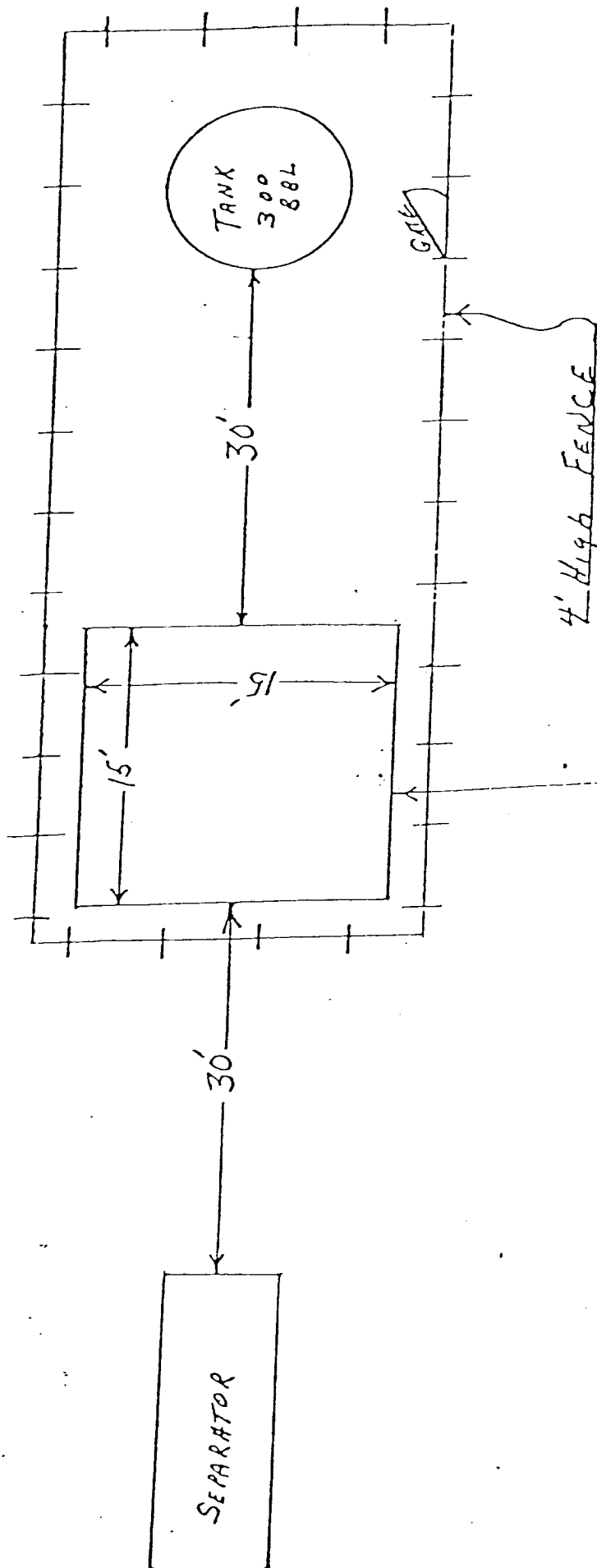
# LOCATION AND EQUIPMENT LAYOUT

SUPRON ENERGY CORPORATION

ZACHRY NO. 26

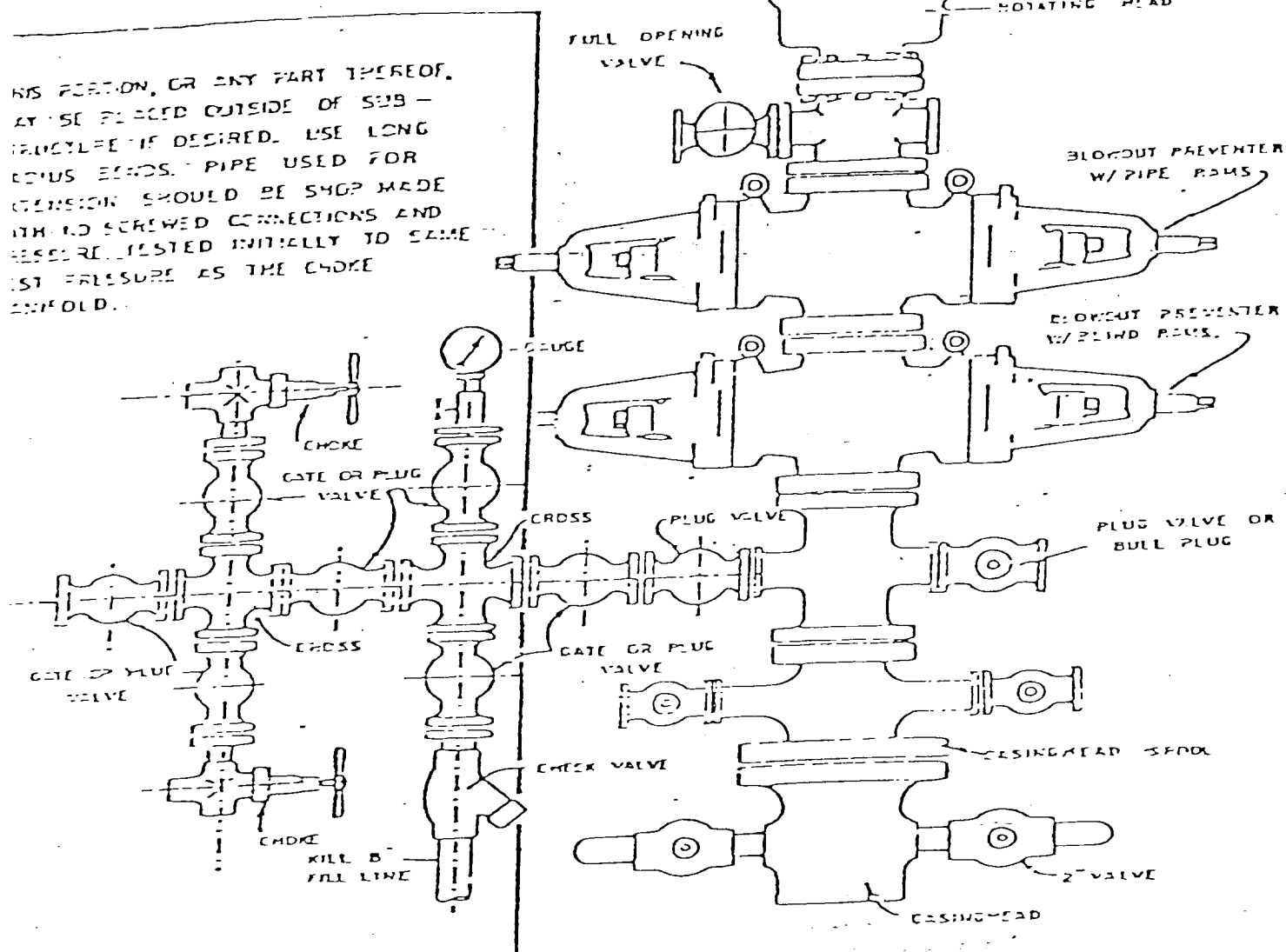
1065 Ft./South; 1535 Ft./West line  
Sec. 12, T-28N, R-10W, N.M.P.M.,  
San Juan County, New Mexico





Blowout Preventer will be tested daily and prior to drilling out with the results to be logged on the drillers report.

The B.O.P. and all valve and fittings are rated at 3000 psi working pressure, and hydraulically operated



BLOWOUT PREVENTER HOCKUP



SUPRON ENERGY CORPORATION  
Post Office Box 808  
FARMINGTON, NEW MEXICO 87401

I hereby certify that I, or persons under my direct supervision, have inspected the proposed drillsite and access route; that I am familiar with the conditions which presently exist; that the statements made in this plan are, to the best of my knowledge, true and correct; and, that the work associated with the operations proposed herein will be performed by SUPRON ENERGY CORPORATION and its contractors subcontractors in conformity with this plan and the terms and conditions under which it is approved.

SUPRON ENERGY CORPORATION



Rudy D. Motto  
Area Superintendent  
Phone: 325-3587