

UNITED STATES  
DEPARTMENT OF THE INTERIOR  
GEOLOGICAL SURVEY

## APPLICATION FOR PERMIT TO DRILL, DEEPEN, OR PLUG BACK

## 1a. TYPE OF WORK

DRILL ☐DEEPEN ☐PLUG BACK ☐

## b. TYPE OF WELL

OIL  
WELL ☐GAS  
WELL ☒

OTHER

SINGLE  
ZONE ☒MULTIPLE  
ZONE ☐

## 2. NAME OF OPERATOR

SUPRON ENERGY CORPORATION

## 3. ADDRESS OF OPERATOR

P. O. Box 808, Farmington, New Mexico 87401

## 4. LOCATION OF WELL (Report location clearly and in accordance with any State requirements.)\*

At surface

1874 ft. FSL &amp; 1850 ft. FEL.

At proposed prod. zone

Same as above.

## 14. DISTANCE IN MILES AND DIRECTION FROM NEAREST TOWN OR POST OFFICE\*

2-1/2 miles South of Bloomfield, New Mexico.

## 15. DISTANCE FROM PROPOSED

LOCATION TO NEAREST

PROPERTY OR LEASE LINE, FT.

(Also to nearest drlg. unit line, if any)

270 ft.

270 ft.

## 18. DISTANCE FROM PROPOSED LOCATION\*

TO NEAREST WELL, DRILLING, COMPLETED,

OR APPLIED FOR, ON THIS LEASE, FT.

700 feet

## 16. NO. OF ACRES IN LEASE

1183.91

## 19. PROPOSED DEPTH

1800 Ft.

17. NO. OF ACRES ASSIGNED  
TO THIS WELL

99.02 98.87

## 20. ROTARY OR CABLE TOOLS

Rotary

## 21. ELEVATIONS (Show whether DF, RT, GR, etc.)

5554 Gr.

## 22. APPROX. DATE WORK WILL START\*

January 15, 1980

## 23. PROPOSED CASING AND CEMENTING PROGRAM

SIZE OF HOLE	SIZE OF CASING	WEIGHT PER FOOT	SETTING DEPTH	QUANTITY OF CEMENT
9-7/8"	7-5/8"	26.40	200 ft.	100 sx circulated
6-3/4"	2-7/8"	6.50	1800 ft.	300 sx cover the Ojo Alamo

It is proposed to drill 9-7/8" surface hole to approximately 200 ft. Run 7-5/8" surface pipe and cement the pipe. Cement will be circulated to surface. The casing will be tested. Drill 6-3/4" hole to T.D. of approximately 1800 feet and run 2-7/8" casing. Cement, pressure test and perforate the casing. Fracture the Pictured Cliffs zone to stimulate production. Clean well up and nipple down wellhead. Test well and connect to a gathering system.

The gas from this well is dedicated to a transporter.

\* This drilling unit covers Lot 3 and 4 of Section 11 and Lot 2 of Section 10, T-28N, R-11W, N.M.P.M.

IN ABOVE SPACE DESCRIBE PROPOSED PROGRAM: If proposal is to deepen or plug back, give data on present productive zone and proposed new productive zone. If proposal is to drill or deepen directionally, give pertinent data on subsurface locations and measured and true vertical depths. Give blowout preventer program, if any.

24.

SIGNED

Rudy D. Motto

TITLE Area Superintendent

DATE October 14, 1980

(This space for Federal or State office use)

PERMIT NO.

APPROVAL DATE

APPROVED BY

TITLE

DATE

CONDITIONS OF APPROVAL, IF ANY:

Brian Wamley

NW 1446  
R-1446  
HOLDING  
for NW 1446



WELL LOCATION AND ACREAGE DEDICATION PLAT

Supr. 10-1-80  
Effective 1-1-81

All distances must be from the outer boundaries of the Section.

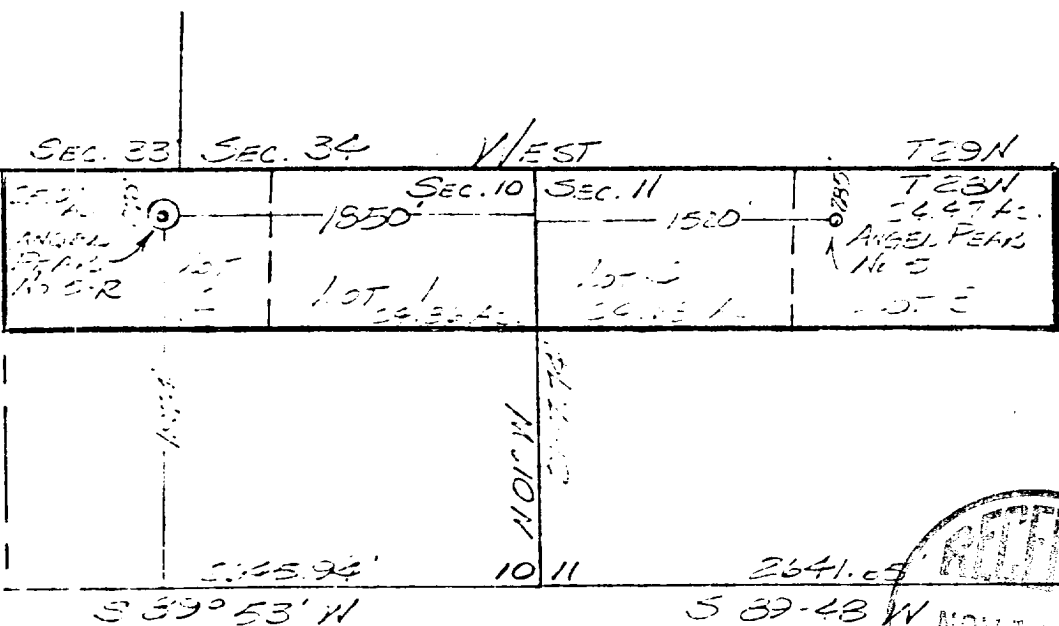
SUPRON ENERGY CORPORATION		Lease		ANGEL PEAK		Well No.	
Section		Township		Range		County	
10		28 NORTH		11 WEST		SAN JUAN	
Feetage Location of Well:							
1874 feet from the		SOUTH line and		1850 feet from the		EAST line	
Ground Level Elev.		Producing Formation		Pool		Dedicated Acreage:	
5554		Pictured Cliffs		Fulcher Kutz		98.87 - 99.02	

1. Outline the acreage dedicated to the subject well by colored pencil or hatchure marks on the plat below.
2. If more than one lease is dedicated to the well, outline each and identify the ownership thereof (both as to working interest and royalty).
3. If more than one lease of different ownership is dedicated to the well, have the interests of all owners been consolidated by communitization, unitization, force-pooling, etc?

☐ Yes ☐ No If answer is "yes," type of consolidation \_\_\_\_\_

If answer is "no," list the owners and tract descriptions which have actually been consolidated. (Use reverse side of this form if necessary.) \_\_\_\_\_

No allowable will be assigned to the well until all interests have been consolidated (by communitization, unitization, forced-pooling, or otherwise) or until a non-standard unit, eliminating such interests, has been approved by the Commission.



CERTIFICATION

I hereby certify that the information contained herein is true and complete to the best of my knowledge and belief.

*Rudy D. Motto*  
Name

Rudy D. Motto

Position

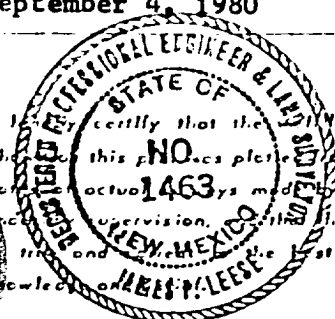
Area Superintendent

Company

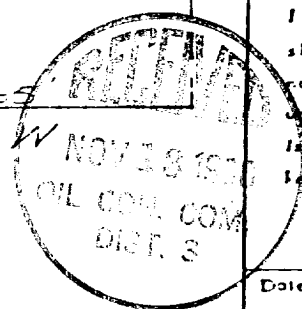
Supron Energy Corporation

Date

September 4, 1980



I hereby certify that the well location shown on this NO. 1463 plat is in the field and is correct. I have supervised the same in the field and to the best of my knowledge and belief.



Date Surveyed

September 3, 1980

Registered Professional Engineer and/or Land Surveyor

*James P. Leese*  
James P. Leese

Certificate No.

1463

