

UNITED STATES
DEPARTMENT OF THE INTERIOR
GEOLOGICAL SURVEY

APPLICATION FOR PERMIT TO DRILL, DEEPEN, OR PLUG BACK

1a. TYPE OF WORK DRILL <input type="checkbox"/> DEEPEN <input type="checkbox"/> PLUG BACK <input type="checkbox"/>		5. LEASE DESIGNATION AND SERIAL NO. 30-045-24830 SF 044535-B NM-020498A	
b. TYPE OF WELL OIL WELL <input type="checkbox"/> GAS WELL <input checked="" type="checkbox"/> OTHER <input type="checkbox"/>		7. UNIT AGREEMENT NAME Pool Unit 14-08-0001-7294	
2. NAME OF OPERATOR Supron Energy Corporation		8. FARM OR LEASE NAME Eaton Federal	
3. ADDRESS OF OPERATOR P.O. Box 808, Farmington, New Mexico 87401		9. WELL NO. 1-E	
4. LOCATION OF WELL (Report location clearly and in accordance with any State requirements.)* At surface 1110 Ft./North; 885 ft./West line D At proposed prod. zone Same as above		10. FIELD AND POOL, OR WILDCAT Basin Dakota	
14. DISTANCE IN MILES AND DIRECTION FROM NEAREST TOWN OR POST OFFICE* 3 Miles Southwest of Bloomfield, New Mexico		11. SEC., T., R., M., OR BLK. AND SURVEY OR AREA Sec. 15, T-28N, R-11W N.M.P.M.	
15. DISTANCE FROM PROPOSED* LOCATION TO NEAREST PROPERTY OR LEASE LINE, FT. (Also to nearest drlg. unit line, if any) 790 Feet		12. COUNTY OR PARISH San Juan	
16. NO. OF ACRES IN LEASE 160.00 ⁸⁰		13. STATE New Mexico	
17. NO. OF ACRES ASSIGNED TO THIS WELL N/2 320.00		18. DISTANCE FROM PROPOSED* LOCATION TO NEAREST WELL, DRILLING, COMPLETED, OR APPLIED FOR, ON THIS LEASE, FT. 3525 Feet	
19. PROPOSED DEPTH 6400		20. ROTARY OR CABLE TOOLS Rotary	
21. ELEVATIONS (Show whether DF, RT, GR, etc.) 5556 GR		22. APPROX. DATE WORK WILL START* February 15, 1981	

23. PROPOSED CASING AND CEMENTING PROGRAM

SIZE OF HOLE	SIZE OF CASING	WEIGHT PER FOOT	SETTING DEPTH	QUANTITY OF CEMENT
12-1/4"	8-5/8"	24.00	250	150 Sx. Circulated
7-7/8"	4-1/2"	10.50	6400	950 Sx. Cover the Ojo Alamo

DRILLING AND CEMENTING ARE
SUBJECT TO APPROVAL BY THE ATTACHED
"GENERAL ORDER" COMMENTS

This action is subject to administrative
appeal pursuant to 30 CFR 290.

We desire to drill 12-1/4" hole to approximately 250 ft. Run new 8-5/8" surface casing. Cement in place and circulate cement to surface. Pressure test casing. Drill 7-7/8" hole to approx. 6400 ft. using mud as a circulating medium. Log well. Run new 4-1/2", 10.50# casing with D.V. tools at approximately 4160 ft. and at approximately 2850 ft. Cement first stage with approximately 300 sx of 50-50 poz. Cement the second stage with approximately 200 sx. of 50-50 poz followed by 50 sx of class "B" cement and cement the third stage with approximately 350 sx of 65-35-6 followed by 50 sx of 50-50 poz. Drill out D.V. tools. Pressure test casing. Perforate the Dakota zone. Fracture the formation. Clean well up. Run tubing nipple down the wellhead. Test well and connect to a gathering system.

This gas has previously been dedicated to a transporter.

IN ABOVE SPACE DESCRIBE PROPOSED PROGRAM: If proposal is to deepen or plug back, give data on present productive zone and proposed new productive zone. If proposal is to drill or deepen directionally, give pertinent data on subsurface locations and measured and true vertical depths. Give blowout preventer program, if any.

24. SIGNED Rudy D. Motto TITLE Area Superintendent DATE January 7, 1981

(This space for Federal or State office use)

PERMIT NO. APPROVED AS AMENDED APPROVAL DATE APPROVED

APPROVED BY JAMES F. SIMS TITLE DISTRICT ENGINEER DATE FEB 02 1981

CONDITIONS OF APPROVAL APPROVED

NMOCC

**NEW MEXICO OIL CONSERVATION COMMISSION
WELL LOCATION AND ACREAGE DEDICATION PLAT**

Form C-102
Supersedes C-128
Effective 1-1-65

All distances must be from the outer boundaries of the Section.

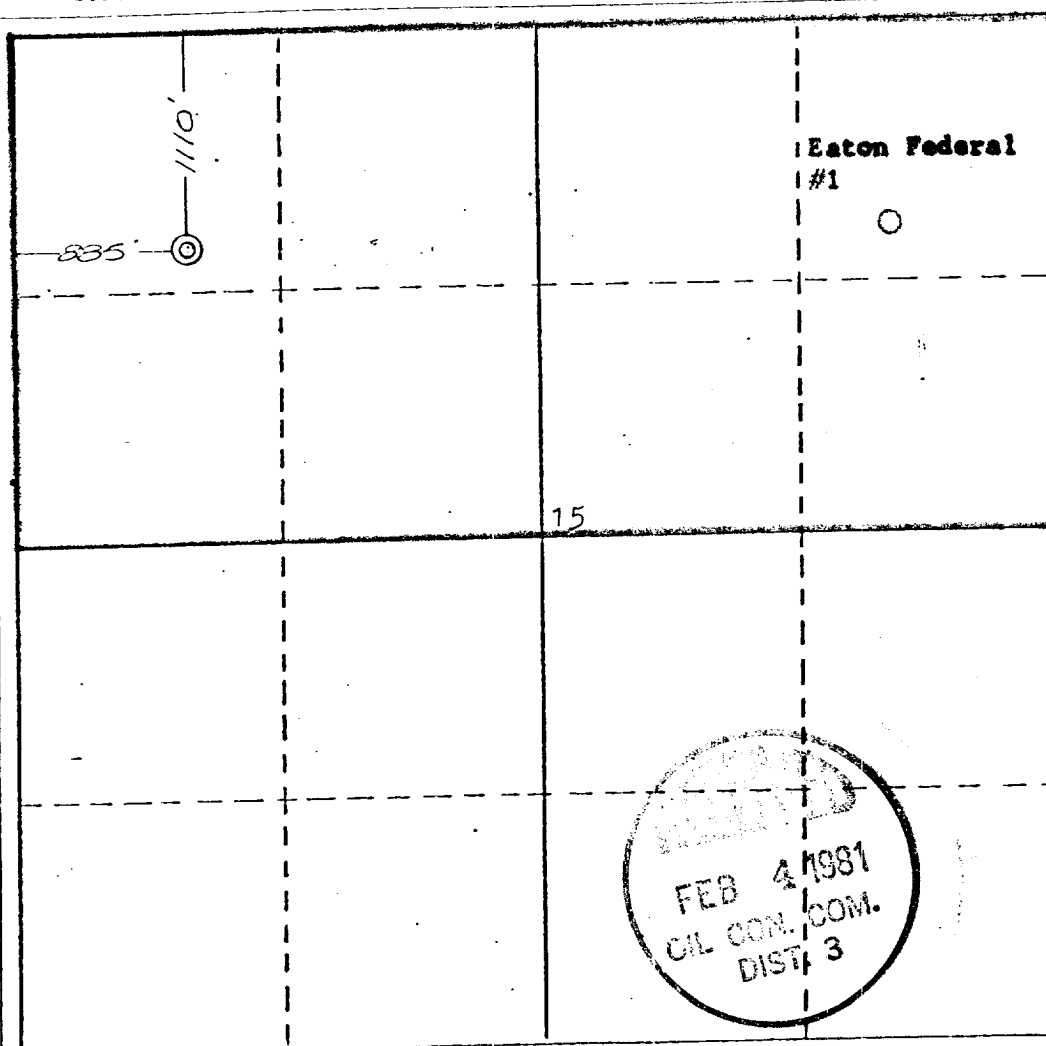
Operator SUPRON ENERGY CORPORATION			Lease EATON FEDERAL		Well No. 1-E
Unit Letter D	Section 15	Township 28 NORTH	Range 11 WEST	County SAN JUAN	
Actual Footage Location of Well: 1110 feet from the NORTH line and 885 feet from the WEST line					
Ground Level Elev. 5556	Producing Formation DAKOTA		Pool BASIN	Dedicated Acreage: N/2 320 Acres	

1. Outline the acreage dedicated to the subject well by colored pencil or hachure marks on the plat below.
2. If more than one lease is dedicated to the well, outline each and identify the ownership thereof (both as to working interest and royalty).
3. If more than one lease of different ownership is dedicated to the well, have the interests of all owners been consolidated by communitization, unitization, force-pooling, etc?

☐ Yes ☐ No If answer is "yes," type of consolidation _____

If answer is "no," list the owners and tract descriptions which have actually been consolidated. (Use reverse side of this form if necessary.) _____

No allowable will be assigned to the well until all interests have been consolidated (by communitization, unitization, forced-pooling, or otherwise) or until a non-standard unit, eliminating such interests, has been approved by the Commission.



CERTIFICATION

I hereby certify that the information contained herein is true and complete to the best of my knowledge and belief.

Rudy D. Motto

Name

Rudy D. Motto

Position

Area Superintendent

Company

Supron Energy Corporation

Date

November 10, 1980

Date Surveyed

November 6, 1980

Registered Professional Engineer
and/or Land Surveyor

James P. Leese

James P. Leese

Certificate No.

1463

4068

4065

4064

T 29 N

T 28 N

4063

4061

4060

4059

4058

4057

4056

4055

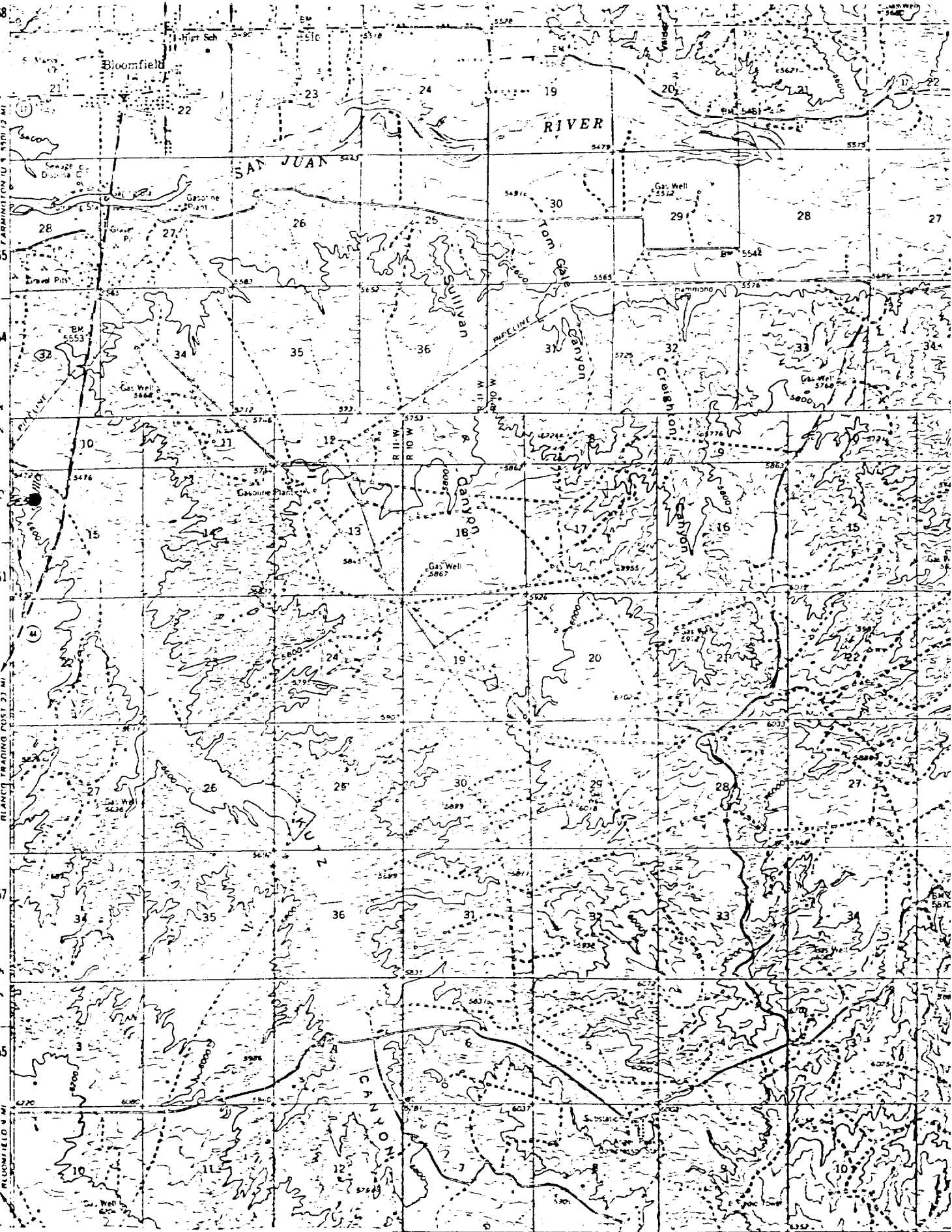
4054

4053

4052

4051

4050



Supron Energy Corporation
 Eaton Federal 1-E
 NW $\frac{1}{4}$, Sec. 15, T28N, R11W, N.M.P.M.
 San Juan County, New Mexico