

Submit to Appropriate
District Office
State Lease - 4 copies
Fee Lease - 3 copies

State of New Mexico
Energy, Minerals and Natural Resources Department

Form C-102
Revised 1-1-89

OIL CONSERVATION DIVISION

P.O. Box 2088

Santa Fe, New Mexico 87504-2088

DISTRICT I
P.O. Box 1980, Hobbs, NM 88240

DISTRICT II
P.O. Drawer DD, Artesia, NM 88210

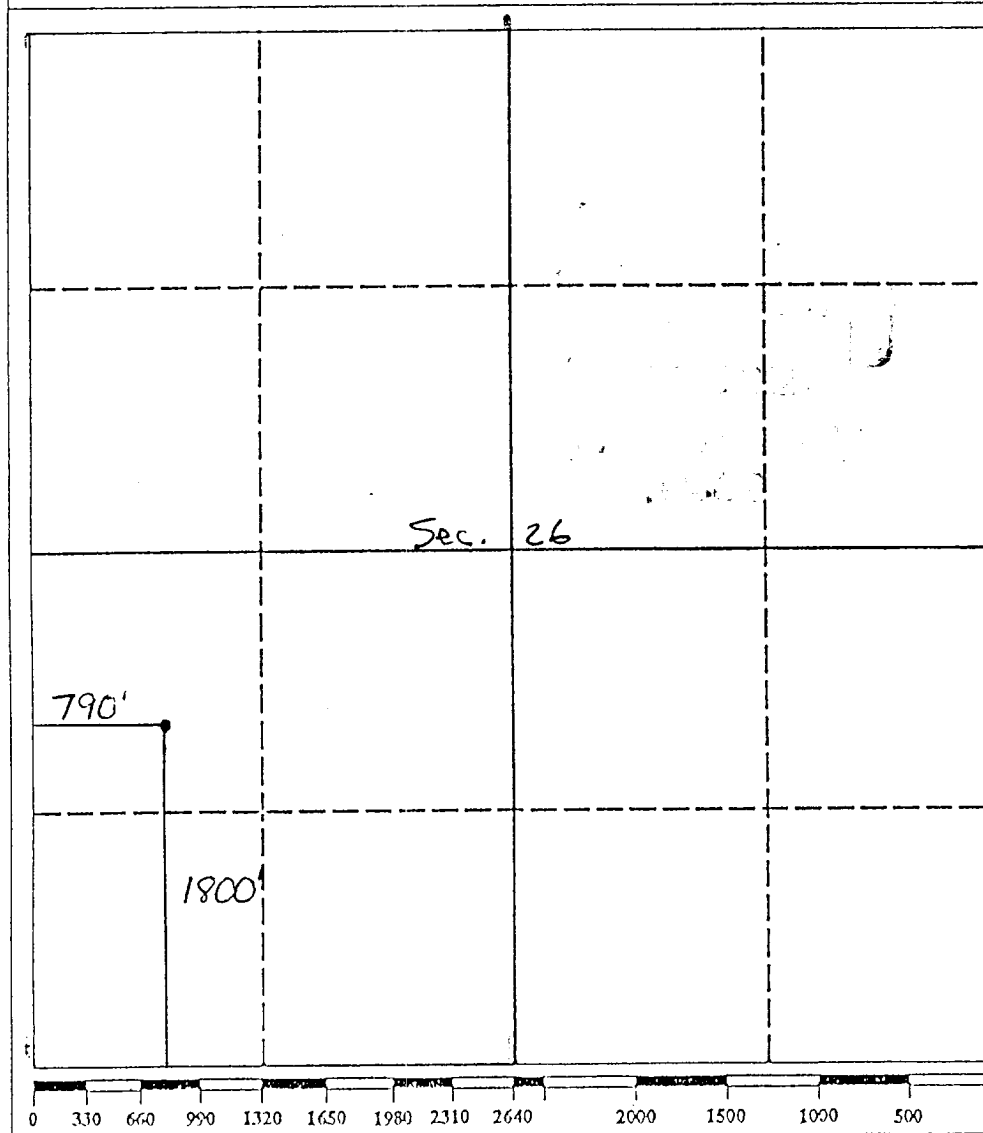
DISTRICT III
1000 Rio Brazos Rd., Aztec, NM 87410

WELL LOCATION AND ACREAGE DEDICATION PLAT

All Distances must be from the outer boundaries of the section

| | | | | | |
|--|---------------------------------------|-----------------|----------------------------------|-------------------------|-------------------------------------|
| Operator Amoco Production Company | | | Lease Omber A | | Well No. #11 |
| Unit Letter L | Section 26 | Township 28N | Range 10W | County NMPM San Juan | |
| Actual Footage Location of Well: 1800' feet from the FSL line and 790' feet from the FWL line | | | | | |
| Ground level Elev. 5828' KB | Producing Formation Fruitland Coal | | Pool Basin Fruitland Coal Gas | | Dedicated Acreage: 320 W/2 Acres |

- Outline the acreage dedicated to the subject well by colored pencil or hatchure marks on the plat below.
- If more than one lease is dedicated to the well, outline each and identify the ownership thereof (both as to working interest and royalty).
- If more than one lease of different ownership is dedicated to the well, have the interest of all owners been consolidated by communitization, unitization, force-pooling, etc.?
☐ Yes ☐ No If answer is "yes" type of consolidation _____
If answer is "no" list the owners and tract descriptions which have actually been consolidated. (Use reverse side of this form if necessary.)
No allowable will be assigned to the well until all interests have been consolidated (by communitization, unitization, forced-pooling, or otherwise) or until a non-standard unit, eliminating such interest, has been approved by the Division.



OPERATOR CERTIFICATION

I hereby certify that the information contained herein is true and complete to the best of my knowledge and belief.

Signature

J. L. Hampton /w/eh

Printed Name

J. L. Hampton

Position

Sr. Staff Admin. Supr.

Company

Amoco Prod. Co.

Date

5/13/92

SURVEYOR CERTIFICATION

I hereby certify that the well location shown on this plat was plotted from field notes of actual surveys made by me or under my supervision, and that the same is true and correct to the best of my knowledge and belief.

Date Surveyed

"on file"

Signature & Seal of
Professional Surveyor

Certificate No.