

UNITED STATES  
DEPARTMENT OF THE INTERIOR  
GEOLOGICAL SURVEY

30-045-25363

## APPLICATION FOR PERMIT TO DRILL, DEEPEN, OR PLUG BACK

## 1a. TYPE OF WORK

DRILL ☒DEEPEN ☐PLUG BACK ☐

## b. TYPE OF WELL

OIL  
WELL ☐GAS  
WELL ☒

OTHER

SINGLE  
ZONE ☒MULTIPLE  
ZONE ☐

## 2. NAME OF OPERATOR

Southland Royalty Company

## 3. ADDRESS OF OPERATOR

P. O. Drawer 570, Farmington, New Mexico 87499-0570

## 4. LOCATION OF WELL (Report location clearly and in accordance with any State requirements.)\*

At surface

1050' FNL &amp; 1070' FEL

At proposed prod. zone

## 14. DISTANCE IN MILES AND DIRECTION FROM NEAREST TOWN OR POST OFFICE\*

5 Miles South of Blanco, New Mexico

## 15. DISTANCE FROM PROPOSED\*

LOCATION TO NEAREST  
PROPERTY OR LEASE LINE, FT.  
(Also to nearest drlg. unit line, if any)

1050'

18. DISTANCE FROM PROPOSED LOCATION\*  
TO NEAREST WELL, DRILLING, COMPLETED,  
OR APPLIED FOR, ON THIS LEASE, FT.

250'

## 16. NO. OF ACRES IN LEASE

2258.46

## 19. PROPOSED DEPTH

3220'

17. NO. OF ACRES ASSIGNED  
TO THIS WELL

160

## 20. ROTARY OR CABLE TOOLS

Rotary

## 21. ELEVATIONS (Show whether DF, RT, GR, etc.)

5884' GL

## 22. APPROX. DATE WORK WILL START\*

April 15, 1982

## 23.

## PROPOSED CASING AND CEMENTING PROGRAM

SIZE OF HOLE	SIZE OF CASING	WEIGHT PER FOOT	SETTING DEPTH	QUANTITY OF CEMENT
12-1/4"	8-5/8"	24#	200'	165 cu.ft. (Circulate to surface)
7-7/8" 202900'			<del>2500'</del>	
6-3/4"	2-7/8"	6.5#	2000'-3220'	999 cu.ft. (Cover Ojo Alamo)

Surface formation is Nacimiento.

Top of Ojo Alamo sand is at 861'.

Top of Pictured Cliffs sand is at 2006'.

Fresh water mud will be used to drill from surface to total depth.

It is anticipated that an IEL will be run from total depth to surface casing and  
GR-Density be run from Total Depth to 1500'.

No abnormal pressures or poisonous gases are anticipated in this well.

It is expected that this well will be drilled before June 1, 1982.

This depends on time required for approvals, rig availability and the weather.  
Gas is dedicated.

IN ABOVE SPACE DESCRIBE PROPOSED PROGRAM: If proposal is to deepen or plug back, give data on present productive zone and proposed new productive zone. If proposal is to drill or deepen directionally, give pertinent data on subsurface locations and measured and true vertical depths. Give blowout preventer program, if any.

## 24.

SIGNED

R. E. Fielder

TITLE District Engineer

(This space for Federal or State office use)

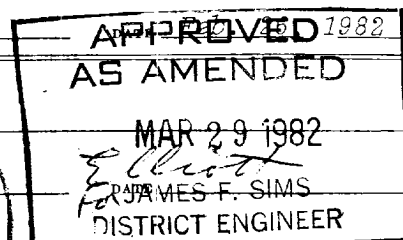
PERMIT NO.

APPROVAL DATE

APPROVED BY

TITLE

CONDITIONS OF APPROVAL, IF ANY:

DRILLING OPERATIONS AUTHORIZED ARE  
SUBJECT TO COMPLIANCE WITH ATTACHED  
'GENERAL REQUIREMENTS'

NMDC

This action is subject to administrative  
appeal pursuant to 30 CFR 290.

## OIL CONSERVATION DIVISION

STATE OF NEW MEXICO  
ENERGY AND MINERALS DEPARTMENT

P. O. BOX 2088

SANTA FE, NEW MEXICO 87501

Form C-102  
Revised 10-1-78

All distances must be from the outer boundaries of the Section.

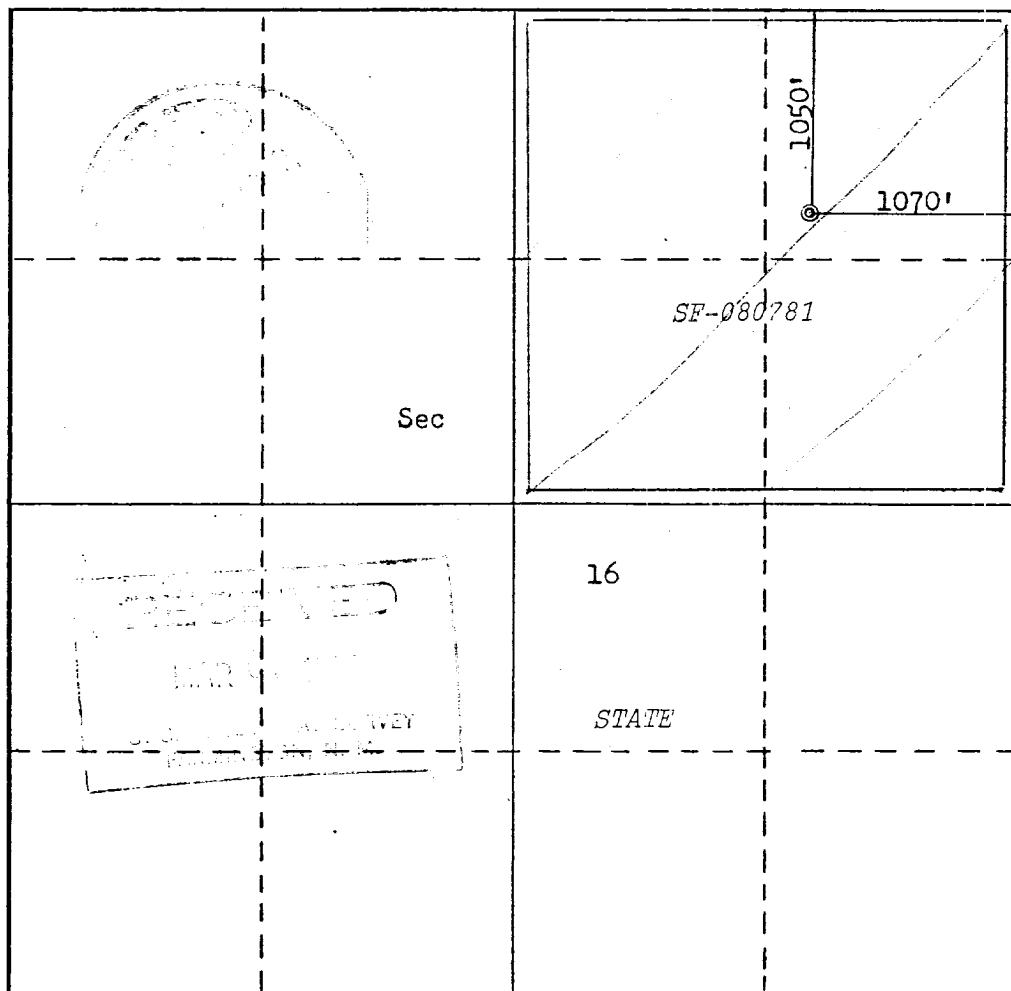
Operator <b>SOUTHLAND ROYALTY COMPANY</b>			Lease <b>CAIN</b>		Well No. <b>23</b>
Unit Letter <b>A</b>	Section <b>16</b>	Township <b>28N</b>	Range <b>10W</b>	County <b>San Juan</b>	
Actual Footage Location of Well: <b>1050</b> feet from the <b>North</b> line and <b>1070</b> feet from the <b>East</b> line					
Ground Level Elev. <b>5884</b>	Producing Formation <b>Chacra</b>	Poo. <b>Bloomfield</b>	Dedicated Acreage: <b>160</b>		Acres

1. Outline the acreage dedicated to the subject well by colored pencil or hachure marks on the plat below.
2. If more than one lease is dedicated to the well, outline each and identify the ownership thereof (both as to working interest and royalty).
3. If more than one lease of different ownership is dedicated to the well, have the interests of all owners been consolidated by communitization, unitization, force-pooling, etc?

☐ Yes ☐ No If answer is "yes," type of consolidation \_\_\_\_\_

If answer is "no," list the owners and tract descriptions which have actually been consolidated. (Use reverse side of this form if necessary.) \_\_\_\_\_

No allowable will be assigned to the well until all interests have been consolidated (by communitization, unitization, forced-pooling, or otherwise) or until a non-standard unit, eliminating such interests, has been approved by the Commission.



## CERTIFICATION

I hereby certify that the information contained herein is true and complete to the best of my knowledge and belief.

*R. E. Fielder*

Name

R. E. Fielder

Position

District Engineer

Company

Southland Royalty Company

Date

February 26, 1982

I hereby certify that the well location shown on this plat was plotted from field notes of actual surveys made by me or under my supervision, and that the same is true and correct to the best of my knowledge and belief.

Date Surveyed

January 26, 1982

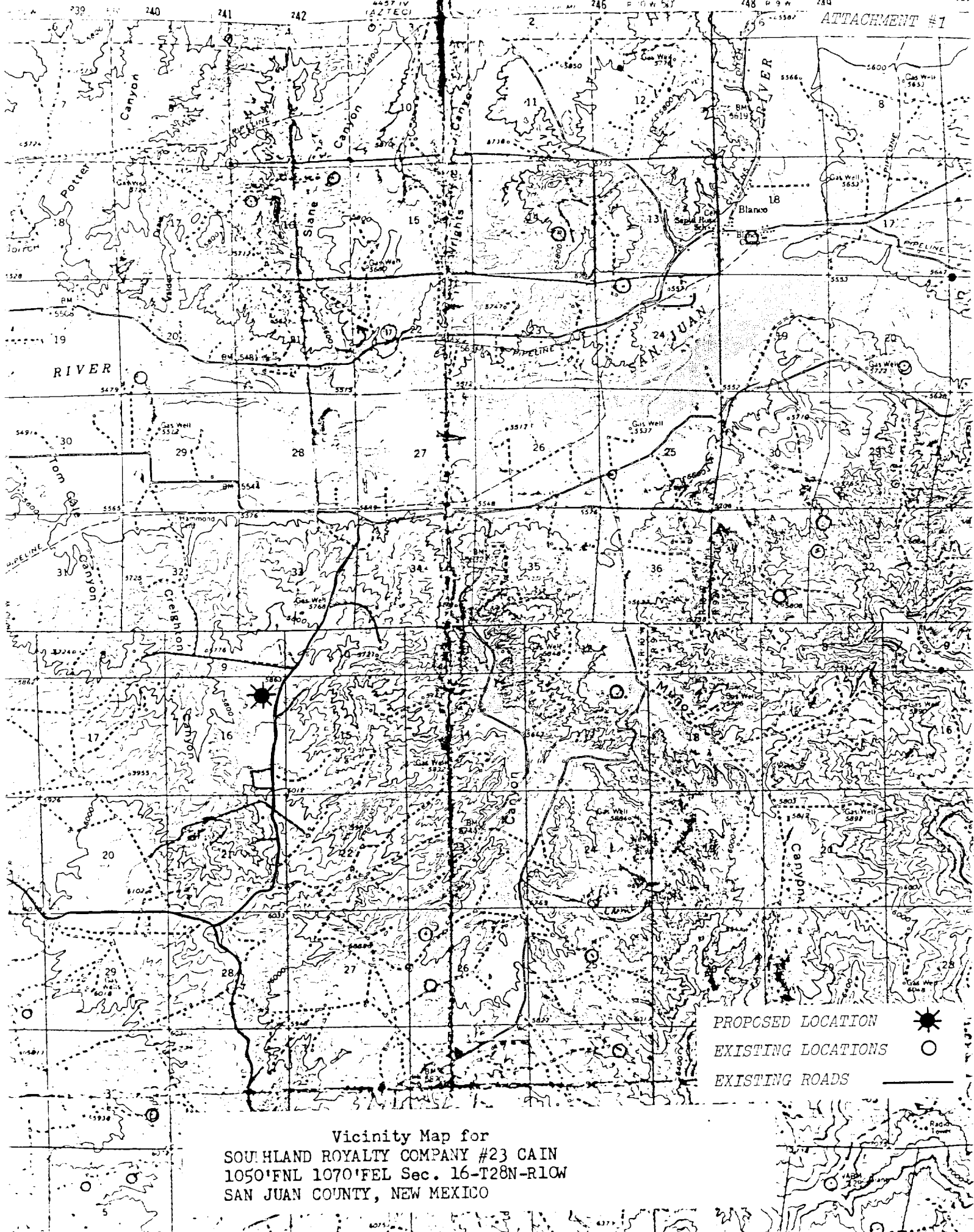
Registered Professional Engineer and/or Land Surveyor

*Fred B. Kerr Jr.*  
Fred B. Kerr Jr.

Certificate No.

3950

KERR, JR.



Vicinity Map for  
SOUTH LAND ROYALTY COMPANY #23 CAIN  
1050'FNL 1070'FEL Sec. 16-T28N-R10W  
SAN JUAN COUNTY, NEW MEXICO

PROPOSED LOCATION  
EXISTING LOCATIONS  
EXISTING ROADS