

UNITED STATES
DEPARTMENT OF THE INTERIOR
GEOLOGICAL SURVEY

APPLICATION FOR PERMIT TO DRILL, DEEPEN, OR PLUG BACK

1a. TYPE OF WORK

DRILL ☒DEEPEN ☐PLUG BACK ☐

b. TYPE OF WELL

OIL
WELL ☒GAS
WELL ☐OTHER ☐SINGLE
ZONE ☒MULTIPLE
ZONE ☐

2. NAME OF OPERATOR

Union Texas Petroleum Corporation

3. ADDRESS OF OPERATOR

P.O. Box 808, Farmington, New Mexico 87401

4. LOCATION OF WELL (Report location clearly and in accordance with any State requirements.)

At surface 1725 ft./South line and 475 ft./East line

At proposed prod. zone Same as above

14. DISTANCE IN MILES AND DIRECTION FROM NEAREST TOWN OR POST OFFICE

7 miles Southeast of Bloomfield, New Mexico

15. DISTANCE FROM PROPOSED*

LOCATION TO NEAREST

475 ft.

PROPERTY OR LEASE LINE, FT.

475 ft.

(Also to nearest drlg. unit line, if any)

18. DISTANCE FROM PROPOSED LOCATION*
TO NEAREST WELL, DRILLING, COMPLETED,
OR APPLIED FOR, ON THIS LEASE, FT.

565 ft.

16. NO. OF ACRES IN LEASE

2,284.30

19. PROPOSED DEPTH

6038 ft.

17. NO. OF ACRES ASSIGNED
TO THIS WELL

Lot 1 25.94

20. ROTARY OR CABLE TOOLS

Rotary

21. ELEVATIONS (Show whether DF, RT, GR, etc.)

5717 Gr.

22. APPROX. DATE WORK WILL START*

October 10, 1982

23.

PROPOSED CASING AND CEMENTING PROGRAM

SIZE OF HOLE	SIZE OF CASING	WEIGHT PER FOOT	SETTING DEPTH	QUANTITY OF CEMENT
13-3/4"	10-3/4" K-55	40.55	300 ft. (+)	240 cu. ft. (Circulated)
9-7/8"	7-5/8" K-55	26.40	5230 ft.	1440 cu. ft. (Cover the Ojo Alamo)
6-3/4"	5-1/2" J-55	15.50	5030 - 6038 ft.	140 cu. ft. (Top of liner)

We desire to drill 13-3/4" surface hole with natural mud to approximately 300 ft. Run new surface pipe as indicated above and cement. W.O.C. Pressure test the surface pipe to 800 PSIG for 10 minutes. Drill out w/9-5/8" bit to approximately 5230 ft. Run new 7-5/8" pipe to T.D. with a D.V. tool at approximately 2000 ft. Stage 1 cement approximately 620 cu. ft. of 65/35/6 followed by approximately 90 cu. ft. of class "B". 2nd stage approximately 640 cu. ft. of 65/35/12 followed by approximately 90 cu. ft. of class "B". W.O.C. Drill out D.V. tool. Pressure test casing to 1500 PSIG for 10 minutes. Drill out with 6-3/4" bit to approximately 6038 ft. using natural gas as the circulating medium. Log the well. Run new 5-1/2" casing to T.D. with liner hanger at approximately 5030 ft. Cement with approximately 142 cu. ft. of 50-50 poz mix. W.O.C. Perforate and fracture the Gallup zone. Clean up the the well. Run new 2-3/8", 4.7#, EVE tubing to the Gallup zone. Nipple down the well head. Run rods and pump. Set pumping unit and tanks. Test well. Connect to a gathering system.

The gas from this well has previously been dedicated to a transporter.

IN ABOVE SPACE DESCRIBE PROPOSED PROGRAM: If proposal is to deepen or plug back, give data on present productive zone and proposed new productive zone. If proposal is to drill or deepen directionally, give pertinent data on subsurface locations and measured and true vertical depths. Give blowout preventer program, if any.

24.

SIGNED

Rudy D. Motto

TITLE Field Operations Manager

DATE September 10, 1982

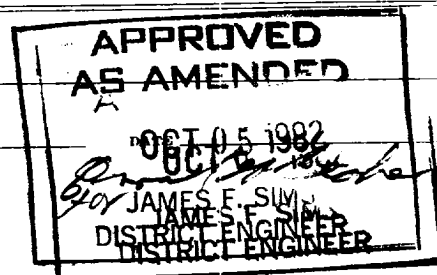
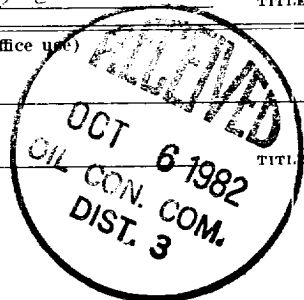
(This space for Federal or State office use)

PERMIT NO.

APPROVAL DATE

APPROVED BY

CONDITIONS OF APPROVAL, IF ANY:



NMOCC

All distances must be from the outer boundaries of the Section

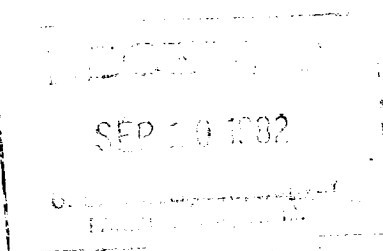
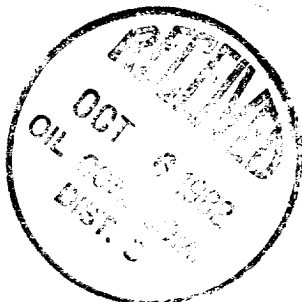
Lessee UNION TEXAS PETROLEUM CORP.			Well No. 37	
Section 11	Township 28 NORTH	Range 10 WEST	County SAN JUAN	
Actual Well Location of Well: 1725 feet from the SOUTH line and 475 feet from the EAST line				
Ground Level Elev. 5717	Producing Formation GALLUP	Pool Armenta Extension	Dedicated Acres: Lot 1 25.94 Acres	

1. Outline the acreage dedicated to the subject well by colored pencil or hatchure marks on the plat below.
2. If more than one lease is dedicated to the well, outline each and identify the ownership thereof (both as to working interest and royalty).
3. If more than one lease of different ownership is dedicated to the well, have the interests of all owners been consolidated by communitization, unitization, force-pooling, etc?

☐ Yes ☒ No If answer is "yes," type of consolidation _____

If answer is "no," list the owners and tract descriptions which have actually been consolidated. (Use reverse side of this form if necessary.) _____

No allowable will be assigned to the well until all interests have been consolidated (by communitization, unitization, forced-pooling, or otherwise) or until a non-standard unit, eliminating such interests, has been approved by the Division.



11

11

© 475

1725'

2779.98'

CERTIFICATION

I hereby certify that the information contained herein is true and complete to the best of my knowledge and belief.

Rudy D. Motto

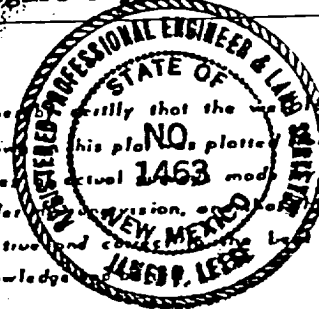
Name
Rudy D. Motto

Position
Field Operations Manager

Company
Union Texas Petroleum

Date
August 10, 1982

I hereby certify that the well location shown on this plat is plotted in the field notes of actual location, and that some or under no objection, and that some is true and correct to the best of my knowledge.



Date Surveyed
July 28, 1982

Registered Professional Engineer and/or Land Surveyor
James P. Lease
James P. Lease

Certificate No.
1463

UNION TEXAS PETROLEUM CORP
Zachry #37
NE $\frac{1}{4}$ SE $\frac{1}{4}$, Sec. 11, T29N, R10W, NMPM
San Juan County, New Mexico

