

UNITED STATES
DEPARTMENT OF THE INTERIOR
GEOLOGICAL SURVEY

APPLICATION FOR PERMIT TO DRILL, DEEPEN, OR PLUG BACK

1a. TYPE OF WORK

DRILL ☒DEEPEN ☐PLUG BACK ☐

b. TYPE OF WELL

OIL
WELL ☒GAS
WELL ☐OTHER ☐SINGLE
ZONE ☒MULTIPLE
ZONE ☐

2. NAME OF OPERATOR

Union Texas Petroleum Corporation

3. ADDRESS OF OPERATOR

P.O. Box 808, Farmington, New Mexico 87401

4. LOCATION OF WELL (Report location clearly and in accordance with any State requirements.)*

At surface

1725 ft./South line and 1745 ft./West line

At proposed prod. zone

Same as above

14. DISTANCE IN MILES AND DIRECTION FROM NEAREST TOWN OR POST OFFICE*

Six miles Southeast of Bloomfield, New Mexico

15. DISTANCE FROM PROPOSED*

LOCATION TO NEAREST

PROPERTY OR LEASE LINE, FT.

(Also to nearest drlg. unit line, if any)

895 ft.

895 ft.

18. DISTANCE FROM PROPOSED LOCATION*

TO NEAREST WELL, DRILLING, COMPLETED,

OR APPLIED FOR, ON THIS LEASE, FT.

600 ft.

600 ft.

21. ELEVATIONS (Show whether DF, RT, GR, etc.)

5,805 Gr.

23.

PROPOSED CASING AND CEMENTING PROGRAM

SIZE OF HOLE	SIZE OF CASING	WEIGHT PER FOOT	SETTING DEPTH	QUANTITY OF CEMENT
13-3/4"	New 10-3/4"	40.55 K55	300 ft.	240 cu. ft. (circulated)
9-7/8"	New 7-5/8"	26.40 K55	4825 ft.	1440 cu. ft. (Cover Ojo Alamo)
6-3/4"	New 5-1/2"	15.50 J55	4625' to 6097'	142 cu. ft. (Top of liner)

We desire to drill surface hole to approx. 300 ft. using natural mud as the circulating medium. Run new 10-3/4" pipe to T.D. Cement w/approx. 240 cu. ft. of Class "B" cement. W.O.C. Pressure test to 800 PSIG for 10 minutes. Drill 9-7/8" hole to approx. 4825 ft. and log the well in a starch base, permaloid, non-dispersed mud. Run new 7-5/8" csg. to T.D. with a D.V. tool at approx. 2000 ft. Cement 1st stage w/approx. 620 cu. ft. of 65/35/6 cement followed by approx. 90 cu. ft. of Class "B" cement. 2nd stage 640 cu. ft. of 65/35/12 cement followed by approx. 90 cu. ft. of Class "B" cement. W.O.C. Drill out D.V. tool. Test the csg. to 1500 PSIG for 10 minutes. Drill 6-3/4" hole to 6097 ft. using natural gas as the circulating medium. Log the well. Run new 5-1/2" csg. to T.D. with the liner hanger at approx. 4625 ft. Cement w/approx. 142 cu. ft. of 50-50 poz. W.O.C. Test the csg. Perf and frac the Gallup zone. Clean the well up. Run new 2-3/8", 4.7# J55 E.U.E. tbg. to the Gallup zone. Run a pump and rods. Nipple down the well head. Set pumping unit. Set tanks and connect to a gathering system. Test Well.

The gas from this well has previously been dedicated to a transporter.

IN ABOVE SPACE DESCRIBE PROPOSED PROGRAM: If proposal is to deepen or plug back, give data on present productive zone and proposed new productive zone. If proposal is to drill or deepen directionally, give pertinent data on subsurface locations and measured and true vertical depths. Give blowout preventer program, if any.

24.

SIGNED

RUDY D. MOTTO

Field Operations Manager

DATE 9-28-82

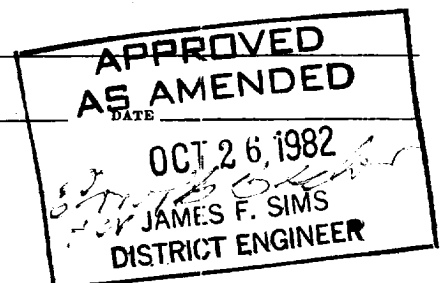
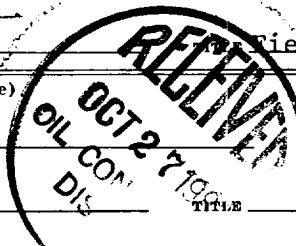
(This space for Federal or State office use)

PERMIT NO.

APPROVAL DATE

APPROVED BY

CONDITIONS OF APPROVAL, IF ANY:



All distances must be from the outer boundaries of the Section.

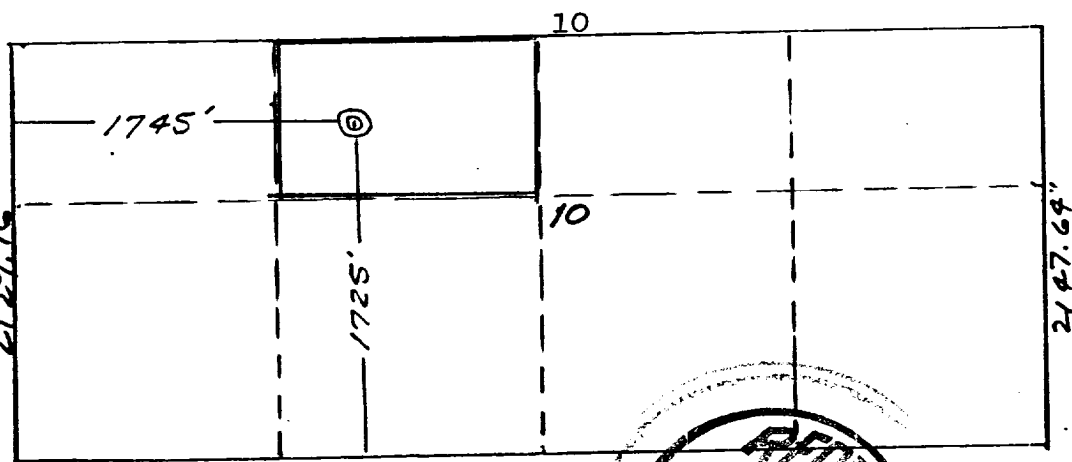
Lease UNION TEXAS PETROLEUM CORP.			Well No. 42	
Unit Letter K	Section 10	Township 28 NORTH	Range 10 WEST	County SAN JUAN
Actual Well Location of Well:				
1725 feet from the SOUTH line and		1745 feet from the WEST line		
Ground Level Elev. 5805	Producing Formation GALLUP	Pool WILDCAT Armenta Ext.	Dedicated Acreage LOT 3 24.73 Acres	

1. Outline the acreage dedicated to the subject well by colored pencil or hatch marks on the plat below.
2. If more than one lease is dedicated to the well, outline each and identify the ownership thereof (both as to working interest and royalty).
3. If more than one lease of different ownership is dedicated to the well, have the interests of all owners been consolidated by communitization, unitization, force-pooling, etc?

☐ Yes ☒ No If answer is "yes," type of consolidation _____

If answer is "no," list the owners and tract descriptions which have actually been consolidated. (Use reverse side of this form if necessary.) _____

No allowable will be assigned to the well until all interests have been consolidated (by communitization, unitization, forced-pooling, or otherwise) or until a non-standard unit, eliminating such interests, has been approved by the Division.



CERTIFICATION

I hereby certify that the information contained herein is true and complete to the best of my knowledge and belief.

Rudy D. Motto

Name

Rudy D. Motto

Position

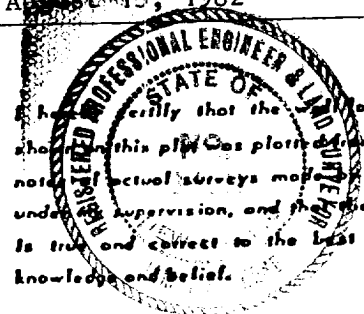
Field Operations Manager

Company

Union Texas Petroleum

Date

August 13, 1982



Date Surveyed

July 30, 1982

Registered Professional Engineer and/or Land Surveyor

James P. Lease

Certificate No.

1463

UNION TEXAS PETROLEUM CORP.
Zachry #42
NE $\frac{1}{4}$ SW $\frac{1}{4}$, Sec. 10, T28N, R10W, NMPM
San Juan County, New Mexico

