

UNITED STATES  
DEPARTMENT OF THE INTERIOR  
GEOLOGICAL SURVEY

APPLICATION FOR PERMIT TO DRILL, DEEPEN, OR PLUG BACK

1a. TYPE OF WORK  
DRILL ☒ DEEPEN ☐ PLUG BACK ☐

b. TYPE OF WELL  
OIL WELL ☒ GAS WELL ☐ OTHER ☐ SINGLE ZONE ☒ MULTIPLE ZONE ☐

2. NAME OF OPERATOR

Union Texas Petroleum Corporation

3. ADDRESS OF OPERATOR

P.O. Box 808, Farmington, New Mexico 87401  
4. LOCATION OF WELL (Report location clearly and in accordance with any State requirements.)  
At surface

990 ft./South line and 1845 ft./East line

At proposed prod. zone

Same as above

14. DISTANCE IN MILES AND DIRECTION FROM NEAREST TOWN OR POST OFFICE\*

Five miles Southeast of Bloomfield, New Mexico 87413

15. DISTANCE FROM PROPOSED\*  
LOCATION TO NEAREST  
PROPERTY OR LEASE LINE, FT.  
(Also to nearest drlg. unit line, if any) 990 ft.  
990 ft.

18. DISTANCE FROM PROPOSED LOCATION\*  
TO NEAREST WELL, DRILLING, COMPLETED,  
OR APPLIED FOR, ON THIS LEASE, FT. 990 ft.  
990 ft.

21. ELEVATIONS (Show whether DF, RT, GR, etc.)

5,742 Gr.

23. PROPOSED CASING AND CEMENTING PROGRAM

SIZE OF HOLE	SIZE OF CASING	WEIGHT PER FOOT	SETTING DEPTH	QUANTITY OF CEMENT
13-3/4"	10-3/4" K55	40.50#	300 ft.	295 cu. ft. (Circulated)
9-7/8"	7-5/8" K55	26.40#	5132 ft.	1440 cu. ft. (Cover the Ojo Alamo)
6-3/4"	5-1/2" J55	15.50#	4932' to 5932'	142 cu. ft. (Top of the liner)

We desire to drill 13-3/4" surface hole to approx. 300 ft. using natural mud as the circulating medium. Run new 10-3/4" pipe to T.D. Cement w/approx. 295 cu. ft. of Class "B" cement circulated to the surface. Pressure test the casing to 800 PSIG for 10 minutes. Drill 9-7/8" hole to approx. 5132 ft. using a permaloid, non-dispersed, starch base mud as the circulating medium. Log the well. Run new 7-5/8" casing with a D.V. tool at approx. 2000 ft. Cement first stage w/approx. 620 cu. ft. of 65/35/6 followed by approx. 90 cu. ft. of Class "B" cement. 2nd stage w/approx. 640 cu. ft. of 65/35/12 followed by approx. 90 cu. ft. of Class "B" cement. W.O.C. Drill out D.V. tool. Pressure test the casing to 1500 PSIG for 10 minutes. Drill out with natural gas to approx. 5932 ft. Log the well. Run new 5-1/2" casing to T.D. with the liner top at approx. 4932 ft. Cement with approx. 142 cu. ft. of 50-50 poz mix to cover the liner hanger. W.O.C. Perf and frac the Gallup zone. Clean the well up. Run new 2-3/8", 4.7#, E.U.E., J55 tbgs. to the Gallup zone. Run pump and rods. Set pumping unit and tanks. Test the well after connecting to a gathering system.  
The gas from this well has previously been dedicated to a transporter.

IN ABOVE SPACE DESCRIBE PROPOSED PROGRAM: If proposal is to deepen or plug back, give data on present productive zone and proposed new productive zone. If proposal is to drill or deepen directionally, give pertinent data on subsurface locations and measured and true vertical depths. Give blowout preventer program, if any.

24.

SIGNED

RUDY D. MOTTO

TITLE Field Operations Manager

DATE 9-28-82

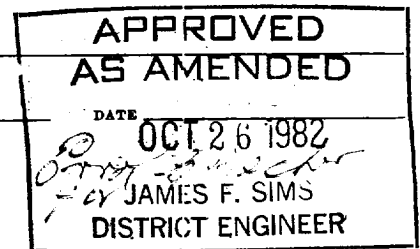
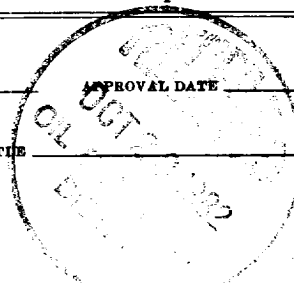
(This space for Federal or State office use)

PERMIT NO.

APPROVED BY

CONDITIONS OF APPROVAL, IF ANY:

TITLE



11/10/82

All distances must be from the outer boundaries of the Section.

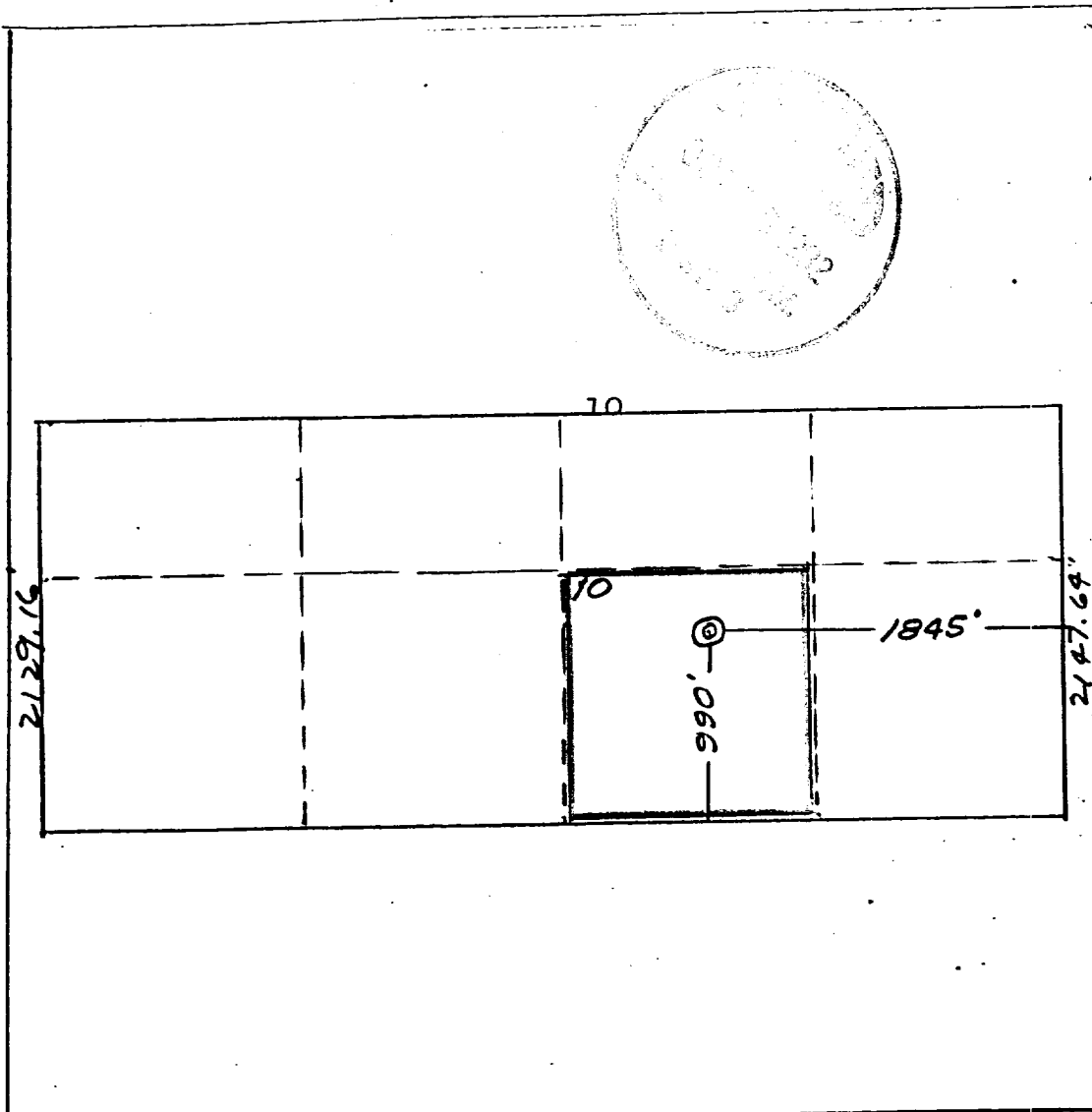
Operator <b>UNION TEXAS PETROLEUM CORP.</b>			Lease <b>ZACHRY</b>		Well No. <b>35</b>
Unit Letter <b>0</b>	Section <b>10</b>	Township <b>28 NORTH</b>	Range <b>10 WEST</b>	County <b>SAN JUAN</b>	
Actual Wellbore Location of Well:					
990 feet from the <b>SOUTH</b> line and		1845 feet from the <b>EAST</b> line			
Ground Level Elev. <b>5742</b>	Producing Formation <b>GALLUP</b>	Pool <b>Armenta Ext. WILDCAT</b>		Dedicated Acreage <b>SW/SE 40.00 Acres</b>	

1. Outline the acreage dedicated to the subject well by colored pencil or hatchure marks on the plat below.
2. If more than one lease is dedicated to the well, outline each and identify the ownership thereof (both as to working interest and royalty).
3. If more than one lease of different ownership is dedicated to the well, have the interests of all owners been consolidated by communitization, unitization, force-pooling, etc?

☐ Yes ☒ No If answer is "yes," type of consolidation \_\_\_\_\_

If answer is "no," list the owners and tract descriptions which have actually been consolidated. (Use reverse side of this form if necessary.) \_\_\_\_\_

No allowable will be assigned to the well until all interests have been consolidated (by communitization, unitization, forced-pooling, or otherwise) or until a non-standard unit, eliminating such interests, has been approved by the Division.



CERTIFICATION

I hereby certify that the information contained herein is true and complete to the best of my knowledge and belief.

*Rudy D. Motto*

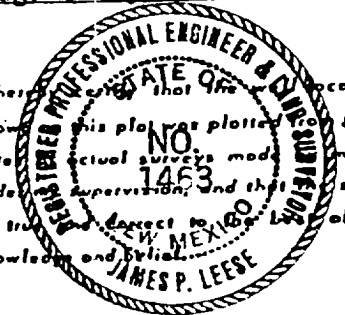
Name  
Rudy D. Motto

Position  
Field Operations Manager

Company  
Union Texas Petroleum

Date  
August 11, 1982

I hereby certify that the information shown on this plat was plotted from field notes and actual surveys made under my supervision, and that the same is true and correct to the best of my knowledge and belief.



Date Surveyed

July 29, 1982

Registered Professional Engineer and Land Surveyor

*James P. Leese*  
James P. Leese

Certificate No.

1463

UNION TEXAS PETROLEUM CORP.  
Zachry #35  
SW $\frac{1}{4}$ SE $\frac{1}{4}$ , Sec. 10, T28N, R10W, NMPM  
San Juan County, New Mexico

