

UNITED STATES
DEPARTMENT OF THE INTERIOR
GEOLOGICAL SURVEY

APPLICATION FOR PERMIT TO DRILL, DEEPEN, OR PLUG BACK

1a. TYPE OF WORK

DRILL ☒DEEPEN ☐PLUG BACK ☐

b. TYPE OF WELL

OIL
WELL ☒GAS
WELL ☐OTHER ☐

2. NAME OF OPERATOR

Union Texas Petroleum Corporation

3. ADDRESS OF OPERATOR

P. O. Box 808, Farmington, New Mexico

4. LOCATION OF WELL (Report location clearly and in accordance with any State requirements.)

At surface

1750 ft. from South line and 1980 ft. from West line

At proposed prod. zone

Same as above

14. DISTANCE IN MILES AND DIRECTION FROM NEAREST TOWN OR POST OFFICE*

1-3/4 Miles South of Bloomfield, New Mexico 87413

15. DISTANCE FROM PROPOSED*

LOCATION TO NEAREST

PROPERTY OR LEASE LINE, FT.

(Also to nearest drlg. unit line, if any)

360 ft.

18. DISTANCE FROM PROPOSED LOCATION*

TO NEAREST WELL, DRILLING, COMPLETED,

OR APPLIED FOR, ON THIS LEASE, FT.

1440 ft.

16. NO. OF ACRES IN LEASE

1894.08

19. PROPOSED DEPTH

6409

17. NO. OF ACRES ASSIGNED
TO THIS WELL

Lot 3 27.88

20. ROTARY OR CABLE TOOLS

Rotary

21. ELEVATIONS (Show whether DF, RT, GR, etc.)

GR. 5735

22. APPROX. DATE WORK WILL START*

November 10, 1982

23.

PROPOSED CASING AND CEMENTING PROGRAM

SIZE OF HOLE	SIZE OF CASING	WEIGHT PER FOOT	SETTING DEPTH	QUANTITY OF CEMENT
13-1/2"	New 10-3/4"	40.5# H40	300 ft.	218 cu. ft. (Circulated)
9-7/8"	New 7-5/8"	26.4# K55	4775 ft.	1438 cu. ft. (Cover the Ojo Alamo)
6-3/4"	New 5-1/2"	15.5# J55	4625' to 6409'	220 cu. ft. (Top of liner)

We desire to drill the surface hole to approx. 300 ft. using natural mud as a circulating medium. Run pipe and cement with Class "B" cement. W.O.C. Pressure test the surface pipe to 800 PSIG for 10 minutes. Drill out with 9-7/8" bit to approx. 4775 ft. using a starch base, permaloid non-dispersed mud as a circulating medium. Log the well. Run pipe with a D.V. tool at approx. 1950 ft. Cement 1st stage with approx. 950 sx. of 50-50 poz w/2% Gel. Cement 2nd stage with approx. 410 cu. ft. of 65/35/2 with 12.5# Gilsonite/sack tailed in with approx. 118 cu. ft. of Class "B" cement w/2% CaCl₂. W.O.C. Drill D.V. tool. Pressure test the casing to 1500 PSIG for 10 minutes. Drill out with 6-3/4" bit to T.D. using natural gas as the circulating medium. Log the well. Run liner to T.D. with a hanger at approx. 4625 ft. Cement with approx. 220 cu. ft. of 50-50 poz mix w/2% Gel and 6# Gilsonite/sack. Pressure test the casing. Perforate and frac the Gallup zone. Clean the well up. Run 2-3/8", 4.7#, E.U.E. J55 tbg. to the Gallup zone. Nipple down the well head. Run pump and rods. Set pumping unit, separator and tanks. Test the well. Connect to a gathering system. The gas from this well has previously been dedicated to a transporter.

IN ABOVE SPACE DESCRIBE PROPOSED PROGRAM: If proposal is to deepen or plug back, give data on present productive zone and proposed new productive zone. If proposal is to drill or deepen directionally, give pertinent data on subsurface locations and measured and true vertical depths. Give blowout preventer program, if any.

24.

SIGNED

RUDY D. MOTTO

TITLE Field Operations Manager

DATE October 25, 1982

(This space for Federal or State office use)

PERMIT NO.

APPROVAL DATE

APPROVED BY

CONDITIONS OF APPROVAL, IF ANY:

NOV 30 1982
OIL CON. COM.
DIST. 3APPROVED
AS AMENDEDNOV 29 1982
JAMES F. SIMS
DISTRICT ENGINEER

All distances must be from the outer boundaries of the Section

Operator UNION TEXAS PETROLEUM CORP.			Lease ANGEL PEAK		Well No. 24
Unit Letter K	Section 12	Township 28 NORTH	Range 11 WEST	County SAN JUAN	
Actual Footage Location of Well:					
1750 feet from the SOUTH line and 1980 feet from the WEST					
Ground Level Elev. 5735	Producing Formation GALLUP	Pool Wildcat Undes		Dedicated Acreage 1.0730 Acres	

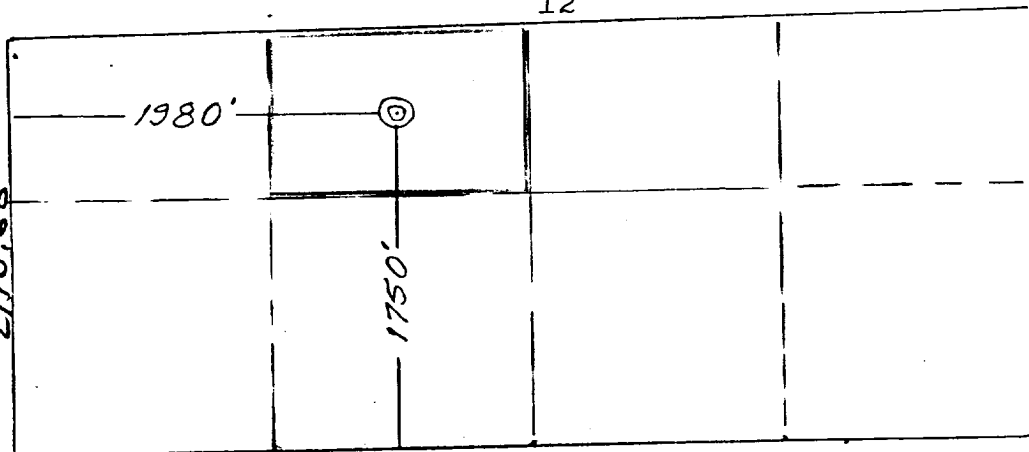
1. Outline the acreage dedicated to the subject well by colored pencil or hatchure marks on the plat below.
2. If more than one lease is dedicated to the well, outline each and identify the ownership thereof (both as to working interest and royalty).
3. If more than one lease of different ownership is dedicated to the well, have the interests of all owners been consolidated by communitization, unitization, force-pooling, etc?

☐ Yes ☒ No If answer is "yes," type of consolidation _____

If answer is "no," list the owners and tract descriptions which have actually been consolidated. (Use reverse side of this form if necessary.) _____

No allowable will be assigned to the well until all interests have been consolidated (by communitization, unitization, forced-pooling, or otherwise) or until a non-standard unit, eliminating such interests, has been approved by the Division.

12



CERTIFICATION

I hereby certify that the information contained herein is true and complete to the best of my knowledge and belief.

Name

Rudy D. Motto

Position

Field Operations Manager

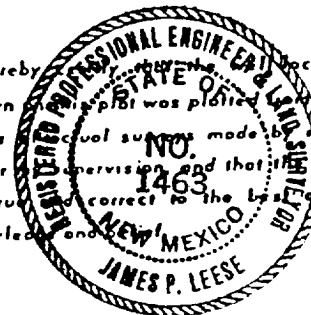
Company

Union Texas Petroleum Corp.

Date

October 7, 1982

I hereby certify that the location shown on this plat was plotted in the field notes of actual surveys made by me or under my supervision and that the same is true and correct to the best of my knowledge and belief.



Date Surveyed

August 30, 1982

Registered Professional Engineer
and of Land Surveyor

James P. Leese

Certificate No.

1463

3531 56
100000
100000

UNITED STATES GEOLOGICAL SURVEY
DEPARTMENT OF THE INTERIOR
GEOLOGICAL SURVEY
Angel Peak # 21
SW 1/4, Sec. 12, T28N, R11W, N.M.P.M.
San Juan County, New Mexico

