

UNITED STATES  
DEPARTMENT OF THE INTERIOR  
GEOLOGICAL SURVEY

MAY 11 1983

APPLICATION FOR PERMIT TO DRILL, DEEPEN, OR PLUG BACK **CON. DIV.**

1a. TYPE OF WORK  
DRILL ☒ DEEPEN ☐ PLUG BACK ☐

b. TYPE OF WELL  
OIL WELL ☒ GAS WELL ☐ OTHER ☐ SINGLE ZONE ☒ MULTIPLE ZONE ☐

2. NAME OF OPERATOR  
Union Texas Petroleum Corporation

3. ADDRESS OF OPERATOR  
P. O. Box 808, Farmington, New Mexico 87499

4. LOCATION OF WELL (Report location clearly and in accordance with any State requirements.)  
At surface: 334 ft./South line and 334 ft./West line  
At proposed prod. zone: Same as above

5. LEASE DESIGNATION AND SERIAL NO.  
SF 047039-C

6. INDIVIDUAL LOTTEE OR TRIBE NAME

7. AGREEMENT NAME

8. FARM OR LEASE NAME  
Congress Lachman

9. WELL NO.  
8

10. FIELD AND POOL, OR WILDCAT  
Undesignated Gallup

11. SEC. T., R., M., OR BLK. AND SURVEY OR AREA  
Sec. 7, T-28N, R-10W, N.M.P.M.

12. COUNTY OR PARISH  
San Juan

13. STATE  
New Mexico

14. DISTANCE IN MILES AND DIRECTION FROM NEAREST TOWN OR POST OFFICE  
3 miles Southeast of Bloomfield, New Mexico

15. DISTANCE FROM PROPOSED LOCATION TO NEAREST PROPERTY OR LEASE LINE, FT. (Also to nearest drlg. unit line, if any)  
334 ft. 334 ft.

16. NO. OF ACRES IN LEASE  
497.86

17. NO. OF ACRES ASSIGNED TO THIS WELL  
41.94

18. DISTANCE FROM PROPOSED LOCATION TO NEAREST WELL, DRILLING, COMPLETED, OR APPLIED FOR, ON THIS LEASE, FT.  
1023 ft.

19. PROPOSED DEPTH  
6097'

20. ROTARY OR CABLE TOOLS  
Rotary

21. ELEVATIONS (Show whether DF, RT, GR, etc.)  
5787' GR

22. APPROX. DATE WORK WILL START  
May 15, 1983

23. **GENERAL REQUIREMENTS**  
CEMENTING PROGRAM  
This action is subject to administrative appeal pursuant to 30 CFR 290.

SIZE OF HOLE	SIZE OF CASING	WEIGHT PER FOOT	SETTING DEPTH	QUANTITY OF CEMENT
13-3/4"	9-5/8"	36.0# K-55	300'	250 cu. ft. (circulated)
8-3/4"	7"	26.0# K-55	5400'	1400 cu. ft. (circulated)
6-1/4"	4-1/2"	11.6# K-55	5200' - 6097'	150 cu. ft. (top of liner)

We desire to drill 13-3/4" surface hole to approx. 300 ft. using natural mud as a circulating medium. Run new 9-5/8" casing to TD. Cement with approx. 250 cu ft of Class "B" cement circulated to the surface. Pressure test the casing to approx. 800 PSIG for 10 minutes. Drill 8-3/4" hole to approx. 5400 ft. using a starch base, permaloid, nondispersed mud as the circulating medium. Log the well. Run new 7" casing to TD with a DV tool at approx. 2000 ft. Cement 1st stage with approx. 750 cu ft of 65/35/6 followed by approx. 100 cu ft of Class "B" cement. Cement the second stage with approx. 450 cu ft of 65/35/12 followed by approx. 100 cu ft of Class "B". Circulate cement to surface. Drill out the DV tool. Pressure test the pipe to 1500 PSIG for 10 minutes. Drill out with 6-1/4" bit to approx. 6097 ft. using natural gas as the circulating medium. Log the well. Run new 4-1/2" casing to TD and cement with approx. 150 cu ft of 50/50 Poz mix. WOC. Perforate and fracture the Gallup zone. Clean the well up. Run new 2-3/8" EUE, 4.7#, J-55 tubing to the Gallup zone. Run rod pump and rods. Set a pumping unit and tanks. Install a pipeline from the wellhead to the existing Rudy Gathering System and test the well. The gas from this well has previously been dedicated to a transporter. NOTE: Actual cement volumes will be calculated from caliper log.

IN ABOVE SPACE DESCRIBE PROPOSED PROGRAM: If proposal is to deepen or plug back, give data on present productive zone and proposed new productive zone. If proposal is to drill or deepen directionally, give pertinent data on subsurface locations and measured and true vertical depths. Give blowout preventer program, if any.

24. SIGNED W. K. Cooper TITLE Field Operations Manager DATE April 11, 1983

(This space for Federal or State office use)

PERMIT NO. \_\_\_\_\_ APPROVAL DATE \_\_\_\_\_

APPROVED BY \_\_\_\_\_ TITLE \_\_\_\_\_

CONDITIONS OF APPROVAL, IF ANY:

APPROVED

AS AMENDED

MAY 11 1983

JAMES F. SIMS  
DISTRICT ENGINEER

All distances must be from the outer boundaries of the Section.

Operator <b>UNION TEXAS PETROLEUM CORPORATION</b>		Lease <b>CONGRESS LACHMAN</b>		Well No. <b>8</b>
Unit Letter <b>M</b>	Section <b>7</b>	Township <b>28 NORTH</b>	Range <b>10 WEST</b>	County <b>SAN JUAN</b>
Actual Footage Location of Well: <b>334</b> feet from the <b>SOUTH</b> line and <b>334</b> feet from the <b>WEST</b> line				
Ground Level Elev. <b>5787</b>	Producing Formation <b>GALLUP</b>	Pool <b>UNDESIGNATED</b>	Dedicated Acreage <b>SW SW 41.94</b> Acres	

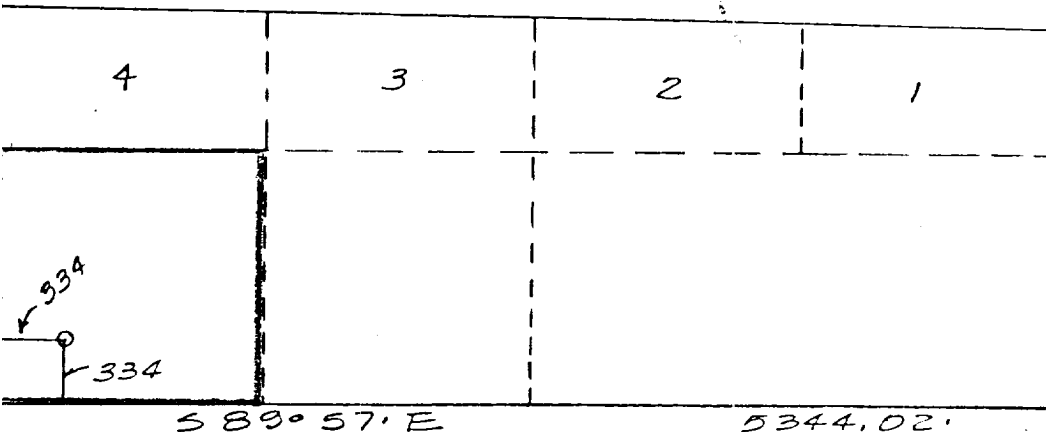
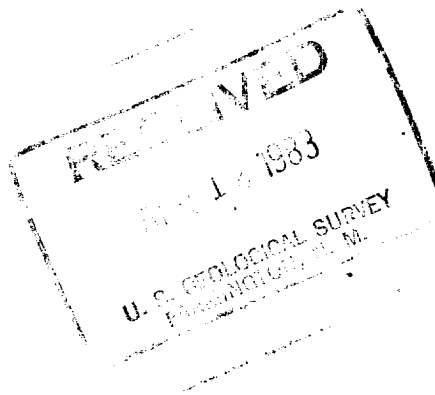
1. Outline the acreage dedicated to the subject well by colored pencil or hatchure marks on the plat below.
2. If more than one lease is dedicated to the well, outline each and identify the ownership thereof (both as to working interest and royalty).
3. If more than one lease of different ownership is dedicated to the well, have the interests of all owners been consolidated by communization, unitization, force-pooling, etc?

☐ Yes ☒ No If answer is "yes," type of consolidation \_\_\_\_\_

If answer is "no," list the owners and tract descriptions which have actually been consolidated. (Use reverse side of this form if necessary.) \_\_\_\_\_

No allowable will be assigned to the well until all interests have been consolidated (by communization, unitization, forced-pooling, or otherwise) or until a non-standard unit, eliminating such interests, has been approved by the Division

RECEIVED  
MAY 11 1983  
OIL CON. DIV.  
DIST. 3



NORTH 1980.66'

CERTIFICATION

I hereby certify that the information contained herein is true and complete to the best of my knowledge and belief.

Name  
Rudy D. Motto  
Position  
Area Operations Manager  
Company  
Union Texas Petroleum Corp.  
Date  
March 17, 1983

I hereby certify that the well location shown on this plat was plotted from field notes of accurate surveys made by me or under my supervision, and that the same is true and correct to the best of my knowledge and belief.

Date Surveyed  
March 2, 1983  
Registered Professional Engineer and/or Land Surveyor  
Michael Daly  
Certificate No.  
5992

UNION TEXAS PETROLEUM CORPORATION

Congress Lachman No. 8

1. The geologic name of the surface formation is "Wasatch".

2. The estimated tops of important geologic markers are:

A. Top of the Ojo Alamo	692	ft.
B. Kirtland	892	ft.
C. Fruitland	1702	ft.
D. Pictured Cliffs	1902	ft.
E. Chacra	2887	ft.
F. Cliff House	3527	ft.
G. Point Lookout	4242	ft.
H. Gallup	5447	ft.

3. The estimated depths at which anticipated water, oil or other mineral bearing formations are expected to be encountered are:

A. Top of the Ojo Alamo	692	ft.	Water
B. Kirtland	892	ft.	Water
C. Fruitland	1702	ft.	Water
D. Pictured Cliffs	1902	ft.	Gas
E. Chacra	2887	ft.	Gas
F. Cliff House	3527	ft.	Water
G. Point Lookout	4242	ft.	Gas
H. Gallup	5447	ft.	Oil & Gas

4. The casing program is shown on form 9-331C and all casing is new.

5. The lessee's pressure control equipment schematics are attached, along with minimum specifications, testing procedures, and frequencies.

6. The type, estimated volumes, and characteristics of the circulating medium are as follows:

A. 0 - 300 ±	ft.	Natural Mud
B. 300 ± - 5400 ±	ft.	Permaloid non-dispersed mud containing approx. 150 sx. gel, 60 sx. of permaloid and 15 sx. of CMC.
C. 5400 ± - 6097 ±	ft.	Natural Gas

7. The auxiliary equipment to be used will be floats at the bit and a sub on the floor with a full opening valve to be stabbed into the drill pipe when the kelly is not in the string.

8. The well is in an area which is partially developed; therefore, we will not have a testing and coring program. The logging program is as follows:

- A. G.R. - DIFL
- B. GR - CAL
- C. F.D.C.- C.N.L.

9. We do not expect to find any abnormal pressures, temperatures or hydrogen sulfide problems in this partially developed area.

10. The anticipated starting date for this well is: May 15, 1983

UNION TEXAS PETROLEUM CORPORATION  
Congress Lachman #8  
SW $\frac{1}{4}$ SW $\frac{1}{4}$ , Sec. 7, T28N, R10W, N.M.P.M.,  
San Juan County, New Mexico