

District I  
P O Box 1980, Hobbs, NM

District II  
P O Drawer DD, Artesia, NM 88221

District III  
1000 Rio Brazos Rd. Aztec, NM 87410

State of New Mexico  
Energy, Minerals and Natural Resources Department

SUBMIT 1 COPY TO  
APPROPRIATE  
DISTRICT OFFICE  
AND 1 COPY TO  
SANTA FE OFFICE

MAR 28 1997

OIL CONSERVATION DIVISION

2040 South Pacheco Street  
Santa Fe, New Mexico 87505

PIT REMEDIATION AND CLOSURE REPORT

Operator: PNM Gas Services ( Amoco ) Telephone: 324-3764

Address: 603 W. Elm Street Farmington, NM 87401

Facility or Well Name: Day Gas Com #1E

Location: Unit: M Sec. 7 T. 28 N R. 10 W County San Juan

Pit Type: Separator ☒ Dehydrator ☐ Other ☐

Land Type: BLM ☒ State ☐ Fee ☐ Other ☐

Pit Location: Pit dimensions: length 20 width 20 depth 3

(Attach diagram) Reference: wellhead ☒ other ☐

Footage from reference: 100'

Direction from reference: 80 Degrees ☒ East ☐ North ☐  
of ☐ West ☒ South

Depth to Ground Water: Less than 50 feet (20 points)  
50 feet to 99 feet (10 points)  
Greater than 100 feet ( 0 points) 0

(Vertical distance from contaminants to  
seasonal high water elevation of ground  
water)

Wellhead Protection Area:

(Less than 200 feet from a private  
domestic water source, or, less than 1,000  
feet from all other water sources)

Yes (20 points)  
No ( 0 points) 0

Distance to Surface Water:

(Horizontal distance to perennial lakes,  
ponds, rivers, streams, creeks, irrigation  
canals and ditches)

Less than 200 feet (20 points)  
200 feet to 1,000 feet (10 points)  
Greater than 1,000 feet ( 0 points) 0

RANKING SCORE (TOTAL POINTS): 0

RECEIVED  
JAN 24 1997  
OIL CON. DIV  
DIST. 3

**Date Remediation Started:** 9/23/96 **Date Completed:** 9/23/96

**Remediation Method:** Excavation X Approx. Cubic Yard 180

(Check all appropriate sections)

Landfarmed X Amount Landfarmed (cubic yds) 180

Other \_\_\_\_\_

**Remediation Location:** Onsite X Offsite \_\_\_\_\_

(i.e., landfarmed onsite, name and location of offsite facility)

**Backfill Material Location:** \_\_\_\_\_

**General Description of Remedial Action:**

Excavated contaminated soil to pit size of 15'x18'x18' and landfarmed soil onsite within a bermed area at a depth of 6" to 12". Soil was aerated by plowing/disking until soil met regulatory levels.

**Ground Water Encountered:** No ☒ Yes ☐ Depth \_\_\_\_\_

**Final Pit Closure Sampling:**

Sample Location 5 pt composite-4 side walls and center of pit bottom

(if multiple samples, attach sample result and diagram of sample locations and depths.)

Sample depth 18'

Sample date 9/23/96 Sample time 3:00:00 PM

**Sample Results**

Benzene (ppm) < 0.0002

Total BTEX (ppm) 0.3041

Field headspace (ppm) \_\_\_\_\_

TPH < 5.0 Method 8015A

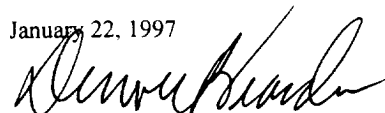
Vertical Extent (ft) \_\_\_\_\_ Risk Assessment form attached Yes ☐ No ☒

**Ground Water Sample:** Yes ☐ No ☒ (If yes, attach sample results)

I HEREBY CERTIFY THAT THE INFORMATION ABOVE IS TRUE AND COMPLETE TO THE BEST OF MY KNOWLEDGE AND MY BELIEF

DATE January 22, 1997

SIGNATURE



PRINTED NAME  
AND TITLE

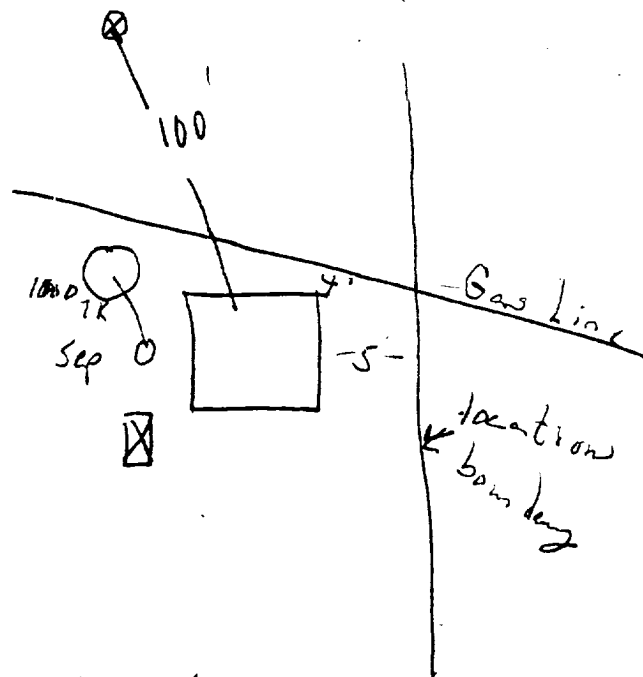
Denver Bearden  
Administrator III

Day Gas Com # 1-E

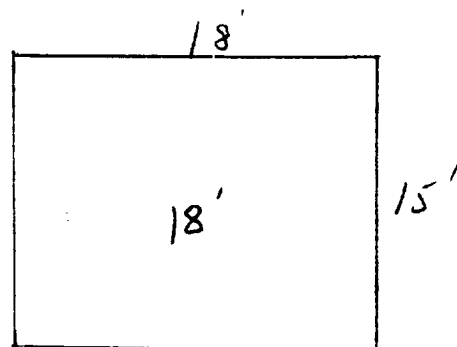
80° E of S

Amoco

Sec 7, 28N, 10W, m



Excavated Pit: 15' x 18' x 18'



OFF: (505) 325-5667



LAB: (505) 325-1556

**Diesel Range Organics**

Attn: *Denver Bearden*  
 Company: *PNM Gas Services*  
 Address: *603 W. Elm*  
 City, State: *Farmington, NM 87401*

Date: *26-Sep-96*  
 COC No.: *5056*  
 Sample No. *12268*  
 Job No. *2-1000*

Project Name: *PNM Gas Services - Day Gas Com #1-E*  
 Project Location: *9609231500; 5pt. Composite, 4 Walls @14' and Bottom @ 18'*  
 Sampled by: *GC* Date: *23-Sep-96* Time: *15:00*  
 Analyzed by: *DC/HR* Date: *25-Sep-96*  
 Sample Matrix: *Soil*

**Laboratory Analysis**

Parameter	Result	Unit of Measure	Detection Limit	Unit of Measure
Diesel Range Organics (C10 - C28)	<5.0	mg/kg	5.0	mg/kg

**Quality Assurance Report**DRO QC No.: *0489-QC***Calibration Check**

Parameter	Method Blank	Unit of Measure	True Value	Analyzed Value	% Diff	Limit
Diesel Range (C10 - C28)	<5.0	ppm	100	95	4.5	15%

**Matrix Spike**

Parameter	1- Percent Recovered	2 - Percent Recovered	Limit	%RSD	Limit
Diesel Range (C10-C28)	111	95	(70-130)	11	20%

**Method** - SW-846 EPA Method 8015A mod. - Nonhalogenated Volatile Hydrocarbons by Gas Chromatography

Approved by: *[Signature]*  
 Date: *9/26/96*

OFF: (505) 325-5667



LAB: (505) 325-1556

**AROMATIC VOLATILE ORGANICS**

Attn: *Denver Bearden*  
Company: *PNM Gas Services*  
Address: *603 W. Elm*  
City, State: *Farmington, NM 87401*

Date: *26-Sep-96*  
COC No.: *5056*  
Sample No.: *12268*  
Job No.: *2-1000*

Project Name: *PNM Gas Services - Day Gas Com #1-E*  
Project Location: *9609231500; 5pt. Composite, 4 Walls @14' and Bottom @ 18'*  
Sampled by: *GC* Date: *23-Sep-96* Time: *15:00*  
Analyzed by: *HR* Date: *25-Sep-96*  
Sample Matrix: *Soil*

**Laboratory Analysis**

<i>Parameter</i>	<i>Result</i>	<i>Unit of Measure</i>	<i>Detection Limit</i>	<i>Unit of Measure</i>
<i>Benzene</i>	<i>&lt;0.2</i>	<i>ug/kg</i>	<i>0.2</i>	<i>ug/kg</i>
<i>Toluene</i>	<i>29.6</i>	<i>ug/kg</i>	<i>0.2</i>	<i>ug/kg</i>
<i>Ethylbenzene</i>	<i>16.4</i>	<i>ug/kg</i>	<i>0.2</i>	<i>ug/kg</i>
<i>m,p-Xylene</i>	<i>229.9</i>	<i>ug/kg</i>	<i>0.2</i>	<i>ug/kg</i>
<i>o-Xylene</i>	<i>28.2</i>	<i>ug/kg</i>	<i>0.2</i>	<i>ug/kg</i>
	<i>TOTAL</i>	<i>304.1</i>		<i>ug/kg</i>

**Method** - SW-846 EPA Method 8020 Aromatic Volatile Organics by Gas Chromatography

Approved by: *[Signature]*  
Date: *9/26/96*

P.O. BOX 2606 • FARMINGTON, NM 87499

- TECHNOLOGY BLENDING INDUSTRY WITH THE ENVIRONMENT -

Day Gas Con # 1E

11-25-96

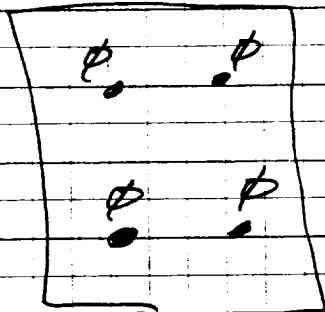
Amoco

Sec. 7-28N-10W

Land Farm: On location

Composite Sample # 9611251130

soil vapor headspace PID reading = 6.1 ppm



2"-12" depth

⊗

OFF: (505) 325-5667



LAB: (505) 325-1556

***Diesel Range Organics***

Attn: *Denver Bearden*  
Company: *PNM Gas Services*  
Address: *603 W. Elm*  
City, State: *Farmington, NM 87401*

Date: *29-Nov-96*  
COC No.: *5113*  
Sample No. *13031*  
Job No. *2-1000*

Project Name: ***PNM Gas Services - Day Gas Com #1E Landfarm***  
Project Location: ***9611251130; 6pt. Composite, 2"-12" depth***  
Sampled by: GC Date: *25-Nov-96* Time: *11:30*  
Analyzed by: DC/HR Date: *26-Nov-96*  
Sample Matrix: *Soil*

***Laboratory Analysis***

<b><i>Parameter</i></b>	<b><i>Result</i></b>	<b><i>Unit of Measure</i></b>	<b><i>Detection Limit</i></b>	<b><i>Unit of Measure</i></b>
<b><i>Diesel Range Organics (C10 - C28)</i></b>	<i>&lt; 5.0</i>	<i>mg/kg</i>	<i>5.0</i>	<i>mg/kg</i>

***Quality Assurance Report***

DRO QC No.: *0512-QC*


***Calibration Check***

<b><i>Parameter</i></b>	<b><i>Method Blank</i></b>	<b><i>Unit of Measure</i></b>	<b><i>True Value</i></b>	<b><i>Analyzed Value</i></b>	<b><i>% Diff</i></b>	<b><i>Limit</i></b>
<b><i>Diesel Range (C10 - C28)</i></b>	<i>&lt; 5.0</i>	<i>ppm</i>	<i>100</i>	<i>103</i>	<i>2.8</i>	<i>15%</i>

***Matrix Spike***

<b><i>Parameter</i></b>	<b><i>1 - Percent Recovered</i></b>	<b><i>2 - Percent Recovered</i></b>	<b><i>Limit</i></b>	<b><i>%RSD</i></b>	<b><i>Limit</i></b>
<b><i>Diesel Range (C10-C28)</i></b>	<i>109</i>	<i>107</i>	<i>(70-130)</i>	<i>1</i>	<i>20%</i>

***Method*** - SW-846 EPA Method 8015A mod. - Nonhalogenated Volatile Hydrocarbons by Gas Chromatography

Approved by:   
Date: *11/29/96*

P.O. BOX 2606 • FARMINGTON, NM 87499

- TECHNOLOGY BLENDING INDUSTRY WITH THE ENVIRONMENT -