

UNITED STATES
DEPARTMENT OF THE INTERIOR
GEOLOGICAL SURVEYRECEIVED
BUREAU OF LAND MANAGEMENT
Other instructions on
reverse side)Form approved.
Budget Bureau No. 42-R1425.

JUN 23 1983

5. LEASE DENUMINATION AND SERIAL NO.

SF 047039-C

6. IF INDIAN, ALLOTTEE OR TRIBE NAME

7. UNIT AGREEMENT NAME

8. FARM OR LEASE NAME

Congress Lachman

9. WELL NO.

7

10. FIELD AND POOL, OR WILDCAT

Undesignated Gallup

11. SEC., T., R., M., OR BLK.
AND SURVEY OR AREASec. 7, T-28N, R-10W,
N.M.P.M.

12. COUNTY OR PARISH

San Juan

13. STATE
New Mexico

1a. TYPE OF WORK

DRILL ☒DEEPEN ☐PLUG BACK ☐

b. TYPE OF WELL

OIL
WELL ☒GAS
WELL ☐

OTHER

SINGLE
ZONE ☒MULTIPLE
ZONE ☐

2. NAME OF OPERATOR

Union Texas Petroleum Corporation

3. ADDRESS OF OPERATOR

P. O. Box 808, Farmington, New Mexico 87499

4. LOCATION OF WELL (Report location clearly and in accordance with any State requirements.)

At surface
1657 ft./South and 1650 ft./West line

At proposed prod. zone

Same as above

14. DISTANCE IN MILES AND DIRECTION FROM NEAREST TOWN OR POST OFFICE*

3 miles Southeast of Bloomfield, New Mexico

15. DISTANCE FROM PROPOSED*
LOCATION TO NEAREST
PROPERTY OR LEASE LINE, FT.

574 ft.

(Also to nearest drig. unit line, if any) 330 ft.

18. DISTANCE FROM PROPOSED LOCATION*
TO NEAREST WELL, DRILLING, COMPLETED,
OR APPLIED FOR, ON THIS LEASE, FT.

860 ft.

16. NO. OF ACRES IN LEASE

497.86

19. PROPOSED DEPTH

6080'

17. NO. OF ACRES ASSIGNED
TO THIS WELL

27.55 23.60

20. ROTARY OR CABLE TOOLS

Rotary

21. ELEVATIONS (Show whether DF, RT, GR, etc.)

5752' GR

DRILLING OPERATIONS AUTHORIZED ARE

SUBJECT TO COMPLIANCE WITH ATTACHED

PROPOSED CASING AND CEMENTING PROGRAM

22. APPROX. DATE WORK WILL START*

June 5, 1983

23.

This action is subject to administrative
appeal pursuant to 30 CFR 290.
QUANTITY OF CEMENT

SIZE OF HOLE	SIZE OF CASING	WEIGHT PER FOOT	SETTING DEPTH	QUANTITY OF CEMENT
13-3/4"	9-5/8"	36.0# K-55	300'	250 cu. ft. (circulated)
8-3/4"	7"	26.0# K-55	5400'	1400 cu. ft. (circulated)
6-1/4"	4-1/2"	11.6# K-55	5200'-6080'	150 cu. ft. (top of liner)

We desire to drill 13-3/4" surface hole to approx. 300 ft. using natural mud as a circulating medium. Run new 9-5/8" casing to TD. Cement with approx. 250 cu. ft. of Class "B" cement circulated to the surface. Pressure test the casing to approx. 800 PSIG for 10 minutes. Drill 8-3/4" hole to approx. 5400 ft. using a starch base, permaloid, nondispersed mud as the circulating medium. Log the well. Run new 7" casing to TD with a DV tool at approx. 2000 ft. Cement first stage with approx. 750 cu. ft. of 65/35/6 followed by approx. 100 cu. ft. of Class "B" cement. Cement the second stage with approx. 450 cu. ft. 65/35/12 followed by approx. 100 cu. ft. of Class "B". Circulate cement to surface. Drill out the DV tool. Pressure test the pipe to 1500 PSIG for 10 minutes. Drill out with 6-1/4" bit to approx. 6080 ft. using natural gas as the circulating medium. Log the well. Run new 4-1/2" casing to TD and cement with approx. 150 cu. ft. of 50/50 Poz mix. WOC. Perforate and fracture the Gallup zone. Clean the well up. Run new 2-3/8" EUE, 4.7#, J-55 tubing to the Gallup zone. Run rod pump and rods. Set a pumping unit and tanks. Install a pipeline from the wellhead to the existing Rudy Gathering System and test the well. The gas from this well has previously been dedicated to a transporter. NOTE: Actual cement volumes to be calculated from caliper log.

IN ABOVE SPACE DESCRIBE PROPOSED PROGRAM: If proposal is to deepen or plug back, give data on present productive zone and proposed new productive zone. If proposal is to drill or deepen directionally, give pertinent data on subsurface locations and measured and true vertical depths. Give blowout preventer program, if any.

24.

SIGNED

W. K. Cooper
W. K. CooperTITLE Field Operations ManagerDATE May 3, 1983

(This space for Federal or State office use)

PERMIT NO.

APPROVAL DATE

APPROVED BY

TITLE

CONDITIONS OF APPROVAL, IF ANY:

APPROVED
AS AMENDED

JUN 22 1983

JAMES F. SIMS
DISTRICT ENGINEER

NMCCO

All distances must be from the outer boundaries of the Section.

Operator UNION TEXAS PETROLEUM CORPORATION			Lease CONGRESS LACHMAN		Well No. 7
Unit Letter K	Section 7	Township 28 NORTH	Range 10 WEST	County SAN JUAN	
Actual Footage Location of Well: 1657 feet from the SOUTH line and 1650 feet from the WEST line					
Ground Level Elev. 5752	Producing Formation GALLUP		Pool UNDESIGNATED	Dedicated Acreage: Lot 3 23.60 Acres	

1. Outline the acreage dedicated to the subject well by colored pencil or hatchure marks on the plat below.
2. If more than one lease is dedicated to the well, outline each and identify the ownership thereof (both as to working interest and royalty).
3. If more than one lease of different ownership is dedicated to the well, have the interests of all owners been consolidated by communitization, unitization, force-pooling, etc?

☐ Yes ☐ No If answer is "yes," type of consolidation _____

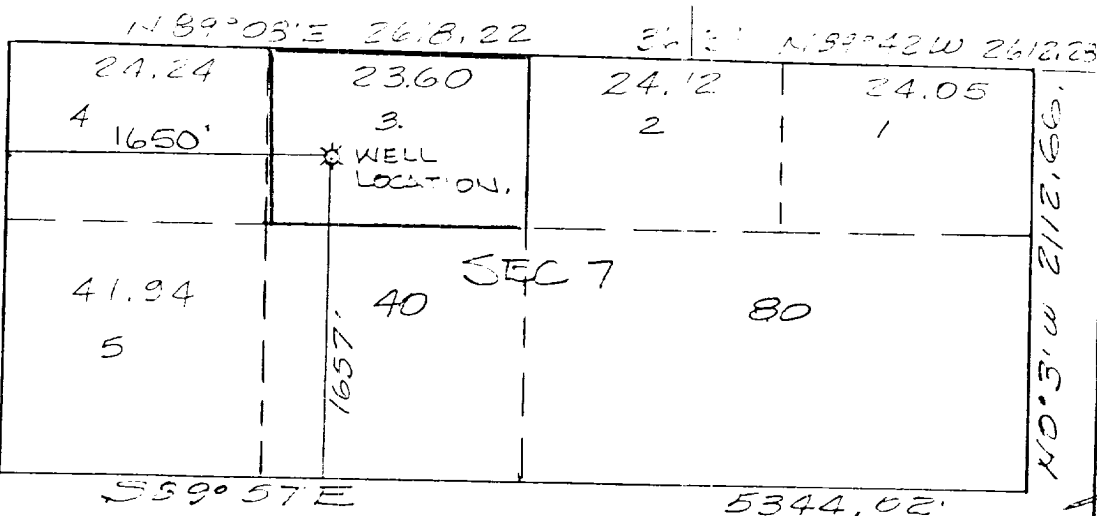
If answer is "no," list the owners and tract descriptions which have actually been consolidated. (Use reverse side of this form if necessary.) _____

No allowable will be assigned to the well until all interests have been consolidated (by communitization, unitization, forced-pooling, or otherwise) or until a non-standard unit, eliminating such interests, has been approved by the Division.

RECEIVED

JUL 7 - 1983

OIL CON. DIV.
DIST. 3



CERTIFICATION

I hereby certify that the information contained herein is true and complete to the best of my knowledge and belief.

Rudy D. Motto
Name

Rudy D. Motto

Position

Area Operations Manager

Company

Union Texas Petroleum Corp.

Date

June 29, 1983

I hereby certify that the well location shown on the plat was plotted from field notes of actual surveys made by me or under my supervision, and that the same is true and correct to the best of my knowledge and belief.

Michael Daly

Date Surveyed

March 8, 1983

Registered Professional Engineer
and/or Land Surveyor

Michael Daly

Certificate No.

5992

Congress Lachman No. 7

1. The geologic name of the surface formation is "Wasatch".

2. The estimated tops of important geologic markers are:

A. Top of the Ojo Alamo	679 ft.
B. Kirtland	879 ft.
C. Fruitland	1684 ft.
D. Pictured Cliffs	1889 ft.
E. Chacra	2862 ft.
F. Cliff House	3514 ft.
G. Point Lookout	4229 ft.
H. Gallup	5434 ft.

3. The estimated depths at which anticipated water, oil or other mineral bearing formations are expected to be encountered are:

A. Top of the Ojo Alamo	679 ft.	Water
B. Kirtland	879 ft.	Water
C. Fruitland	1684 ft.	Water
D. Pictured Cliffs	1889 ft.	Gas
E. Chacra	2862 ft.	Gas
F. Cliff House	3514 ft.	Water
G. Point Lookout	4229 ft.	Gas
H. Gallup	5434 ft.	Oil & Gas

4. The casing program is shown on form 9-331C and all casing is new.

5. The lessee's pressure control equipment schematics are attached, along with minimum specifications, testing procedures, and frequencies.

6. The type, estimated volumes, and characteristics of the circulating medium are as follows:

A. 0 - 300±	ft.	Natural Mud
B. 300± - 5400±	ft.	Permaloid non-dispersed mud containing approx. 450 sx. gel, 60 sx. of permaloid and 15 sx. of CMC.
C. 5400± - 6080±	ft.	Natural Gas

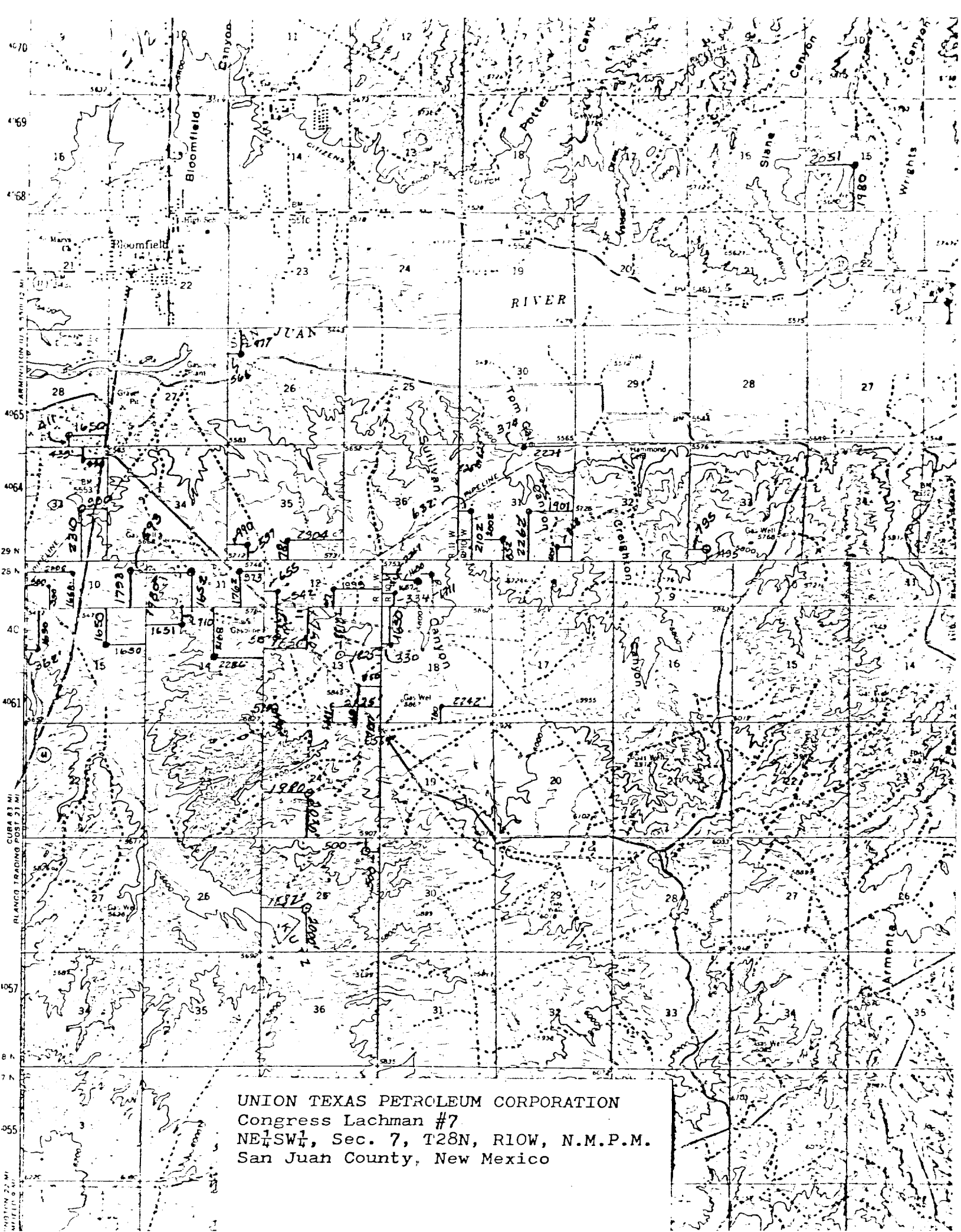
7. The auxiliary equipment to be used will be floats at the bit and a sub on the floor with a full opening valve to be stabbed into the drill pipe when the kelly is not in the string.

8. The well is in an area which is partially developed; therefore, we will not have a testing and coring program. The logging program is as follows:

- A. G.R. - DIFL
- B. GR - CAL
- C. F.D.C.

9. We do not expect to find any abnormal pressures, temperatures or hydrogen sulfide problems in this partially developed area.

10. The anticipated starting date for this well is: June 5, 1983



UNION TEXAS PETROLEUM CORPORATION
Congress Lachman #7
NE $\frac{1}{4}$ SW $\frac{1}{4}$, Sec. 7, T28N, R10W, N.M.P.M.
San Juan County, New Mexico