

UNITED STATES
DEPARTMENT OF THE INTERIOR
GEOLOGICAL SURVEY

APPLICATION FOR PERMIT TO DRILL, DEEPEN, OR PLUG BACK

a. TYPE OF WORK

DRILL ☒DEEPEN ☐PLUG BACK ☐

b. TYPE OF WELL

OIL
WELL ☐GAS
WELL ☒

OTHER

SINGLE
ZONE ☒MULTIPLE
ZONE ☐

2. NAME OF OPERATOR

Pioneer Production Corp.

3. ADDRESS OF OPERATOR

P O Box 208, Farmington, NM 87499

4. LOCATION OF WELL (Report location clearly and in accordance with any State requirements.)

At surface

790' FSL - 2500' FWL

At proposed prod. zone

14. DISTANCE IN MILES AND DIRECTION FROM NEAREST TOWN OR POST OFFICE*

4 miles South of Bloomfield

15. DISTANCE FROM PROPOSED*

LOCATION TO NEAREST
PROPERTY OR LEASE LINE, FT. 790' FSL - Sec. 9
(Also to nearest drlg. unit line, if any)

16. NO. OF ACRES IN LEASE

1731.99

18. DISTANCE FROM PROPOSED LOCATION*
TO NEAREST WELL, DRILLING COMPLETED,
OR APPLIED FOR, ON THIS LEASE, FT.

1500' from

19. PROPOSED DEPTH

3080'

21. ELEVATIONS (Show whether DF, RT, GR, etc.)

5540' GL

23.

DRILLING OPERATIONS AUTHORIZED ARE
SUBJECT TO COMPLIANCE WITH ATTACHED
"GENERAL REQUIREMENTS"

PROPOSED CASING AND CEMENTING PROGRAM

SIZE OF HOLE	SIZE OF CASING	WEIGHT PER FOOT	SETTING DEPTH	QUANTITY OF CEMENT
12-1/4"	8-5/8"	24#	200'	147 cf circulated to surface
7-7/8"	4-1/2"	10.5#	3080'	830 cf circulated to surface

Plan to drill with spud mud, set 200' of 8-5/8" OD, 24# surface casing. Will then drill with a water-mud-gel mixture through the Chacra formation. Plan to run IES and CDL logs, and if deemed productive, will run 4 1/2" OD, 10.5# casing & cement in 1 stage. Will selectively perforate Chacra formation, frac, clean out after frac, and complete well.

GAS IS DEDICATED.

IN ABOVE SPACE DESCRIBE PROPOSED PROGRAM: If proposal is to deepen or plug back, give data on present productive zone and proposed new productive zone. If proposal is to drill or deepen directionally, give pertinent data on subsurface locations and measured and true vertical depths. Give blowout preventer program, if any.

24.

SIGNED

Sherman E. Dugan
Sherman E. Dugan

TITLE

Geologist

(This space for Federal or State office use)

PERMIT NO.

APPROVAL DATE

APPROVED BY

TITLE

CONDITIONS OF APPROVAL, IF ANY:

*2/26/10 for RSL**h7**See Instructions On Reverse Side
NMOCC

30-045-26039

5. LEASE DESIGNATION AND SERIAL NO.

NM 010063

6. IF INDIAN, ALLOTTEE OR TRIBE NAME

7. UNIT AGREEMENT NAME

8. FARM OR LEASE NAME

Redfern 5 Gas Com C

9. WELL NO.

2

10. FIELD AND POOL, OR WILDCAT

Otero Chacra

11. SEC., T., R., M., OR BLK.
AND SURVEY OR AREA

N

Sec. 9, T28N R11W, NMPM

12. COUNTY OR PARISH

13. STATE

San Juan

NM

17. NO. OF ACRES ASSIGNED
TO THIS WELL 172.27
special 130 acres dedicated
tract

20. ROTARY OR CABLE TOOLS

Rotary

22. APPROX. DATE WORK WILL START*

ASAP

This action is subject to administrative
appeal pursuant to 30 CFR 290.RECEIVED
JUL 18 1984
OIL CON. DIV.
DIST. 3

APPROVED
AS AMENDED
JUL 16 1984
DATE
AREA MANAGER
FARMINGTON RESOURCE AREA

WELL LOCATION AND ACREAGE DEDICATION PLAT

Supersedes C-128
Effective 1-1-65

All distances must be from the outer boundaries of the Section

Operator Pioneer Production Corporation		Lease Redfern 5 Gas Com C		Well No. 2
Unit Letter N	Section 9	Township 28 North	Range 11 West	County San Juan
Actual Footage Location of Well:				
790	feet from the	South	line and	2500
			feet from the	West
Ground Level Elev. 5540	Producing Formation Chacra		Pool Otero Chacra	Dedicated Acreage: 132.28 special 130 Acres

1. Outline the acreage dedicated to the subject well by colored pencil or hatchure marks on the plat below.
2. If more than one lease is dedicated to the well, outline each and identify the ownership thereof (both as to working interest and royalty).
3. If more than one lease of different ownership is dedicated to the well, have the interests of all owners been consolidated by communitization, unitization, force-pooling, etc?

☐ Yes ☐ No If answer is "yes," type of consolidation _____

If answer is "no," list the owners and tract descriptions which have actually been consolidated. (Use reverse side of this form if necessary.) _____

No allowable will be assigned to the well until all interests have been consolidated (by communitization, unitization, forced-pooling, or otherwise) or until a non-standard unit, eliminating such interests, has been approved by the Commission.

RECEIVED

JUL 18 1984

OIL CON. DIV.
DIST. 3

RECEIVED

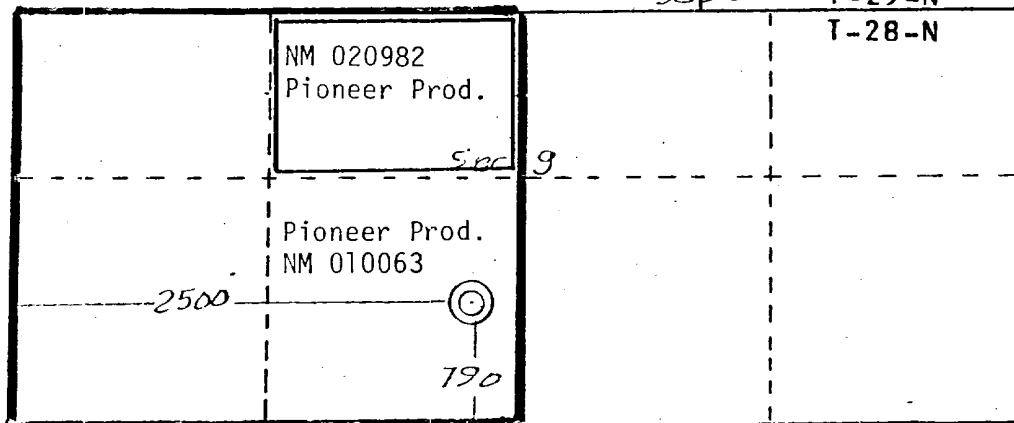
MAY 24 1984

BUREAU OF LAND MANAGEMENT
BIRMINGHAM, ALABAMA

3233

T-29-N

T-28-N



CERTIFICATION

I hereby certify that the information contained herein is true and complete to the best of my knowledge and belief.

Sherman E. Dugan
Name
Sherman E. Dugan

Position
Geologist

Company
Dugan Production Corp.

Date
5-22-84

Edgar L. Risenhoover
I hereby certify that the location shown on this plat was made by me or under my supervision, and that the same is true and correct to the best of my knowledge and belief.

Date Surveyed

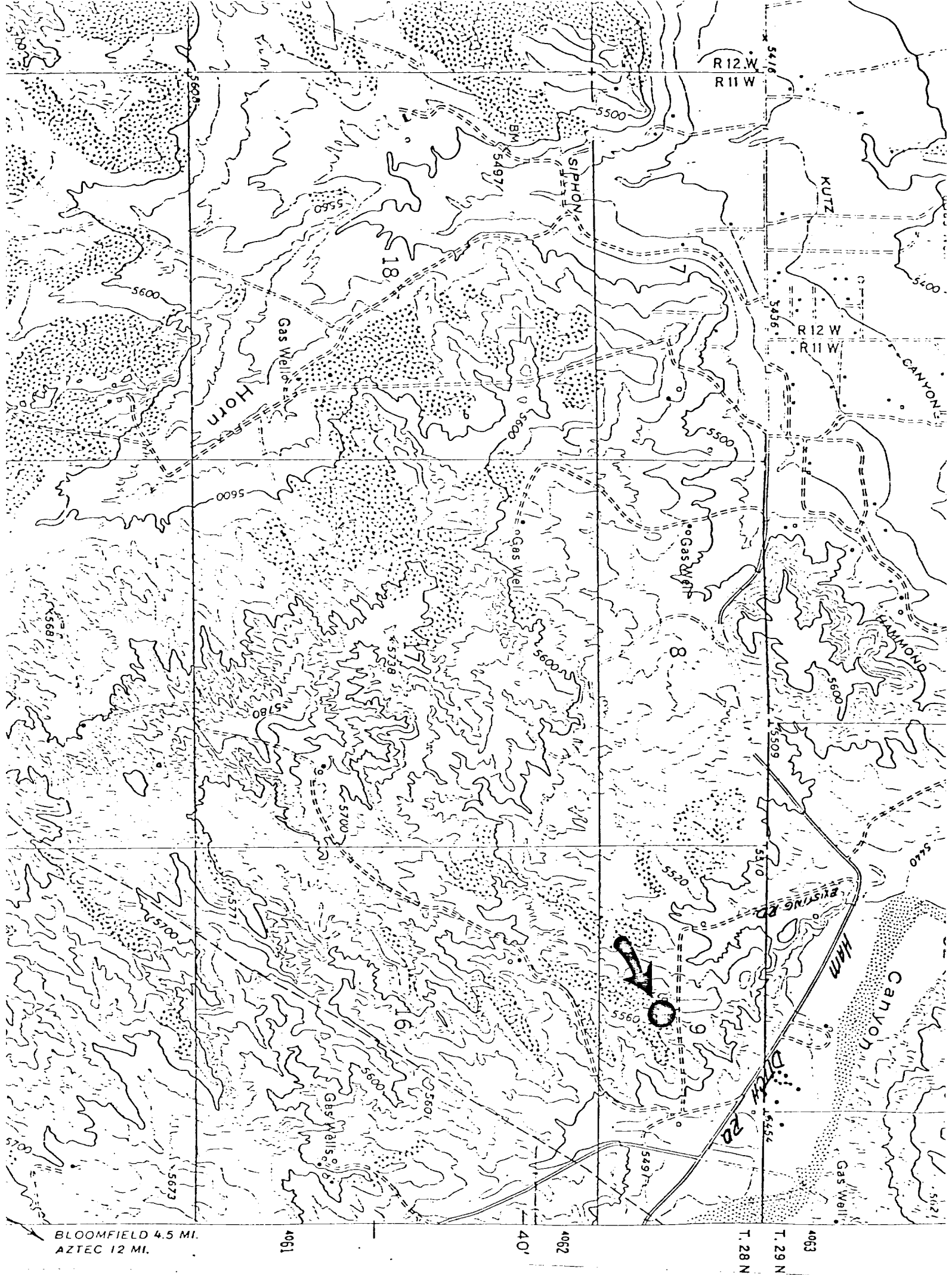
April 19, 1984

Registered Professional Engineer
and/or Land Surveyor

Edgar L. Risenhoover
Certificate No. **5979**

Edgar L. Risenhoover, L.S.

330 660 90 1320 1650 1980 2310 2640 2000 1500 1000 500 0



PIONEER PRODUCTION - Redfern 5 Gas Com C #2
Existing Roads Exhibit E

Distance from nearest town or reference pt.
Village of Bloomfield / 4 miles North

Type of surface Dirt

Conditions Good

Other _____

PIONEER PRODUCTION - Redfern 5 Gas Com #2
Planned Access Road(s) Exhibit E

Width _____ Maximum grades _____

Drainage design _____

Cuts & Fills _____

Surfacing material _____

Turnouts

Culverts

Gates

Cattleguards

Fence cuts

**NO ACCESS ROAD
REQUIRED**