

UNITED STATES
DEPARTMENT OF THE INTERIOR
GEOLOGICAL SURVEY

30-045-26060

APPLICATION FOR PERMIT TO DRILL, DEEPEN, OR PLUG BACK

1a. TYPE OF WORK

DRILL ☒DEEPEN ☐PLUG BACK ☐

b. TYPE OF WELL

OIL
WELL ☐GAS
WELL ☒

OTHER

SINGLE
ZONE ☒MULTIPLE
ZONE ☐

2. NAME OF OPERATOR

Tenneco Oil Company

3. ADDRESS OF OPERATOR

P.O. Box 3249, Englewood, CO 80155

4. LOCATION OF WELL (Report location clearly and in accordance with any State requirements.)*

At surface

530' FNL, 1140' FWL
At proposed prod. zone

14. DISTANCE IN MILES AND DIRECTION FROM NEAREST TOWN OR POST OFFICE*

Approximately 8 mi SE of Blanco, NM

15. DISTANCE FROM PROPOSED*

LOCATION TO NEAREST
PROPERTY OR LEASE LINE, FT.
(Also to nearest drlg. unit line, if any)

530'

18. DISTANCE FROM PROPOSED LOCATION*

TO NEAREST WELL, DRILLING, COMPLETED,
OR APPLIED FOR, ON THIS LEASE, FT.

16. NO. OF ACRES IN LEASE

640

17. NO. OF ACRES ASSIGNED
TO THIS WELL

320

19. PROPOSED DEPTH

+ 6885'

20. ROTARY OR CABLE TOOLS

Rotary

21. ELEVATIONS (Show whether DF, RT, GR, etc.)

6037' GR

22. APPROX. DATE WORK WILL START*

ASAP

This action is subject to administrative
appeal pursuant to 30 CFR 290.

SIZE OF HOLE	SIZE OF CASING	WEIGHT PER FOOT	SETTING DEPTH	QUANTITY OF CEMENT
12-1/4"	9-5/8"	36#	+ 300'	Circulate to surface
8-3/4"	7"	23#	+ 3650'	Circulate to surface - 2 stages
6-1/4"	4-1/2"	10.5#	+ 6885'	Circulate to liner top

See Attached

RECEIVED
AUG 08 1984
OIL CON. DIV.
DIST. 3

IN ABOVE SPACE DESCRIBE PROPOSED PROGRAM: If proposal is to deepen or plug back, give data on present productive zone and proposed new productive zone. If proposal is to drill or deepen directionally, give pertinent data on subsurface locations and measured and true vertical depths. Give blowout preventer program, if any.

24.

SIGNED

TITLE Regulatory Analyst II

(This space for Federal or State office use)

PERMIT NO.

APPROVAL DATE

APPROVED BY

TITLE

CONDITIONS OF APPROVAL, IF ANY:

APPROVED
AS AMENDED
AUG 07 1984
DATE
/s/ J. Stan McKee
ASST.
AREA MANAGER
FARMINGTON RESOURCE AREA

NMOCC

All distances must be from the outer boundaries of the Section.

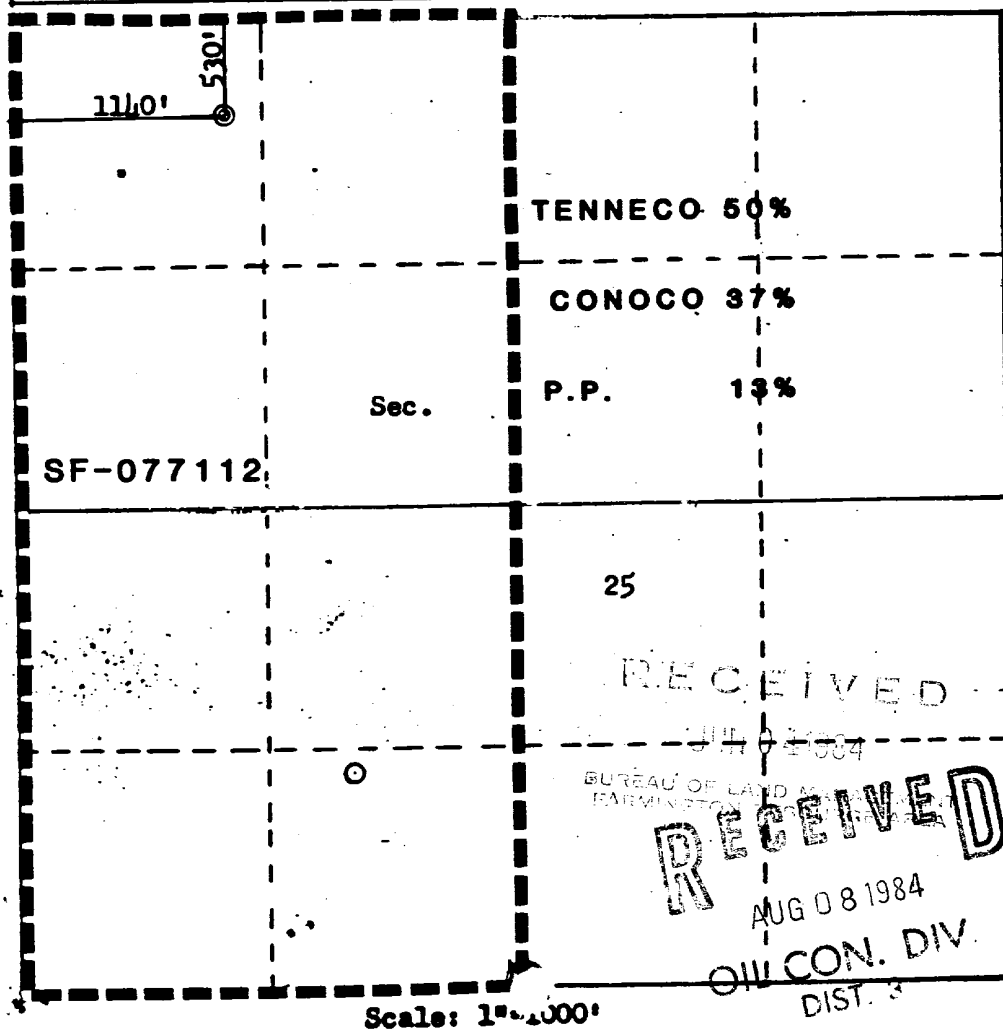
Operator TENNECO OIL COMPANY			Lease WARREN		Well No. 1E
Unit Letter D	Section 25	Township 28N	Range 9W	County San Juan	
Actual Footage Location of Well: 530 feet from the North line and 1140 feet from the West line					
Ground Level Elev. 6037	Producing Formation Dakota		Pool Basin Dakota		Dedicated Acreage 320 Acres

1. Outline the acreage dedicated to the subject well by colored pencil or hatchure marks on the plat below.
2. If more than one lease is dedicated to the well, outline each and identify the ownership thereof (both as to working interest and royalty).
3. If more than one lease of different ownership is dedicated to the well, have the interests of all owners been consolidated by communitization, unitization, force-pooling, etc?

☐ Yes ☐ No If answer is "yes," type of consolidation _____

If answer is "no," list the owners and tract descriptions which have actually been consolidated. (Use reverse side of this form if necessary.) _____

No allowable will be assigned to the well until all interests have been consolidated (by communitization, unitization, forced-pooling, or otherwise) or until a non-standard unit, eliminating such interests, has been approved by the Commission.



CERTIFICATION

I hereby certify that the information contained herein is true and complete to the best of my knowledge and belief.

Name
John Orr
Position
Regulatory Analyst II
Company
Tenneco Oil Company
Date
May 17, 1984

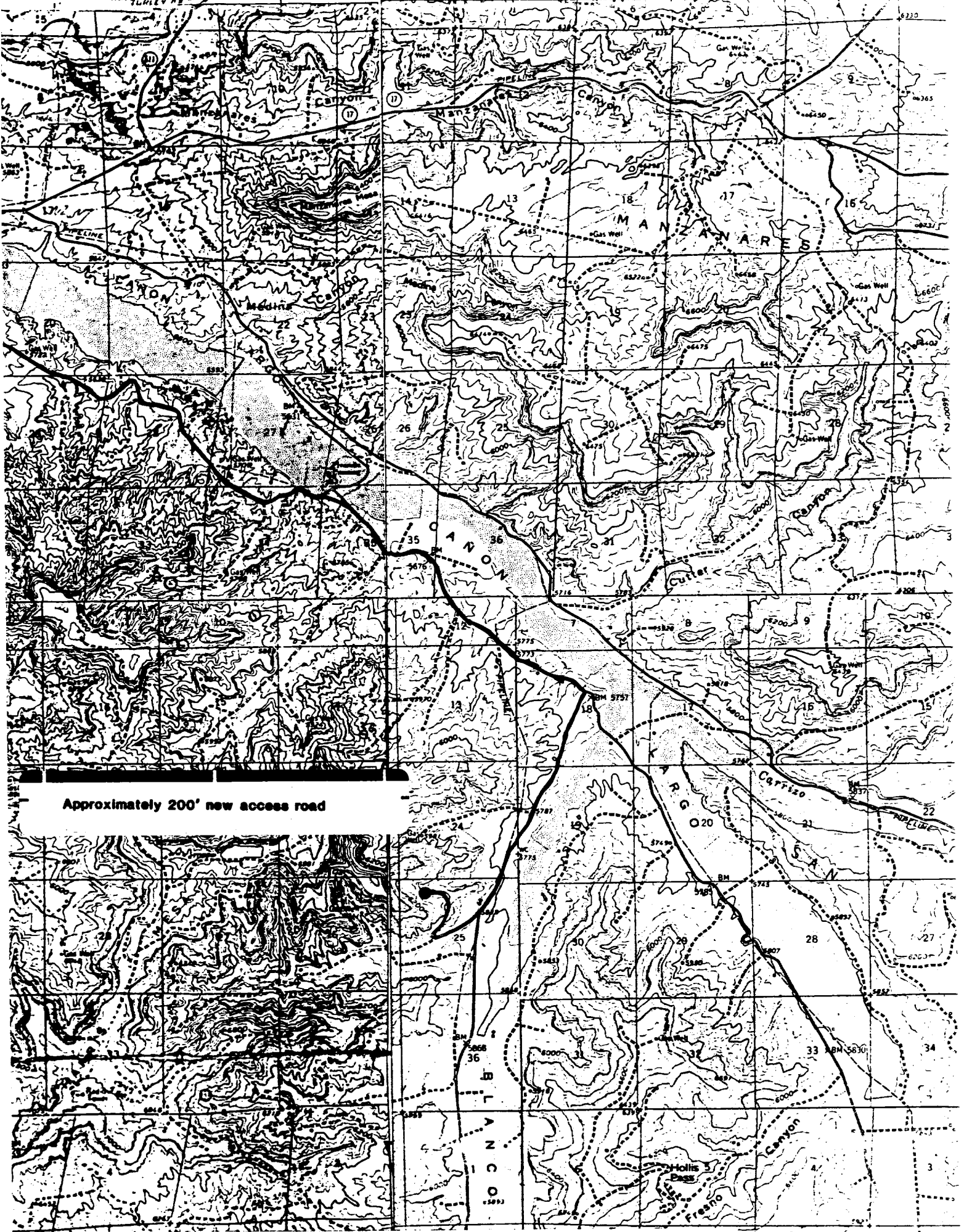
I hereby certify that the well location shown on this plat was plotted from field notes of actual surveys made by me or under my supervision, and that the same is true and correct to the best of my knowledge and belief.

Date Surveyed
APRIL 26, 1984
Registered Professional Engineer and Land Surveyor
Fred B. Kory Jr.
Certificate No. **3950**

BLOOMFIELD QUADRANGLE
NEW MEXICO-SAN JUAN CO.
15 MINUTE SERIES (TOPOGRAPHIC)

UNITED STATES
DEPARTMENT OF THE INTERIOR
GEOLOGICAL SURVEY

NAV 410 DAN 15 MI
520 000 FEET 107°45' 255000m E R 9 W 70 000 FEET (CENTRAL) R 9 N 40'



Approximately 200' new access road

Vicinity Map for
TENNECO OIL COMPANY #1E WARREN
530'FNL 1140'FWL Sec. 25-T28N-R9W
SAN JUAN COUNTY, NEW MEXICO